

HEAT SHRINK END CAP 102L

FOR POWER CABLE END SEALING (INSULATION UP TO 1000 V)

KEY FEATURES

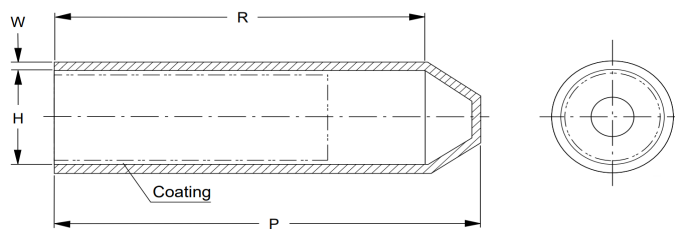
- Reliable environmental sealing
- Excellent electrical performance with high mechanical strength and impact resistance
- UV resistant material, halogen-free content, non-corrosive and non-toxic smoke in event of fire
- Compliant to RoHS and REACH

TE Connectivity (TE)'s Raychem Heat Shrink End Caps are made of crosslinked halogen-free and UV resistant polymer. They are designed to provide environmental sealing of power cable ends and pipes or to insulate energized power cable ends up to 1000 V.

The end caps include an inner layer of hot-melt adhesive, which makes them highly resistant to moisture, fungus and weathering. Fast and easy installation, the end caps shrink and compress the hot-melt adhesive onto the cable jacket, forming a reliable environmental seal.

Customers can count on consistent, high quality products, driven by TE's proven innovation and backed by our extraordinary customer support.

Heat Shrink End Cap 102L



TECHNICAL INFORMATION		
Properties	Standard	Requirements
Tensile Strength	ISO 37	12 MPa min.
Ultimate Elongation	ISO 37	300% min.
Hardness	ISO 868	≥ 45 shore D
Accelerated ageing 7 days at 150°C ± 2°C		
Tensile Strength	ISO 37	12 MPa min.
Ultimate Elongation	ISO 37	300% min.
Low Temperature Flexibility	ASTM D 2671 Procedure C	No cracking at 4 hours at -40°C ± 2°C
Dielectric Strength	IEC 60243 part 1 and 2	≥ 10 kV/mm
Volume Resistivity	TE internal test standard	1x10 ¹⁰ Ω cm min
Water Absorption	ISO 62 method 1	≤ 0.5% max after 24 hours at 23°C ± 2°C
Weathering	The material from which 102L is manufactured contains carbon black (≥ 2.5 %) to protect it from ultra-violet light.	
Operating temperature range	-	-30°C up to + 100°C
Installation/shrinking temp	-	> 120°C
Low temperatures flexibility	-	down to -40°C
Shrink ratio	-	> 2.5 : 1

TECHNICAL INFORMATION					
Description	Diameter		Length		Wall thickness
	H min	H max	P min	R min	w
Standard versions					
102L011-R05/S	12	4	44	40	2.3
102L022-R05/S	21.5	7	60	55	3.2
102L033-R05/S	40	16	100	90	3.0
102L044-R05/S	55	25	140	127	3.4
102L048-R05/S	75	32	165	150	3.2
102L055-R05/S	100	45	145	125	3.6
102L066-R05/S	120	60	160	138	4.0
102L077-R05/S	170	80	250	220	4.0
102L088-R05/S	230	120	250	220	4.0
Short versions					
102L011-R07/S	12	4	25	20	2.3
102L022-R08/S	21.5	7	45	40	2.5
102L033-R09/S	40	15	60	50	3.0
Long versions					
102L011-R15/S	12	4	59	54	2.3
102L033-R15/S	40	15	180	170	3.0
102L044-R15/S	55	25	180	170	3.4
102L048-R15/S	75	32	200	180	3.2
102L055-R15/S	100	45	220	200	4.0

Note: H,P,R = as supplied; h,w = after free recovery.
 The standard and long versions are identified with description, diameter and batch number.
 Short versions with batch number only.

te.com/energy

©2019 TE Connectivity. All Rights Reserved. EPP-2253-7/19

Raychem, TE, TE Connectivity and the TE connectivity (logo) are trademarks of the TE Connectivity Ltd. Family of companies. Other logos, product and Company names mentioned herein may be trademarks of their respective owners. While TE has made every reasonable effort to ensure the accuracy of the information in this brochure, TE does not guarantee that it is error-free, nor does TE make any other representation, warranty or guarantee that the information is accurate, correct, reliable or current. TE reserves the right to make any adjustments to the information contained herein at any time without notice. TE expressly disclaims all implied warranties regarding the information contained herein, including, but not limited to, any implied warranties of merchantability or fitness for a particular purpose. The dimensions in this brochure are for reference purposes only and are subject to change without notice. Specifications are subject to change without notice. Consult TE for the latest dimensions and design specifications

FOR MORE INFORMATION: TE Technical Support Centers

USA:	+ 1 800 327 6996
France:	+ 33 380 583 200
UK:	+ 44 0870 870 7500
Germany:	+ 49 896 089 903
Spain:	+ 34 916 630 400
Italy:	+ 39 333 250 0915
Benelux:	+ 32 16 508 695
Canada:	+ 1 (905) 475-6222
Mexico:	+ 52 (0) 55-1106-0800
Latin/S. America:	+ 54 (0) 11-4733-2200
China:	+ 86 (0) 400-820-6015