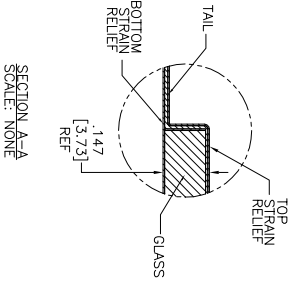


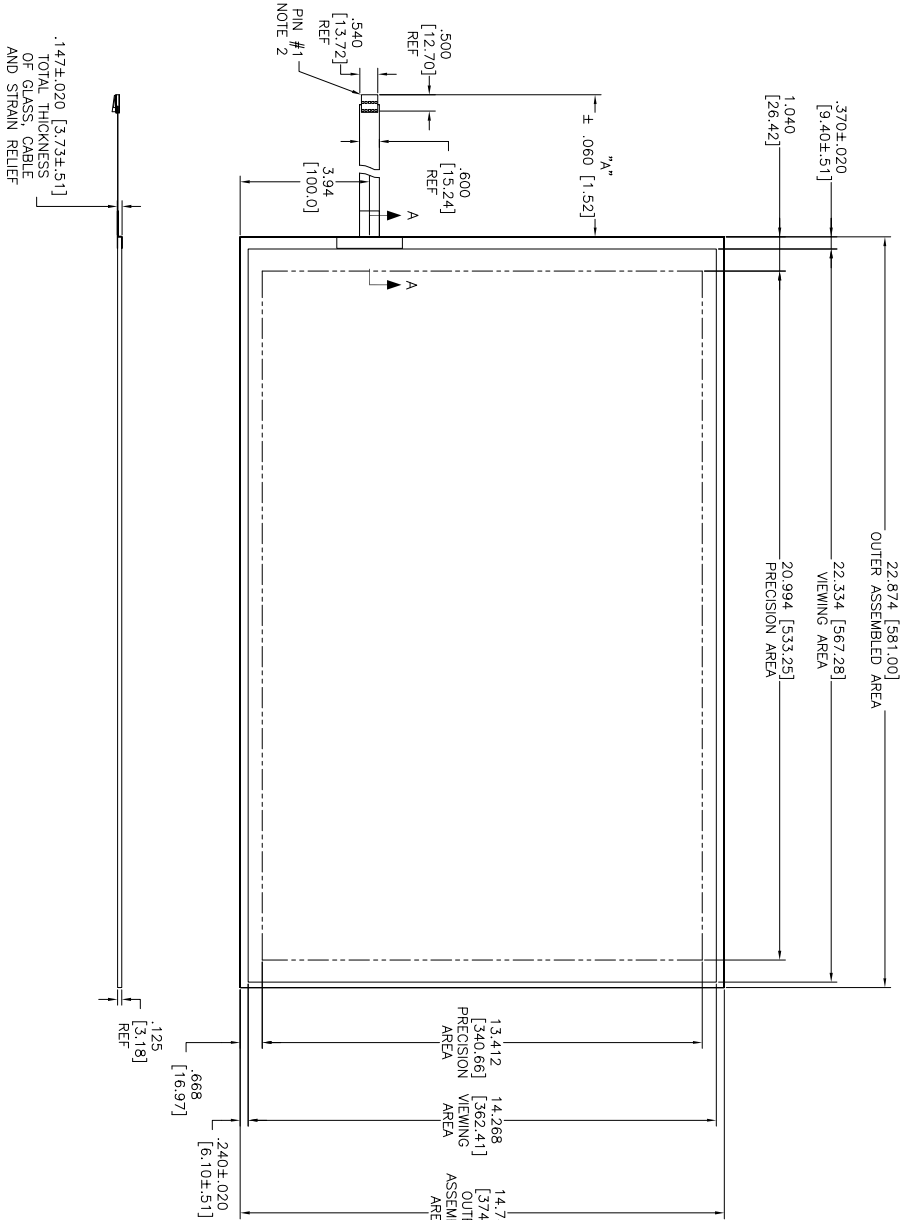
OGA DIAGONAL: 27.22 [691.3]
 VA DIAGONAL: 26.50 [673.2]
 PA DIAGONAL: 24.91 [634.1]



ESD CLAMSHHELL CASE IS USED USB TERMINATIONS.



SECTION A-A
SCALE: NONE



- NOTES:
1. WEIGHT OF GLASS IN GRAMS: 1658±10%
 2. NICOMATIC HOUSING P/N: 0105
 3. NICOMATIC RECEPTACLES (PINS) MATTE TIN PLATED P/N: 14106-12
 4. HOUSING ORIENTED WITH LATCH DOWN

PINOUT	1	LR
	2	LL
	3	SHLD
	4	UL
	5	UR

US NUMBER	TYPE	DIM "A" (TOTAL GLASS TO CONNECTOR)	A/G FINISH	PROD SPEC
98-0003-3714-1	FCC	8.00" [203.20]	AG500	23655

UNITS	INCHES [MM]
TOLERANCES UNLESS OTHERWISE SPECIFIED	
X ± .03 [.76]	
.XXX ± .015 [.38]	
ANGLES ± 1°	
THIRD ANGLE PRACTICE	
DO NOT SCALE DRAWING	
SCALE	1 = 1

© COPYRIGHT 2004 3M TOUCH SYSTEMS USA
 THIS DOCUMENT IS THE PROPERTY OF 3M AND IS TO BE KEPT IN CONFIDENTIALITY WITHOUT ANY WRITTEN PERMISSION OR USED OR REPRODUCED FOR OTHER THAN 3M AUTHORIZED PURPOSES.

TITLE	MARKETING DRAWING
REV	DATE
B	9/11 SB
A	3/11 SB
REV	DATE
1	3/11 SB
2	3/11 SB
3	3/11 SB
4	3/11 SB
5	3/11 SB

MARKETING DRAWING
 SCT32NN 26.50" W

DO (DRAWN)	AUTOCAD	SHEET	1 OF 1	REV	B
SIZE	DOCUMENT NO.				
C	39501-MKT				

UNITS	INCHES [MM]
TOLERANCES UNLESS OTHERWISE SPECIFIED	
X ± .03 [.76]	
.XXX ± .015 [.38]	
ANGLES ± 1°	
THIRD ANGLE PRACTICE	
DO NOT SCALE DRAWING	
SCALE	1 = 1