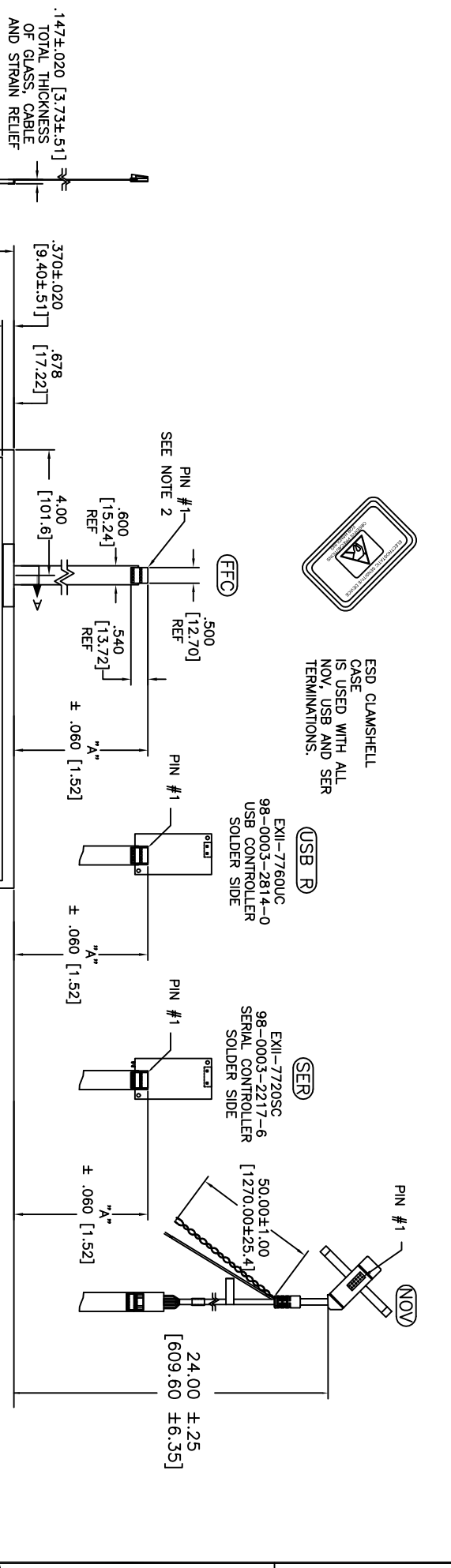


OGA DIAGONAL: 18.05 [458.50]
 VA DIAGONAL: 17.34 [440.38]
 PA DIAGONAL: 16.35 [415.30]

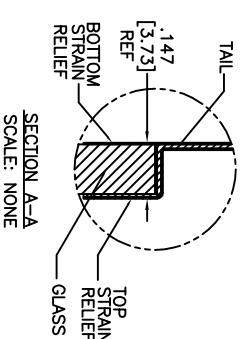
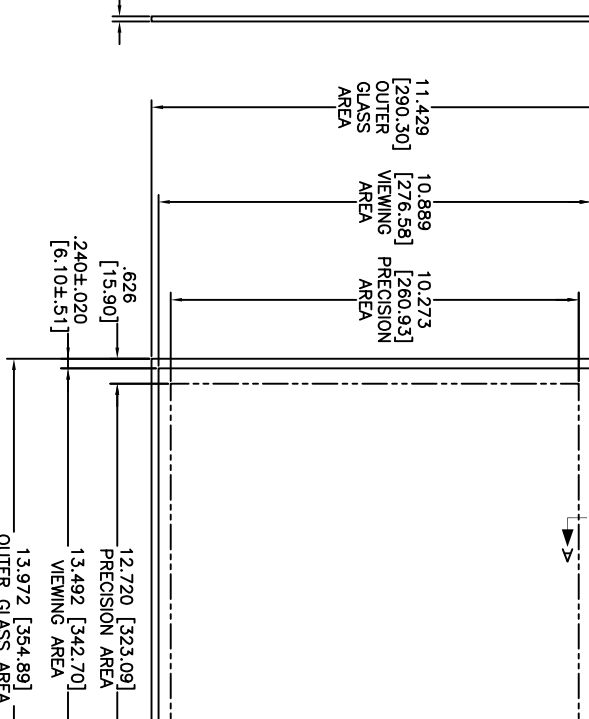


ESD CLAMSHELL CASE IS USED WITH ALL NOV, USB AND SER TERMINATIONS.

TOP LEVEL NUMBER	US NUMBER	TYPE	DM "A" (TOTAL GLASS TO CONNECTOR)	A/G FINISH	PROD SPEC
17-8901-205	98-0003-2665-6	FFC	8.00" [203.20]	AG500	23655
17-8901-227	98-0003-2203-6	SER	8.00" [203.20]	AG500	23655
17-8901-206	98-0003-2666-4	NOV	SEE DWG	AG500	23655
17-8901-226	98-0003-3025-2	USB R	8.00" [203.20]	AG500	23655



PINOUT	UL	LR
1	LL	UL
2	UL	LR
3	SHLD	LR
4	UL	LR
5	LR	LR



UNITS	INCHES [MM]
DECIMAL DIMENSIONS	±.03 [.76]
ANGLES	±.015 [.38]



MARKETING DRAWING
 SCT32N 17.34"

REV	DESCRIPTION	DATE	BY
H	REVISE PER CO 036296	4/13	SB
G	REVISE PER CO 033533	11/11	SB
F	REVISE PER CO 033064	6/11	SB

- NOTES:
1. WEIGHT OF GLASS IN GRAMS: 785 ±10%
 2. NICO MATIC HOUSING P/N: OLOS
 3. NICO MATIC RECEPTACLES (PINS) MATTE TIN PLATED P/N: 14106-12
 4. HOUSING ORIENTED WITH LATCH DOWN

DATE	12/05	DRAWN	A. OUELLETTE
DO NOT SCALE DRAWING	SCALE	1 = 1	
REV	C	DOCUMENT NO.	29615-MKT
SHEET	1	OF	1