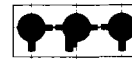


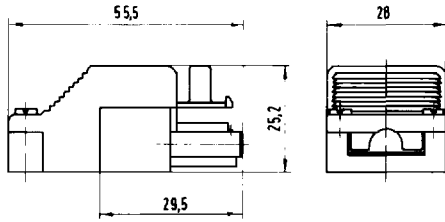
# ST 18/3poles Male parts

black/white      green

coding

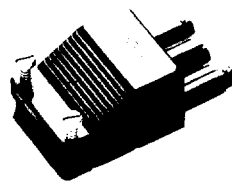
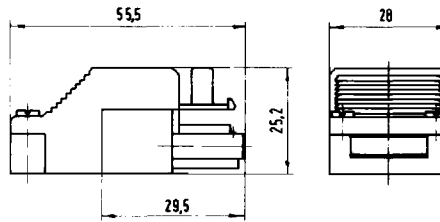


double screw connector  
strain relief for one round cable  
diameter 6.5–8.3 mm



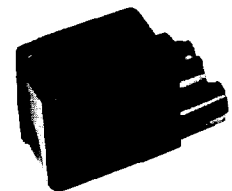
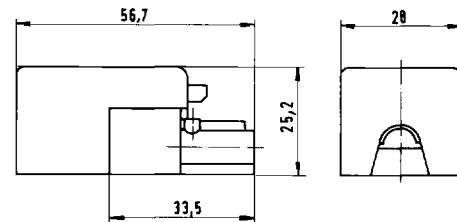
**male part** assembled  
with strain relief without locking device  
black      **93.732.6353.0**      100  
white      **93.732.6350.0**      100

double screw connector  
strain relief for two round cables  
diameter 4.5–10.0 mm  
or one flat cable



**male part** assembled  
with strain relief without locking device  
black      **93.632.6353.0**      100  
white      **93.632.6350.0**      100

double screw connector  
strain relief for one round cable  
diameter 6.5–8.3 mm



**female part** assembled  
with strain relief without locking device  
black      **93.733.3353.0**      100  
white      **93.733.3350.0**      100

**male part** assembled  
with strain relief with locking device  
black      **93.732.7353.0**      100  
white      **93.732.7350.0**      100

**male part** assembled  
with strain relief with locking device  
black      **93.632.7353.0**      100  
white      **93.632.7350.0**      100

**female part** assembled  
with strain relief with locking device  
black      **93.733.4353.0**      100  
white      **93.733.4350.0**      100

**male part** unassembled  
with strain relief without locking device  
black      **93.932.6353.0**      200  
white      **93.932.6350.0**      200

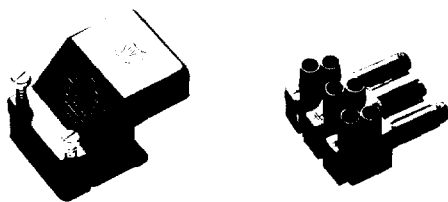
**male part** unassembled  
with strain relief without locking device  
black      **93.832.6353.0**      200  
white      **93.832.6350.0**      200

**female part** unassembled  
with strain relief without locking device  
black      **93.933.3353.0**      200  
white      **93.933.3350.0**      200

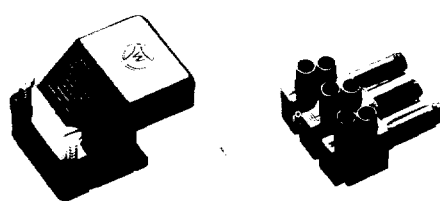
**male part** unassembled  
with strain relief with locking device  
black      **93.932.7353.0**      200  
white      **93.932.7350.0**      200

**male part** unassembled  
with strain relief with locking device  
black      **93.832.7353.0**      200  
white      **93.832.7350.0**      200

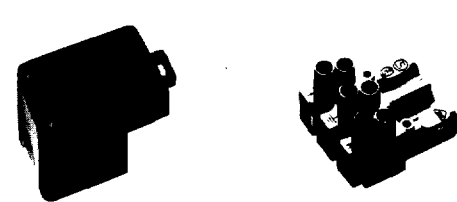
**female part** unassembled  
with strain relief with locking device  
black      **93.933.4353.0**      200  
white      **93.933.4350.0**      200



**male part**  
black      **93.032.6353.0**      200  
white      **93.032.6350.0**      200



**male part**  
black      **93.032.6353.0**      200  
white      **93.032.6350.0**      200



**female part**  
black      **93.031.3353.0**      200  
white      **93.031.3350.0**      200

**strain relief** complete with top and bottom part  
without locking device  
black      **Z7.410.8253.0**      200  
white      **Z7.410.8250.0**      200

**strain relief** complete with top and bottom part  
without locking device  
black      **Z7.410.5253.0**      200  
white      **Z7.410.5250.0**      200

**strain relief** complete with top and bottom part  
without locking device  
black      **Z7.419.2453.0**      200  
white      **Z7.419.2453.2**      200

**strain relief** complete with top and bottom part  
with locking device  
black      **Z7.410.3453.0**      200  
white      **Z7.410.3450.0**      200

**strain relief** complete with top and bottom part  
with locking device  
black      **Z7.410.3353.0**      200  
white      **Z7.410.3350.0**      200

**strain relief** complete with top and bottom part  
with locking device  
black      **Z7.419.2253.0**      200  
white      **Z7.419.2253.2**      200