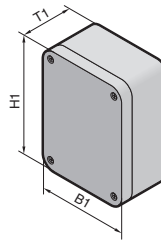
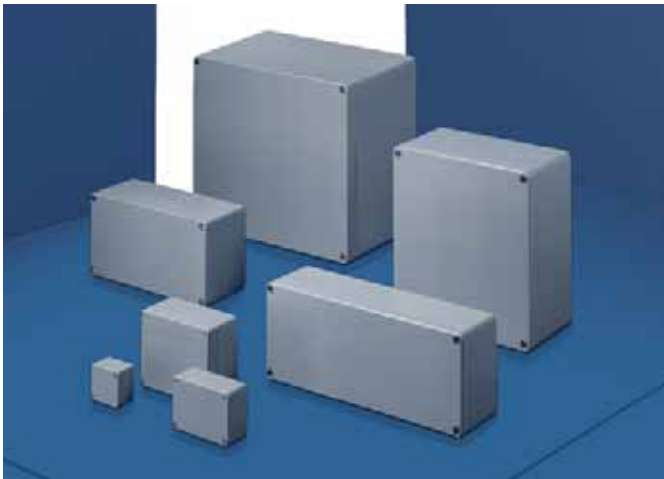


# Cast aluminium enclosures GA

1.1 Cast aluminium enclosures GA



**Material:**  
Enclosure and lid made from cast aluminium, lid with neoprene cord seal.

**Surface finish:**  
Textured enamel similar to RAL 7001

**Protection category:**  
IP 66 to EN 60 529/09.2000, complies with NEMA 4.

**Supply includes:**  
2 or 4 cover screws, captive mounted,  
2 or 4 screws for the attachment of support rails, mounting plates etc.,  
1 screw for connection of the PE conductor.



**Rittal service:**

Individual standard solutions for enclosures and covers

- Hole drilling
- Thread tapping
- Milling
- Screen printing
- Engraving
- Choice of RAL colours and other surface finishes available on request.

**Detailed drawing,**  
see page 1174.

<b>Width (B1) mm</b>	50	58	98	150	75	125	175	250	122	Page
<b>Height (H1) mm</b>	45	64	64	64	80	80	80	80	120	
<b>Depth (T1) mm</b>	30	36	36	36	57	57	57	57	80	
<b>Model No. GA</b>	<b>9100.210</b>	<b>9101.210</b>	<b>9102.210</b>	<b>9103.210</b>	<b>9104.210</b>	<b>9105.210</b>	<b>9106.210</b>	<b>9107.210</b>	<b>9108.210</b>	
Packs of	6	5	3	2	1	1	1	1	1	

<b>Accessories</b>										
Mounting plate	-	-	-	-	-	9105.700	-	-	9108.700	115
Packs of	-	-	-	-	-	10	-	-	2	
Support rail <sup>1)</sup>	TS 15/5.5 (Packs of 10)	-	-	-	-	9105.150	-	-	-	115
	TS 35/7.5 (Packs of 5)	-	-	-	-	-	-	-	9108.350	115
Wall mounting brackets (Packs of 2)	-	-	-	-	-	-	-	-	9121.122	115
Exterior hinge (Packs of 2)	-	-	-	-	-	-	-	-	9123.000	115

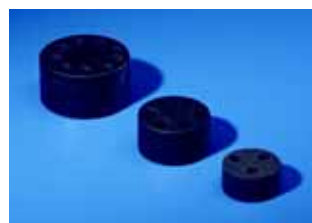
<b>Width (B1) mm</b>	220	360	160	260	360	200	280	330	330	Page
<b>Height (H1) mm</b>	120	122	160	160	160	230	230	230	230	
<b>Depth (T1) mm</b>	90	80	90	90	90	110	110	110	180	
<b>Model No. GA</b>	<b>9110.210</b>	<b>9111.210</b>	<b>9112.210</b>	<b>9113.210</b>	<b>9114.210</b>	<b>9116.210</b>	<b>9117.210</b>	<b>9118.210</b>	<b>9119.210</b>	
Packs of	1	1	1	1	1	1	1	1	1	

<b>Accessories</b>										
Mounting plate	9110.700	-	9112.700	9113.700	9114.700	9116.700	9117.700	9118.700	9118.700	115
Packs of	2	-	2	2	1	1	1	1	1	
Support rail <sup>1)</sup>	TS 35/7.5 (Packs of 5)	9110.350	-	9112.350	-	-	-	-	-	115
	Wall mounting brackets (Packs of 2)	9121.122	9121.122	9121.160	9121.160	9121.160	9121.230	9121.230	9121.230	115
Exterior hinge (Packs of 2)	9123.000	9123.000	9123.000	9123.000	9123.000	9123.000	9123.000	9123.000	9123.000	115

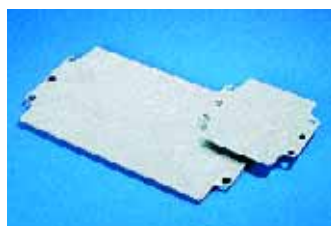
<sup>1)</sup> Installation in the width



**Cable gland, brass,**  
Model No. see page 1054.



**Multi-seal inserts,**  
Model No. see page 1055.



### Mounting plate

for universal interior installation.

**Material:**

Sheet steel, zinc-plated, passivated, with attachment holes.

Exterior dimensions mm		For enclosure	Packs of	Model No. GA
Width	Height			
114	69	GA 9105.210	10	<b>9105.700</b>
109	107	GA 9108.210	2	<b>9108.700</b>
207	107	GA 9110.210	2	<b>9110.700</b>
144	142	GA 9112.210	2	<b>9112.700</b>
245	142	GA 9113.210	2	<b>9113.700</b>
346	142	GA 9114.210	1	<b>9114.700</b>
183	214	GA 9116.210	1	<b>9116.700</b>
264	214	GA 9117.210	1	<b>9117.700</b>
314	214	GA 9118.210/GA 9119.210	1	<b>9118.700</b>



### Support rail

To accommodate terminal blocks or other installed equipment.

**Material:**

Sheet steel, zinc-plated, passivated.

Rail	Rail length available for population mm	For enclosure width mm	Packs of	Model No. GA
TS 15/5.5 to EN 50 045	95	125	10	<b>9105.150</b>
TS 35/7.5 to EN 50 022	80	122	5	<b>9108.350</b>
	115	160	5	<b>9112.350</b>
	180	220	5	<b>9110.350</b>



### Wall mounting bracket

For external mounting to surfaces – no need to dismantle the lid if pre-assembled.

**Material:**

Sheet steel, zinc-plated, passivated

For enclosure	Packs of	Model No. GA
GA 9108.210/ GA 9110.210/ GA 9111.210	2	<b>9121.122</b>
GA 9112.210/ GA 9113.210/ GA 9114.210	2	<b>9121.160</b>
GA 9116.210/ GA 9117.210/ GA 9118.210/ GA 9119.210	2	<b>9121.230</b>

### Hinge, exterior

For fastening the lid to the enclosure base.

**Material:**

Die-cast aluminium

**Colour:**

RAL 7001

For enclosure	Packs of	Model No. GA
GA 9108.210/ GA 9110.210/ GA 9111.210/ GA 9112.210/ GA 9113.210/ GA 9114.210/ GA 9116.210/ GA 9117.210/ GA 9118.210/ GA 9119.210	2 + 8 screws	<b>9123.000</b>

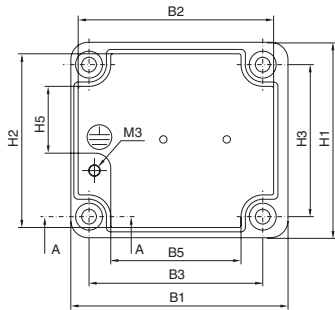
# Industrial Enclosures

## Small enclosures

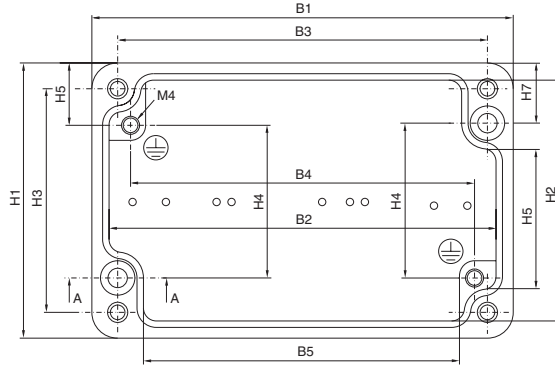
### 1.1 Cast aluminium enclosures GA

Page 114

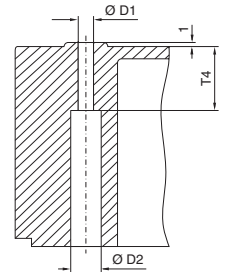
Version A



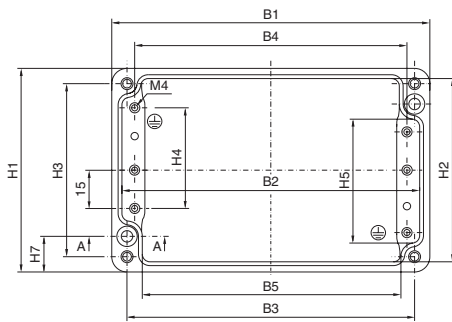
Version B



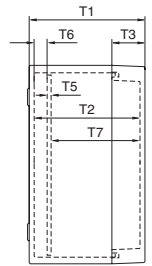
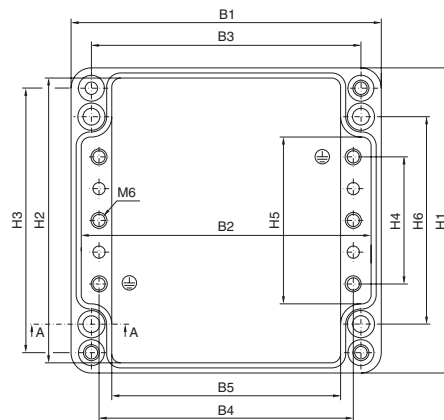
Section A – A



Version C



Version D



**Note:**

For installations manufactured by the customer, the width and height dimensions of the mounting plate (see page 113) must not be exceeded. For enclosures where no mounting plate is available, the following dimensions shall apply analogously:

Model No. GA	Width mm	Height mm
9100.210	43	38
9101.210	48	54
9102.210	88	54
9103.210	140	54
9104.210	64	69

Model No. GA	Design	Width dimensions mm					Height dimensions mm							Depth dimensions mm							Diameter mm	
		B1	B2	B3	B4	B5	H1	H2	H3	H4	H5	H6	H7	T1	T2	T3	T4	T5	T6	T7	D1	D2
9100.210	A	50	45	40	-	30	45	40	35	-	18	-	-	30	25	6	5	-	-	-	4.3	7
9101.210	B	58	50	46	40	34	64	56	52	33	32	-	14	34	29	9	8	-	-	-	4.5	8
9102.210	B	98	90	86	81	74	64	57	52	33	32	-	14	35	29	10	8	-	-	-	4.5	8
9103.210	B	150	142	138	132	126	64	56	52	33	32	-	14	35	28	10	9	-	-	-	4.5	7.8
9104.210	C	75	66	63	56	52	80	71	68	39	48	-	14	57	50	15	9.5	-	-	-	4.5	8
9105.210	C	125	116	113	106	99	80	71	68	39	48	-	14	57	50	15	10	1.5	6	42.5	4.5	8
9106.210	C	175	166	163	156	152	80	71	68	39	48	-	14	57	50	15	8	1.5	6	42.5	4.5	7
9107.210	C	250	241	238	231	226	80	71	68	39	48	-	14	57	50	15	9.5	1.5	6	42.5	4.5	7.5
9108.210	D	122	112	106	95	90	120	111	104	52	64	82	-	80	72	20	15.5	1.5	8	62.5	6.5	10.5
9110.210	D	220	211	204	195	183	120	111	104	50	64	82	-	91	82	30	15	1.5	9	71.5	6.7	11
9111.210	D	360	349	344	333	322	120	111	104	48	62	82	-	82	72	20	9	2	8.5	61.5	6.5	10.8
9112.210	D	160	151	140	130	120	160	151	140	76	89	110	-	91	82	20	20	2	8.5	71.5	7	12
9113.210	D	260	251	240	230	220	160	151	140	76	90	110	-	91	82	20	19	1.5	8.5	72	7	13
9114.210	D	360	350	340	330	316	160	151	140	76	89	110	-	91	82	20	19	2	9	71	7	13.5
9116.210	D	202	190	180	170	159	232	221	210	144	159	180	-	111	102	20	21	2	9	91	6	13
9117.210	D	280	271	260	250	239	232	221	210	144	159	180	-	111	102	20	21	2	9	91	6	13
9118.210	D	334	321	310	300	289	233	223	210	144	160	180	-	111	102	20	25	2	9	91	6.4	13.5
9119.210	D	330	321	310	300	290	230	221	210	144	160	180	-	181	170	20	9	2	9	159	7.5	11