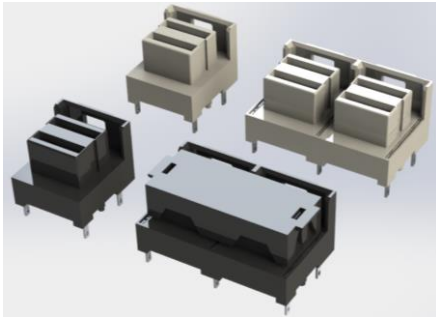




900/901 SERIES

Internal Mini SAS Vertical SMT Connector
0.75 mm Pitch

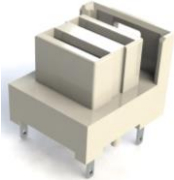
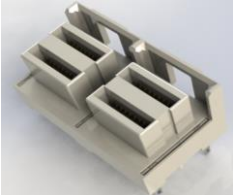
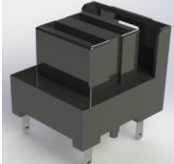



Features:

- Power Sum :
PSNEXT 12Gbps@<-30dB
PSFEXT 12Gbps@<-30dB
- Available in 1x1 port, 1x2 port
- Height : 12.41 mm
- Compliance with SAS 3.0
- Application : Server, Data Storage, Switch

Specifications:

Housing Material	High Temperature Thermoplastic UL-94V-0
Contact Material	Copper Alloy
Soldering Post	Copper Alloy
Contact Plating	30 μ " Gold Plating
Voltage Rating	30V AC Max.
Current Rating	0.5 A/ Pin Max.
Contact Resistance	Initial: 35m Ω Max. After Test: Δ R 10m Ω
Dielectric Withstand Voltage	80 V AC for 60s
Insulation Resistance	1000 M Ω Min.
Operating Temperature	-40°C to +80°C
Mating Force	50N Max.
Unmating Force	10N Max.

Part Number	No. of Contacts	Photo	Impedance
900-036-629-002	1 Port, 36 Contacts		85 Ω
900-072-629-002	2 Port, 72 Contacts		85 Ω
901-036-629-002	1 Port, 36 Contacts		100 Ω
901-072-629-002	2 Port, 72 Contacts		100 Ω