

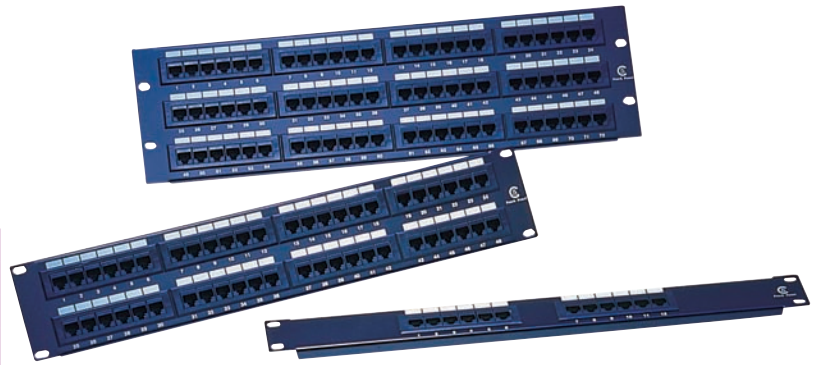
# LAN/DATACOMM



[www.eclipsetools.com](http://www.eclipsetools.com)

## CAT 5e Patch Panels

- Can be used with 110 and Krone punch down tools
- Meets T568A & T568B standards
- Standard 19 inch Rack Mount

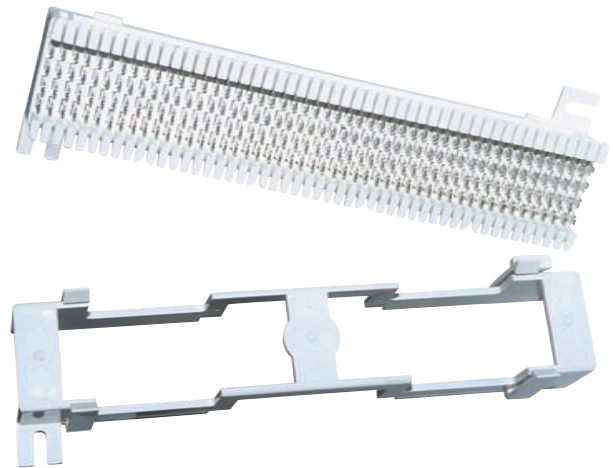


Description	Part No.
CAT 5e Patch Panels (12 Ports)	901-001
CAT 5e Patch Panels (24 Ports)	901-002
CAT 5e Patch Panels (48 Ports)	901-003
CAT 5e Patch Panels (72 Ports)	901-004
CAT 5e Patch Panels (96 Ports)	901-005

## 66 Termination Block Mounting Bracket

- 50 Pair
- Marking surfaces for identification
- Plastic cover
- CAT 5e

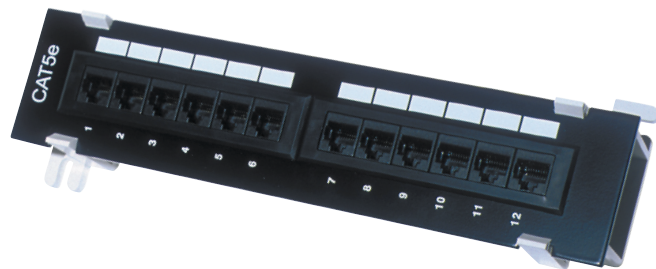
Description	Part No.
Type 66 Termination Block (66 Block)	901-007
Mounting Bracket for Type 66 Block	901-008
Bridging Clips	902-198
Clear Replacement Cover	902-199



## 12 Port Mini-Vertical Patch Panel

- CAT 5e
- Supplied w/mtg bracket
- Great for home use

Description	Part No.
12 Port Mini-Vertical Patch Panel	901-006



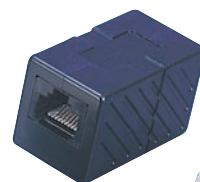
## CAT.5e Inline Coupler

Our CAT 5e inline coupler is ideal to use if you are trying to link to an existing network cable or to simply extend your patch cables. Capable of handling LAN speeds of up to 100 Mbps. The coupler meets TIA/EIA 568A, Category 5e specifications.

**Specification**  
 Housing :ABS UL 94V-0, black or white color  
 Jack: RJ45, 50u" gold  
 Shielded: Phosphor bronze with tin plated  
 Dimension: L1.70" x W 0.92" x H 1.00"

- 902-052 Unshielded in-line coupler, white color
- 902-051 Unshielded in-line coupler, black color

Description	Color	Part No.
CAT.5e Inline Coupler	black	902-051
	white	902-052



902-051



902-052

## Keystone Jack Tool-less Version

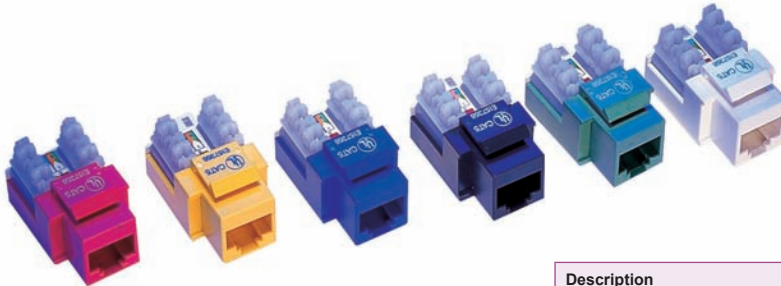


- Fits standard CAT 5e patch panels and wall plates
- Requires no tool for making connections

Available in the following colors:

Description	Color	Part No.
Keystone Jack	Green	901-009
Keystone Jack	Ivory	901-010
Keystone Jack	Red	901-011
Keystone Jack	Yellow	901-012
Keystone Jack	White	901-036
Keystone Jack	Blue	902-048

## 110 Punchdown Style Keystone Jacks



Description	Color	Part No.
110 Punchdown Style Keystone Jacks	Black	901-027
110 Punchdown Style Keystone Jacks	Ivory	901-028
110 Punchdown Style Keystone Jacks	White	901-029
110 Punchdown Style Keystone Jacks	Red	901-030
110 Punchdown Style Keystone Jacks	Blue	901-031
110 Punchdown Style Keystone Jacks	Yellow	901-032
110 Punchdown Style Keystone Jacks	Green	901-033
110 Punchdown Style Keystone Jacks	Gray	901-034
RJ11/12 Telecom Jacks	White	901-037

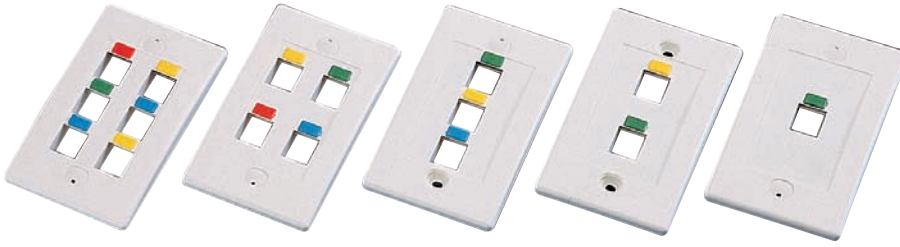
## 110 Punchdown Safety Chassis for Keystone Jacks



- Holds jack while performing punching operation
- Prevents injury to the hands
- Holds 901-027 thru 901-034 jacks

Description	Part No.
110 Punchdown Safety Chassis for Keystone Jacks	901-035

## Wall Plate for Keystone Jacks



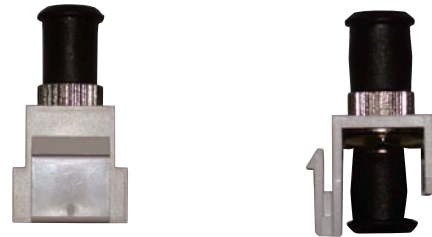
- 4.5" x 2.75" plates
- One, two, three, four or six port configurations
- UL 94V-O ABS

Description	Color	Part No.
One port configuration	Ivory	901-017
Two port configuration	Ivory	901-018
Three port configuration	Ivory	901-019
Four port configuration	Ivory	901-020
Six port configuration	Ivory	901-021
One port configuration	White	901-022
Two port configuration	White	901-023
Three port configuration	White	901-024
Four port configuration	White	901-025
Six port configuration	White	901-026

## Wall Plate Modules



901-013



901-016



901-014



901-015

- Blank, F-Type, ST Fiber, BNC
- Works with all standard wall plates

Description	Color	Part No.
Wall Plate Modules (Blank)	Ivory	901-013
Wall Plate Modules (BNC Feedthrough)	Ivory	901-014
Wall Plate Modules (F-Type Feedthrough)	Ivory	901-015
Wall Plate Modules (ST Fiber)	Ivory	901-016
Blank Module Insert	White	902-064
BNC Feed Thru Insert	White	902-065
F-Type Feed Thru Insert	White	902-066
ST Feed Thru Module Insert	White	902-067