

MICRO SWITCH
a Honeywell Division

FED. MFG. CODE 91 929

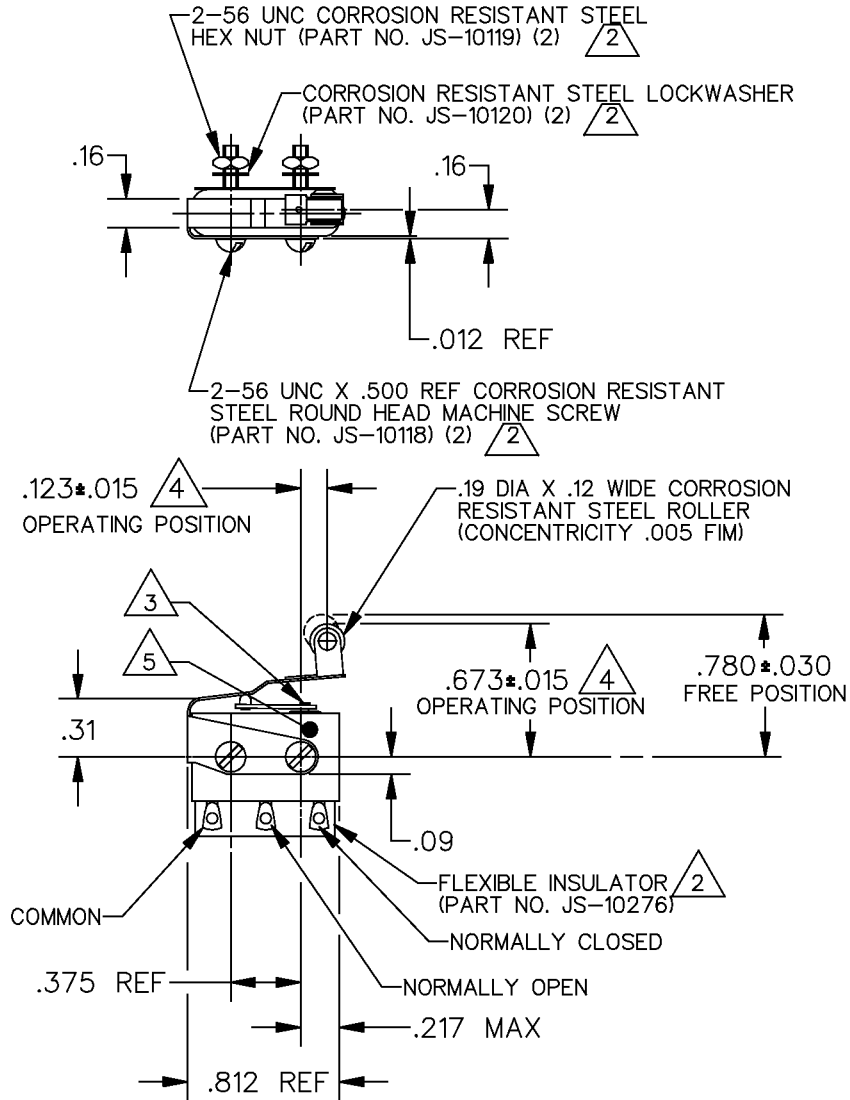
ACTUATOR-SWITCH

CATALOG LISTING

8AS239

CATALOG LISTING
8AS239
 PAGE 1 OF 1
 ISSUE **M**
8

RELEASE NO. PR-15555-T REPLACES

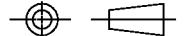


NOTES

- 1 - UNIT INCLUDES CATALOG LISTING 1HM19 BASIC SWITCH AND JS-176 TYPE ACTUATOR,
- $\triangle 2$ FURNISHED ASSEMBLED
- $\triangle 3$ ADJUSTMENT CAUTION: DO NOT ALLOW ACTUATOR LEAF TO COME IN CONTACT WITH FIXED END OF HM LEVER, SEAL DAMAGE MAY OCCUR
- $\triangle 4$ LEAF ACTUATOR ADJUSTED TO MEET SPECIFIED OPERATING POSITION PRIOR TO DELIVERY DISASSEMBLY, AND SUBSEQUENT REASSEMBLY MAY ALTER THIS CONDITION
- $\triangle 5$ SERIAL NUMBER TO BE VISIBLE THIS AREA PER HAMILTON STD. DRG. 786126

THIS DRAWING COVERS A PROPRIETARY ITEM AND IS THE PROPERTY OF MICRO SWITCH, A DIVISION OF HONEYWELL. THIS DRAWING IS NOT TO BE COPIED OR USED WITHOUT THE APPROVAL OF MICRO SWITCH.

THIRD ANGLE PROJECTION



| CHARACTERISTICS | ELECTRICAL DATA | | | SCALE | FULL | DO NOT SCALE PRINT |
|----------------------------------|--------------------------------|--------|------------------|---|--------|--------------------|
| | CONTACT ARRANGEMENT S P D T | | | UNLESS OTHERWISE SPECIFIED TOLERANCES ARE | | |
| OPERATING FORCE — — — — 9 OZ MAX | SEA LEVEL | | | ONE PLACE | (.0) | \pm .030 |
| RELEASE FORCE — — — — 2 OZ MIN | LOAD | 28 VDC | 115 VAC, 400 CPS | TWO PLACE | (.00) | \pm .015 |
| DIFFERENTIAL TRAVEL — — .030 MAX | RESISTIVE | 4 AMP | 2 AMP | THREE PLACE | (.000) | \pm .005 |
| | INDUCTIVE | 2 AMP | 2 AMP | ANGLES | | \pm |
| OVERTRAVEL — — — — .030 MIN | LAMP | 1 AMP | .5 AMP | WEIGHT | | |

REVISIONS
 A PR-15555-T KEW 27 APR 87
 B CO-62079 GRT 16 JUL 87
 C CO-63383 TSK 26 APR 88
 D CO-67323A SAV 26 SEP 90
 E CO-70455 SAV 11 JUN 91
 F CO82984 DLT 17 MAY 96
 CHECK G L H
 CHECK G L H
 CHECK G L H
 DRAWN K E W
 DDM/CAD