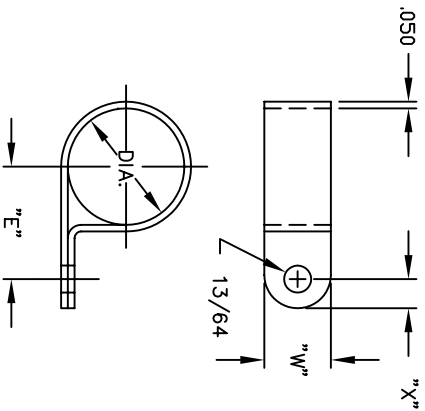


| REVISIONS |             | REVISED BY | DATE | APPR |
|-----------|-------------|------------|------|------|
| SYM       | DESCRIPTION |            |      |      |

| PART NO. | DIA.  | "E"  | "W" | "X"  |
|----------|-------|------|-----|------|
| 8940     | 1/8   | .315 | 1/2 | 1/4  |
| 8941     | 3/16  | .423 | 1/2 | 7/32 |
| 8942     | 1/4   | .457 | 1/2 | 7/32 |
| 8943     | 5/16  | .495 | 1/2 | 7/32 |
| 8944     | 3/8   | .529 | 1/2 | 7/32 |
| 8945     | 7/16  | .560 | 1/2 | 7/32 |
| 8946     | 1/2   | .592 | 1/2 | 7/32 |
| 8947     | 9/16  | .623 | 1/2 | 7/32 |
| 8948     | 5/8   | .654 | 1/2 | 7/32 |
| 8949     | 11/16 | .752 | 1/2 | 7/32 |
| 8950     | 3/4   | .783 | 1/2 | 7/32 |
| 8951     | 7/8   | .845 | 1/2 | 7/32 |
| 8952     | 1     | .908 | 1/2 | 7/32 |
| 8955     | 1/8   | 1/8  | 3/8 | 7/32 |
| 8956     | 3/16  | .378 | 3/8 | 7/32 |
| 8957     | 1/4   | .409 | 3/8 | 7/32 |
| 8958     | 5/16  | .441 | 3/8 | 7/32 |
| 8959     | 3/8   | .471 | 3/8 | 7/32 |
| 8960     | 7/16  | .519 | 3/8 | 7/32 |
| 8961     | 1/2   | .550 | 3/8 | 7/32 |



|   |        |                                       |                             |
|---|--------|---------------------------------------|-----------------------------|
| MATERIAL NYLON TYPE 6/6                           |        | FINISH BLACK                          |                             |
| DIMENSIONAL TOLERANCES UNLESS OTHERWISE SPECIFIED |        | TITLE                                 |                             |
| .XX   | .XXX   | 8940 THRU 8952                        |                             |
| ---   | ----   | 8955 THRU 8961                        |                             |
| FRACTIONS   | ANGLES | CABLE CLAMPS                          |                             |
| ---   | SCALE  | Electronic Connectors and Hardware    |                             |
| HEAT TREAT  | NONE   | 632 Arch Street, Meadville, Pa. 16335 |                             |
| PLUT SCALE  | 1=1    | DRAWN B. FRANKLIN                     | DATE 1-3-90                 |
|   |        | CHECKED E. MCKINNEY                   | DATE 1-14-91                |
|   |        | APPROVED D. MILLER                    | DATE 1-14-91                |
|   |        | SIZE B                                | DRAWING NUMBER SD: SMP00134 |
|   |        |                                       | ISSUE C                     |

**ABBATRON**