

Crydom

See full Datasheet below...

onlinecomponents.com
THE ONLINE DISTRIBUTOR OF ELECTRONIC COMPONENTS

BUY NOW

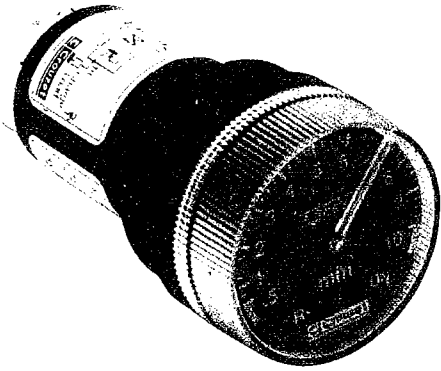
 **MASTER**TM
E L E C T R O N I C S

BUY NOW

masterelectronics.com & onlinecomponents.com
are **authorized** e-commerce distributors
of electronic components.

88 901 SERIES

DELAY ON MAKE TIMER

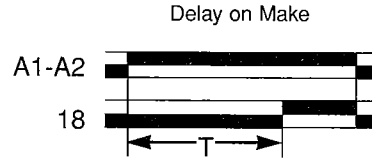


- 22mm Panel Mount Timer
- 2 Wire AC or 3 Wire DC
- PLC Compatible
- Nema 4 Rating

DESCRIPTION:

The 88 901 Series is a front panel mount analog timer with a Nema 4 front panel. The unit is available in a 2 wire AC (110/220 V) or 3 Wire DC (24 V PNP Transistor) Configuration. The unit can drive a contactor or be connected, for the 3 wire DC version, between the input and the output of a PLC for remote setting of a time variable. The delay on make timer is available in 10 different time ranges from 1 sec. to 30 min. The device is protected against reverse polarity and short-circuit.

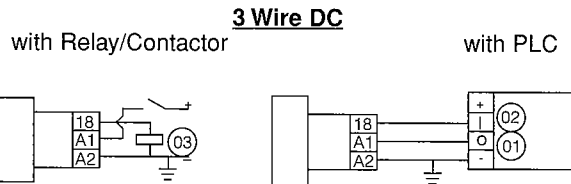
FUNCTION:



SPECIFICATIONS:

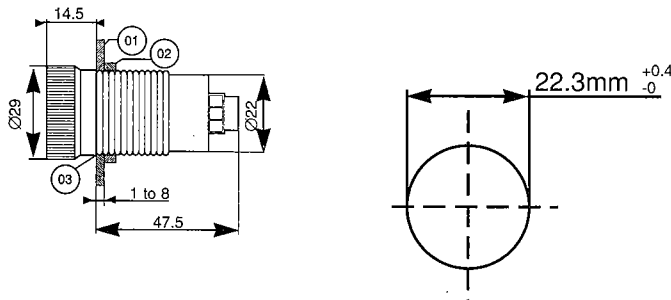
	<u>3Wire</u>	<u>2Wire</u>
Input Power	24 VDC	90 to 260 VAC/DC
Output	PNP Open Collector	SCR
Max. Current at 20°C	200 mA	400 mA
Off State Voltage Drop	< 3 VDC	< 4 VAC
Derating	1.5 mA/°C	2.5 mA/°C
Off State Leakage Current	< 1 mA	< 4 mA
Max Reset Time: during timing	20 ms	120 ms
after timing	20 ms	15 ms
Display Accuracy	± 5%	± 5%
Repeat Accuracy	± 0.2%	± 0.2%
Dielectric Strength	1500 V/1 min.	1500 V/1 min.
Power Consumption	1W	1.5 VA
Connections	Screw Terminals	
Temperature Range	-4°F to 140°F	
Weight	8 oz.	

WIRING:

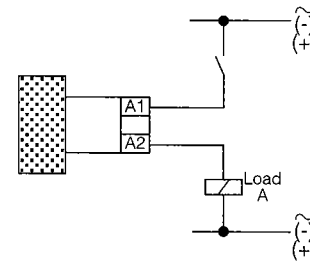


01 - Output of programmable controller
 02 - Input of programmable controller
 03 - Load

DIMENSIONS: (mm)



2 Wire Ac



ORDERING INFORMATION: (10 pcs. minimum)

<u>Part Number</u>	
24 VDC Version	110/220 VAC Version
88 901 102	88 901 108
88 901 112	88 901 118
88 901 122	88 901 128
88 901 132	88 901 138
88 901 142	88 901 148
88 901 152	88 901 158
88 901 162	88 901 168
88 901 172	88 901 178
88 901 182	88 901 188

Time Range

- .05 to 1 sec
- .15 to 3 sec
- .5 to 10 sec
- 1.5 to 30 sec
- 3 to 60 sec
- 5 to 100 sec
- 15 to 300 sec
- .5 to 10 min
- 1.5 to 30 min