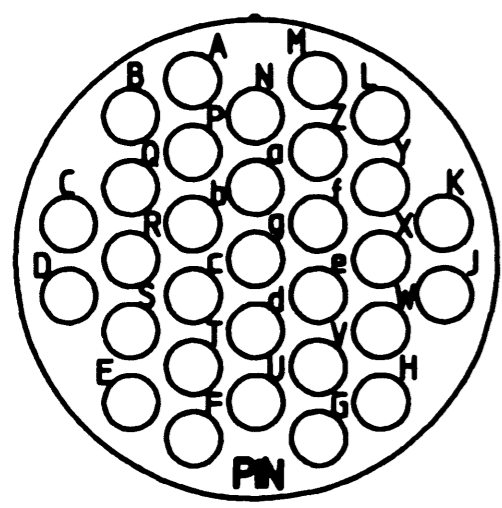
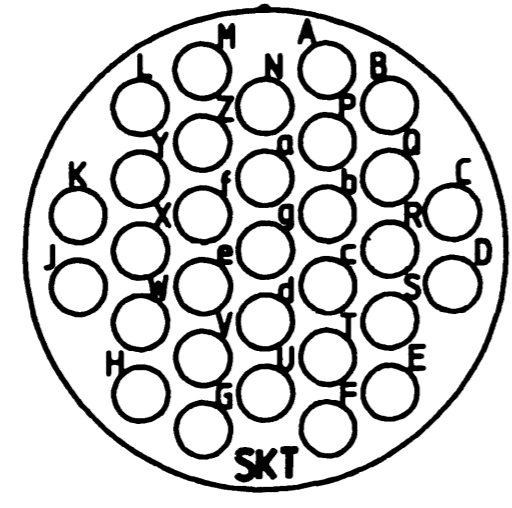


B 88057-24-31

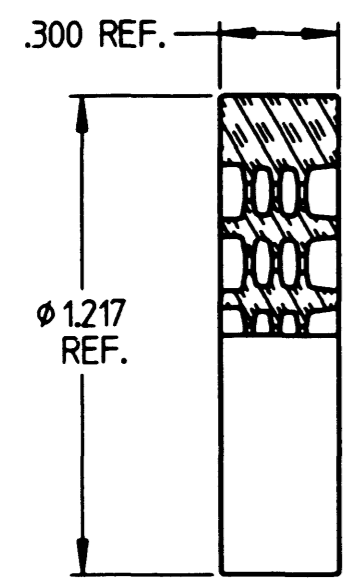
REVISIONS		
REV	DESCRIPTION	DATE
B	REDESIGNED AND REDRAWN PER E.O. C1611	4-25-94
		<i>AJG</i>



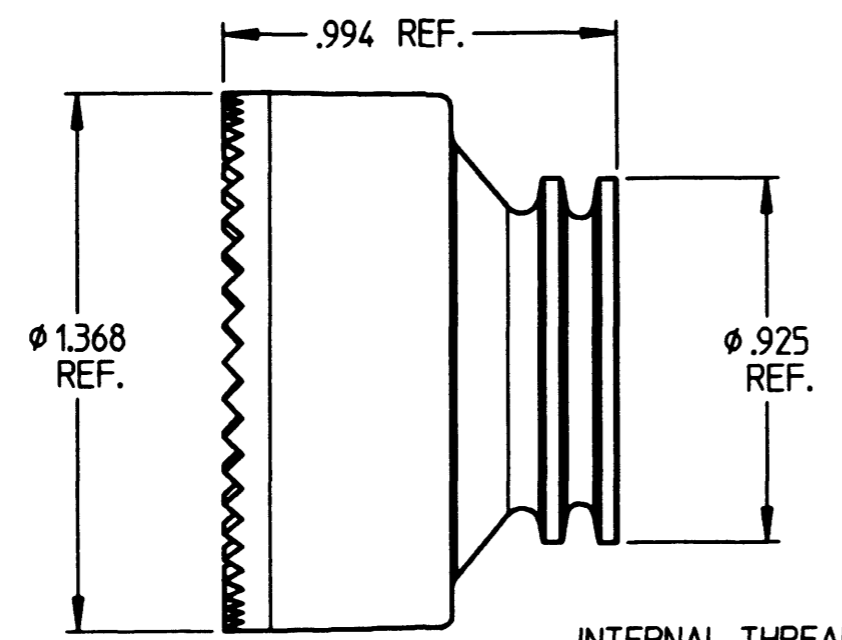
GROMMET  
PIN SIDE



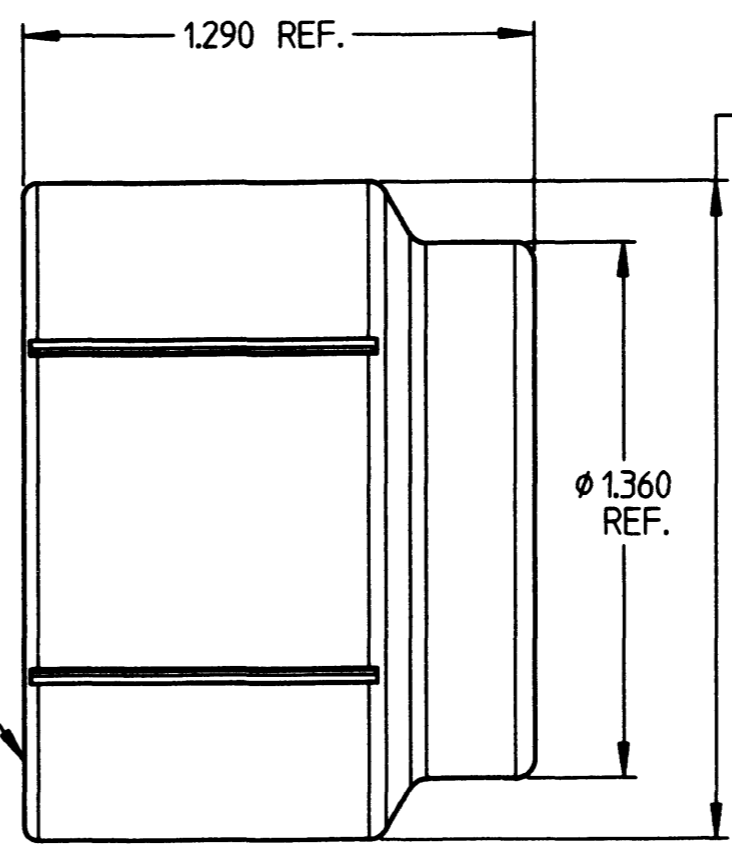
GROMMET  
SOCKET SIDE



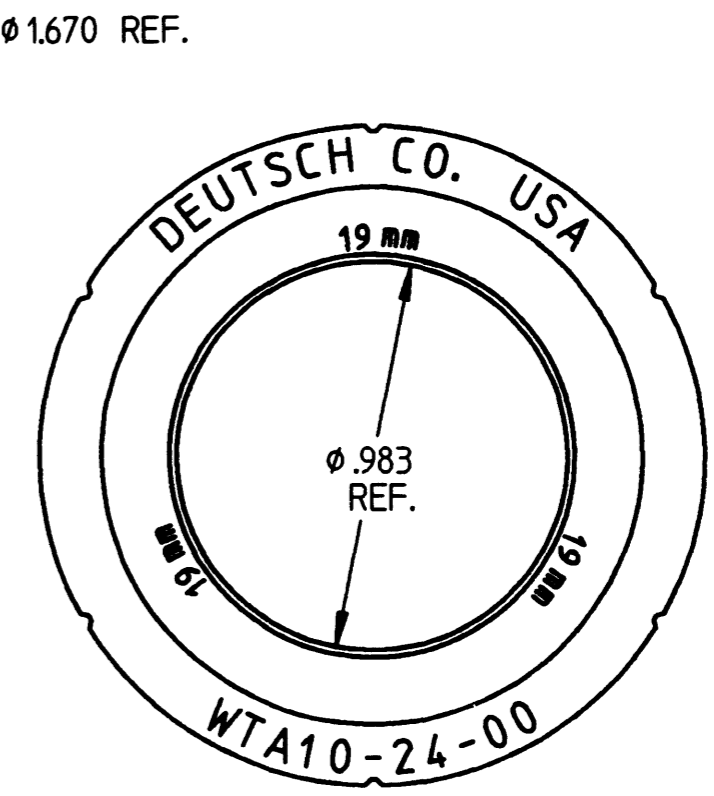
SECONDARY GROMMET  
WTA10-24-03



FOLLOWER  
WTA10-24-02/19



COUPLING NUT  
WTA10-24-01/19




INTERNAL THREAD  
1.4375-18 UNEF 2B

6. EXACT POSITION OF CAVITY IDENTIFICATION OR PART NUMBER MAY VARY.
5. ALL COMPONENT PARTS SHOWN (-01/19, -02/19, -03) ARE INCLUDED IN ALLISON TOP LEVEL P/N: WTA10-24-00/19.
4. ARRANGEMENT OF SECONDARY GROMMET IS 24-31 PER MIL-STD-1669 AND IS REVERSIBLE DEPENDING ON PIN OR SOCKET ARRANGEMENT.
3. BACKSHELL IS FOR  $\phi .742$  I.D. /  $.973$  O.D. SPLIT CONVOLUTED TUBING.
2. PARTS ARE SHIPPED LOOSE.

NOTE: 1. ALL DIMENSIONS ARE IN INCHES.

SIGNATURE & DATE	
DR	R. GROSS 3-16-94
CHK	<i>A. J. Gross</i> 4/25/94
PE	R. Gross 3-16-94
APPD	
SCALE	NONE
WT	

BACKSHELL SYSTEM  
ALLISON WTA10-24-00/19  
SIZE 24  
FOR 19 MM SPLIT CONVOLUTED TUBING  
WITH 24-31 ARR. SECONDARY GROMMET  
ENVELOPE

CP		MATL CODE	
<b>DEUTSCH</b> ENGINEERED CONNECTING DEVICES			
 Municipal Airport Banning, California			
<b>B</b>	88057-24-31		
DWG SIZE	CODE 11159	SHEET 1 OF 1	

88057-24-31\_env\_B