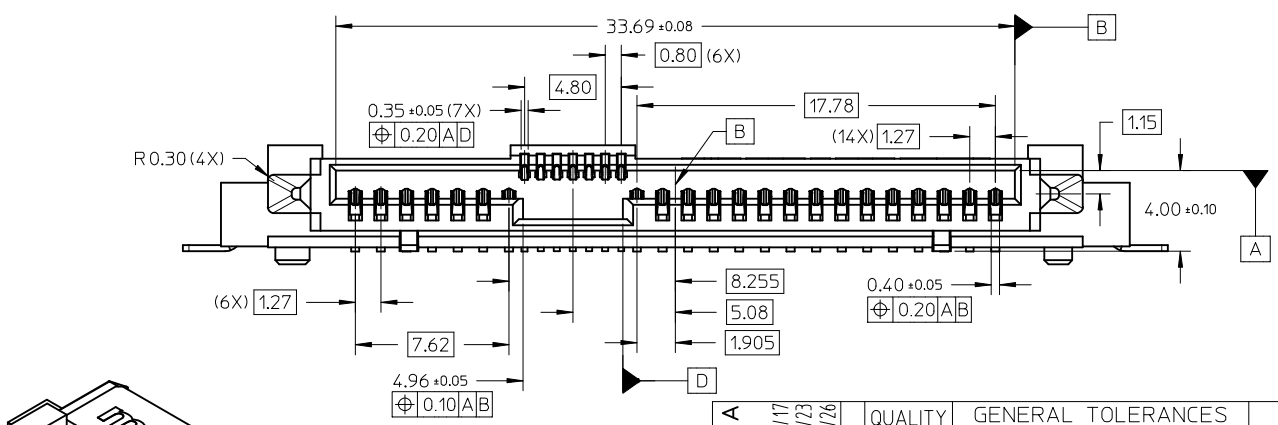
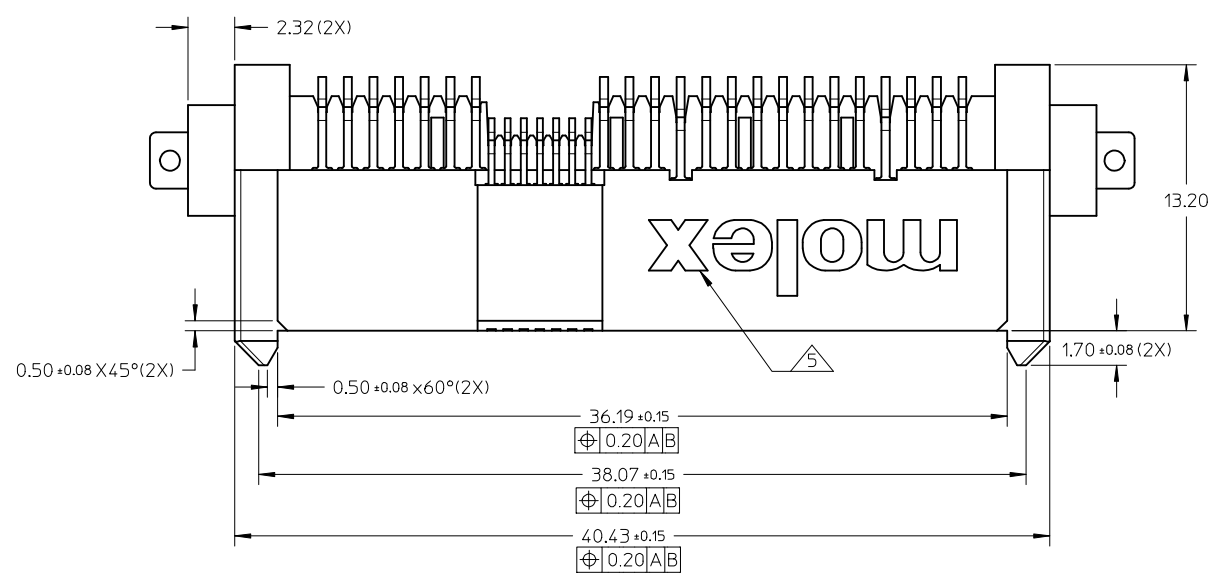
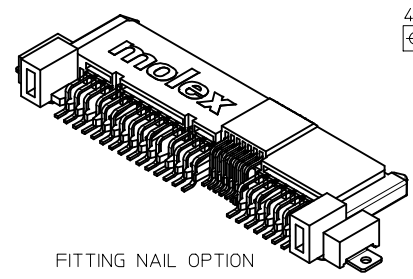
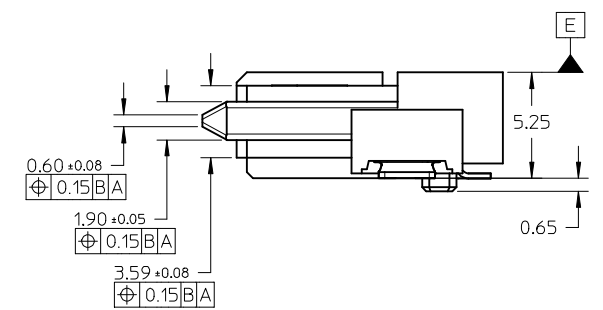


PART NUMBERS IN TRAY	HOLD DOWN OPTION
87975-3001	FITTING NAIL



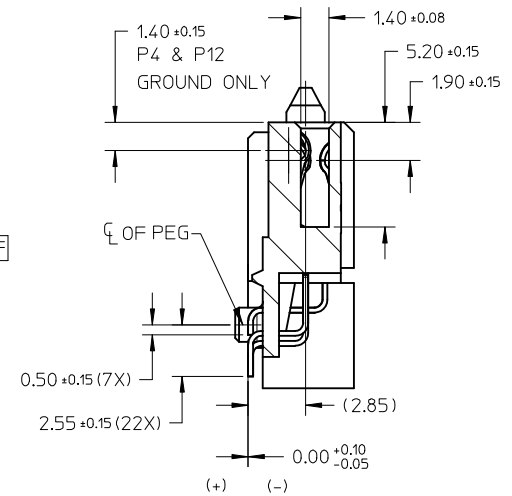
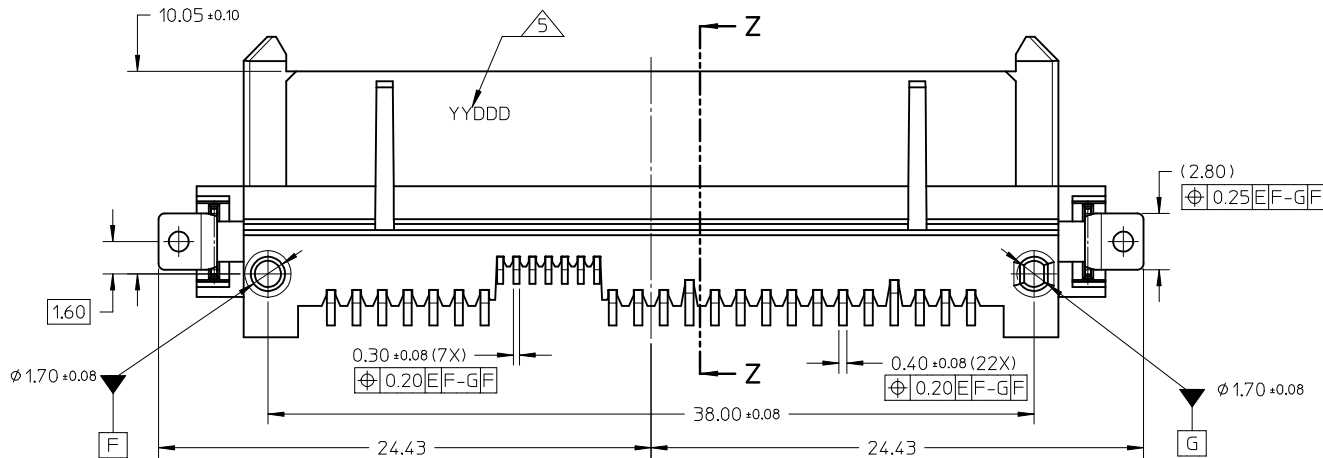
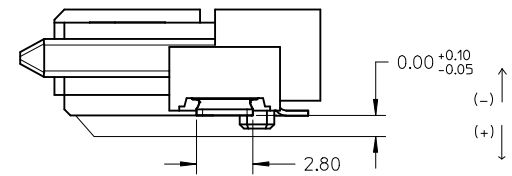
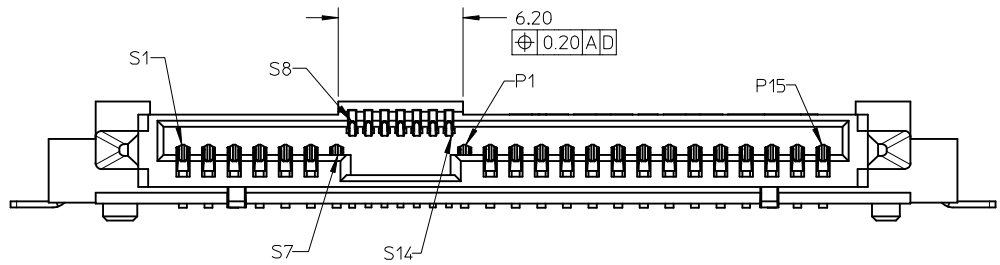
NOTES:

- MATERIAL:
HOUSING: NYLON, GLASS FILLED, UL 94V-0, BLACK.
TERMINAL/FITTING NAIL: COPPER ALLOY.
- FINISHES:
TERMINAL:
CONTACT: 0.76µm MIN. SELECTIVE GOLD OVER 1.27µm MIN.
NICKEL UNDERPLATE.
SOLDERTAIL: 2.54µm MIN. TIN OVER 1.27µm MIN.
NICKEL UNDERPLATE.
FITTING NAIL: 3.18µm MIN. TIN OVER 1.27µm MIN.
NICKEL UNDERPLATE.
- PRODUCT SPECIFICATION: PS-87975-102
- TRAY PACKAGING SPECIFICATION: PK-87975-300
MOLEX LOGO AND DATE CODE LOCATED APPROXIMATELY AS SHOWN.
- NON FUNCTIONAL CORING MAY VARY.
- THIS PRODUCT IS COMPLIANT TO RoHS DIRECTIVE WITH THE FOLLOWING BANNED SUBSTANCES - LEAD, MERCURY, CADMIUM, HEXAVALENT CHROMIUM, POLYBROMINATED BIPHENYLS AND POLYBROMINATED DIPHENYL ETHERS.
- MATES WITH: SFF-8482 PLUG
SATA PLUG SERIES 87679, 87703 AND 87799



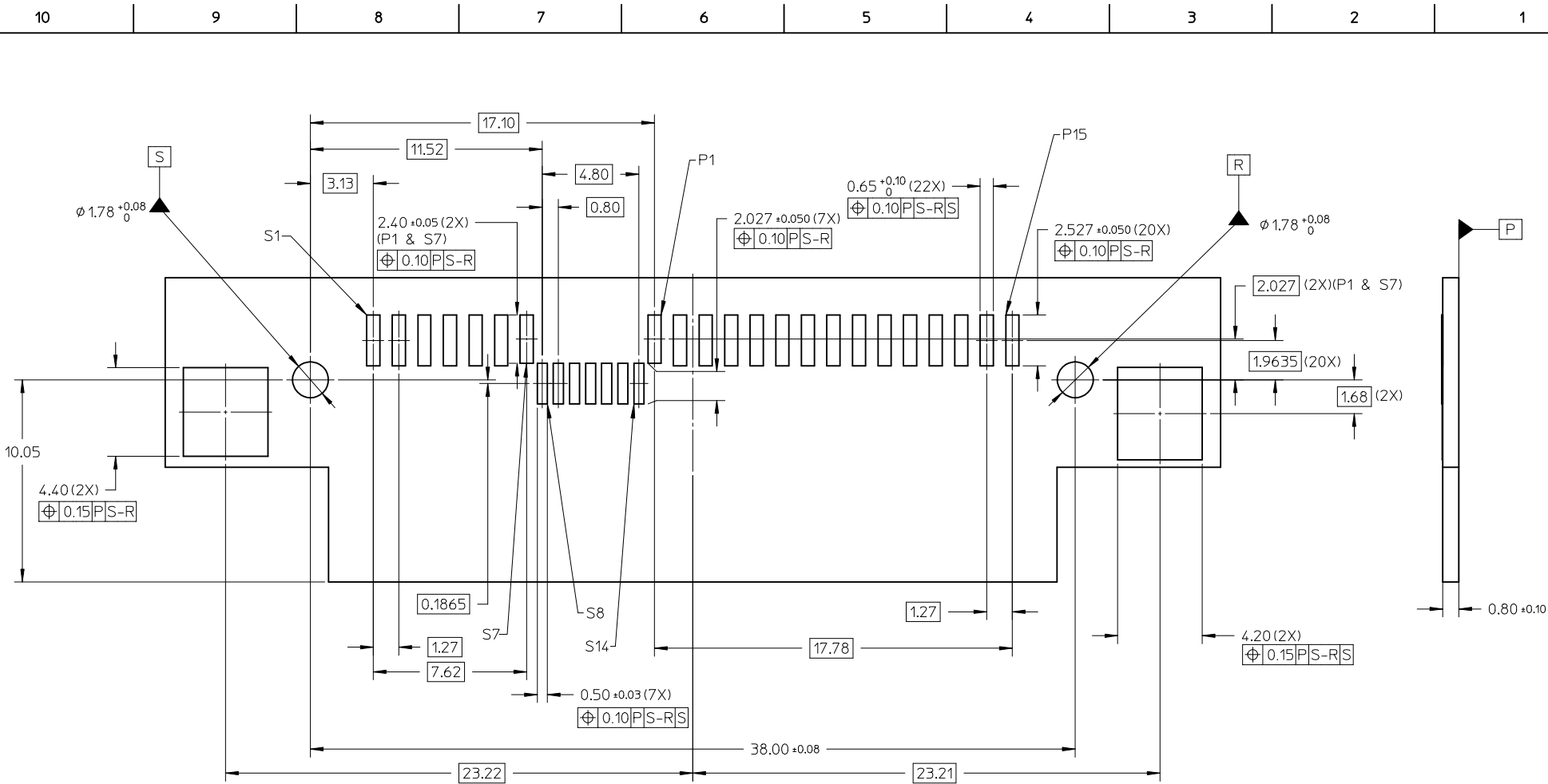
FITTING NAIL OPTION

RELEASED TO REV A EC NO: S2017-0037 DRWN:SKANG 2016/08/17 CHKD:CWANG/5 2016/09/23 APPR:SHONG 2016/09/26	QUALITY SYMBOLS $F_A=0$ $F_E=0$ $F_P=0$	GENERAL TOLERANCES (UNLESS SPECIFIED)		DIMENSION STYLE MM ONLY	SCALE NTS	DESIGN UNITS METRIC	THIRD ANGLE PROJECTION		
		mm	INCH	DRAWN BY	DATE	TITLE	SERIAL ATTACH SCSI RECEPTACLE, R/A SMT, 2.85MM HEIGHT molex SD-87975-301	SHEET NO. 1 OF 3	
		4 PLACES	± ---	± ---	WJYAP	2012/08/10			
		3 PLACES	± ---	± ---	CHECKED BY	DATE			
2 PLACES	± 0.20	± ---	SCHEONG	2012/09/03					
1 PLACE	± ---	± ---	APPROVED BY	DATE					
0 PLACE	± ---	± ---	BOKOK	2012/09/03					
DRAFT WHERE APPLICABLE MUST REMAIN WITHIN DIMENSIONS		MATERIAL NO. SEE TABLE		DOCUMENT NO. SEE TABLE					
		ANGULAR ± 3 °		THIS DRAWING CONTAINS INFORMATION THAT IS PROPRIETARY TO MOLEX INCORPORATED AND SHOULD NOT BE USED WITHOUT WRITTEN PERMISSION					



SECTION Z-Z

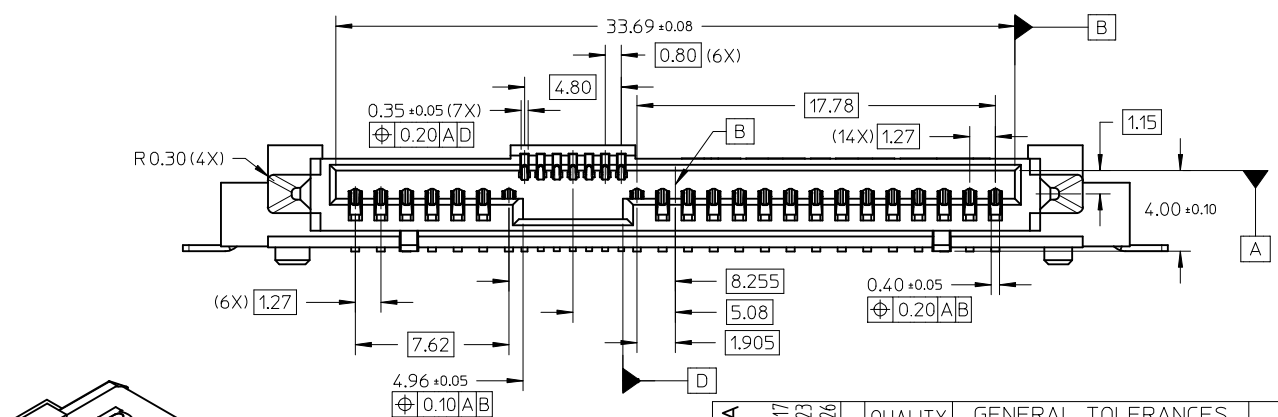
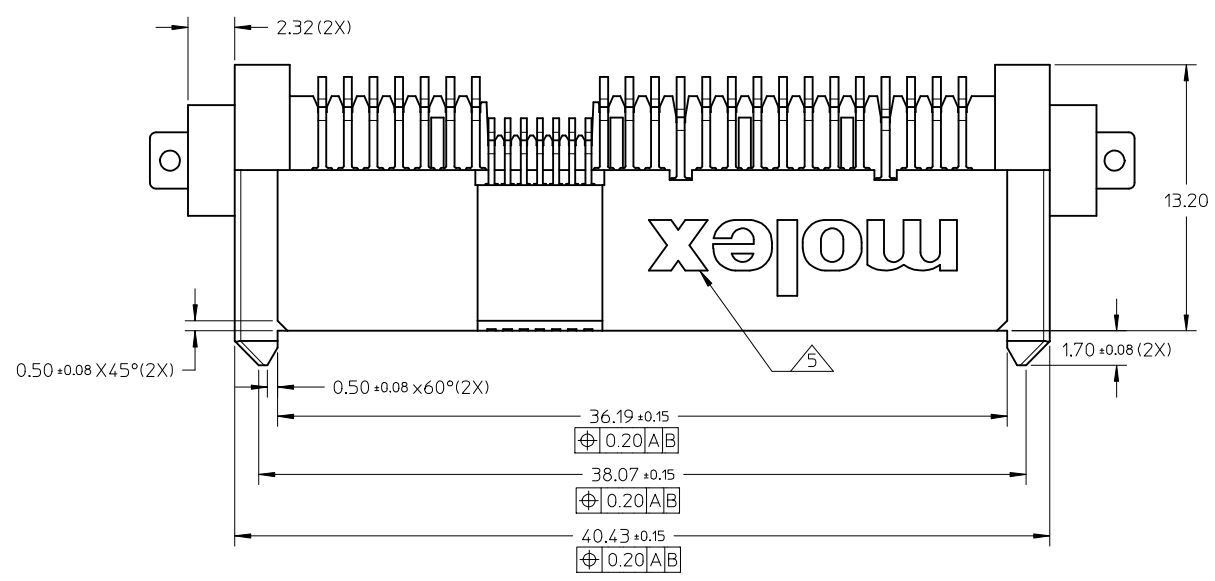
RELEASED TO REV A EC NO: S2017-0037 DRWN:SKANG 2016/08/17 CHKD:CWANG25 2016/09/23 APPR:SHONG 2016/09/26	DESCRIPTION REV	QUALITY SYMBOLS	GENERAL TOLERANCES (UNLESS SPECIFIED)		DIMENSION STYLE MM ONLY		SCALE NTS	DESIGN UNITS METRIC	THIRD ANGLE PROJECTION	
		$F_A = 0$	mm	INCH	DRAWN BY	DATE	TITLE	SERIAL ATTACH SCSI RECEPTACLE, R/A SMT, 2.85MM HEIGHT molex SD-87975-301 SHEET NO. 2 OF 3		
		$F_G = 0$	4 PLACES	± ---	± ---	WJYAP	2012/08/10			
		$F_P = 0$	3 PLACES	± ---	± ---	CHECKED BY	DATE			
	2 PLACES	± 0.20	± ---	SCHEONG	2012/09/03					
		1 PLACE	± ---	± ---	APPROVED BY	DATE				
		0 PLACE	± ---	± ---	BOKOK	2012/09/03				
		ANGULAR ± 3 °		MATERIAL NO.		DOCUMENT NO.				
		DRAFT WHERE APPLICABLE MUST REMAIN WITHIN DIMENSIONS		SEE TABLE						
				SIZE A3		THIS DRAWING CONTAINS INFORMATION THAT IS PROPRIETARY TO MOLEX INCORPORATED AND SHOULD NOT BE USED WITHOUT WRITTEN PERMISSION				



RECOMMENDED PCB LAYOUT

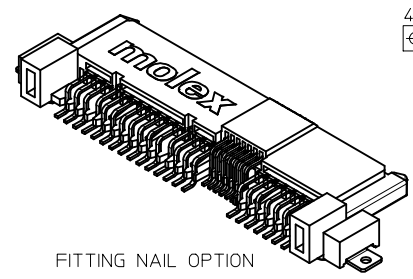
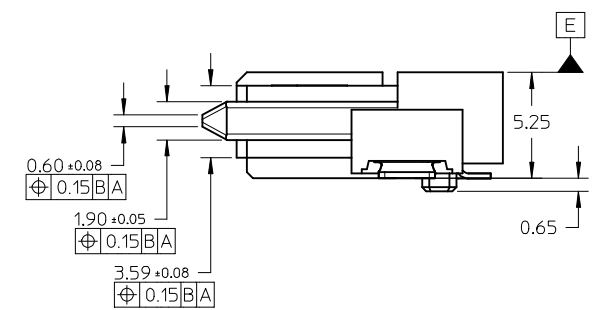
RELEASED TO REV A EC NO: S2017-0037 DRWN:SKANG 2016/08/17 CHKD:CWANG/25 2016/09/23 APPR:SHONG 2016/09/26	QUALITY SYMBOLS $F_A=0$ $F_G=0$ $F_P=0$	GENERAL TOLERANCES (UNLESS SPECIFIED)		DIMENSION STYLE MM ONLY		SCALE NTS	DESIGN UNITS METRIC	THIRD ANGLE PROJECTION	
			mm	INCH	DRAWN BY	DATE	TITLE		
		4 PLACES	± ---	± ---	WJYAP	2012/08/10	SERIAL ATTACH SCSI RECEPTACLE, R/A SMT, 2.85MM HEIGHT 		
		3 PLACES	± ---	± ---	CHECKED BY	DATE			
2 PLACES	± 0.20	± ---	SCHEONG	2012/09/03	MATERIAL NO. DOCUMENT NO. SHEET NO.				
1 PLACE	± ---	± ---	APPROVED BY	DATE	SD-87975-301 3 OF 3				
0 PLACE	± ---	± ---	BOKOK	2012/09/03	SEE TABLE THIS DRAWING CONTAINS INFORMATION THAT IS PROPRIETARY TO MOLEX INCORPORATED AND SHOULD NOT BE USED WITHOUT WRITTEN PERMISSION				
DRAFT WHERE APPLICABLE MUST REMAIN WITHIN DIMENSIONS		ANGULAR ± 3 °		SIZE A3					

PART NUMBERS IN TRAY	HOLD DOWN OPTION
87975-3001	FITTING NAIL



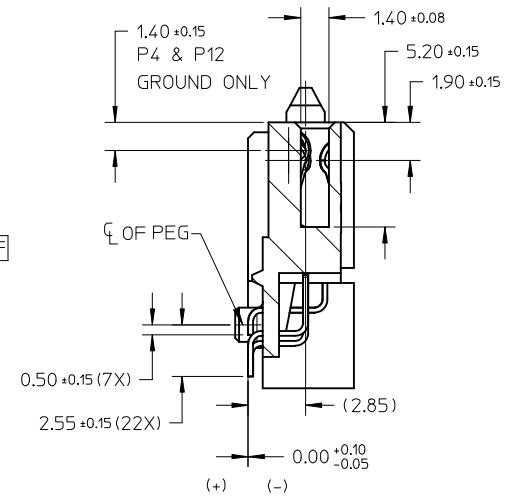
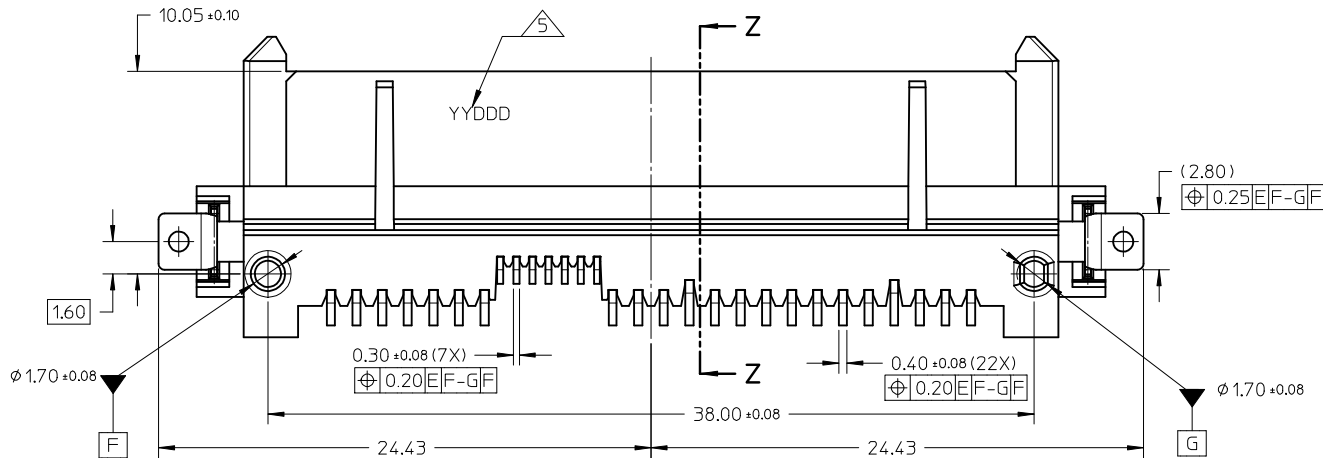
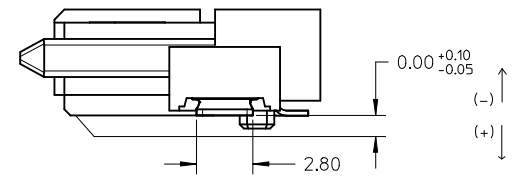
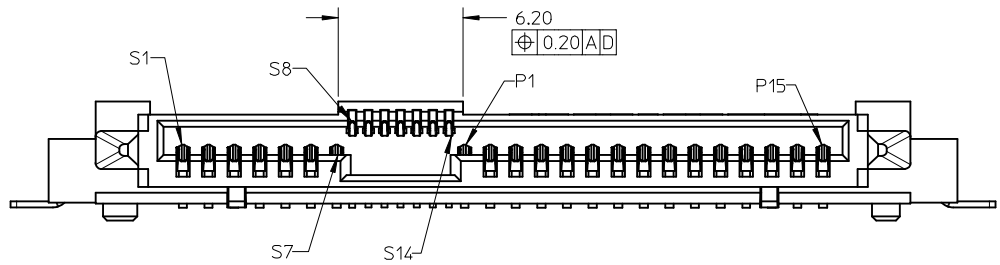
NOTES:

- MATERIAL:
HOUSING: NYLON, GLASS FILLED, UL 94V-0, BLACK.
TERMINAL/FITTING NAIL: COPPER ALLOY.
- FINISHES:
TERMINAL:
CONTACT: 0.76µm MIN. SELECTIVE GOLD OVER 1.27µm MIN.
NICKEL UNDERPLATE.
SOLDERTAIL: 2.54µm MIN. TIN OVER 1.27µm MIN.
NICKEL UNDERPLATE.
FITTING NAIL: 3.18µm MIN. TIN OVER 1.27µm MIN.
NICKEL UNDERPLATE.
- PRODUCT SPECIFICATION: PS-87975-102
- TRAY PACKAGING SPECIFICATION: PK-87975-300
MOLEX LOGO AND DATE CODE LOCATED APPROXIMATELY AS SHOWN.
- NON FUNCTIONAL CORING MAY VARY.
- THIS PRODUCT IS COMPLIANT TO RoHS DIRECTIVE WITH THE FOLLOWING BANNED SUBSTANCES - LEAD, MERCURY, CADMIUM, HEXAVALENT CHROMIUM, POLYBROMINATED BIPHENYLS AND POLYBROMINATED DIPHENYL ETHERS.
- MATES WITH: SFF-8482 PLUG
SATA PLUG SERIES 87679, 87703 AND 87799



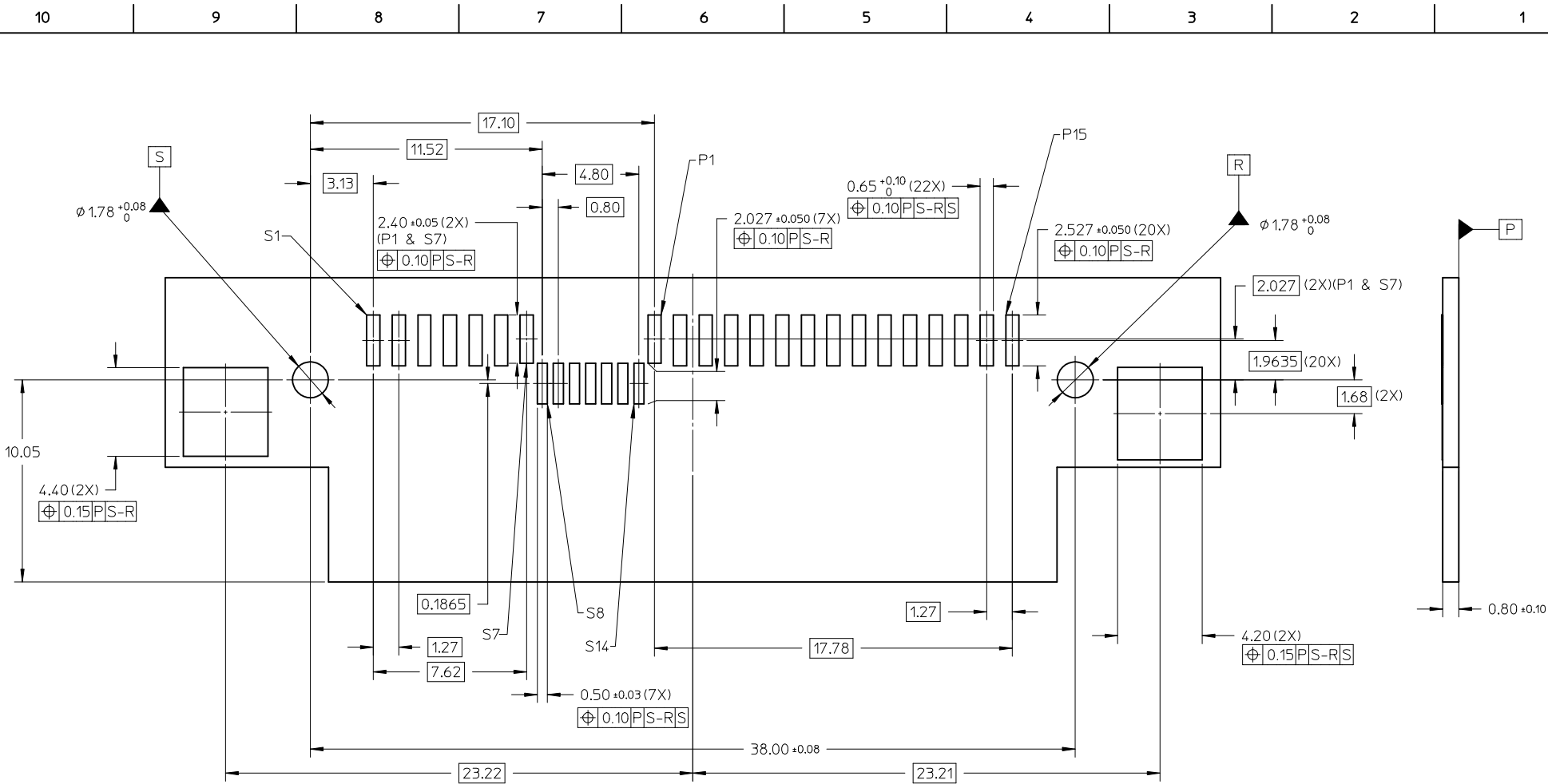
FITTING NAIL OPTION

RELEASED TO REV A EC NO: S2017-0037 DRWN:SKANG 2016/08/17 CHKD:CWANG/5 2016/09/23 APPR:SHONG 2016/09/26	QUALITY SYMBOLS F _A =0 F _E =0 F _P =0	GENERAL TOLERANCES (UNLESS SPECIFIED)		DIMENSION STYLE	SCALE	DESIGN UNITS	THIRD ANGLE PROJECTION
		mm	INCH	MM ONLY	NTS	METRIC	
REV A	DESCRIPTION	4 PLACES	± ---	± ---	DRAWN BY	DATE	TITLE
		3 PLACES	± ---	± ---	WJYAP	2012/08/10	SERIAL ATTACH SCSI RECEPTACLE, R/A SMT, 2.85MM HEIGHT
		2 PLACES	± 0.20	± ---	CHECKED BY	DATE	
		1 PLACE	± ---	± ---	SCHEONG	2012/09/03	SD-87975-301
		0 PLACE	± ---	± ---	APPROVED BY	DATE	
		ANGULAR ± 3 °		MATERIAL NO.	DOCUMENT NO.		1 OF 3
DRAFT WHERE APPLICABLE MUST REMAIN WITHIN DIMENSIONS		SEE TABLE		THIS DRAWING CONTAINS INFORMATION THAT IS PROPRIETARY TO MOLEX INCORPORATED AND SHOULD NOT BE USED WITHOUT WRITTEN PERMISSION			



SECTION Z-Z

RELEASED TO REV A EC NO: S2017-0037 DRWN:SKANG 2016/08/17 CHKD:CWANG25 2016/09/23 APPR:SHONG 2016/09/26	DESCRIPTION REV	QUALITY SYMBOLS	GENERAL TOLERANCES (UNLESS SPECIFIED)		DIMENSION STYLE MM ONLY		SCALE NTS	DESIGN UNITS METRIC	THIRD ANGLE PROJECTION			
		$\nabla_A = 0$ $\nabla_G = 0$ $\nabla_P = 0$	mm	INCH	DRAWN BY WJYAP	DATE 2012/08/10	TITLE SERIAL ATTACH SCSI RECEPTACLE, R/A SMT, 2.85MM HEIGHT					
			4 PLACES ± --- ± ---	3 PLACES ± --- ± ---	CHECKED BY SCHEONG	DATE 2012/09/03	molex SD-87975-301 SHEET NO. 2 OF 3					
			2 PLACES ± 0.20 ± ---	1 PLACE ± --- ± ---	APPROVED BY BOKOK	DATE 2012/09/03						
	0 PLACE ± --- ± ---	ANGULAR ± 3 °		MATERIAL NO. SEE TABLE		DOCUMENT NO.						
DRAFT WHERE APPLICABLE MUST REMAIN WITHIN DIMENSIONS			SIZE A3		THIS DRAWING CONTAINS INFORMATION THAT IS PROPRIETARY TO MOLEX INCORPORATED AND SHOULD NOT BE USED WITHOUT WRITTEN PERMISSION							



RECOMMENDED PCB LAYOUT

RELEASED TO REV A EC NO: S2017-0037 DRWN:SKANG 2016/08/17 CHKD:CWANG/25 2016/09/23 APPR:SHONG 2016/09/26	QUALITY SYMBOLS $F_A=0$ $F_G=0$ $F_P=0$	GENERAL TOLERANCES (UNLESS SPECIFIED)		DIMENSION STYLE MM ONLY		SCALE NTS	DESIGN UNITS METRIC	THIRD ANGLE PROJECTION		
			mm	INCH	DRAWN BY	DATE	TITLE			
		4 PLACES	± ---	± ---	WJYAP	2012/08/10	SERIAL ATTACH SCSI RECEPTACLE, R/A SMT, 2.85MM HEIGHT 			
		3 PLACES	± ---	± ---	CHECKED BY	DATE				
2 PLACES	± 0.20	± ---	SCHEONG	2012/09/03	MATERIAL NO. DOCUMENT NO. SHEET NO.					
1 PLACE	± ---	± ---	APPROVED BY	DATE	SD-87975-301 3 OF 3					
0 PLACE	± ---	± ---	BOKOK	2012/09/03	SEE TABLE THIS DRAWING CONTAINS INFORMATION THAT IS PROPRIETARY TO MOLEX INCORPORATED AND SHOULD NOT BE USED WITHOUT WRITTEN PERMISSION					
DRAFT WHERE APPLICABLE MUST REMAIN WITHIN DIMENSIONS		ANGULAR ± 3 °		SIZE A3						