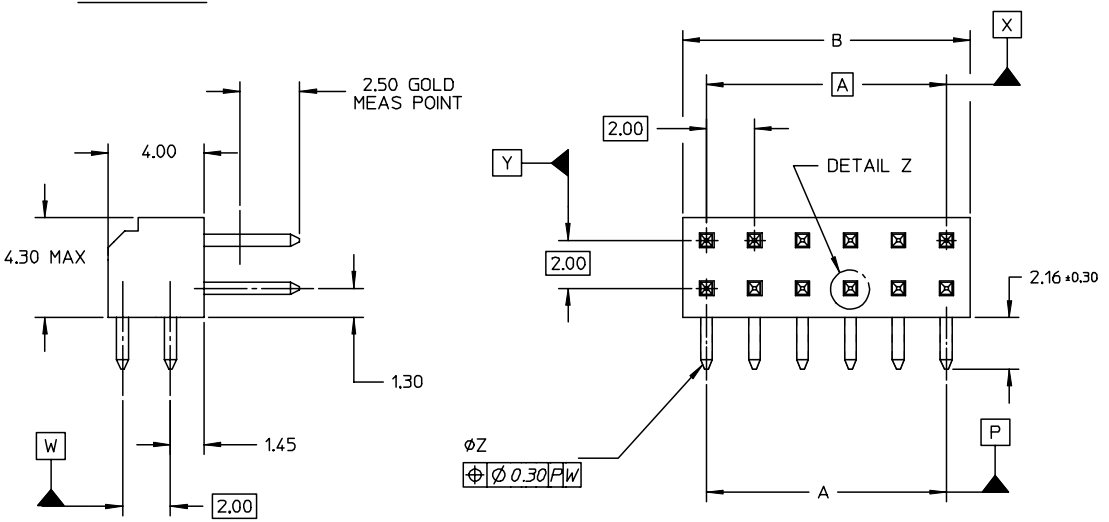
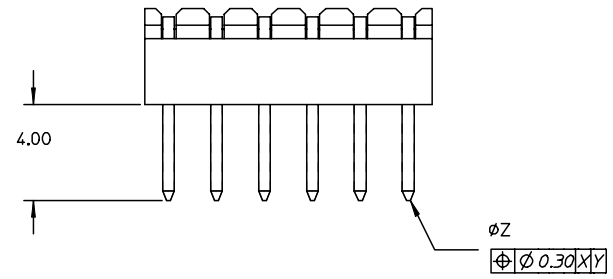
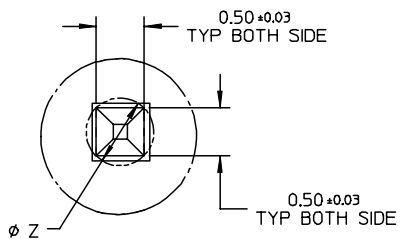


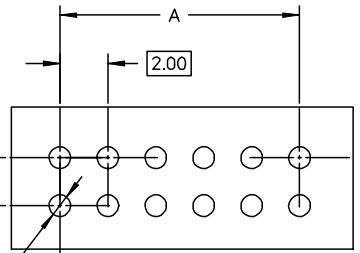
87760

PART NUMBER	CKT SIZE	A	B
87760-0878	08	6.00	8.00
87760-1078	10	8.00	10.00
87760-1278	12	10.00	12.00
87760-1678	16	14.00	16.00
87760-2278	22	20.00	12.00
87760-3078	30	28.00	30.00



**LEGEND:**  
 87760 - \* \* 7 8  
 CKT SIZE (SEE TABLE)      PLATING (SEE NOTE 2)

- NOTES:**
- MATERIAL:  
 HSG: PCT, 30% GLASS FILLED, UL 94V-0, COLOUR BLACK.  
 PIN: 0.50MM SQ PHOSPHOR BRONZE 510
  - PLATING:  
 0.38um MIN GOLD IN CONTACT AREA, TIN IN SOLDER TAIL AREA, BOTH OVER NICKEL OVERALL
  - 12 CKT USED FOR ILLUSTRATION ONLY
  - PART TO BE PACKED IN POCKET TRAY.
  - PRODUCT SPEC PS-87761-100 APPLIES.
  - RECOMMENDED PCB BOARD THK 1.30±0.10 MM. MAX.



Ø 0.90 ± 0.05  
 Ø 0.20

EC NO: S2004-0195 DRWN: KSEE 2003/12/15 CHKD: KCLING 2003/12/15 APPR: SKTOH 2003/12/19 A	DESCRIPTION REV	QUALITY SYMBOLS	GENERAL TOLERANCES (UNLESS SPECIFIED)	SCALE NTS	DESIGN UNITS METRIC	THIRD ANGLE PROJECTION	REVISE ON CAD ONLY														
		▽ = 0	<table border="1"> <thead> <tr> <th></th> <th>mm</th> <th>INCH</th> </tr> </thead> <tbody> <tr> <td>4 PLACES</td> <td>± ---</td> <td>± ---</td> </tr> <tr> <td>3 PLACES</td> <td>± ---</td> <td>± ---</td> </tr> <tr> <td>2 PLACES</td> <td>± 0.2</td> <td>± ---</td> </tr> <tr> <td>1 PLACE</td> <td>± ---</td> <td>± ---</td> </tr> </tbody> </table>		mm	INCH	4 PLACES	± ---	± ---	3 PLACES	± ---	± ---	2 PLACES	± 0.2	± ---	1 PLACE	± ---	± ---	DIMENSION STYLE MM ONLY	TITLE	
			mm	INCH																	
		4 PLACES	± ---	± ---																	
3 PLACES	± ---	± ---																			
2 PLACES	± 0.2	± ---																			
1 PLACE	± ---	± ---																			
▽ C = 0	ANGULAR ± 1 °	DRAWN BY DATE KSEE 2003/10/16	CHECKED BY DATE KCLING 2003/12/02	SALES DRAWING MGRID 2MM DUAL ROW R/A HDR.																	
	DRAFT WHERE APPLICABLE	APPROVED BY DATE SKTOH 2003/12/11	MATERIAL NO. SEE TABLE	DOCUMENT NO. SD-87760-126	SHEET NO. 1 OF 1																
			MUST REMAIN WITHIN DIMENSIONS	THIS DRAWING CONTAINS INFORMATION THAT IS PROPRIETARY TO MOLEX INCORPORATED AND SHOULD NOT BE USED WITHOUT WRITTEN PERMISSION			B														