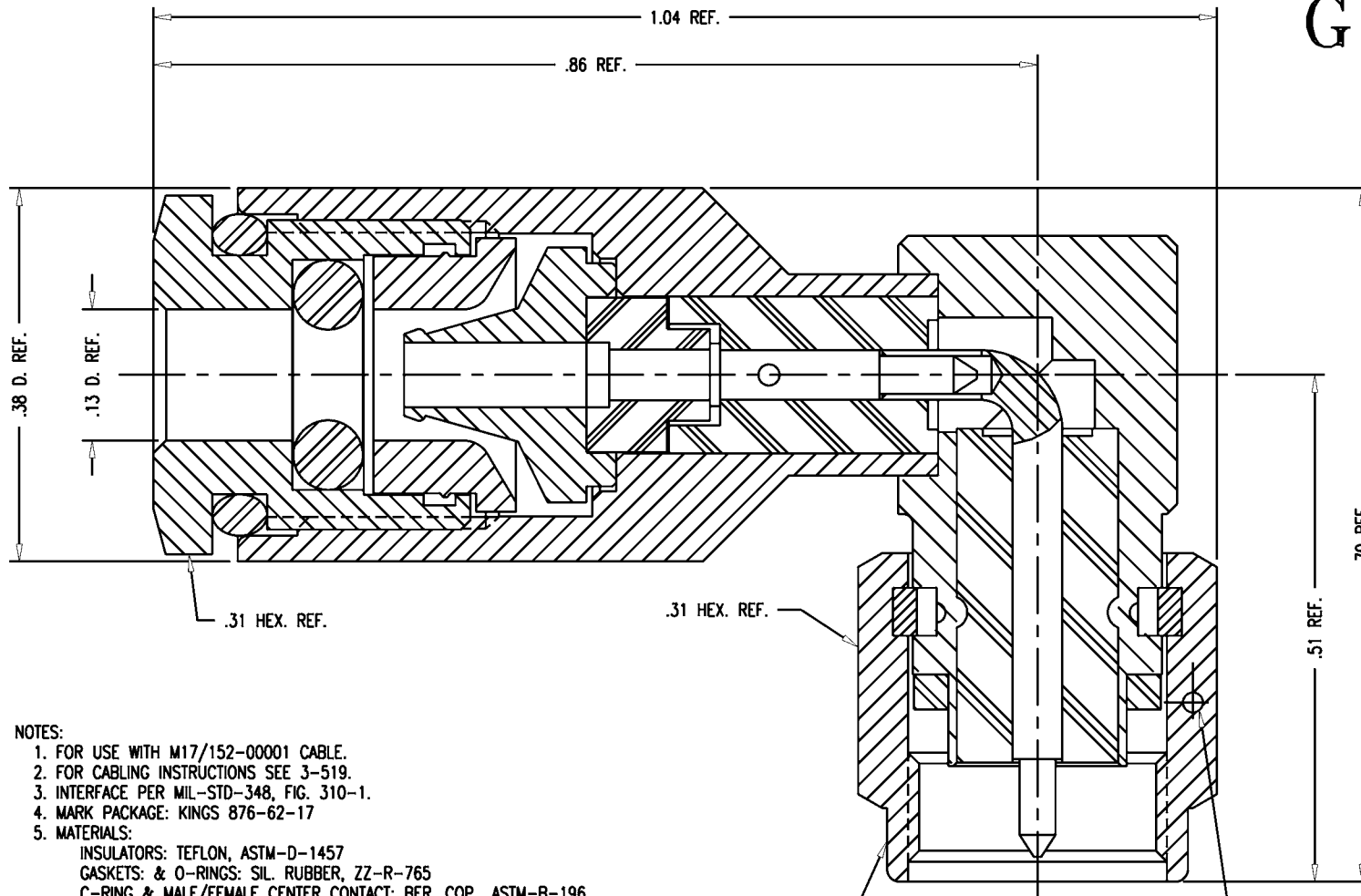


GSD

M39012/56-3030



NOTES:

1. FOR USE WITH M17/152-00001 CABLE.
2. FOR CABLING INSTRUCTIONS SEE 3-519.
3. INTERFACE PER MIL-STD-348, FIG. 310-1.
4. MARK PACKAGE: KINGS 876-62-17
5. MATERIALS:
 INSULATORS: TEFLON, ASTM-D-1457
 GASKETS: & O-RINGS: SIL. RUBBER, ZZ-R-765
 C-RING & MALE/FEMALE CENTER CONTACT: BER. COP., ASTM-B-196
 MALE CENTER CONTACT: BRASS, ASTM-B16
 ALL OTHER METAL PARTS: ST. STEEL, 303
6. FINISHES:
 CENTER CONTACTS: HARD GOLD PLATE PER MIL-G-45204
 ALL OTHER METAL PARTS: PASSIVATED PER QQ-P-35
7. ELECTRICAL CHARACTERISTICS:
 NOMINAL IMPEDANCE: 50 OHMS
 VOLTAGE RATING: 250 VOLTS RMS
 FREQUENCY RANGE: DC TO 12.4GHz

REVISIONS

ISSUE	CHANGES
0	ER 34284 KH 11/20/92
1	CN 34662 C JCA 05/25/93
2	CN 35318 C KH 02/08/94

DET1138

SCALE 8:1

APPROX SURFACE AREA

876-62-17

USED ON

REF:

PLUG, SMA, ANGLE,
W/P TAPER GRIP

DRAWN MJB DATE 10/01/92

DESIGN GA DATE 04/27/93

APPR. DATE

KINGS
ELECTRONICS CO., INC.
TUCKAHOE, NEW YORK 10707

M39012/56-3030

GSD