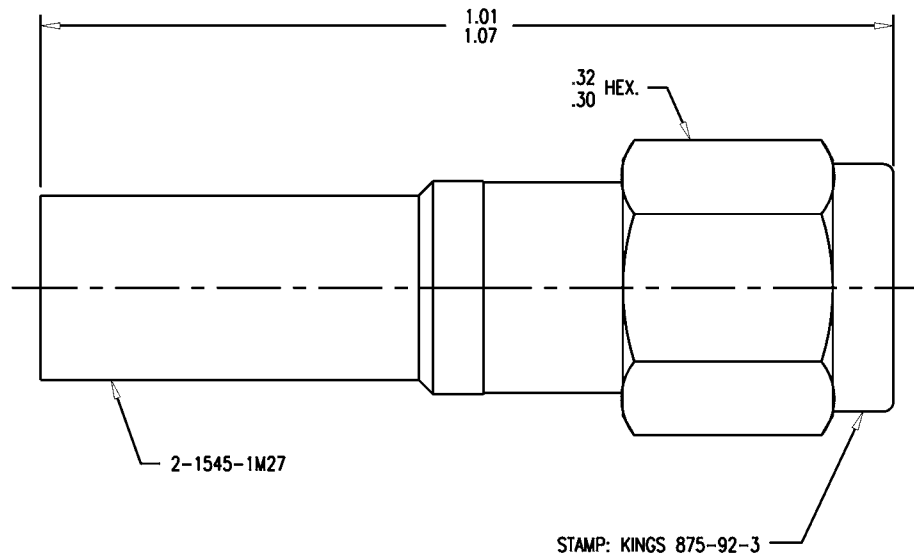


GSD

875-92-3



- NOTES:
- FOR USE WITH BOEING S280W503-1 & ADAMS RUSSELL FC11Z CABLES.
 - FOR CABLING INSTRUCTIONS SEE 3-546-1.
 - FOR CRIMPING USE DIE KTH-2214.
 - INTERFACE PER MIL-STD-348, FIG. 310-1.
 - CENTER CONTACT (1-1027-4MA9) SUPPLIED UNASSEMBLED.
 - MARK PACKAGE: KINGS 875-92-3
XX XX (DATE CODE)
 - MATERIALS:
INSULATOR-TEFLON, ASTM-D-1457
GASKET-SILICONE RUBBER, ZZ-R-765
K-GRIP SLEEVE-COMMERCIAL BRONZE, ALLOY 220
C-RING-BER. COP., ASTM-B-196
BODY & COUPLING NUT-STAINLESS STEEL, 303
ALL OTHER METAL PARTS-BRASS, ASTM-B16
 - FINISHES:
CENTER CONTACT-GOLD PLATE PER MIL-G-45204
K-GRIP SLEEVE-KINGS TARNISH RESISTANT FINISH (TR-5)
ALL OTHER METAL PARTS-PASSIVATED PER QQ-P-35
 - ELECTRICAL CHARACTERISTICS:
NOMINAL IMPEDANCE-50 OHMS
FREQUENCY RANGE-DC TO 12.4 GHZ
WORKING VOLTAGE-500 VRMS

REVISIONS

ISSUE	CHANGES
0	ER 34133 KH 10/07/92

JCA3112

SCALE	6:1		
APPROX SURFACE AREA			
WAS:	E-17514		
USED ON			
REF:	BOEING		
PLUG, SMA			
DRAWN	JCA	DATE	09/14/92
DESIGN	JT	DATE	09/14/92
APPR.		DATE	

KINGS
ELECTRONICS CO., INC.
TUCKAHOE, NEW YORK 10707

875-92-3

GSD