

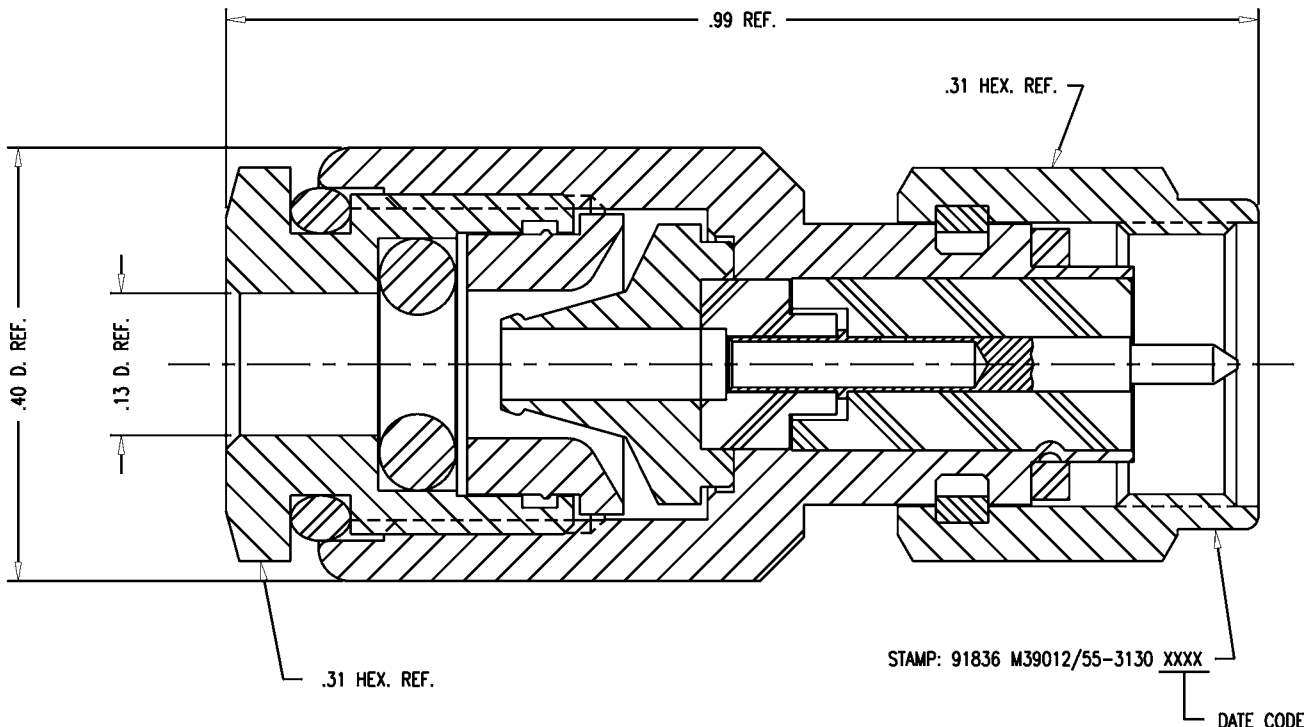
DASH NO.	M CODE	MADE FROM
----------	--------	-----------

GSD

M39012/55-3130

REVISIONS

ISSUE	CHANGES
0	ER 34279 KH 11/30/92
1	CN 35806 E KH 10/11/94
2	CN 35908 E KH 11/28/94
3	CN 37046 A KH 09/06/96



- NOTES:
- FOR USE WITH M17/152-00001 CABLE.
 - FOR CABLING INSTRUCTIONS SEE 3-519.
 - INTERFACE PER MIL-STD-348, FIG. 310-1.
 - MARK PACKAGE: KINGS 875-86-3
 - MATERIALS:
INSULATORS: TEFLON, ASTM-D-1457
GASKETS & O-RING: SIL. RUB., ZZ-R-765
C-RING: BER. COP., ASTM-B-196
CENTER CONTACT: BRASS, ASTM-B16
ALL OTHER PARTS: ST. ST. 303
 - FINISHES:
CENTER CONTACT: HARD GOLD PLT. PER MIL-G-45204
ALL OTHER METAL PARTS: PASSIVATE PER QQ-P-35
 - ELECTRICAL CHARACTERISTICS:
NOMINAL IMPEDANCE: 50 OHMS
VOLTAGE RATING: 355 VRMS
FREQUENCY RANGE: DC TO 12.4 GHz

KAM1195

SCALE	8:1	
APPROX SURFACE AREA	875-86-3	
USED ON		
REF:		
	PLUG, SMA	
DRAWN	KH	DATE 06/10/91
DESIGN	GA	DATE 06/10/91
APPR.		DATE

GSD

KINGS
ELECTRONICS CO., INC.
TUCKAHOE, NEW YORK 10707

M39012/55-3130