

»» Features

- Miniature 25A 250VAC Power Relay.
- UL/CUL, VDE approved.
- With and without quick connect terminals on top.
- Inductive load $\cos \phi = 0.7$, 20A 250VAC, inrush 80A 250VAC, 400ms suitable for compressor load switching and HVAC applications.

»» Type List

| Terminal style | Contact form | Designation |
|------------------------------------|--------------|-------------|
| W (Quick terminal) | SPNO | 852-W-1A-C1 |
| P (PCB terminal) | SPNO | 852-P-1A-C |
| WP (Quick terminal & PCB terminal) | SPNO | 852-WP-1A-C |

»» Ordering Information

852 W - 1A - F - C

1 2 3 4 5

1. 852 -- Basic series designation

2. W -- With quick terminals

P -- With PCB terminals

WP -- With quick and PCB terminals

4. Blank -- Standard type

F -- Class F

5. C -- Dust cover

C1 -- Flanged cover

3. 1A -- Single pole normally open

»» Contact Rating

| | |
|--------------------------------------|-------------------------|
| Resistive load | 25A 250VAC |
| Inductive load ($\cos \phi = 0.7$) | 20A 250VAC (Inrush 80A) |

»» Coil Rating (DC)

| Rated voltage (V) | Rated current $\pm 10\%$ at 23 °C (mA) | Coil resistance $\pm 10\%$ at 23 °C (Ω) | Max. continuous voltage at 70 °C | Pick up voltage(Max) at 23 °C | Drop out voltage(Min) at 23 °C | Power consumption at rated voltage |
|-------------------|--|--|----------------------------------|-------------------------------|--------------------------------|------------------------------------|
| 5 | 180 | 27.8 | 150 % of rated voltage | 75 % of rated voltage | 10 % of rated voltage | approx. 0.9W |
| 6 | 150 | 40 | | | | |
| 9 | 100 | 90 | | | | |
| 12 | 75 | 160 | | | | |
| 24 | 38 | 640 | | | | |
| 48 | 19 | 2560 | | | | |

»» Specification

| | | |
|--------------------------------------|----------------------------|---|
| Contact material | AgSnO alloy | |
| Contact resistance ⁽¹⁾ | 30mΩ Max. | |
| Operate time ⁽¹⁾ | 20ms Max. | |
| Release time ⁽¹⁾ | 10ms Max. | |
| Insulation resistance ⁽¹⁾ | 100MΩ Min. (DC 500V) | |
| Dielectric strength ⁽¹⁾ | Between open contact | : AC 1200V, 50/60Hz 1 min. |
| | Between contact and coil | : AC 3600V, 50/60Hz 1 min. |
| Vibration resistance | Operating extremes | 10~50Hz , amplitude 1.0 mm |
| | Damage limits | 10~50Hz , amplitude 2.0 mm |
| Shock resistance | Operating extremes | 10G |
| | Damage limits | 100G |
| Life expectancy | Mechanical | 10,000,000 operations (frequency 18,000 operations/hr) |
| | Electrical | 100,000 operations (frequency 1,200 operations/hr) |
| Operating ambient temperature | -25 ~ +70 °C (no freezing) | |
| Weight | Approx. 31.5g | |

Note : (1) initial value

»» Safety Approval

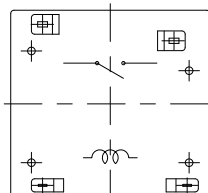
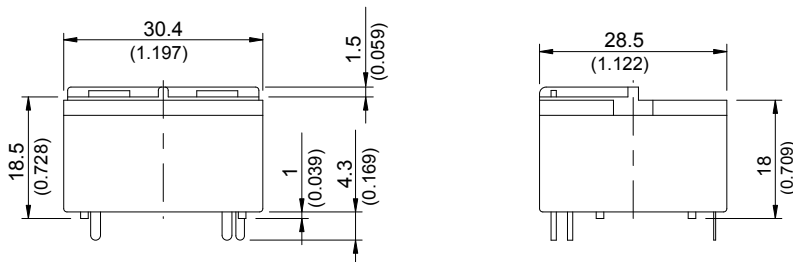
| Certified | UL / CUL | VDE |
|-----------|----------|----------|
| File No. | E88991 | 40004735 |

»» Safety Approval Rating

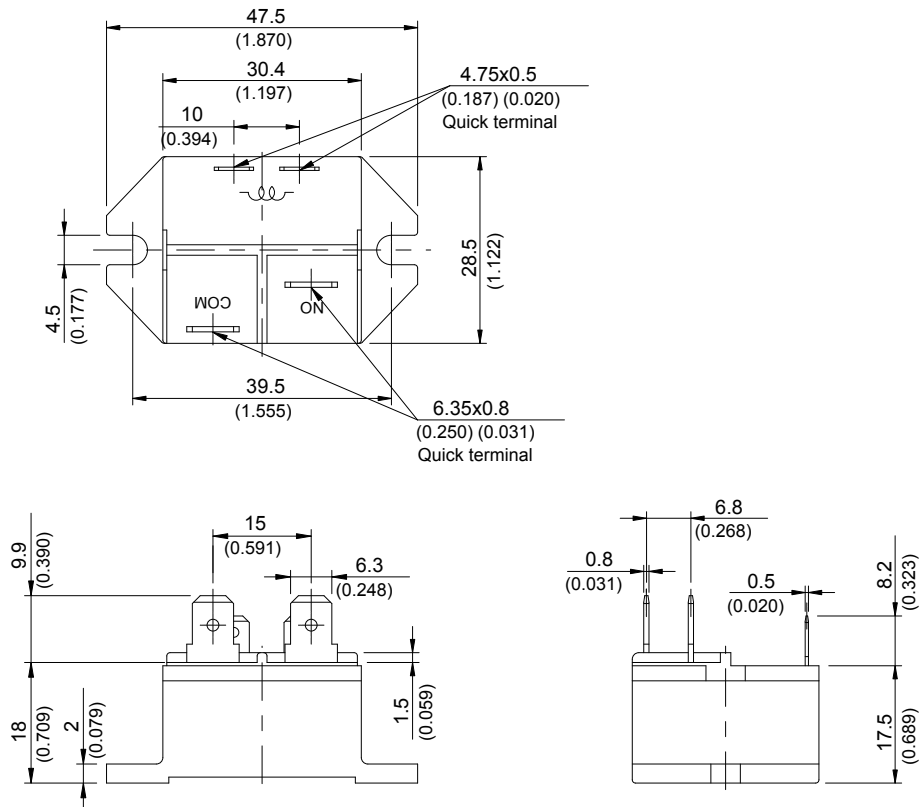
| UL / CUL | VDE |
|---|---------------------------------------|
| 25A 277VAC 1HP 125VAC 1.5HP 250VAC 30A 277VAC (NO) | 25A 250VAC T85 20A 250VAC cosφ 0.7 |

»» Outline Dimensions

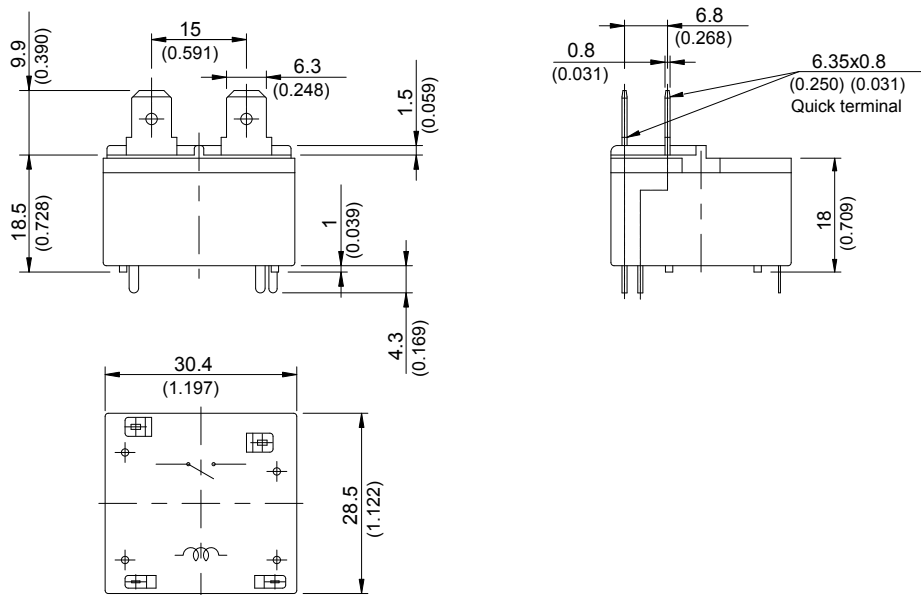
◆852-P



◆ 852-W

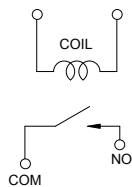


◆ 852-WP

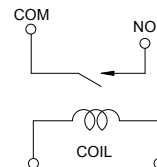


»» Wiring Diagram
BOTTOM VIEW

◆ 852-W

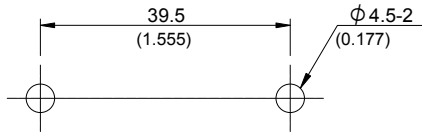


◆ 852-P/WP

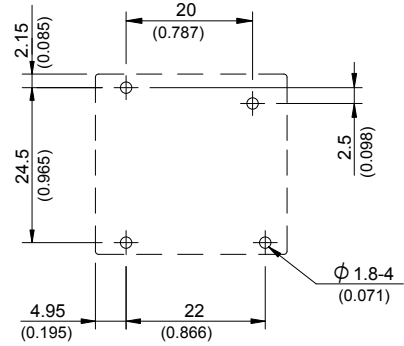


»» PC Board Layout BOTTOM VIEW

◆ 852-W



◆ 852-P/WP



»» Engineering Data

