

AC CONNECTORS

DEAD FRONT GROUNDING CAP



UL Listed &
CSA Approved
No. 8515P

UL and CSA Approved. This three-prong AC plug can take wires up to #12. Removable insert used for thinner wire. Steel armor clad. New dead front design completely encloses the housing, eliminating need for insulator and insuring against accidental short circuit.

ARMORED GROUNDING CONNECTOR

3-Contact AC Female Receptacle with Removable Cord Clamp



This yellow vinyl connector mates with our No. 8515P dead front grounding cap. It takes 3 #12 wires. Each circuit is separated by vinyl divider. Uses heavy duty, double wipes contacts. **UL Listed and CSA Approved.**

No. 8515J

RUBBER AC 3 WIRE PLUG



UL Listed &
CSA Approved

No. 8520

For .225" - .600" cord rubber plugs and female receptacles resist chemical and petroleum by-products. Have low temperature flexibility and resist high heat.

3 WIRE FEMALE CONNECTOR



UL Listed &
CSA Approved

No. 8525

For .225" - .600 cord.

JIFFY PLUG



No. 8901

No tools, no stripping. Perfect contact in 5 seconds. Cords extends from side of plug.

Non Polarized. Color: White

AC RUBBER ATTACHMENT PLUG



No. 6092S

With brass plated steel spring prongs. 15 Amps-125 Volts. Cord hole .450". Sturdy in construction. Can be used for heavy duty work, as well as for regular cord sets.

BAKELITE FLAT GRIP CAP



No. 1051B - Brown
No. 1051V - Ivory
10A-250V
15A-125V
UL Approved
Non Polarized Plug

PARALLEL GROUNDING ADAPTOR



No. 8419

Convert three-prong to two-prong caps. Polarized blades and rigid grounding lug. Compact design extends only 1" from socket.

VINYL CUBE TAP



No. 8400

Heavy-duty, durable brown cube tap. One-piece construction. Brass spring prongs. Rated: 15A - 125V

Hospital Grade AC PLUG and CONNECTOR

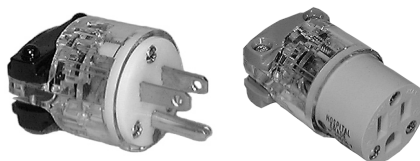


Figure 1

15A 125V
NEMA 5-15

Figure 2

A.C. power connectors meeting all federal specifications for hospital use, as required by the National Electric Code (article 517). Verified by UL to latest federal specifications. Both devices feature terminals separated by insulating barriers, captive speed-screws assembly and integral strain relief. Both accommodate cords with an O.D. from .250" to .685". The connector configuration is NEMA 5-15 and rated at 15 amps at 125 volts AC.

fig. 1 No. 8266 - male plug
fig. 2 No. 8269 - connector

OFFICE EQUIPMENT AC CONVERTER (IEC STANDARD)



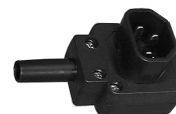
No. 8522



No. 8922



No. 8523



No. 8923



No. 8527



No. 8529



Three prong power cord connector (like industry type IEC320-13) used on nearly all personal computers, printers, copy machines and other office equipment.

No. 8522 In-Line Female (Rated 10A @ 250VAC)

No. 8922 - Right Angle In-Line Female (Rated 10 @ 250 VAC)

No. 8523 In-Line Male (Rated 10A @ 250VAC)

No. 8923 - Right Angle In-Line Male (Rated 10A @ 250 VAC)

No. 8527 Panel Mount Male, Snap-In Type. (Rated 15A @ 250VAC)

No. 8529 Panel Mount Male, Screw Mt. Type (Rated 15A @ 250VAC)

TRIPLE GROUNDING TAP



No. 8147V Ivory
No. 8147B Brown

Accepts 3 standard grounding plugs into a single grounding outlet. Ample room even for right angle type plug.

Size of bakelite case: 3" x 1-3/32" x 1" deep.