



### »» Features

- Miniature PCB Relays.
- 10A/120VAC, 5A/240VAC ratings.
- Special pinning layout with high dielectric strength 2000V between contact & coil.
- UL/CUL approval.

### »» Type List

Terminal style	Contact form	Designation		
		Flux tight	Sealed type	Sealed type washable
PCB terminal	1A (SPNO)	843-1A-C	843-1A-V	843-1A-S
	1B (SPNC)	843-1B-C	843-1B-V	843-1B-S
	1C (SPDT)	843-1C-C	843-1C-V	843-1C-S

### »» Ordering Information

843 - 1A - C  
1        2        3

- |                                    |                           |
|------------------------------------|---------------------------|
| 1. 843 -- Basic series designation | 3. C -- Flux tight        |
|                                    | V -- Sealed type          |
| 2. 1A -- Single pole normally open | S -- Sealed type washable |
| 1B -- Single pole normally closed  |                           |
| 1C -- Single pole double throw     |                           |

### »» Contact Rating

Resistive load	10A 120VAC , 10A 24VDC , 5A 240VAC
----------------	------------------------------------

### »» Coil Rating (DC)

Rated voltage (V)	Rated current ±10 % at 23 °C (mA)	Coil resistance ±10 % at 23 °C (Ω)	Max. continuous voltage at 70 °C	Pick up voltage(Max) at 23 °C	Drop out voltage(Min) at 23 °C	Power consumption at rated voltage
3	150	20	150 % of rated voltage	75 % of rated voltage	10 % of rated voltage	approx. 0.45W
5	90	56				
6	75	80				
9	50	180				
12	37.5	320				
18	25	720				
24	18.8	1280				

## »» Specification

Contact material	AgSnO alloy	
Contact resistance <sup>(1)</sup>	100mΩ Max.	
Operate time <sup>(1)</sup>	10ms Max.	
Release time <sup>(1)</sup>	5ms Max.	
Insulation resistance <sup>(1)</sup>	100MΩ Min. (DC 500V)	
Dielectric strength <sup>(1)</sup>	Between open contact	: AC 750V , 50/60Hz 1 min.
	Between contact and coil	: AC 2000V , 50/60Hz 1 min.
Vibration resistance	Operating extremes	10~50Hz , amplitude 1.5 mm
	Damage limits	10~50Hz , amplitude 1.5 mm
Shock resistance	Operating extremes	10G
	Damage limits	100G
Life expectancy	Mechanical	20,000,000 operations (frequency 18,000 operations/hr)
	Electrical	100,000 operations (frequency 1,800 operations/hr)
Operating ambient temperature	-30~+70 °C	
Weight	Approx. 10 g	

Note : (1) initial value

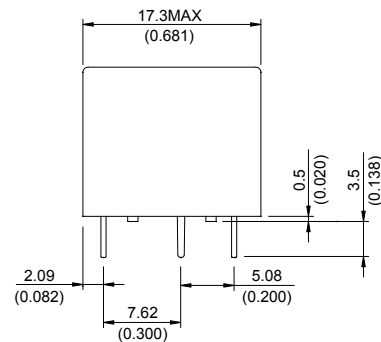
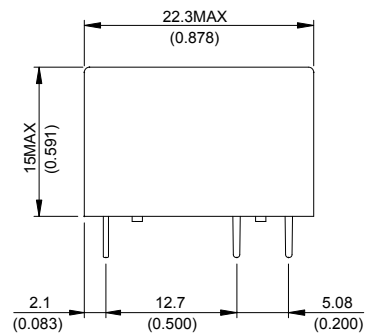
## »» Safety Approval

Certified	UL / CUL
File No.	E88991

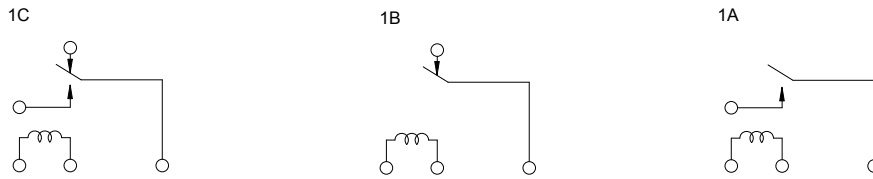
## »» Safety Approval Rating

UL / CUL
10A 120VAC/24VDC , 5A 240VAC

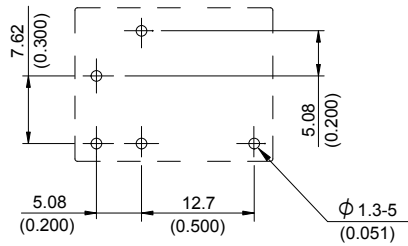
## »» Outline Dimensions



## »» Wiring Diagram BOTTOM VIEW



## »» PC Board Layout BOTTOM VIEW



## »» Engineering Data

