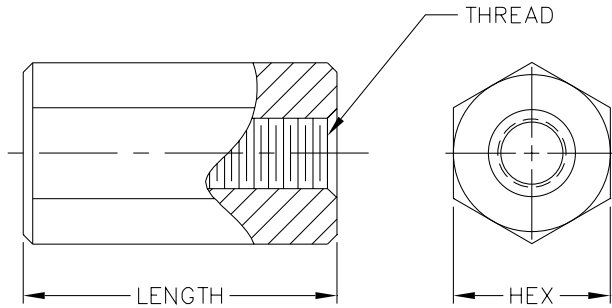


Aluminum Hex Standoffs



- Aluminum with clear chromate finish.
- Hex shape for wrench tightening.

*Please see page 40 for more information on aluminum standoffs and finishes.

Maximum Thread Depth				
Thread Size	4-40	6-32	8-32	10-32
Thread Length Tapped Thru	1"	1"	1"	1"
Thread Length Tap each end	1/4"	7/16"	7/16"	1/2"

LENGTH		O.D.	THREAD			
			#4-40	#6-32	#8-32	#10-32
.125	1/8	1/4	8400	8420	8440	
		5/16		9403A	9404A	8460
		3/8			9405A	9406A
.187	3/16	1/4	9284	9291	9298	
		5/16		9403B	9404B	9035
		3/8			9405B	9406B
.250	1/4	1/4	8401	8421	8441	
		5/16		9403C	9404C	8461
		3/8			9405C	9406C
.312	5/16	1/4	9285	9292	9299	
		5/16		9403D	9404D	9306
		3/8			9405D	9406D
.375	3/8	1/4	8402	8422	8442	
		5/16		9403E	9404E	8462
		3/8			9405E	9406E
.437	7/16	1/4	9286	9293	9300	
		5/16		9403F	9404F	9307
		3/8			9405F	9406F
.500	1/2	1/4	8403	8423	8443	
		5/16		9403G	9404G	8463
		3/8			9405G	9406G
.562	9/16	1/4	9287	9294	9301	
		5/16		9403H	9404H	9308
		3/8			9405H	9406H
.625	5/8	1/4	8404	8424	8444	
		5/16		9403J	9404J	8464
		3/8			9405J	8406J
.687	11/16	1/4	9288	9295	9302	
		5/16		9403K	9404K	9309
		3/8			9405K	9406K
.750	3/4	1/4	8405	8425	8445	
		5/16		9403L	9404L	8465
		3/8			9405L	9406L

LENGTH		O.D.	THREAD					
			#4-40	#6-32	#8-32	#10-32		
.812	13/16	1/4	9289	9296	9303			
		5/16		9403M	9404M	9310		
		3/8			9405M	9406M		
.875	7/8	1/4	8406	8426	8446			
		5/16		9403N	9404N	8466		
		3/8			9405N	9406N		
.937	15/16	1/4	9290	9297	9304			
		5/16		9403P	9404P	9311		
		3/8			9405P	9506P		
1.000	1	1/4	8407	8427	8447			
		5/16		9403Q	9404Q	8467		
		3/8			9405Q	9406Q		
1.250	1-1/4	1/4	8408	8428	8448			
		5/16		9403R	9404R	8468		
		3/8			9405R	9406R		
1.375	1-3/8	1/4	8400T	8420T	8440T			
		5/16		9403T	9404T	8460T		
		3/8			9405T	9406T		
1.500	1-1/2	1/4	8409	8429	8449			
		5/16		9403U	9404U	8469		
		3/8			9405U	9406U		
1.625	1-5/8	1/4	8400V	8420V	8440V			
		5/16		9403V	9404V	8460V		
		3/8			9405V	9406V		
1.750	1-3/4	1/4	8410	8430	8450			
		5/16		9403W	9404W	8470		
		3/8			9405W	9406W		
1.875	1-7/8	1/4	8400X	8420X	8440X			
		5/16		9403X	9404X	8460X		
		3/8			9405X	9406X		
2.000	2	1/4	8411	8431	8451			
		5/16		9403Y	9404Y	8471		
		3/8			9405Y	9406Y		
2.250	2-1/4	1/4	8400ZA	8420ZA	8440ZA			
			8412	8432	8452			
			8400ZC	8420ZC	8440ZC			
			8413	8433	8453			
			8400ZE	8420ZE	8440ZE			
			8414	8434	8454			
			8400ZG	8420ZG	8440ZG			
			8415	8435	8455			
			2.500	2-1/2				
			2.750	2-3/4				
			3.000	3				
			3.250	3-3/4				
3.500	3-1/2							
3.750	3-3/4							
4.000	4							