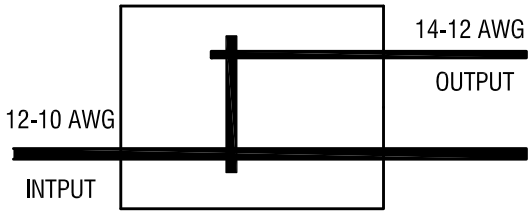
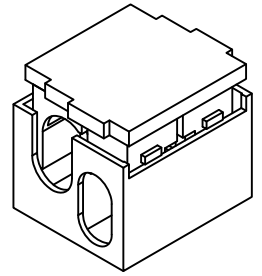


THIS DOCUMENT IS THE PROPERTY OF
KEYSTONE ELECTRONICS CORP. AND
SHALL NOT BE REPRODUCED, DISTRIBUTED
OR USED AS A BASIS FOR MANUFACTURE
WITHOUT PRIOR WRITTEN PERMISSION
FROM KEYSTONE ELECTRONICS CORP.

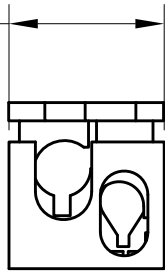
SCHEMATIC



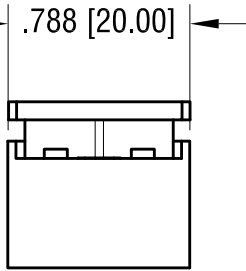
ACTUAL SIZE:



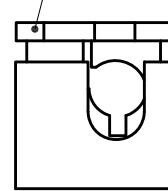
.670 [17.00]



.788 [20.00]



COLOR CODE:
ORANGE



*.550 [14.00]

NOTE:

1. INSULATION: MAT'L- POLYCARBONATE, LEXAN UL 94V-0
2. CONTACT: MAT'L- COPPER ALLOY
FINISH- TIN PLATE, OVER NICKEL PLATE
3. FOR WIRE: SOLID WIRE
WIRE SIZE: 12 AWG MIN. - 10 AWG MAX., INPUT
14 AWG MIN. - 12 AWG MAX., OUTPUT
4. RATED VOLTAGE 250V
RATED CURRENT: 20A

* HEIGHT OF CLOSED CONNECTOR

KEYSTONE ELECTRONICS CORP.

www.keyelco.com • ASTORIA, N.Y. 11105-2017 • Tel (718) 956-8900

PART NAME

"T" SERIES, i WIRE CONNECTOR

MATERIAL

AS NOTED

FINISH

AS NOTED

DRN BY

NT

DATE

9.08.16

APP'D

LN

SCALE

1.2X

TOLERANCES

INCH

[MM]

CODE

DWG NO.

DECIMAL

± .010 [± 0.25]

C

ANGULAR

± 1°

UNLESS OTHERWISE SPECIFIED

8382

DATE

DESCRIPTION

REV.