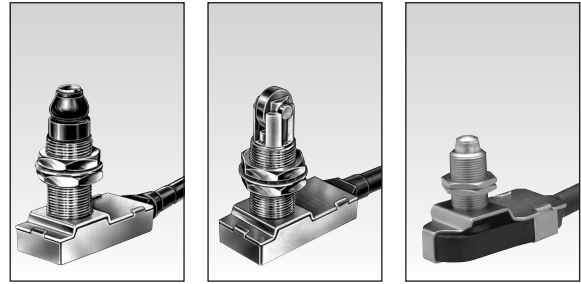


# Automotive Limit Switches Series 83 731/ 83 732 / 83 733



1

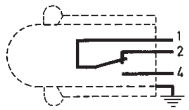
**Conform to the following standards :**  
IEC 356.1 - EN 60204.1  
NFC 20030 : Class I - 83 731 - 83 732  
Class III - 83 733

**Degree of protection :**  
IP 56 - IP 66 depending on type

**Version :** 1 pole

**Function :** 3-terminal single break two-way contact element (form C: inverter).

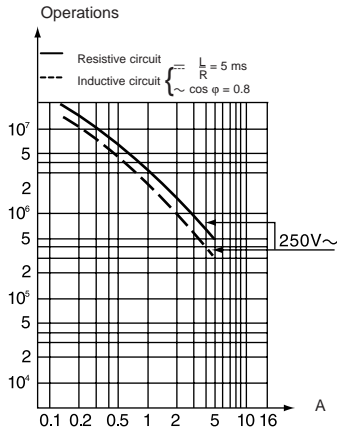
**Principle :**



**Electrical characteristics :**

Assigned operating current (Ie)  
83 731 - 83 732 : 5 A 250 V  
83 733 : 5 A 50 V  
Thermal rating (Ith) : 12 A

**Operating curve :**



**Connections :**

PVC cable (A05 - VV - F) 0.50 m long  
3 conductors cross-section 0.75 mm<sup>2</sup>  
Sheathed, ext. Ø : 7.6 mm  
Core connections : 1 : black (common)  
2 : brown (NC)  
4 : blue (NO)

**Electrical protection :**

Earthing terminal for version 83 731 and 83 732.

**Approvals :**

CSA A300.

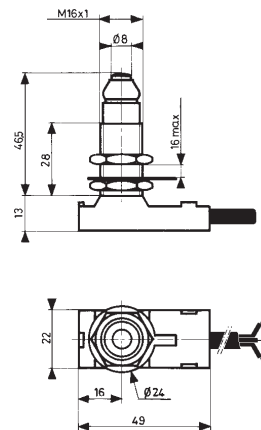
## Types

|                                   |            | 83 731 3        | 83 732 3        | 83 733 3        |
|-----------------------------------|------------|-----------------|-----------------|-----------------|
| <b>Control mechanisms</b>         |            |                 |                 |                 |
| Top-mounted plunger               |            | •               |                 | •               |
| Top-mounted plunger with roller   |            |                 | •               |                 |
| <b>Mechanical characteristics</b> |            |                 |                 |                 |
| Minimum operating force           | N (oz.)    | 15 (53)         | 15 (53)         | 6 (21.2)        |
| Minimum total travel force        | N (oz.)    | 35 (123.4)      | 35 (123.4)      | 25 (88.2)       |
| Minimum operating travel          | mm (in.)   | 2 (.079)        | 2 (.079)        | 1.5 (.059)      |
| Differential travel               | mm (in.)   | 0.2 (.008)      | 0.2 (.008)      | 0.2 (.008)      |
| Max. total travel                 | mm (in.)   | 6 (.236)        | 6 (.236)        | 4 (.157)        |
| Mechanical life                   | Operations | 10 <sup>6</sup> | 10 <sup>6</sup> | 10 <sup>6</sup> |
| Temperature limits                | °C (°F)    | - 5 + 70        | - 5 + 70        | - 5 + 70        |
| Degree of protection              | °C (°F)    | IP 66           | IP 66           | IP 56           |
| Weight                            | g (oz.)    | 110 (3.9)       | 110 (3.9)       | 70 (2.5)        |

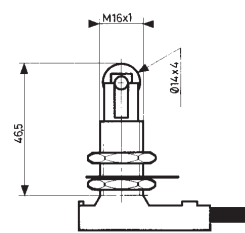
## Dimensions

mm

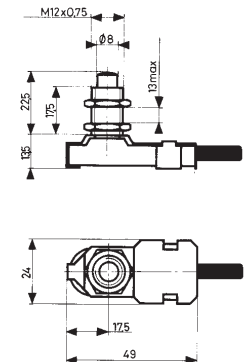
83 731 3



83 732 3



83 733 3



## Other information

For other versions, functions and special contacts or special modes of operation : please consult us.

## To order, specify :

| 1/2 meter cable | 1 meter cable | 2 meter cable |
|-----------------|---------------|---------------|
| 83731316        | 83731319      | 83731310      |
| 83732323        | 83732315      | 83732327      |
| 83733315        | 83733314      | 83733310      |

Standard products, non stocked

1 Type

Example : Limit switch - 83 731 319

Products and specifications subject to change without notice.

Order/Technical Support – Tel: (800) 677-5311 / FAX: (800) 677-3865 / www.crouzet-usa.com