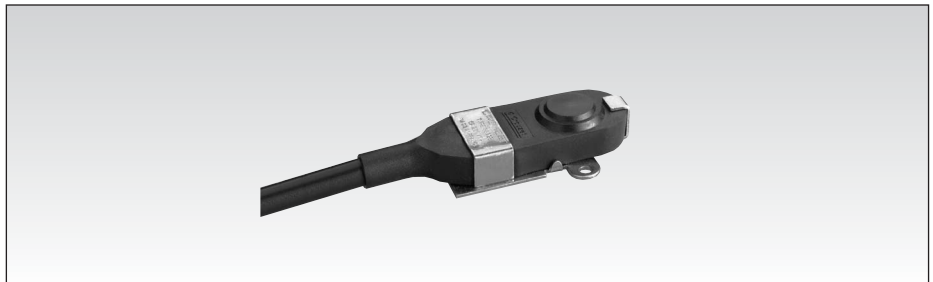


Sealed Flat Pack Switches Series 83 123 IP 66



General specifications Layout

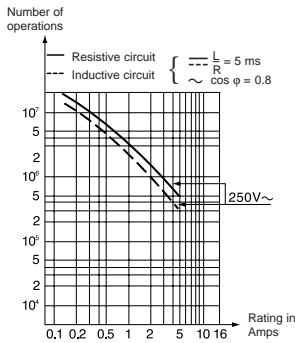


Components

Material

- Casing : nitrile
- Contacts : silver
- Contact holder : polyamide
- Mounting plate : passivated mild steel (zinc)

Operating curve



Degree of protection IP 66

Mounting - Operation

In order to comply with basic safety requirements, an insulator must be used if the device is being operated manually. One of the fixing holes must be used as a protective earth.

Types

Features		83 123 0 Standard	83 123 0 Raised Button
Electrical characteristics			
Current rating at 250 V	Nominal	5	5
	Thermal	12	12
Mechanical characteristics			
Operating force - max.	N (oz)	5.3 (18.7)	5.3 (18.7)
Release force - min.	N (oz)	1.5 (5.3)	1.5 (5.3)
Total travel force - max.	N (oz)	8 (28.2)	8 (28.2)
Permitted overtravel force - max.	N (oz)	30 (106)	30 (106)
Tripping point	mm (in)	11.4 ^{+0.4} (.45 ^{+0.016})	17.4 ^{+0.5} (.68 ^{+0.016})
Differential travel	mm (in)	0.2 (.008)	0.2 (.008)
Overtravel - min.	mm (in)	0.2 (.008)	0.2 (.008)
Maximum operating temperature	°C (F°)	0+85 (32+185)	0+85 (32+185)
Mechanical durability	Operations	2 x 10 ⁶	2 x 10 ⁶
Contact gap	mm (in)	0.2 (.008)	0.2 (.008)
Weight	g (oz)	45 (1.6)	50 (1.6)

Contact Type

C (Form C SPDT)

Connections

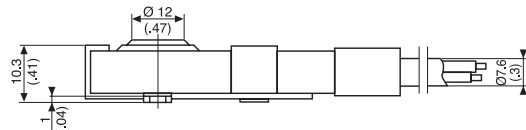
Output by A05 VVF cable , 3 x 0.75 mm² cores in sheath of 7.6 mm ext. Ø.

Standard length 0.50 m

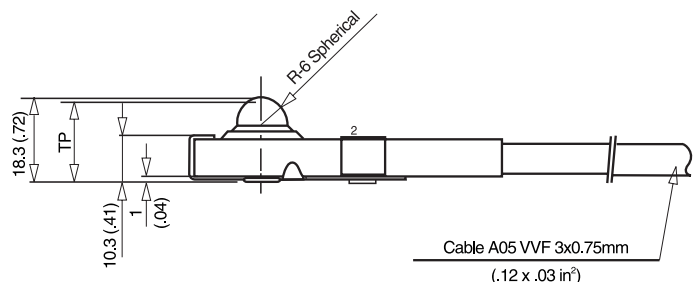
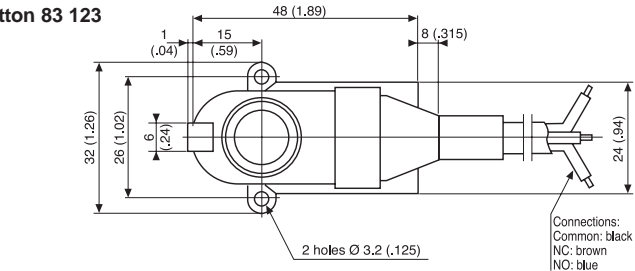
Common (1) : black
Normally closed (2) : brown
Normally open (4) : blue

Dimensions

Standard 83 123



Raised button 83 123



mm (in)

Other information	To order, specify :	
For other cable lengths and temperatures, please consult us.	Standard	Raised Button
	0.5m = 83 123 018	83 123 018.RB
	1.0m = 83 123 015	83 123 015.RB
	2.0m = 83 123 005	83 123 005.RB

Products and specifications subject to change without notice.