



### PowerPad® Jr. Model 8230

Measure and carry out diagnostic work and power quality work on single- or three-phase balanced load networks

#### SPECIFICATIONS

MODEL	8230
<b>ELECTRICAL</b>	
<b>Voltage (TRMS)</b>	Phase-to-Phase: 660V; Phase-to-Neutral: 600V
<b>Current (TRMS)</b>	MN Clamp: 5mA to 6A/120A or 2 to 240A MR Clamp: 10 to 1000Aac, 10 to 1400Aac SR Clamp: 3 to 1200A MiniFlex®: 10 to 1000A AmpFlex®: 10 to 6500A <sup>(1)</sup>
<b>Frequency (Hz)</b>	40 to 70Hz
<b>Other Measurements</b>	kW, kVAR, PF, DPF, kWh, kVARh, kVAh, K-Factor, Flicker, Harmonic Phase Shift, Phase Rotation
<b>Harmonics</b>	THD-R, THD-F, V, A, VA, 1 <sup>st</sup> to 50 <sup>th</sup> , Direction, Sequence
<b>Sampling Frequency</b>	256 samples/cycle
<b>Data Storage</b>	1.5MB partitioned for waveforms, alarms and trend recording
<b>Power Source</b>	NiMH rechargeable battery pack (included) AC Supply: 120/230VAc (50/60Hz)
<b>Battery Life</b>	≥8 hrs with display on ≥40 hrs with display off (recording mode)
<b>MECHANICAL</b>	
<b>Communication Port</b>	Optically isolated USB
<b>Display</b>	¼ VGA (320 x 240) color LCD digital & graphical display with adjustable brightness & contrast
<b>Dimensions</b>	8.3 x 4.3 x 2.4" (211 x 108 x 60mm)
<b>Weight</b>	1.9 lbs (0.88kg)
<b>Safety Rating</b>	EN 61010, 600V CAT III, IP54, Pollution Degree 2

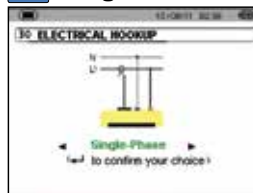
<sup>(1)</sup>Crest factor at 6500 = 1



#### FEATURES

- Measures up to 660Vrms or Vdc
- Measures up to 6500Aac or 1400Aac (probe dependent)
- Displays Min, Max and Average Volts and Amps, Crest Factor, Peak value and K-Factor
- Calculates and displays Watts, VARs and VA, Power Factor and Displacement Power Factor for single-phase and balanced three-phase
- Measures and records power systems (kW, VA, kVAR)
- Energy metering (kAh, VARh, kWh)
- Displays total harmonic distortion (THD-F and THD-R) for voltage and current
- Displays individual harmonic values and % for Volts and Amps through the 50<sup>th</sup> harmonic
- Captures, displays and stores inrush current waveforms and statistics
- Stores up to eight screen captures
- Stores up to 1MB of trend recorded data
- Configurable from DataView® software or front panel
- Download stored data to DataView® software via optical USB port (included)
- Captures up to 4096 alarm events from up to 10 different thresholds
- Displays and records up to 17 different power quality parameters
- Includes FREE DataView® software for configuring data storage, real-time waveform display, analysis and report generation
- The Max and Min RMS measurements are calculated every half-period

#### Configuration



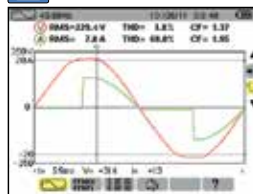
#### Recording Setup



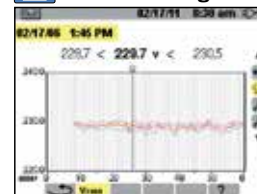
#### Inrush Mode



#### Waveform Mode



#### Trend Recording



#### Harmonics Mode



CATALOG NO.	DESCRIPTION
2130.81	PowerPad® Jr. Model 8230 (no probes)
2130.82	PowerPad® Jr. Model 8230 w/MN193-BK
2130.83	PowerPad® Jr. Model 8230 w/SR193-BK
2130.84	PowerPad® Jr. Model 8230 w/24" 193-24-BK (AmpFlex®)
2130.87	PowerPad® Jr. Model 8230 w/MN193-BK
2130.88	PowerPad® Jr. Model 8230 w/MA193-10-BK

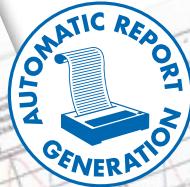


# DataView®

## Data Analysis and Reporting Software for Power Quality Meters



### Configure all functions of the Power Quality Meters

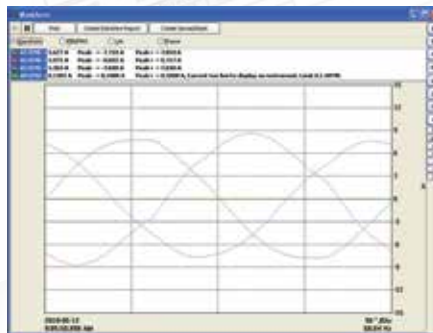


- Display and analyze real-time data on your PC
- Configure functions and parameters from your PC
- Customize views, templates and reports to your exact needs
- Create and store a complete library of configurations that can be uploaded as needed
- Zoom in and out and pan through sections of the graph to analyze the data
- Download, display and analyze recorded data
- Display waveforms, trend graphs, harmonic spectrums, text summaries, transients, event logs and stored alarms
- Print reports using standard or custom templates you design
- Free updates are available on our website [www.aemc.com](http://www.aemc.com)

### Typical DataView® Functional, Digital & Graphical Displays



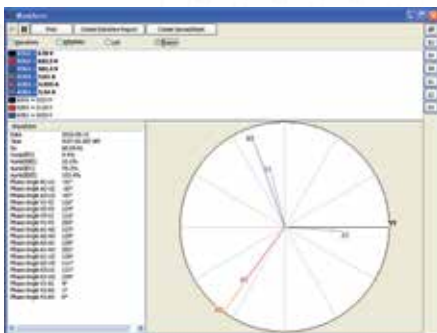
Clear and easy setup of all functions from one tabbed dialog box.



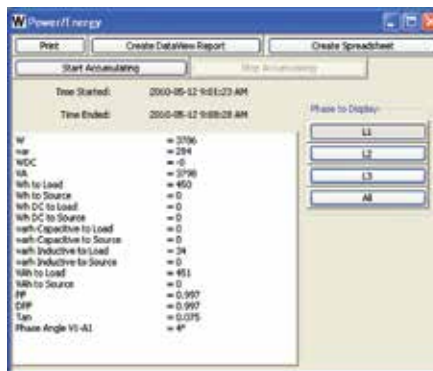
Display real-time waveforms by phase, parameter or total.



Display all harmonics from 1<sup>st</sup> to 50<sup>th</sup> in bargraph form for voltage, current and power.



Display real-time Phasor diagrams. Includes unbalance for both voltage and current.



Display power and energy parameters – both instantaneous and total.

Harmonic	Voltage	Current	Power
0 (DC)			
1			
2			
3			
4			
5			
6			
7			
8			
9			
10			
11			
12			
13			
14			
15			
16			
17			
18			
19			
20			
21			
22			
23			
24			
25			
26			
27			
28			
29			
30			
31			
32			
33			
34			
35			
36			
37			
38			
39			
40			
41			
42			
43			
44			
45			
46			
47			
48			
49			
50			

Display harmonics in a text table from harmonic 0 (DC) through the 50<sup>th</sup>.