



Crydom

81512201

See full Datasheet below...

onlinecomponents.com

THE ONLINE DISTRIBUTOR OF ELECTRONIC COMPONENTS

BUY NOW



MASTERTM
ELECTRONICS

BUY NOW

masterelectronics.com & onlinecomponents.com
are **authorized** e-commerce distributors
of electronic components.



"Sensitive" position detectors with ball Part number 81512201

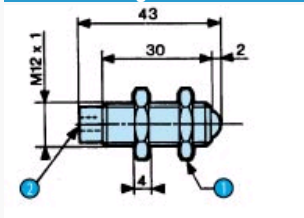


■ xxx

Symbol

Push-in connection for semi-rigid tubing (NFE 49100) mm	Ø 4
Endurance at 6 bar operations	10 ⁷
Actuation force at 6 bars N	0,8
Fluid used: that delivered by the leak sensor relay.	■
Operating temperature (°C)	-5 +50
Weight (g)	24,5

Dimension Diagram : 81 512 201



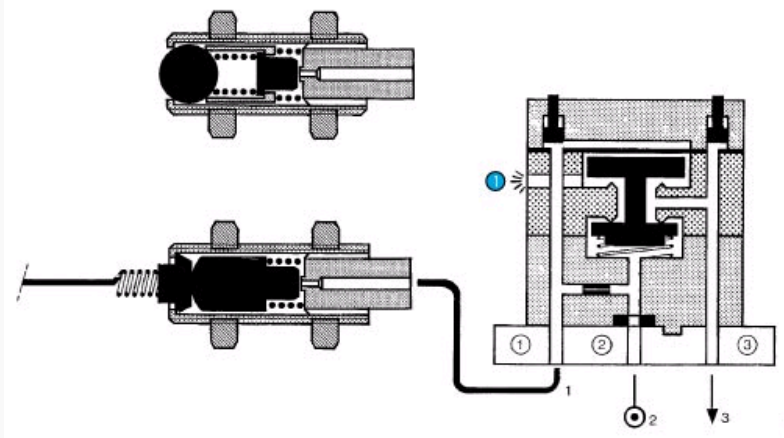
N°	Legend
1	Connector Ø 4
2	17 mm Across flat

: AA SIGLE



Supplied at industrial pressure, the relay produces a permanent bleed at its input port.
A sensor shutting off this bleed causes the relay to switch.

: 81 502 435



Supplied at industrial pressure, the relay produces a permanent bleed at its input port.
A sensor shutting off this bleed causes the relay to switch.

N°	Legend
1	Exhaust

onlinecomponents.com