



# Crydom

## 81283510

*See full Datasheet below...*

**onlinecomponents.com**

THE ONLINE DISTRIBUTOR OF ELECTRONIC COMPONENTS

**BUY NOW**



**MASTER**<sup>TM</sup>  
ELECTRONICS

**BUY NOW**

masterelectronics.com & onlinecomponents.com  
are **authorized** e-commerce distributors  
of electronic components.



"Microvalve" series position detectors Rear connection by screw Part number 81283510

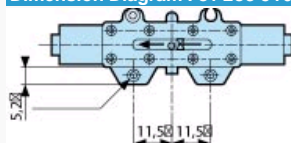


• XXX

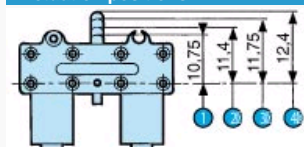
Symbol NO

Symbol NC	
Operating pressure (bar)	2→8
Orifice diameter mm	
Flow at 6 bars NI/min	138
Operating force at 6 bars (N)	-
Effective travel	1
Push-in connection for semi-rigid tubing (NFE 49100) mm	Ø 4
Operating temperature (° C)	-5 +50
Mechanical life (operations)	5.10 <sup>6</sup>
Weight (g)	20

Dimension Diagram : 81 283 510

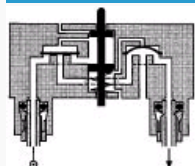


: Actuation positions:



N°	Legend
1	PFC: End of travel position
2	Operating position (max output kV)
3	Release position (max. exhaust kV)
4	PR: Rest position

: NF



: NO

