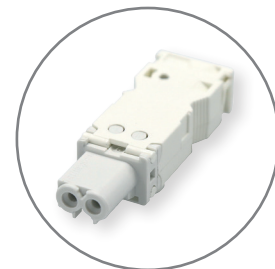


7L Series New LED Panel Light

NEW



Design by MINELLI | FOSSATI



Connector included

Finder's new LED light for electrical panels - with magnetic mount

- "Two in One" mount - direct magnetic mount or through a screw-mounted metallic bracket
- Brightness levels: 600 or 1200 lumens
- Versions with: direct switching, ON/OFF switch, or motion detector
- Power supply - Multi-voltage: 12...48 V AC/DC and 110...240 V AC/DC
- New design

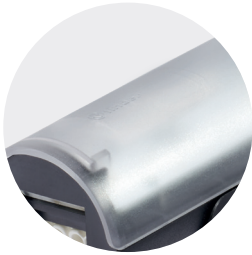
Approvals



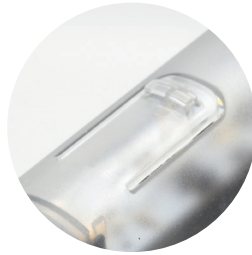
Type 7L.43 (600 lumens)
Type 7L.46 (1200 lumens)

- Direct magnetic mount or through a screw-mounted metallic bracket
- Power supply: 12...48 V AC/DC and 110...240 V AC/DC
- Nominal power consumption: 6 W (600 lm), 9 W (1200 lm)
- Radiation angle: 120°
- Light color: 5,000 K
- Protection category: IP20

Switching without ON/OFF switch or motion detector



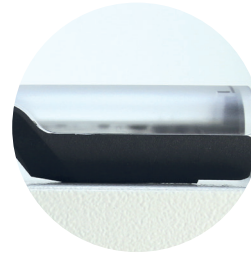
Switching via ON/OFF switch



Switching via motion detector



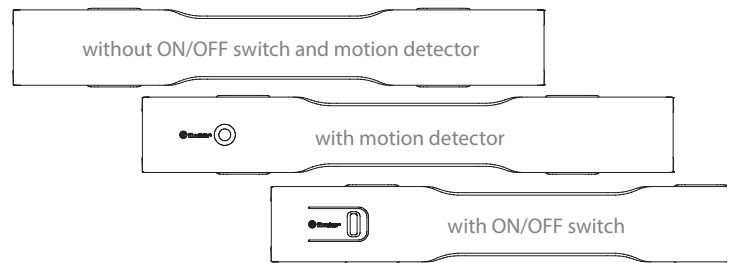
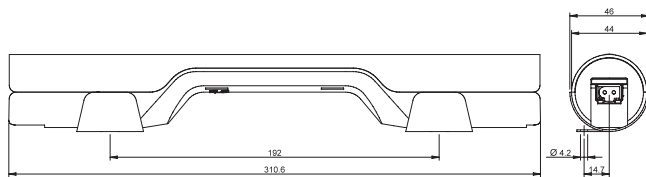
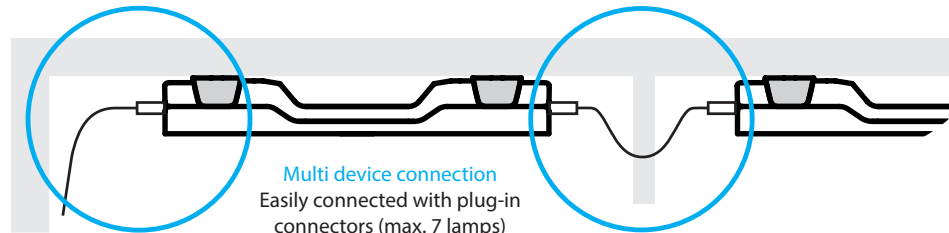
Magnetic mount directly to metallic panel



Magnetic mount via screw-mounted metallic bracket



Quick and simple wiring system via **push-in connectors** for the connection to a single unit, or via **plug-in connectors** for the connection to a single or multiple units.



STOCK ITEMS

Part Number	Lumen	Supply voltage	Switching	Connections
7L.43.0.024.0100	600	12...48 V AC/DC	Without ON/OFF switch and PIR - motion detector	Push-in connection
7L.43.0.024.0200	600	12...48 V AC/DC	Without ON/OFF switch and PIR - motion detector	Plug-in connection
7L.43.0.230.0100	600	110...240 V AC/DC	Without ON/OFF switch and PIR - motion detector	Push-in connection
7L.43.0.230.0200	600	110...240 V AC/DC	Without ON/OFF switch and PIR - motion detector	Plug-in connection
7L.43.0.024.1100	600	12...48 V AC/DC	ON/OFF switch	Push-in connection
7L.43.0.024.1200	600	12...48 V AC/DC	ON/OFF switch	Plug-in connection
7L.43.0.024.2100	600	12...48 V AC/DC	PIR - motion detector	Push-in connection
7L.43.0.024.2200	600	12...48 V AC/DC	PIR - motion detector	Plug-in connection
7L.43.0.230.1100	600	110...240 V AC/DC	ON/OFF switch	Push-in connection
7L.43.0.230.1200	600	110...240 V AC/DC	ON/OFF switch	Plug-in connection
7L.43.0.230.2100	600	110...240 V AC/DC	PIR - motion detector	Push-in connection
7L.43.0.230.2200	600	110...240 V AC/DC	PIR - motion detector	Plug-in connection
7L.46.0.024.1100	1200	12...48 V AC/DC	ON/OFF switch	Push-in connection
7L.46.0.024.1200	1200	12...48 V AC/DC	ON/OFF switch	Plug-in connection
7L.46.0.024.2100	1200	12...48 V AC/DC	PIR - motion detector	Push-in connection
7L.46.0.024.2200	1200	12...48 V AC/DC	PIR - motion detector	Plug-in connection
7L.46.0.230.1100	1200	110...240 V AC/DC	ON/OFF switch	Push-in connection
7L.46.0.230.1200	1200	110...240 V AC/DC	ON/OFF switch	Plug-in connection
7L.46.0.230.2100	1200	110...240 V AC/DC	PIR - motion detector	Push-in connection
7L.46.0.230.2200	1200	110...240 V AC/DC	PIR - motion detector	Plug-in connection
07L.12	—	—	Male connector	—