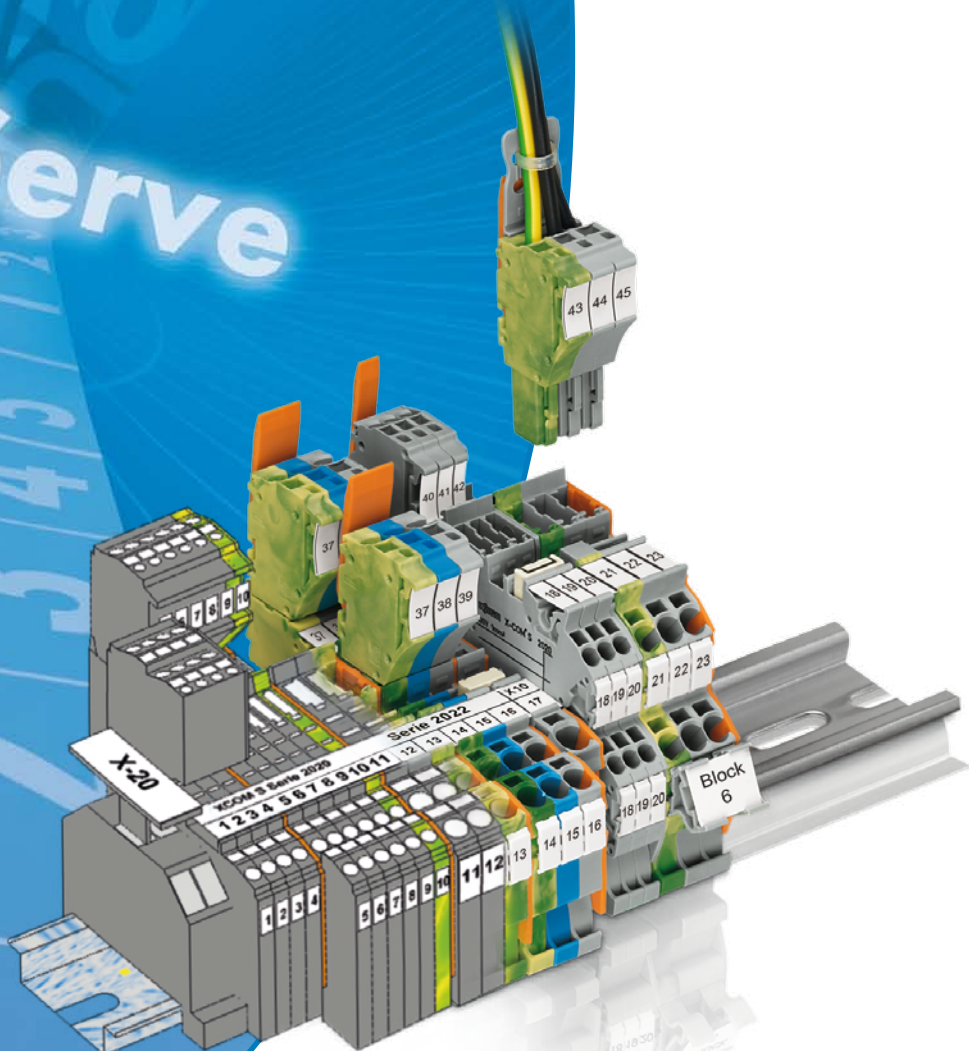


WAGO ProServe®

Designing, Assembling and Marking

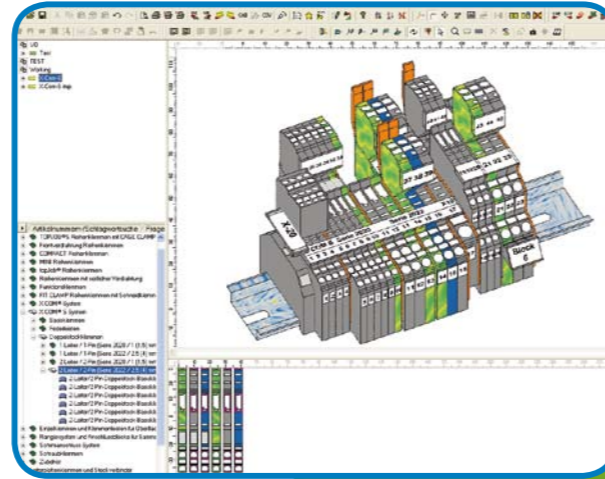
ProServe



WAGO®
INNOVATIVE CONNECTIONS

Benefits:

- Quick design
- Quick ordering
- User-friendly
- Extensive and user-specific documentation
- Network compatibility
- Different software products on a single CD (smartDESIGNER, productLOCATOR, smartSCRIPT)
- A price list is included
- ...all for free!**



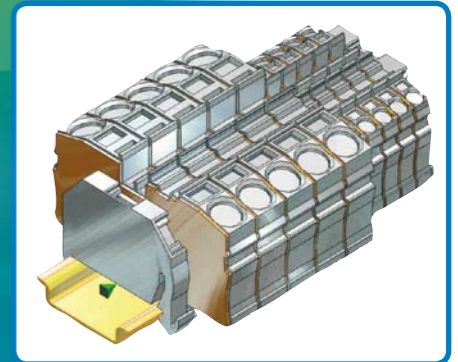
smartDESIGNER and productLOCATOR

- Interfaces to CAE and M-CAD programs
- Output in PDF and HTML
- Different search functions provide quick item selection
- Creation of part lists including product pictures and custom part numbers
- Complex rail assemblies can be easily designed in 3D
- Easy creation of custom part numbers
- Creation of custom items to design third-party products
- Default parts (favorites) can be defined individually, streamlining design time
- Intelligent, user-optimized accuracy check features
- 18 languages available
- 25.000 sales items

Marking:

- Direct creation and output of marking data to plotter or thermal transfer printer

STEP – IGES – DXF – DWG



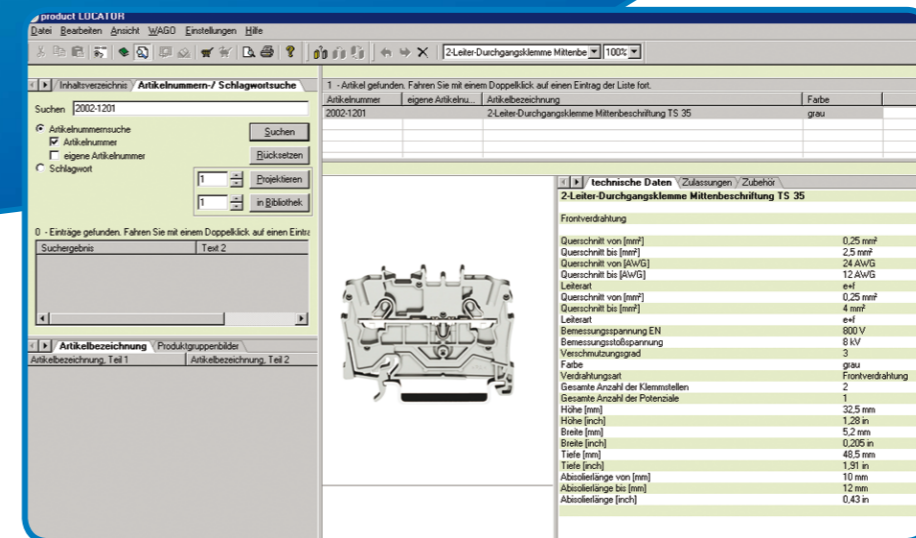
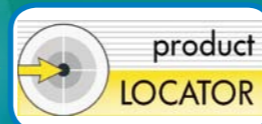
ProServe® – Planning at a New Level



CAD

smartDESIGNER

productLOCATOR



RUPLAN



Engineering Base



ELCAD



In Version 6, the ProServe® software was changed over from Access databases to an SQL server database. With this new version, previous individual databases are stored in a master database on the SQL server.

IMPORTANT: Only ACCESS databases of version 5.4 can be changed over to an SQL server!

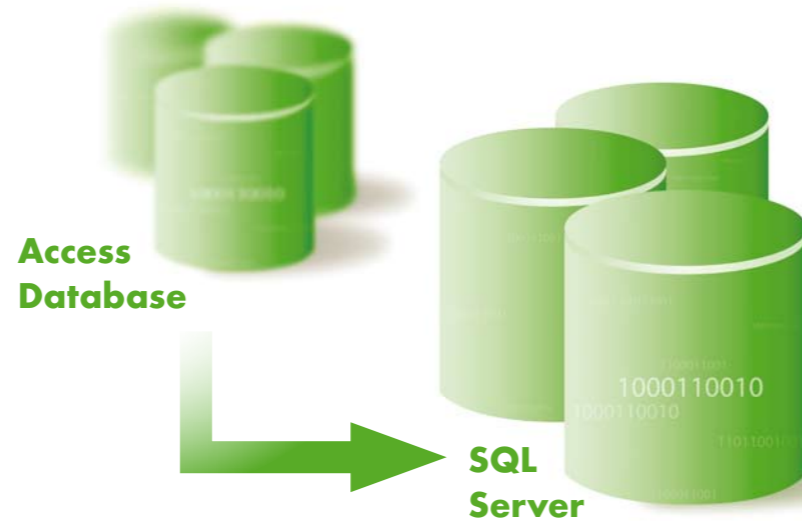
Your benefits from the database changeover:

- Projects in XML format from previous versions remain available
- Increased availability
- Higher performance
- Improved network capability
- Easy update
- Safe, time-saving operation

For download, please go to www.wago.com:

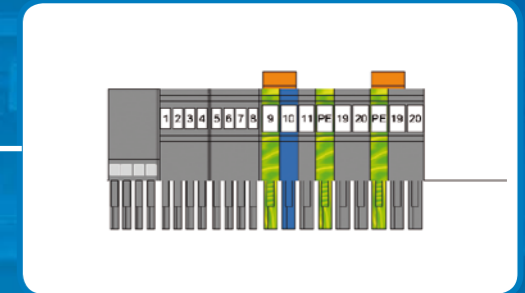
**Service/ProServe®/Software/
Download ProServe®-Software V6**

Here you can find more about the database changeover.



Dividing X-COM® projects:

- Two individual files for carrier terminal blocks and female plugs
- Faster ordering in two separate projects



Plugs



Carrier terminal blocks

Further benefits of new Version 6

Export from smartDESIGNER to smartSCRIPT:

- Independent operation on "printer PC"

Marking strips – horizontal separator line:

- Individual setting of horizontal and vertical separator lines

Export of item lists:

- Different options can be selected to export parts lists into individual files or as sum list
- Easy and fast further processing, e.g. SAP

AutoSave:

- Automatic storage after 5 minutes

Compressing terminal blocks:

- Select blocks with empty spaces, click "Compress block" via right mouse button

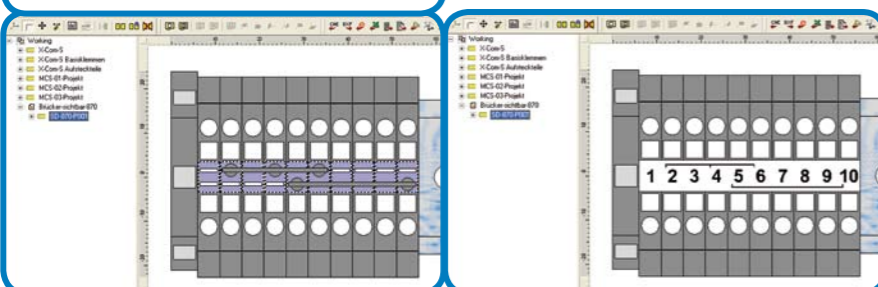
Individual MCS projects:

- Easy communication via pictures
- Creation of individual data sheets
- Time-saving production via manufacturing documents
- Time saving via improved documentation options



Jumper positions on strips:

- Jumper positions below the strip are now shown and printed on the strip especially for 870 Series
- Improved documentation for rail assembly



The Marking System in Switchgear Cabinet – All at a Glance

Marking Strips/Labels

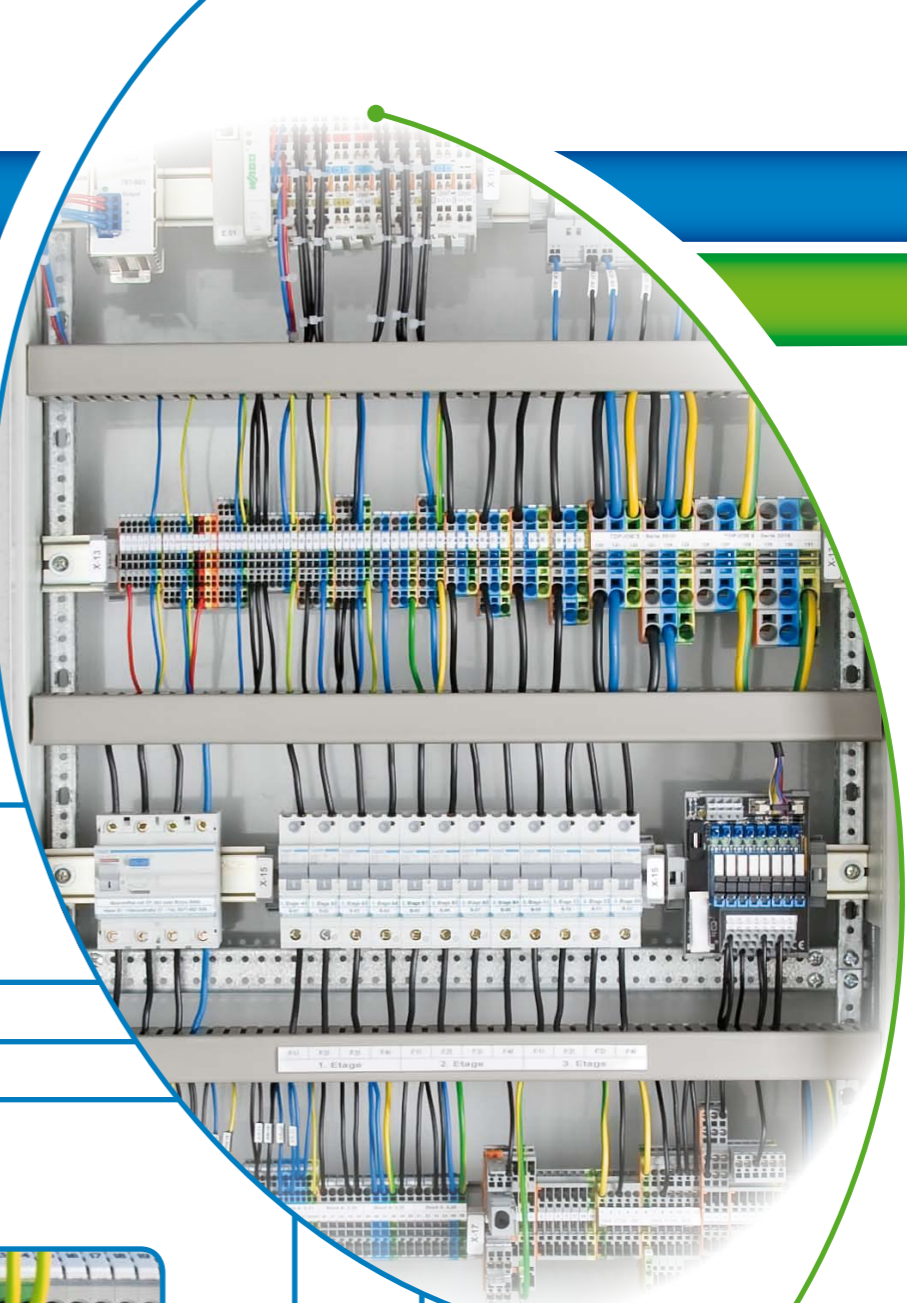
Item no.	Continuous Strips			
210-701	Marking strips	15 mm	white	50 m roll
709-120	Receptacle for marking strips		transp.	1 m long
210-732	Continuous label	3 mm	white	12 lengths at 25 m
Labels				
210-703	Label roll	70 x 100 mm	white	500 pcs/roll
210-704	Label roll	70 x 100 mm	silver	500 pcs/roll
210-705	Label roll	6 x 15 mm	white	3000 pcs/roll
210-705/000-002	Label roll	6 x 15 mm	yellow	3000 pcs/roll
210-706	Label roll	9 x 15 mm	white	3000 pcs/roll
210-706/000-002	Label roll	9 x 15 mm	yellow	3000 pcs/roll
210-707	Label roll	8 x 20 mm	white	3000 pcs/roll
210-707/000-002	Label roll	8 x 20 mm	yellow	3000 pcs/roll
210-708	Label roll	9.5 x 25 mm	white	3000 pcs/roll



210-707/000-002



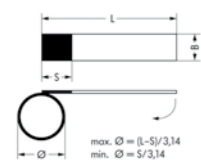
210-701 and 709-120



Wire Marking



Marking sleeve 12 mm, for core diameter	Item no.	Marking sleeve 23 mm, for core diameter	Item no.
Marker card for plotter, 12 mm	211-110	Marker card for plotter, 23 mm	211-120
Marker card for TT printer, 12 mm	211-111	Marker card for TT printer, 23 mm	211-121
1.6-3.2 mm or 0.25 mm ² -1.5 mm ²	211-112	1.6-3.2 mm or 0.25 mm ² -1.5 mm ²	211-122
2.2-4.5 mm or 0.5 mm ² -4 mm ²	211-113	2.2-4.5 mm or 0.5 mm ² -4 mm ²	211-123
3.7-5.9 mm or 2.5 mm ² -6 mm ²	211-114	3.7-5.9 mm or 2.5 mm ² -6 mm ²	211-124
4.8-7.5 mm or 6 mm ² -16 mm ²	211-115	4.8-7.5 mm or 6 mm ² -16 mm ²	211-125



Marking sleeve for cable tie, 23 mm, for single cores from 10 mm **211-129**

Cable tie (2.5 x 100) mm **807-0090/0101-0100**

Labels on DIN A4 sheets for laser printers

Marker surface "S" = 9 mm, "B" = 17 mm, "L" = 35 mm for cable diameter max. 8 mm
70 labels per sheet **211-150**
Marker surface "S" = 13 mm, "B" = 21 mm, "L" = 56 mm for cable diameter max. 14 mm
32 labels per sheet **211-151**
Cable tie marker KBM 25 x 10 **211-135**

Labels on roll for thermal transfer printers

Marker surface "S" = 8 mm, "B" = 18 mm, "L" = 35 mm for cable diameter max. 9 mm
9000 labels per roll **211-155**
Marker surface "S" = 13 mm, "B" = 23 mm, "L" = 51 mm for cable diameter max. 12 mm
5000 labels per roll **211-156**

Core marker for threading

on roll, 2,000 pcs, white / 0.75 - 1.5 mm **211-161**
on roll, 2,000 pcs, white / 2.5 - 6.0 mm **211-162**

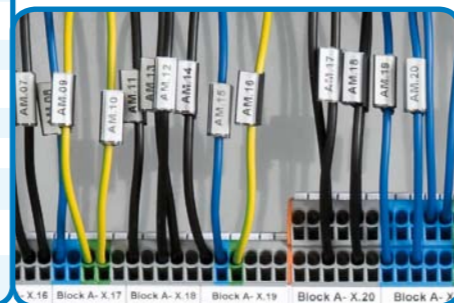


211-155

211-135

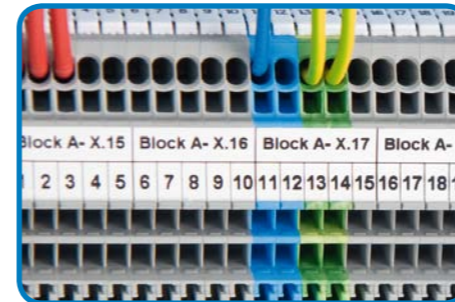


211-161



211-121, fixed with 211-129

2009-110



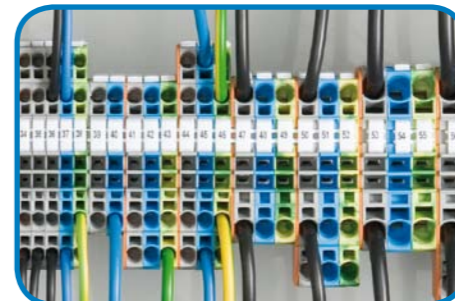
Marking Strips



... for TOPJOB®S Series **Item no.**
white, plain, width 11 mm
50 m roll **2009-110**

... for 870, 869, 862, 270 and I/O 750 Series
white, plain, width 7.5 mm
50 m roll **709-178**
300 m roll **709-188**
translucent, plain, width 7.5 mm
50 m roll **709-177**
300 m roll **709-187**

2009-114



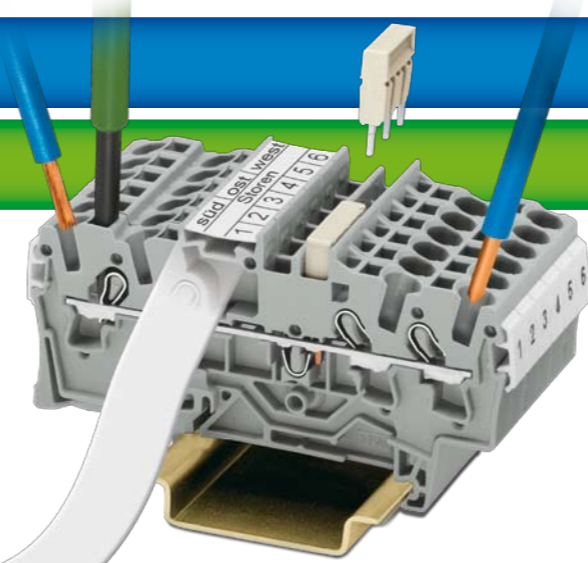
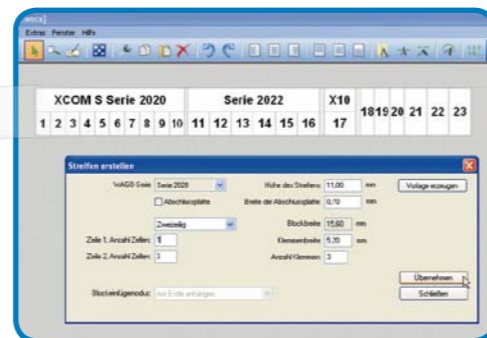
2009-115

WMB Inline



Item no.
Pitch 5 mm, stretchable 5 mm - 5.2 mm, on roll
white, 1,500 pieces **2009-115**
white, 8,000 pieces **2009-135**
Pitch 4 mm, stretchable 4 mm - 4.2 mm, on roll
white, 2,000 pcs **2009-114**
white, 9,500 pcs **2009-134**

WAGO Thermal Transfer Printer Overview



- smartSCRIPT**
- Extensive import functions from CAE systems, MS Office and WAGO smartDESIGNER
 - WYSIWYG marking
 - Automatic plotter calibration
 - Extensive library, including marker carriers
 - Symbol library
 - Text length checking
 - Several languages available
 - Fully compatible with EG 450 Engraver
 - Direct output to thermal transfer printer
 - Creation of custom markers for engraver/plotter

DYMO RHINO 6000

Included:	Hard shell case, mains adapter, battery, USB cable, software, 9 mm tape made of vinyl, white - 24 mm tape made of flexible nylon, white
Print resolution:	180 dpi
Tape ejector:	Yes
Heights of tape:	6 mm, 9 mm, 12 mm (11 mm TOPJOB®S), 19 mm, 24 mm
Types of tape:	Permanent polyester, flexible nylon, vinyl, heat-shrinkable tube
Keyboard:	ABC
Tape cutter:	Yes
Shock protection:	Yes
Size of display:	65 x 35 mm
Weight:	898 g incl. battery
Dimensions:	245.1 x 124.9 x 65.0 mm
Symbols:	Yes
Barcode:	Yes (e.g. Code 39, Code 128, EAN 8 + 13)
PC connection:	USB
Print preview:	Yes
Hours of operation/battery:	8 hours
Battery charge indicator:	Yes

Accessories

WAGO supplementary set for DYMO RHINO 6000	Item no.
including ProServe® flyer, WAGO software and installation instructions	258-6100
Polyester strips for TOPJOB®S marking	
11 mm wide strips - 5.5 m running length in a cartridge	211-611
Additional options:	
Adhesive strips, 9 mm, white - 5.5 m	211-612
Adhesive strips, 19 mm, white - 5.5 m	211-613
Heat-shrinkable tube, white - 9 mm x 1.5 m	211-614
Heat-shrinkable tube, white - 19 mm x 1.5 m	211-615

DYMO RHINO 6000 Item No. 258-6000

- WAGO marking cartridge for rail-mounted terminal block marking
- TOPJOB®S marking
- USB interface (processing via Windows printer drive)
- Manual print output or via smartSCRIPT
- Hotkeys for fuse marking, patch cabinets, cable and wire marking
- Own library
- Carrying case



TP 343 Thermal Transfer Printer TP 298+ Thermal Transfer Printer Accessories



	258-343	258-298	Item no.
Printing method	Thermal/thermal transfer	Thermal/thermal transfer	External coil mounting system
Print resolution	300 dpi	300 dpi	from 8,000 pcs WMB 258-169
Print width	max. 104 mm	108.4 mm	
Interfaces	Parallel Centronics USB+ETHERNET	Serial RS-232 C ETHERNET10/100 USB Base T	Cutter for TP 298 258-161

Item no.	Ink ribbon	Width	Marking accessories	Item no.
258-143	Resin/wax	60 mm	Labels (paper)	
258-144	Resin/wax	100 mm	Labels (paper)	
			Cable marking 211-155 and 211-156	
258-149	Resin	50 mm	Marking strips for 2009 Series	
			Marking strips for 709 Series	
			WMB Inline (TP 298 only)	USB cable for TP 343 258-344
258-150	Resin	76 mm	Wire marking 211-111 and 211-121 for labels (polyester) up to 76 mm in width	
258-157	Resin	100 mm	Wire marking 211-111 and 211-121 for labels (polyester) up to 100 mm in width	

Plotter – The Universal Device

Marker Cards

	Item no.
WMB 5 mm	793-501
WMB 4 - 4.2 mm	793-4501
WMB 5 - 5.2 mm	793-5501
WSB 5 - 8 mm	209-501
Miniature WSB	248-501
WSB 4 mm	209-701

Item number suffix for colored marker cards

yellow	.../000-002
red	.../000-005
blue	.../000-006
gray	.../000-007
orange	.../000-012
light green	.../000-017
green	.../000-023
purple	.../000-024



248-501



IP 200



EG 450

IP 350 A3/IP 350 A4 Plotters

Plotter Pens

EG 450 Engraver

Marker Card Carrier Plates for IP 350 Plotter



	Item no.		Item no.		Item no.		Item no.		Item no.
IP 350 A3	258-350	Plotter pens for outside and inside marking	258-450	Carrier plates for WAGO	258-361	Carrier plates for Phoenix	258-372		
IP 350 A4	258-451			WSB 5 mm (209-501)		ZBM			
Voltage range	Nominal voltage	WAGO plotter pen	Disposable	Extension module for IP 350 Plotter	258-362	ZB	258-373		
	120-240 V ~ 50/60 Hz	0.18 mm line width	258-326	Consisting of the "EG 450" control unit	258-363	ZBN	258-374		
	min. 90 V ~ max. 264 V	0.25 mm line width	258-327	and Vacuum Cleaner "VC 450"	258-366	ZBFM	258-375		
		0.35 mm line width	258-328	incl. graver 0.3 mm + 0.4 mm	258-368	BNZ	258-377		
		0.5 mm line width	258-329	Graver set	258-365	BN-ZB	258-378		
				258-452	258-410	SS-ZB	258-379		
				15° angled	258-367	LBHZ	258-380		
				for processing plastics	258-364	PABA	258-381		
		WAGO plotter pen	Reusable	Graver lengths	258-369	GPE	258-382		
		0.18 mm line width	258-226	0.2/0.3/0.4/0.5/0.7/1.0 mm		Universal engraver and plotter carrier plates			
		0.25 mm line width	258-227	Calibration aid	258-453	DIN A4	258-383		
		0.35 mm line width	258-228			DIN A3	258-472		
		0.50 mm line width	258-229	Graver (stainless steel)		Carrier plates for Weidmüller			
				36° angled for metal processing		MC Universal	258-387		
IP 200	258-200	WAGO plotter pen for internal marking		0.2 mm graver width	258-452/000-002	MC SF4-6	258-472		
				Graver width 0.3 mm	258-452/000-003	Carrier plate for Wöртz/Allen Bradley			
				0.4 mm graver width	258-452/000-004	Universal	258-389		
Plotter accessories		0.18 mm line width, black	258-426	0.5 mm graver width	258-452/000-005	Carrier plate for Möller			
Replacement cartridges 5 x 1 ml	258-141	0.25 mm line width, black	258-427	0.7 mm graver width	258-452/000-007	XB M22-XST	258-390		
Cleaning set	258-139	0.35 mm line width, black	258-428	1.0 mm graver width	258-452/000-010	Carrier plates for Partex and Contaclip			
Cleaning fluid	258-140	0.50 mm line width, black	258-429	Vacuum bag	258-457	PA+1, UBH 5	258-391		
				for EG 450 Engraver		PA+2, UBH 10	258-392		
Service kit	258-147	0.18 mm line width, red	258-426 /000-002	Graver (stainless steel)		Carrier plate for ABB Entelec			
		0.25 mm line width, red	258-427 /000-002	0.2 mm graver width	258-458/000-003	Universal	258-394		
		0.35 mm line width, red	258-428 /000-002	0.4 mm graver width	258-458/000-004	Carrier plates for Siemens/VIPA			
		0.50 mm line width, red	258-429 /000-002		258-456	Siemens SPS/VIPA	258-473		
						Conta-Clip			
						Universal	258-398		

SUPPORT
HOTLINE
Support.proserve@wago.com
+49 (0)571-887-630

WAGO Kontakttechnik GmbH & Co. KG
PO Box 2880 · 32385 Minden
Hansastraße 27 · 32423 Minden
Phone:
Head Office +49 (0)51/887 - 0
Sales +49 (0)51/887 - 222
Order Service +49 (0)51/887 - 333
Technical Support +49 (0)51/887 - 555
Fax: +49 (0)51/887 - 169
E-mail: info@wago.com
Internet: www.wago.com

