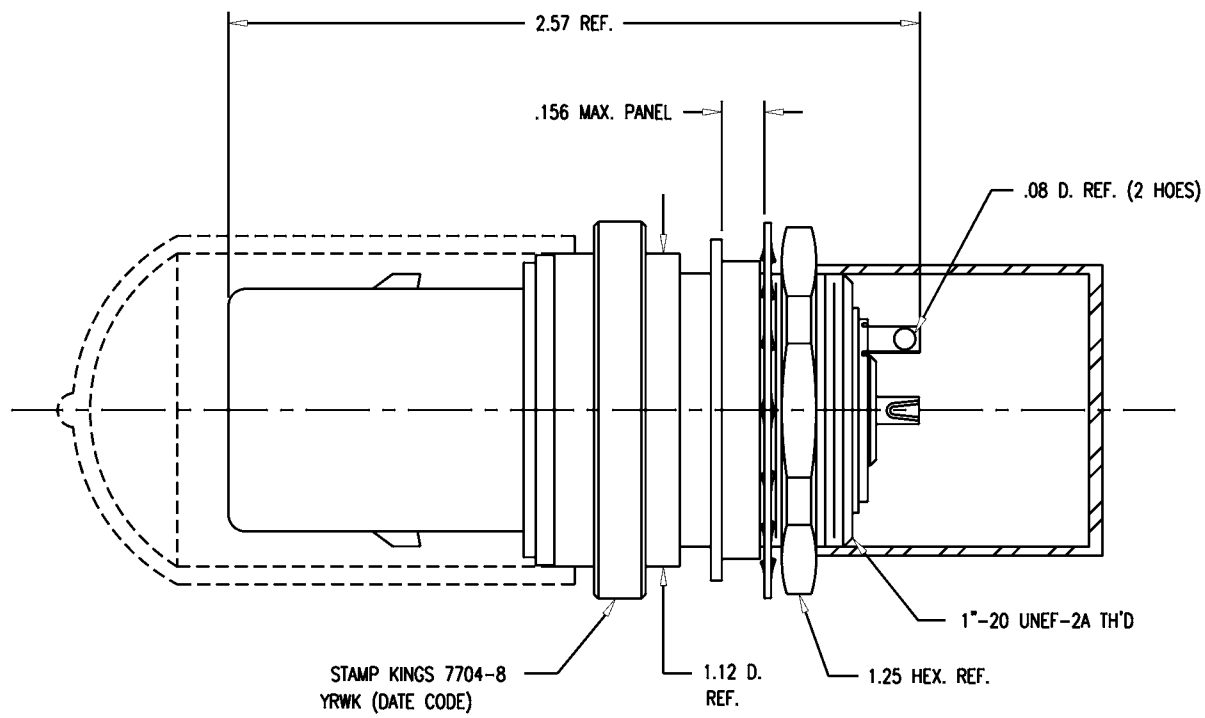


DASH NO. M CODE MADE FROM

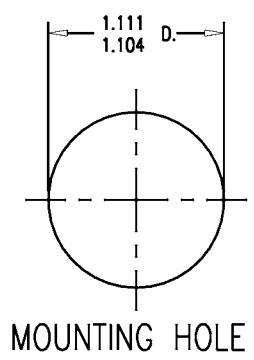
GSD

7704-8

REVISIONS	
ISSUE	CHANGES
0	ER 36669 ME 11/01/95
1	CN 37200 A KH 11/19/96
2	CN 38119 C BDH 11/03/00
3	CN 38177 C TML 01/10/01



STAMP KINGS 7704-8
YRWK (DATE CODE)



MOUNTING HOLE

WAS: QGS0999 7704-8

SCALE 2:1	
APPROX SURFACE AREA	
USED ON	
REF: KP-8050-002-000	
RCPT, BKHD, TRI-LOC, SERIAL DIGITAL	
DRAWN ME	DATE 11/01/95
DESIGN FD	DATE 11/01/95
APPR.	DATE

NOTES:

- MATERIALS:
 - CAPS: VINYL
 - INSULATORS: TEFLON, ASTM-D-4894
 - GASKETS: SILICONE RUBBER, ZZ-R-765
 - CONDUCTIVE GASKET: CONSIL C 87-10004, 60-70 DUROMETER
 - LOCKWASHER
 - RETAINING RING } SPRING STEEL, PER ASTM A682
 - E-RING }
 - OUTER CONTACT: PHOSPHOR BRONZE, ASTM-B-103
 - BODY: BER. COPPER, ASTM-B-196
 - ALL OTHER METAL PARTS: BRASS, ASTM-B16
- FINISHES:
 - CENTER CONTACTS: GOLD PLATE PER MIL-G-45204
 - ALL OTHER METAL PARTS: KINGS TARNISH RESISTANT NICKEL FINISH (TR-5)
- ELECTRICAL CHARACTERISTICS:
 - FREQUENCY RANGE: DC-500 MHZ
 - NOMINAL IMPEDANCE: 75 Ω
 - VOLTAGE BREAKDOWN: CENTER CONDUCTOR/INNER GROUND: 1500 VOLTS RMS
 - INNER GROUND/OUTER GROUND: 500 VOLTS RMS

UNLESS OTHERWISE SPECIFIED		
1. TOLERANCES: FRACTIONS & 2 PLACE DECIMALS ± .010	2. REMOVE ALL BURRS, BREAK SHARP EDGES .005 MAX.	7. ALL LEAD THREADS TO BE CHAMFERED 45° TO ROOT DIAMETER.
3 PLACE DECIMALS ± .004 ANGLES ± 1°	3. NO FILLETS PERMITTED.	* CRITICAL DIMENSIONS
CONCENTRICITY OF ANY 2 DIAMETERS MAY NOT EXCEED HALF THE SUM OF THEIR TOLERANCES.	4. SURFACE ROUGHNESS 63 MICROINCHES RMS MAX.	
	5. ALL DIMENSIONS PRIOR TO PLATING.	
	6. ALL PLATING IN ACCORDANCE WITH KER 10004.	

GSD

KINGS
ELECTRONICS CO., INC.
ROCK HILL, SOUTH CAROLINA 29730

7704-8