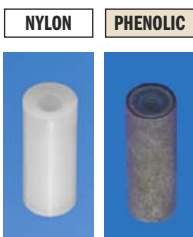
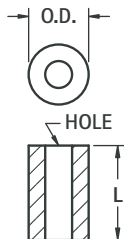
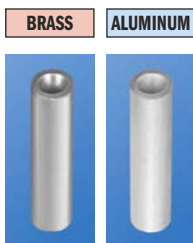


ROUND CLEAR HOLE SPACERS

CLEAR HOLE	O.D.	L LENGTH	MATERIAL:		NYLON CAT. NO.	PHENOLIC CAT. NO.	L LENGTH	O.D.	CLEAR HOLE
			BRASS CAT. NO.	ALUMINUM CAT. NO.					
.120 (3.0) For #4	.250 (6.4)	.125 (3.2)	1909	2036	875	—	.125 (3.2)	.250 (6.4)	.120 (3.0) For #4
		.250 (6.4)	1454A	3457	876	360	.250 (6.4)		
		.375 (9.5)	1454B	3458	877	361	.375 (9.5)		
		.500 (12.7)	1454C	3459	878	362	.500 (12.7)		
		.625 (15.9)	1919	2314	879	—	.625 (15.9)		
		.750 (19.1)	1454D	3460	880	363	.750 (19.1)		
		.875 (22.2)	1920	3402	881	—	.875 (22.2)		
		1.000 (25.4)	1454E	3461	882	364	1.000 (25.4)		
		1.500 (38.1)	1924	3462	779	365	1.500 (38.1)		
		2.000 (50.8)	1925	3463	—	366	2.000 (50.8)		
.140 (3.5) For #6	.250 (6.4)	.125 (3.2)	1934	3403	883	—	.125 (3.2)	.250 (6.4)	.140 (3.5) For #6
		.250 (6.4)	1457A	3464	884	367	.250 (6.4)		
		.375 (9.5)	1457B	3465	885	368	.375 (9.5)		
		.500 (12.7)	1457C	3466	886	369	.500 (12.7)		
		.625 (15.9)	1935	3429	887	—	.625 (15.9)		
		.750 (19.1)	1457D	3467	888	370	.750 (19.1)		
		.875 (22.2)	1936	3438	889	—	.875 (22.2)		
		1.000 (25.4)	1457E	3468	890	371	1.000 (25.4)		
		1.500 (38.1)	1937	3469	789	372	1.500 (38.1)		
		2.000 (50.8)	1938	3470	—	373	2.000 (50.8)		
.171 (4.3) For #8	.250 (6.4)	.125 (3.2)	1942	4258	891	—	.125 (3.2)	.250 (6.4)	.171 (4.3) For #8
		.250 (6.4)	1480	3471	892	1490	.250 (6.4)		
		.375 (9.5)	1481	3472	893	1491	.375 (9.5)		
		.500 (12.7)	1482	3473	894	1492	.500 (12.7)		
		.625 (15.9)	2032	4259	895	—	.625 (15.9)		
		.750 (19.1)	1483	3474	896	1493	.750 (19.1)		
		.875 (22.2)	2033	4260	897	—	.875 (22.2)		
		1.000 (25.4)	1484	3475	898	1494	1.000 (25.4)		
		1.500 (38.1)	2034	3476	799	374	1.500 (38.1)		
		2.000 (50.8)	2035	3477	—	375	2.000 (50.8)		
.196 (5.0) For #10	.312 (7.9)	.250 (6.4)	1662	4261	790	453	.250 (6.4)	.312 (7.9)	.196 (5.0) For #10
		.375 (9.5)	1663	4262	791	454	.375 (9.5)		
		.500 (12.7)	1664	4263	792	455	.500 (12.7)		
		.625 (15.9)	1665	4264	793	—	.625 (15.9)		
		.750 (19.1)	1666	4265	794	456	.750 (19.1)		
		.875 (22.2)	1667	4266	795	—	.875 (22.2)		
		1.000 (25.4)	1668	4267	796	457	1.000 (25.4)		
		1.500 (38.1)	1669	4268	797	458	1.500 (38.1)		
		2.000 (50.8)	1672	4269	—	459	2.000 (50.8)		

MATERIAL:
 Brass: ASTM-B16, Nickel Plate (QQ-N-290)
 Aluminum: ASTM B211, Clear Iridite (MIL-C-5541)
 Nylon: Nylon 6/6, UL Rated 94V-2
 Phenolic: PBE Grade Natural Color Phenolic

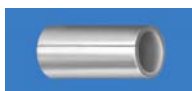


ALUMINUM ECONOMY SPACERS

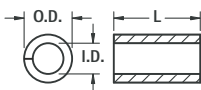
- Made of flat strip aluminum and rolled on precision equipment.
- Assures maximum bearing surface, square ends.

Aluminum:

5052-H34 per QQ-A-250/8b



• Tight Joint on Outside Diameter

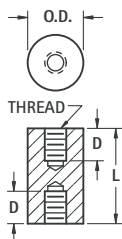


SPACER FOR	I.D.	O.D. REF.
# 4	.120 (3.0)	.167 (4.3)
# 6	.148 (3.8)	.193 (4.9)
# 8	.176 (4.5)	.232 (5.9)

L LENGTH	SCREW CLEARANCE			L LENGTH	SCREW CLEARANCE		
	# 4 CAT. NO.	# 6 CAT. NO.	# 8 CAT. NO.		# 4 CAT. NO.	# 6 CAT. NO.	# 8 CAT. NO.
.187 (4.7)	397	—	—	.750 (19.1)	418	425	432
.250 (6.4)	398	405	412	.875 (22.2)	419	426	433
.312 (7.9)	399	406	413	1.000 (25.4)	420	427	434
.375 (9.5)	400	407	414	1.250 (31.8)	421	428	435
.437 (11.1)	401	408	415	1.500 (38.1)	422	429	436
.500 (12.7)	402	409	416	1.750 (44.5)	—	430	437
.625 (15.9)	403	410	417	2.000 (50.8)	—	—	438

CERAMIC STANDOFFS

- Ideal for very high temperature conditions
- Commercial and military types available
- Military types meet MIL-1-010, NL # clearly marked
- Exceptional strength in compression and tension
- Withstands very high voltage without flashover
- Special sizes available upon request



MATERIAL: Grade L5 Ceramic

COMMERCIAL					
CAT. NO.	L LENGTH	O.D.	T THREAD	D DEPTH	
7710	.250 (6.4)	.250 (6.4)	6-32	THRU	
7711	.500 (12.7)	.250 (6.4)	6-32	.156 (4.0)	
7712	.375 (9.5)	.375 (9.5)	6-32	.156 (4.0)	
7713	.500 (12.7)	.375 (9.5)	6-32	.156 (4.0)	
7714	.500 (12.7)	.500 (12.7)	6-32	.140 (3.6)	
7715	.750 (19.1)	.500 (12.7)	6-32	.250 (6.4)	
7716	1.000 (25.4)	.500 (12.7)	6-32	.375 (9.5)	
7717	1.500 (38.1)	.500 (12.7)	6-32	.562 (14.3)	
7718	2.500 (63.5)	.500 (12.7)	6-32	.500 (12.7)	
7719	2.500 (63.5)	.750 (19.1)	1/4 - 20	.750 (19.1)	
7720	4.000 (101.6)	.750 (19.1)	1/4 - 20	.750 (19.1)	

MILITARY					
CAT. NO.	L LENGTH	O.D.	T THREAD	D DEPTH	NL #
7661	.500 (12.7)	.375 (9.5)	6-32	.156 (4.0)	NL523W01-004
7662	.625 (15.9)	.375 (9.5)	6-32	.250 (6.4)	NL523W01-005
7663	.625 (15.9)	.500 (12.7)	8-32	.187 (4.7)	NL523W02-005
7664	.750 (19.1)	.375 (9.5)	6-32	.250 (6.4)	NL523W01-006
7665	.750 (19.1)	.500 (12.7)	8-32	.250 (6.4)	NL523W02-006
7666	1.000 (25.4)	.375 (9.5)	6-32	.375 (9.5)	NL523W01-008
7667	1.000 (25.4)	.500 (12.7)	8-32	.375 (9.5)	NL523W02-008
7668	1.000 (25.4)	.750 (19.1)	10-32	.375 (9.5)	NL523W03-008
7669	1.250 (31.8)	.375 (9.5)	6-32	.375 (9.5)	NL523W01-010
7670	1.250 (31.8)	.500 (12.7)	8-32	.375 (9.5)	NL523W02-010
7671	1.250 (31.8)	1.000 (25.4)	1/4 - 20	.437 (11.1)	NL523W04-010
7672	1.500 (38.1)	.375 (9.5)	6-32	.375 (9.5)	NL523W01-012
7673	1.500 (38.1)	.500 (12.7)	8-32	.375 (9.5)	NL523W02-012
7674	1.500 (38.1)	.750 (19.1)	10-32	.375 (9.5)	NL523W03-012
7675	1.500 (38.1)	1.000 (25.4)	1/4 - 20	.500 (12.7)	NL523W04-012
7676	2.000 (50.8)	.375 (9.5)	6-32	.375 (9.5)	NL523W01-016
7677	2.000 (50.8)	.500 (12.7)	8-32	.375 (9.5)	NL523W02-016
7678	2.000 (50.8)	.750 (19.1)	10-32	.375 (9.5)	NL523W03-016