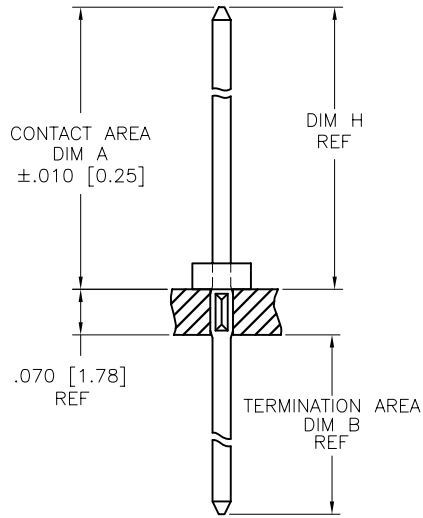
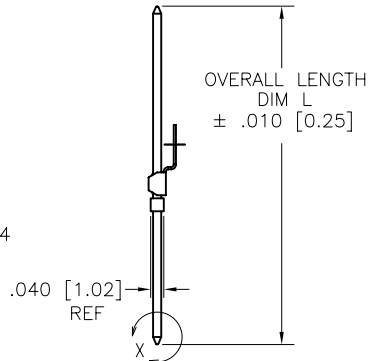
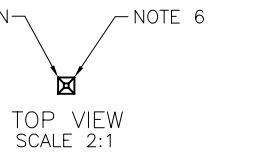
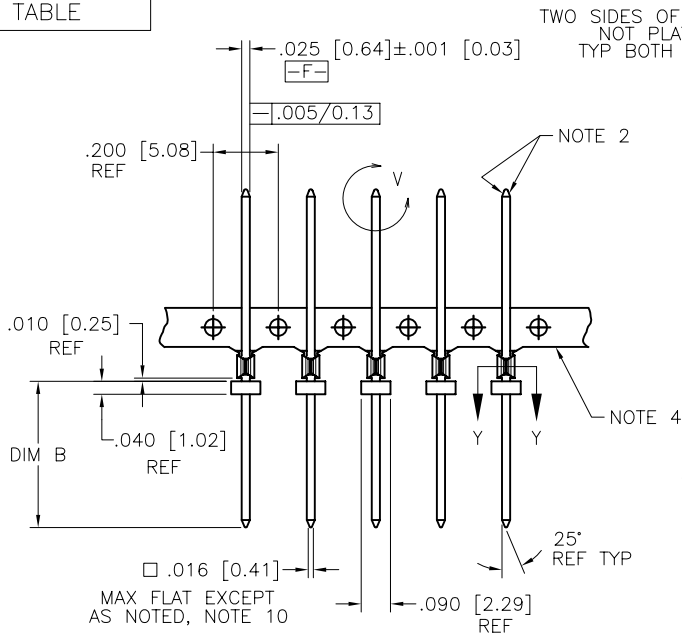
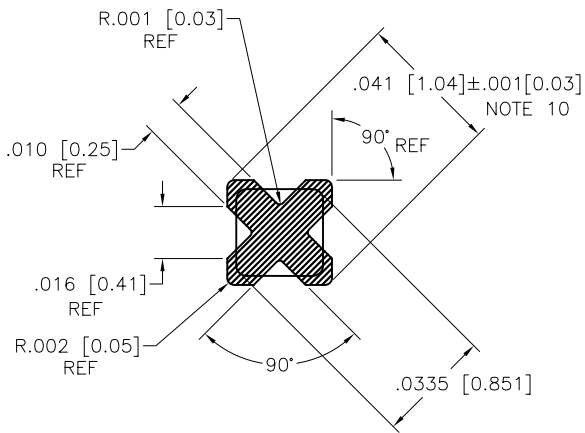


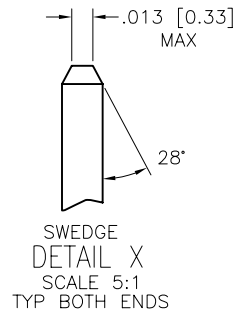
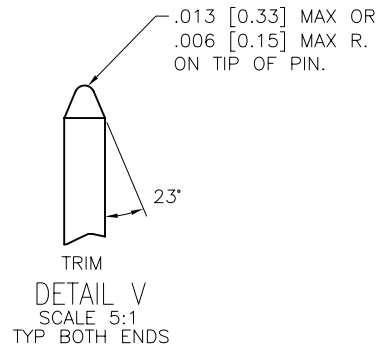
PRODUCT NUMBER
SEE TABLE



SECTION THRU PC BOARD
SCALE 2:1



SECTION Y-Y
SCALE 10:1
(FERRULE REMOVED)



mat'l. code		SEE NOTE 1		surface ASME Y14.5		tolerance ASME Y14.5		projection		product family	
ltr	ec'n no	dr	date	angles	tolerances unless otherwise specified	INCH/MM		PIN PRODUCTS			
K	C10098	MRC	1991-06-06		XX+01/XX+3			title BERGPIN® .200"[5.08]cc			
L	V61039	EPK	1996-07-24		XXX+005/XXX+13			.041"[1.04] DIA. STAR WITH SOLDER WASHER			
M	V71499	HTB	1997-10-31	0° ±2'	XXXX+0020/XXX+051	scale 2:1		sheet 1 of 4 size			
N	V90053	SAR	1999-01-25	dr	E. KROPIEWNICKI	1996-07-24		dwg no 76494			
P	V01594	JRW	2000-07-12	engr	L. FYE	1996-07-24		A4			
R	V06-0682	JRV	2004-07-19	chr	T. BREWBAKER	1996-07-24		type CUSTOMER Drawing			
S	V08-0354	HTB	2008-08-25	appd	L. FYE	1996-07-24					
sheet index	revision	S	S	S	S						
	sheet	1	2	3	4						



PRODUCT NUMBER	PLATING	UNDERPLATING
76494-1YY	30μ" [0.76μ] MIN Au	50μ" [1.27μ] MIN Ni
76494-2YY	U N A S S I G N E D	
76494-3YY	50μ" [1.27μ] MIN Au	50μ" [1.27μ] MIN Ni
76494-4YY	120μ" [3.05μ] MIN 93/7 SnPb	50μ" [1.27μ] MIN Ni
76494-5YY	30μ" [0.76μ] MIN GXT™	50μ" [1.27μ] MIN Ni
76494-6YY	15μ" [0.38μ] MIN GXT™	50μ" [1.27μ] MIN Ni
76494-7YY	U N A S S I G N E D	
76494-8YY	U N A S S I G N E D	
76494-9YY	15μ" [0.38μ] MIN Au	50μ" [1.27μ] MIN Ni

NOTES:

- ① PIN MATERIAL: PHOS BRONZE 3/4 HARD PER ASTM-B-159-66
SOLDER WASHER MATERIAL : TIN/LEAD ALLOY 60/40
- ② BURNISH MARKS ON PIN PERMITTED, BURR .003/.08 MAX BULGE .0005/.013 TYP.
3. SEE PRODUCT SPECIFICATION BUS-12-064 FOR P.C. BOARD HOLE DIAMETER AND P.C. BOARD HOLE PLATING INFORMATION.
- ④ FOR MANUFACTURING PURPOSES ONLY.
- ⑤ THE .041±.001 [1.04±.03] FEATURE SHALL BE CONCENTRIC TO THE WIRE DIAGONAL WITHIN .004 [0.10] TIR.
- ⑥ .003 [0.08] R MAX REF TYP 4X ON WIRE WRAP PORTION OF PIN.
7. REFER TO BUS-24-001 FOR SUPER TIP DESIGN.
8. CENTER LINE OF TERMINAL MUST BE IN A TRUE POSITION WITHIN .015 [0.38] DIA. WITH RESPECT TO THE HOLE AXIS AFTER INSERTION IN P C BOARD.
9. FOR MACHINE APPLICATION, THE STANDARD BERGPIN MACHINES MUST BE MODIFIED.
- ⑩ DOUBLE ENDED PINS AS MARKED MUST MEET SPECS IN VIEWS V & X ON BOTH ENDS.

11. SOLDER MATERIAL VOLUME:
.0000734 CU IN [0.001203 CU CM].

12. USE FIRST TWO DIGITS OF "H" DIMENSIONS FOR DASH NUMBER OF PUNCH FROM MACHINE EPL:

EXAMPLE:
P/N 76494-001 PUNCH P/N FROM EPL
BP151-133632-028
DIM "H" FOR .062 [1.57] BP171-133632-028
THICK BOARD=.283 [7.19] BP191-133632-028

mat'l. code		surface		tolerance		projection		product family	
SEE NOTE 1		ASME Y14.5		ASME Y14.5				PIN PRODUCTS	
ltr	ecn no	dr	date	tolerances unless otherwise specified		INCH/MM		title	
s				angles	XX*.01/X*.3			BERGPIN® .200"[5.08]cc	
				0° ±2'	XXX*.005/XX*.13			.041"[1.04] DIA. STAR	
					XXXX*.0020/XXX*.051	scale 1:1		WITH SOLDER WASHER	
		dr	E. KROPIEWNICKI	1996-07-24			dwg no		
		engr	L. FYE	1996-07-24			sheet 2 of 4		
		chr	T. BREWBAKER	1996-07-24			size		
		appd	L. FYE	1996-07-24			A4		
sheet		revision						type	
index		sheet						CUSTOMER Drawing	



PRODUCT NUMBER	CONTACT AREA		TERM. AREA		DIM H FOR .062/1.58 BOARD		DIM H FOR .093/2.36 BOARD		DIM H FOR .125/3.18 BOARD		OVERALL LENGTH		NOTE 10
	DIM A	DIM A	DIM B	DIM B	ENGLISH	METRIC	ENGLISH	METRIC	ENGLISH	METRIC	DIM L	DIM L	
	ENGLISH	METRIC	ENGLISH	METRIC	ENGLISH	METRIC	ENGLISH	METRIC	ENGLISH	METRIC	ENGLISH	METRIC	
76494-X01	0.278	7.06	0.060	1.52	0.283	7.19	0.268	6.81	0.253	6.43	0.408	10.36	-
76494-X02	0.308	7.82	0.060	1.52	0.313	7.95	0.298	7.57	0.283	7.19	0.438	11.13	-
76494-X03	0.285	7.24	0.075	1.91	0.290	7.37	0.275	6.99	0.260	6.60	0.430	10.92	-
76494-X04	0.315	8.00	0.060	1.52	0.320	8.13	0.305	7.75	0.290	7.37	0.445	11.30	-
76494-X05	0.315	8.00	0.075	1.91	0.320	8.13	0.305	7.75	0.290	7.37	0.460	11.68	-
76494-X06	0.368	9.35	0.060	1.52	0.373	9.47	0.358	9.09	0.343	8.71	0.498	12.65	-
76494-X07	0.375	9.53	0.060	1.52	0.380	9.65	0.365	9.27	0.350	8.89	0.505	12.83	-
76494-X08	0.315	8.00	0.125	3.18	0.320	8.13	0.305	7.75	0.290	7.37	0.510	12.95	YES
76494-X09	0.405	10.29	0.060	1.52	0.410	10.41	0.395	10.03	0.380	9.65	0.535	13.59	-
76494-X10	0.315	8.00	0.155	3.94	0.320	8.13	0.305	7.75	0.290	7.37	0.540	13.72	YES
76494-X11	0.428	10.87	0.060	1.52	0.433	11.00	0.418	10.62	0.403	10.24	0.558	14.17	-
76494-X12	0.475	12.07	0.060	1.52	0.480	12.19	0.465	11.81	0.450	11.43	0.605	15.37	-
76494-X13	0.405	10.29	0.135	3.43	0.410	10.41	0.395	10.03	0.380	9.65	0.610	15.49	YES
76494-X14	0.508	12.90	0.060	1.52	0.513	13.03	0.498	12.65	0.483	12.27	0.638	16.21	-
76494-X15	0.698	17.73	0.060	1.52	0.703	17.86	0.688	17.48	0.673	17.09	0.828	21.03	-
76494-X16	0.760	19.30	0.060	1.52	0.763	19.38	0.748	19.00	0.733	18.62	0.890	22.61	-
76494-X17	0.315	8.00	0.255	6.48	0.320	8.13	0.305	7.75	0.290	7.37	0.640	16.26	YES
76494-X18	0.405	10.29	0.060	1.52	0.410	10.41	0.395	10.03	0.380	9.65	0.535	13.59	-
76494-X19	0.443	11.25	0.315	8.00	0.448	11.38	0.433	11.00	0.418	10.62	0.828	21.03	YES
76494-X20	0.631	16.03	0.315	8.00	0.636	16.15	0.621	15.77	0.606	15.39	1.016	25.81	YES
76494-X21	0.315	8.00	0.179	4.55	0.320	8.13	0.305	7.75	0.290	7.37	0.564	14.33	YES
76494-X22	0.625	15.88	0.245	6.22	0.630	16.00	0.615	15.62	0.600	15.24	0.940	23.88	YES
76494-X23	0.230	5.84	0.060	1.52	0.235	5.97	0.220	5.59	0.205	5.21	0.360	9.14	-
76494-X24	0.575	14.61	0.060	1.52	0.580	14.73	0.565	14.35	0.550	13.97	0.705	17.91	-
76494-X25			U N A V	A I L	A B L E								
76494-X26	0.625	15.88	0.355	9.02	0.630	16.00	0.615	15.62	0.600	15.24	1.050	26.67	YES
76494-X27			U N A V	A I L	A B L E								

mat'l. code SEE NOTE 1				surface ASME Y14.5 <input checked="" type="checkbox"/> tolerance ASME Y14.5		projection 		product family PIN PRODUCTS	
ltr	ecn no	dr	date	tolerances unless otherwise specified				title BERGPIN® .200"[5.08]cc .041"[1.04] DIA. STAR WITH SOLDER WASHER	
s				angles	XX+01/XX+3 XXX+005/XXX+13	INCH/MM		dwg no	
				0° ±2'	XXXX+0020/XXX+051	scale 1:1		sheet 3 of 4 size	
				dr	E. KROPIEWNICKI 1996-07-26			76494 A4	
				engr	L. FYE 1996-07-26			type	
				chr	T. BREWBAKER 1996-07-26			CUSTOMER Drawing	
				appd	L. FYE 1996-07-26				
sheet index	revision			sheet					



PRODUCT NUMBER	CONTACT AREA		TERM. AREA		DIM H FOR .062/1.58 BOARD		DIM H FOR .093/2.36 BOARD		DIM H FOR .125/3.18 BOARD		OVERALL LENGTH		NOTE 10	
	DIM A	DIM A	DIM B	DIM B	ENGLISH	METRIC	ENGLISH	METRIC	ENGLISH	METRIC	DIM L	DIM L		
	ENGLISH	METRIC	ENGLISH	METRIC	ENGLISH	METRIC	ENGLISH	METRIC	ENGLISH	METRIC	ENGLISH	METRIC		
76494-X28			U	N	A	V	A	I	L	A	B	L	E	
76494-X29	0.755	19.18	0.337	8.56	0.760	19.30	0.745	18.92	0.730	18.54	1.162	29.51	YES	
76494-X30	0.490	12.45	0.140	3.56	0.495	12.57	0.480	12.19	0.465	11.81	0.700	17.78	YES	
76494-X31	0.590	14.99	0.140	3.56	0.595	15.11	0.580	14.73	0.565	14.35	0.800	20.32	YES	
76494-X32	0.298	7.57	0.060	1.52	0.303	7.70	0.288	7.32	0.273	6.93	0.428	10.87	-	
76494-X33	0.398	10.11	0.060	1.52	0.403	10.24	0.388	9.86	0.373	9.47	0.528	13.41	-	
76494-X34	0.468	11.89	0.060	1.52	0.473	12.01	0.458	11.63	0.443	11.25	0.598	15.19	-	
76494-X35	0.468	11.89	0.502	12.75	0.473	12.01	0.458	11.63	0.443	11.25	1.040	26.42	YES	
76494-X36	0.305	7.75	0.315	8.00	0.313	7.95	0.298	7.57	0.283	7.19	0.690	17.53	YES	
76494-X37	0.448	11.38	0.060	1.52	0.453	11.51	0.438	11.13	0.423	10.74	0.578	14.68	-	
76494-X38	0.228	5.79	0.060	1.52	0.233	5.92	0.218	5.54	0.203	5.16	0.358	9.09	-	
76494-X39	0.628	15.95	0.060	1.52	0.633	16.08	0.618	15.70	0.603	15.32	0.758	19.25	-	
76494-X40	0.288	7.32	0.060	1.52	0.293	7.44	0.278	7.06	0.263	6.68	0.418	10.62	-	
76494-X41	0.308	7.82	0.142	3.61	0.313	7.95	0.298	7.57	0.283	7.19	0.520	13.21	-	
76494-X42	0.285	7.24	0.287	7.29	0.290	7.37	0.275	6.99	0.260	6.60	0.642	16.31	-	
76494-X43	0.308	7.82	0.212	5.38	0.313	7.95	0.298	7.57	0.283	7.19	0.590	14.99	-	

mat'l. code		surface		tolerance		projection		product family	
SEE NOTE 1		ASME Y14.5		ASME Y14.5				PIN PRODUCTS	
ltr	ecn no	dr	date	tolerances unless otherwise specified				title	
s				angles	fin	fil	INCH/MM	BERGPIN® .200"[5.08]cc	
				0° ±2'	XXX+01/XX+3	XXXX+0020/XXX+051	scale	1:1	.041"[1.04] DIA. STAR
				dr	E. KROPIEWNICKI	1996-07-26			WITH SOLDER WASHER
				engr	L. FYE	1996-07-26			
				chr	T. BREWBAKER	1996-07-26			
				appd	L. FYE	1996-07-26			
sheet	revision								
index	sheet								