

PLEASE CHECK WWW.MOLEX.COM FOR LATEST PART INFORMATION

Part Number: **0760201006**
Status: **Active**
Overview: GbX I-Trac™ Backplane Connector System
Description: GbX I-Trac™ Right Angle Receptacle Module, 1.85mm by 3.70mm Pitch, Unguided, 7 Row, 6 Columns, 84 Circuits, Lead-Free

Documents:

[3D Model](#) [Packaging Specification PK-70873-607 \(PDF\)](#)
[Drawing \(PDF\)](#) [RoHS Certificate of Compliance \(PDF\)](#)
[Product Specification PS-75710-999-001 \(PDF\)](#)

Agency Certification

UL E29179

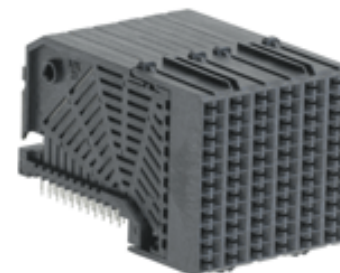
General

Product Family Backplane Connectors
Series [76020](#)
Application Coplanar, Daughtercard
Component Type PCB Receptacle
Overview [GbX I-Trac™ Backplane Connector System](#)
Product Name GbX I-Trac™
UPC 822350885188

Physical

Circuits (Loaded) 84
Circuits (maximum) 84
Color - Resin Black
Durability (mating cycles max) 200
First Mate / Last Break No
Flammability 94V-0
Guide to Mating Part No
Keying to Mating Part None
Material - Metal High Performance Alloy (HPA)
Material - Plating Mating Gold
Material - Plating Termination Tin
Material - Resin High Temperature Thermoplastic
Net Weight 9.344/g
Number of Columns 6
Number of Pairs 4, Open Pin Field
Number of Rows 7
Orientation Right Angle
PC Tail Length 2.00mm
PCB Locator No
PCB Retention None
PCB Thickness - Recommended 1.60mm
Packaging Type Tray
Pitch - Mating Interface 1.85mm, 3.70mm
Pitch - Termination Interface 1.00mm, 2.70mm
Plating min - Mating 0.762µm
Plating min - Termination 0.762µm
Polarized to PCB No
Stackable Yes
Surface Mount Compatible (SMC) Yes
Temperature Range - Operating -55°C to +80°C
Termination Interface: Style Through Hole - Compliant Pin

Electrical



Series image - Reference only

EU ELV

Not Relevant

EU RoHS

Compliant

REACH SVHC

Not Contained Per -
ED/30/2017 (7 July 2017)

Halogen-Free Status

Low-Halogen

Need more information on product environmental compliance?

Email productcompliance@molex.com
Please visit the [Contact Us](#) section for any non-product compliance questions.

China ROHS

ELV

RoHS Phthalates

Green Image

Not Relevant

Not Contained

China RoHS

Search Parts in this Series

[76020 Series](#)

Mates With

[76015](#) GbX I-Trac™ Vertical Header Module.
[76011](#) GbX I-Trac™ Right Angle Header Module

Use With

[78234](#) GbX I-Trac™ Right Angle Power Header.
[76153](#) Pirate Cannon Wide Guide Module

Current - Maximum per Contact	1.0A
Data Rate	12.0 Gbps
Real Signals (per 25mm)	48
Shield Type	N/A
Shielded	No
Voltage - Maximum	120V AC (RMS)/DC

Solder Process Data

Lead-freeProcess Capability	N/A
-----------------------------	-----

Material Info**Reference - Drawing Numbers**

Packaging Specification	PK-70873-607
Product Specification	PS-75710-999-001
Sales Drawing	SD-76020-001

This document was generated on 08/28/2017

PLEASE CHECK WWW.MOLEX.COM FOR LATEST PART INFORMATION