

»» Features



- 20A/25A general purpose Power Relays.
- SPDT, DPDT, TPDT contact configurations.
- DC & AC coils are both available.
- Optional for flange covers, tapped core w/anti-rotation tab, indicator lamp, push-to-test button, PCB terminals

»» Type List

Terminal style	Contact form	Enclosure style				
		Open type	Dust cover	Ears on cover	Antirotation-tab	Ears on top
Quick terminal	1A (SPNO)	735-1A	735-1A-C	735-1A-C1	735-1A-C2	735-1A-C3
	1B (SPNC)	735-1B	735-1B-C	735-1B-C1	735-1B-C2	735-1B-C3
	1C (SPDT)	735-1C	735-1C-C	735-1C-C1	735-1C-C2	735-1C-C3
	2A (DPNO)	735-2A	735-2A-C	735-2A-C1	735-2A-C2	735-2A-C3
	2B (DPNC)	735-2B	735-2B-C	735-2B-C1	735-2B-C2	735-2B-C3
	2C (DPDT)	735-2C	735-2C-C	735-2C-C1	735-2C-C2	735-2C-C3
	3A (TPNO)	735-3A	735-3A-C	735-3A-C1	735-3A-C2	735-3A-C3
	3B (TPNC)	735-3B	735-3B-C	735-3B-C1	735-3B-C2	735-3B-C3
	3C (TPDT)	735-3C	735-3C-C	735-3C-C1	735-3C-C2	735-3C-C3
PCB terminal	1A (SPNO)	-----	735-1A-C-T	-----	-----	-----
	1B (SPNC)	-----	735-1B-C-T	-----	-----	-----
	1C (SPDT)	-----	735-1C-C-T	-----	-----	-----
	2A (DPNO)	-----	735-2A-C-T	-----	-----	-----
	2B (DPNC)	-----	735-2B-C-T	-----	-----	-----
	2C (DPDT)	-----	735-2C-C-T	-----	-----	-----
	3A (TPNO)	-----	735-3A-C-T	-----	-----	-----
	3B (TPNC)	-----	735-3B-C-T	-----	-----	-----
	3C (TPDT)	-----	735-3C-C-T	-----	-----	-----

»» Ordering Information

735 - 2C - F - C1 - M
 1 2 3 4 5

- | | |
|---|--|
| 1. 735 -- Basic series designation

2. 1A -- Single pole normally open
1B -- Single pole normally closed
1C -- Single pole double throw
2A -- Double pole normally open
2B -- Double pole normally closed | 2C -- Double pole double throw
3A -- Three pole normally open
3B -- Three pole normally closed
3C -- Three pole double throw

3. Blank -- Standard type
F -- Class F |
|---|--|

- | | | | |
|----------|---|----------|------------------------------------|
| 4. Blank | -- Open type | 5. Blank | -- No special feature |
| C | -- With cover | M | -- With manual operator |
| C1 | -- With mounting ears on cover | T | -- Printed circuit board terminals |
| C2 | -- With accessible mounting hole with anti-rotation tab | L | -- Pilot lamp |
| C3 | -- Mounting ears on top of cover | | |

»» Contact Rating

Resistive load	1A, 1B, 1C, 2A, 2B, 2C	3A, 3B, 3C
	20A 240VAC, 15A 28VDC	20A 120VAC, 15A 240VAC/28VDC

»» Coil Rating (DC)

Rated voltage (V)	Rated current $\pm 10\%$ at 23 °C (mA)	Coil resistance $\pm 10\%$ at 23 °C (Ω)	Max. continuous voltage at 50 °C	Pick up voltage(Max) at 23 °C	Drop out voltage(Min) at 23 °C	Power consumption at rated voltage
SP DP	6	188	160 % of rated voltage	80 % of rated voltage	10 % of rated voltage	approx. 1.2W
	12	100				
	24	51				
	48	27				
	110	11				
	125	12.5				
TP	6	250	160 % of rated voltage	80 % of rated voltage	10 % of rated voltage	approx. 1.5W
	12	125				
	24	63				
	48	31				
	110	11.5				
	125	13				

»» Coil Rating (AC)

Rated voltage (V)	Coil resistance $\pm 10\%$ at 23 °C (Ω)	Max. continuous voltage at 50 °C	Pick up voltage(Max) at 23 °C	Drop out voltage(Min) at 23 °C	Power consumption at rated voltage	
SP DP	6	4.2	130 % of rated voltage	85 % of rated voltage	30 % of rated voltage	approx. 3.0VA
	12	18				
	24	72				
	110	1580				
	120	1700				
	220	5850				
	240	7200				

Rated voltage (V)	Coil resistance $\pm 10\%$ at 23 °C (Ω)	Max. continuous voltage at 50 °C	Pick up voltage(Max) at 23 °C	Drop out voltage(Min) at 23 °C	Power consumption at rated voltage	
TP	6	3.9	130 % of rated voltage	85 % of rated voltage	30 % of rated voltage	approx. 3.4VA
	12	14.5				
	24	64				
	110	1450				
	120	1540				
	220	5850				
	240	6750				

»» Specification

Contact material	AgCdO / AgSnO alloy	
Contact resistance ⁽¹⁾	50 m Ω Max.	
Operate time ⁽¹⁾	25 ms Max.	
Release time ⁽¹⁾	20 ms Max.	
Insulation resistance ⁽¹⁾	1000 M Ω Min. (DC 500V)	
Dielectric strength ⁽¹⁾	Between open contact	: AC 1000V , 50/60Hz 1 min.
	Between contact and coil	: AC 1600V , 50/60Hz 1 min.
	Between contact circuits	: AC 1600V , 50/60Hz 1 min.
Vibration resistance	Operating extremes	10~55Hz , amplitude 2.0 mm
	Damage limits	10~55Hz , amplitude 2.0 mm
Shock resistance	Operating extremes	10G
	Damage limits	100G
Life expectancy	Mechanical	10,000,000 operations (frequency 18,000 operations/hr)
	Electrical	100,000 operations (frequency 1,200 operations/hr)
Operating ambient temperature	-30~+50 °C (no freezing)	
Weight	Approx. 80 g	

Note : (1) initial value

»» Safety Approval

Certified	UL	CSA	FIMKO
File No.	E88991	LR90143	14426

»» Safety Approval Rating (FIMKO)

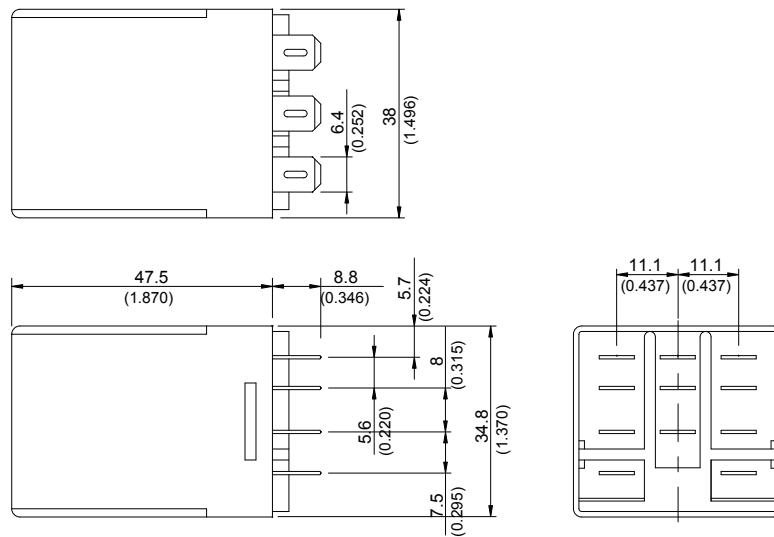
1A, 1B, 1C	2A, 2B, 2C	3A, 3B, 3C
25A 250VAC	25A 250VAC	20A 250VAC

»» Safety Approval Rating(UL 、CSA)

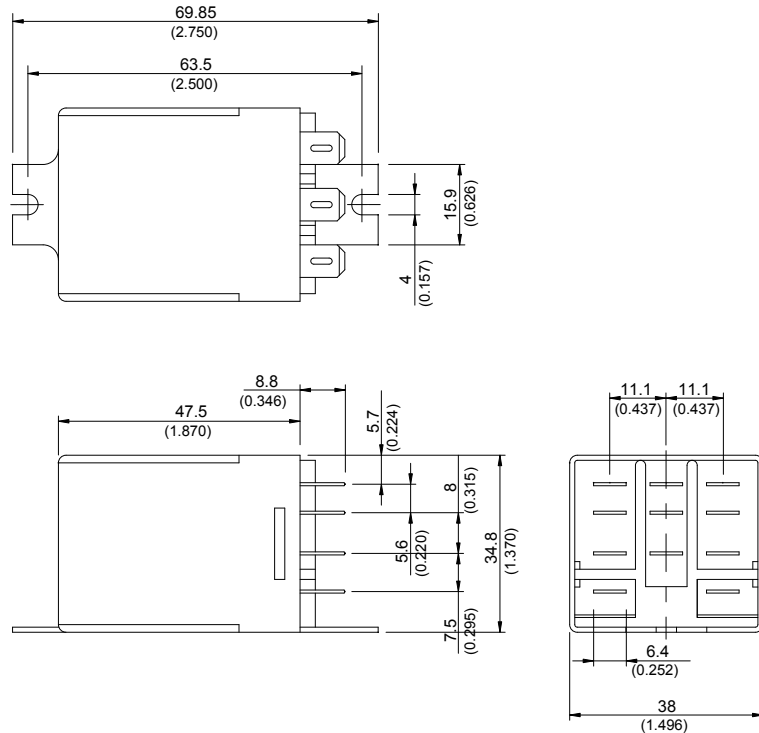
UL			CSA		
1A, 1B, 1C	2A, 2B, 2C	3A, 3B, 3C	1A, 1B, 1C	2A, 2B, 2C	3A, 3B, 3C
25A 28VDC	20A 28VDC	15A 28VDC	30A 277VAC	25A 277VAC	20A 277VAC
25A 277VAC	25A 277VAC	20A 277VAC	10A 600VAC	10A 600VAC	15A 28VDC
10A 600VAC	10A 600VAC	3/4HP 120VAC	25A 28VDC	20A 28VDC	3/4HP 120VAC
1.5HP 240VAC	1.5HP 240VAC	1HP 480VAC	1.5HP 240VAC	1.5HP 240VAC	1HP 240VAC
1HP 120VAC	1HP 120VAC		1HP 120VAC	1HP 120VAC	

»» Outline Dimensions

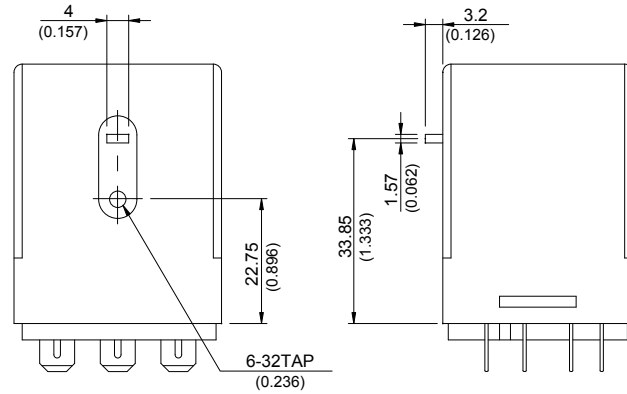
◆735 C



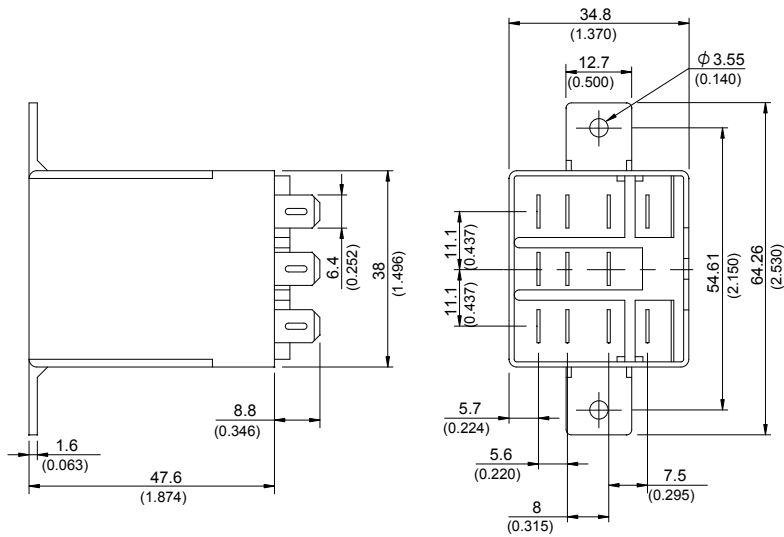
◆735 C1



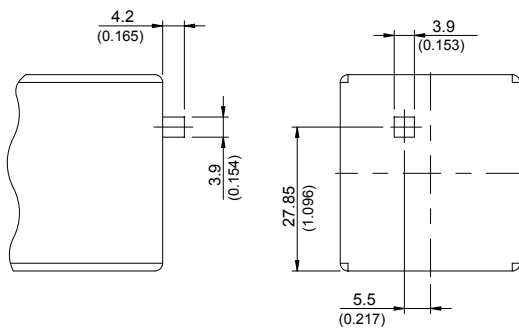
◆ 735 C2



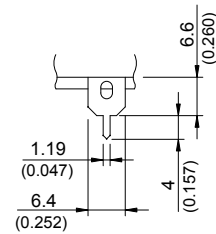
◆ 735 C3



◆ 735 M

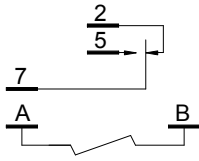


◆ 735 T

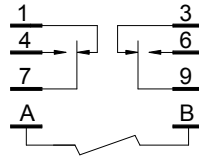


»» Wiring Diagram BOTTOM VIEW

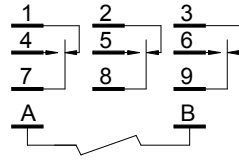
1C



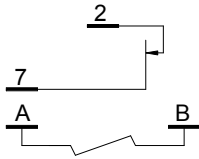
2C



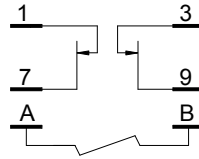
3C



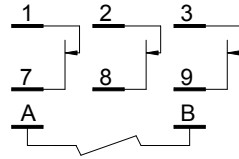
1B



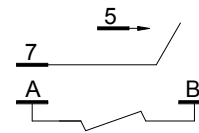
2B



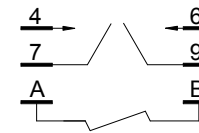
3B



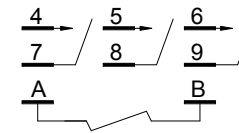
1A



2A



3A



»» Engineering Data

