

**PLEASE CHECK WWW.MOLEX.COM FOR LATEST PART INFORMATION**

**Part Number:** [0730993004](#)  
**Status:** **Active**  
**Overview:** CyClone Panel-to-Panel Connector System  
**Description:** 2.54mm CyClone Drawer Connector, Blind Mating, Hermaphroditic, 4 Circuits

**Documents:**

<a href="#">3D Model</a>	<a href="#">Packaging Specification PK-70873-1000 (PDF)</a>
<a href="#">Drawing (PDF)</a>	<a href="#">Test Summary TS-73099-0001-001 (PDF)</a>
<a href="#">Product Specification PS-73099-9999-001 (PDF)</a>	<a href="#">RoHS Certificate of Compliance (PDF)</a>

**Agency Certification**

CSA	LR19980
UL	E29179

**General**

Product Family	Accessories
Series	<a href="#">73099</a>
Comments	10,000 mating cycles max., 10,000 mating cycles max.
Component Type	Adapter, Drawer Connector
Overview	<a href="#">CyClone Panel-to-Panel Connector System</a>
Product Name	CyClone, SL
UPC	889056293853

**Physical**

Circuits (Loaded)	4
Circuits (maximum)	4
Color - Resin	Black
Flammability	94V-0
Gender	Hermaphroditic
Lock to Mating Part	Yes
Material - Metal	Beryllium Copper
Material - Plating Mating	Gold
Material - Plating Termination	Gold
Material - Resin	Polyester
Net Weight	5.413/g
Number of Rows	1
Packaging Type	Tray
Plating min - Mating	1.270µm
Plating min - Termination	0.381µm
Polarized to Mating Part	Yes
Temperature Range - Operating	-40° to +105°C

**Electrical**

Current - Maximum per Contact	2.0A
-------------------------------	------

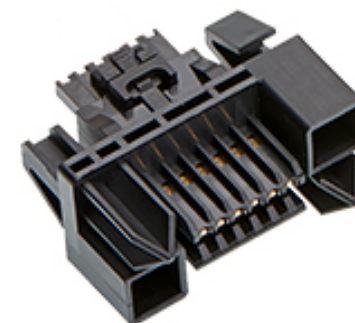
**Solder Process Data**

Lead-freeProcess Capability	N/A
-----------------------------	-----

**Material Info**

**Reference - Drawing Numbers**

Packaging Specification	PK-70873-1000
Product Specification	PS-73099-9999-001
Sales Drawing	SD-73099-3000-000
Test Summary	TS-73099-0001-001



*Series image - Reference only*

**EU ELV**

**Not Relevant**

**EU RoHS**

**Compliant**

**REACH SVHC**

Not Contained Per -  
ED/71/2019 (16 July  
2019)

**Halogen-Free**

**Status**

**Not Low-Halogen**

For more information, please visit [Contact US](#)

China ROHS

ELV

RoHS Phthalates

**China RoHS**

Green Image

Not Relevant

Not Contained

**Search Parts in this Series**

[73099 Series](#)

**Use With**

[70400](#) Version G Connector, [70066](#) Version G Housing, [70430](#) Version G Receptacle

**PLEASE CHECK [WWW.MOLEX.COM](http://WWW.MOLEX.COM) FOR LATEST PART INFORMATION**