

M 12 Field Wireable Connectors

Application Advantage

- Shielded design

Technical Data

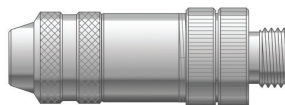
Temperature Range: Max. 85°C

Nominal Voltage: up to 60V

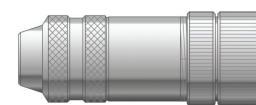
Nominal Current: up to 4A

Protection: IP67

Male



Female



Part Number	Number of Positions	Screw Connection	Max. Conductor Cross-section Size	Cable Diameter (mm)		Nominal Current
				Min.	Max.	
Male M 12 Straight Connector, Screw Connection						
C5E201C	8	PG 9	18 AWG	6	8	4A
Female M 12 Straight Connector, Screw Connection						
C5E200C	8	PG 9	18 AWG	6	8	4A

M 12 CAT.6A Field Wireable Connectors

Technical Data

Temperature Range: -40°C to +85°C

Nominal Voltage: 48V

Nominal Current: 0.5A

Contact Resistance: 100 mΩ

Application Advantage

- Easy on-site assembly
- For 10 Gbit/sec data transmission acc. to CAT.6A
- Can be used for Power over Ethernet applications
- Robust and vibration resistant



Approvals



Part Number	Number of Positions	Coding	Conductor Size		Cable Outer Diameter	
			Stranded	Solid	(in)	(mm)
Male M 12 Straight Connector, Fast Connect						
21700602	8	X	27 - 22 AWG (7 wire)	24 - 22 AWG	0.197 - 0.382	5.0 - 9.7

M 12 Field Wireable Connectors for PROFINET®

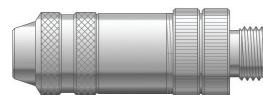
Technical Data

Temperature Range: -40°C to +85°C

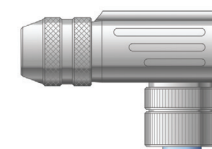
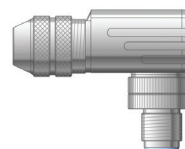
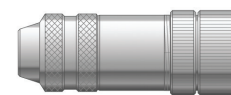
Nominal Voltage: 250V

Nominal Current: 4A

Male



Female

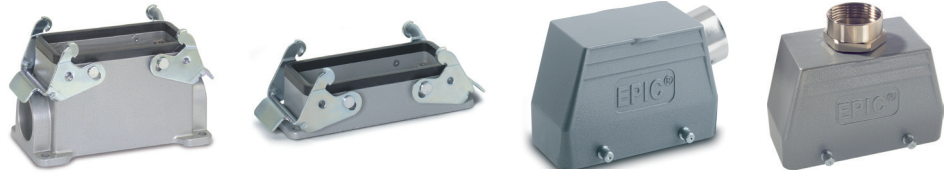


Part Number	Description	Number of Positions	Coding	Screw Connection
Male M 12 Connectors, Fast Connect				
C5E203C	Male Straight	4	D	PG 9
C5E205C	Male 90°	4	D	PG 9
Female M 12 Connectors, Fast Connect				
C5E202C	Female Straight	4	D	PG 9
C5E204C	Female 90°	4	D	PG 9

PROFINET® is a registered trademark of the PNO (PROFIBUS User Organization). If not otherwise specified, all values relating to the product are nominal values. Photographs are not to scale and are not true representations of the products in question. For current information go to our website.

Quick Select Summary: Housings

EPIC® HB Series Housings with Double Levers on Base



Description	PG	NPT	EPIC® HB Series Rectangular Connectors				Complete with a PG SKINTOP® Cable Gland			
			HB 10	HB 16	HB 24	HB 32	Gray	Black	Metal	MS-SC
Top Entry Hood with Double Lever Bolts										
16	1/2"		100400	—	—	—	53015040	53015340	52015740	53112240
21	3/4"		100401	100800	101210	101330	53015050	53015350	52015750	53112250
29	1"		—	100900	101110	101340	53015060	53015360	52015760	53112260
36	1 1/4"		—	—	—	—	53015070	53015370	52015765	53112270
Top Entry High Profile Hood with Double Lever Bolts										
21	3/4"		700504	701002	701504	—	53015050	53015350	52015750	53112250
29	1"		700506	701004	701506	—	53015060	53015360	52015760	53112260
Side Entry Hood with Double Lever Bolts										
16	1/2"		100420	—	—	—	53015040	53015340	52015740	53112240
21	3/4"		100421C0	100820	101130	101350	53015050	53015350	52015750	53112250
29	1"		—	100920	101230	101360	53015060	53015360	52015760	53112260
Side Entry High Profile Hood with Double Lever Bolts										
21	3/4"		700524	701022	701524	—	53015050	53015350	52015750	53112250
29	1"		700526	701024	701526	—	53015060	53015360	52015760	53112260
Panel Mount Base with Double Levers										
—	—		100320C0	100720C0	101020C0	101320C0	—	—	—	—
Surface Mount Base with Double Levers										
2 entries	16	1/2"	100350	—	—	—	53015040	53015340	52015740	53112240
1 entry	16	1/2"	100340	—	—	—	53015040	53015340	52015740	53112240
2 entries	21	3/4"	—	100750	101050	—	53015050	53015350	52015750	53112250
1 entry	21	3/4"	—	100740	101040	—	53015050	53015350	52015750	53112250
2 entries	29	1"	—	—	—	101380	53015060	53015360	52015760	53112260
1 entry	29	1"	—	—	—	101370	53015060	53015360	52015760	53112260
High Profile Surface Mount Base with Double Levers										
2 entries	21	3/4"	700362	700862	701362	—	53015050	53015350	52015750	53112250
1 entry	21	3/4"	700352	700852	701352	—	53015050	53015350	52015750	53112250
2 entries	29	1"	700364	700864	701364	—	53015060	53015360	52015760	53112260
1 entry	29	1"	700354	700854	701354	—	53015060	53015360	52015760	53112260
Cable Coupler Hood with Double Levers										
16	1/2"		100460	—	—	—	53015040	53015340	52015740	53112240
21	3/4"		700402	100860	101270	101390	53015050	53015350	52015750	53112250
29	1"		—	100960C0	101170	101395	53015060	53015360	52015760	53112260
High Profile Cable Coupler Hood with Double Levers										
21	3/4"		700404R	—	701404R	—	53015050	53015350	52015750	53112250
29	1"		700406	700904	701406	—	53015060	53015360	52015760	53112260

For NPT parts: add "NP" to the end of 6-digit part numbers or replace the last two digits of an 8-digit part number with "NP". Metric parts are also available.

EPIC® connectors mate with SKINTOP® glands without locknuts. Use of tapered (NPT) threads is not recommended with EPIC® rectangular connectors, unless a thread sealant is used.

EPIC® HA 3/4 Rectangular Connectors with Single Lever on Base

Complete with a SKINTOP® Cable Gland

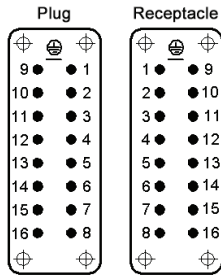


PG	Gray	Black	Metal	MS-SC
11	53015020	53015320	52015720	53112220

Material	PG	NPT	Rectangular Hoods				Surface Mount Bases & Cable Coupler Hoods				Panel Mount Bases		
			PG with cable gland		NPT without cable gland		PG with cable gland		NPT without cable gland		Standard	Angled	With Cover
			Top Entry	Side Entry	Top Entry	Side Entry	Base	Coupler	Base	Coupler			
Zinc Die Cast	11	1/2"	10426500	10427500	105121NP	105123NP	10424500	10429500	105127NP	105129NP	10422500	10423500	44429015
Black Plastic	11	1/2"	10426700	10620600	104255NP	104273NP	—	10620300	—	104292NP	10422200	10423100	—
Gray Plastic	11	1/2"	10426400	10427100	104260NP	104270NP	10424200	10429100	104240NP	104290NP	10422000	10423000	—

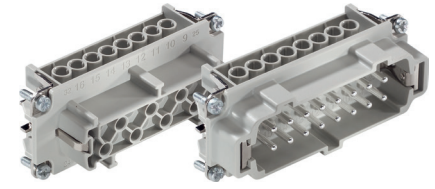
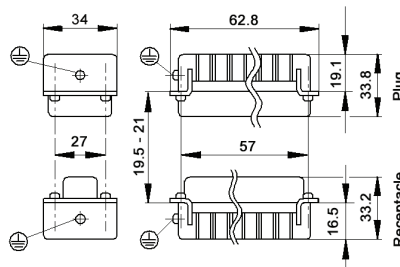
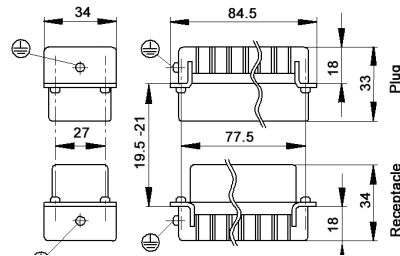
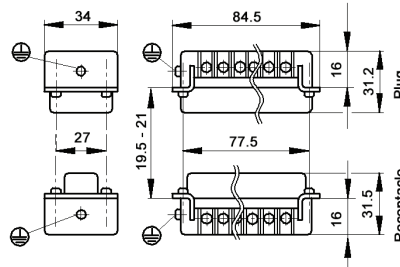
EPIC® HBE 16 Inserts
Screw-Terminated

view from cable side

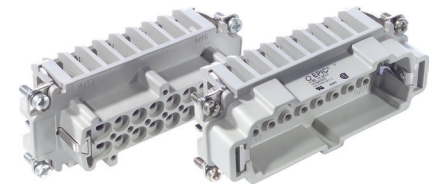


crimp contacts sold separately, see below

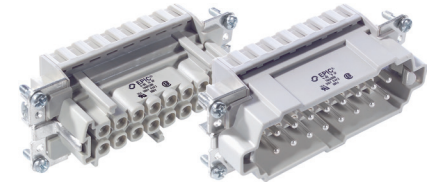
all dimensions are in mm.



Crimp-Terminated



Screwless Cage Clamp



Approvals: Screw & Crimp



Approvals: Cage Clamp



Compatible Housing



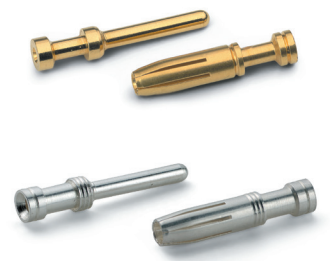
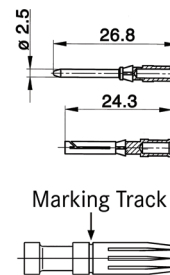
EPIC® HB 16
page 381

Description	Plug	Receptacle
Screw-Terminated with Wire Protection	10194000	10195000
Screw-Terminated without Wire Protection	10194100	10195100
Crimp-Terminated: Machined Contacts	10184000	10185000
Screwless Cage Clamp	10400200	10401200

Machined Contacts
2.5 mm Diameter

Contact Size mm ²	AWG	Stripping Length (mm)		# of Marking Tracks	Silver Contacts		Gold Contacts	
		Pin	Socket		Pin	Socket	Pin	Socket
0.5	20	7.4	7.3	—	11190000	11195000	11192000	11197000
0.75 - 1.0	18	7.4	7.3	1	11190100	11195100	11192100	11197100
1.5	16	7.4	7.3	2	11190200	11195200	11192200	11197200
2.5	14	7.4	7.3	3	11190300	11195300	—	—
4.0	12	7.4	7.3	—	11190400	11195400	—	—

part number = 1 contact, sold in bags of 100



Marking Track

For removal of contacts, use a slotted screwdriver; no special tool is necessary.

Complete the Installation



Crimp Tool:
11147000



Crimp Dies:
11147100

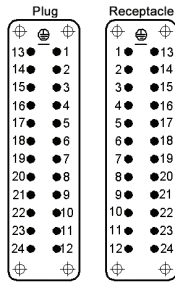


Locator:
11147200

Photographs are not to scale and are not true representations of the products in question. If not otherwise specified, all values relating to the product are nominal values. For current information go to our website.

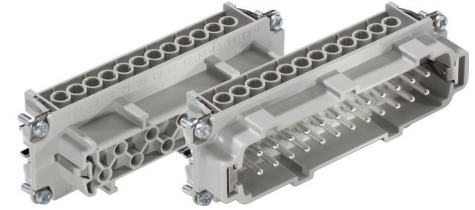
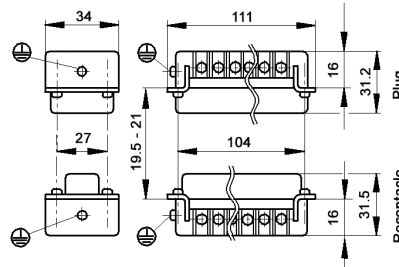
EPIC® HBE 24 Inserts
Screw-Terminated

view from cable side

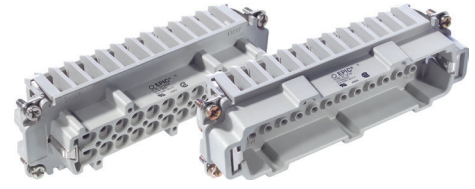
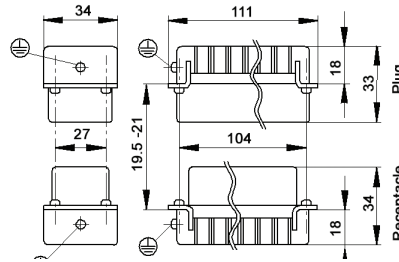


crimp contacts sold separately, see below

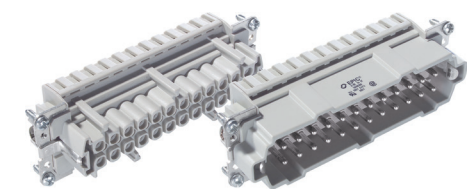
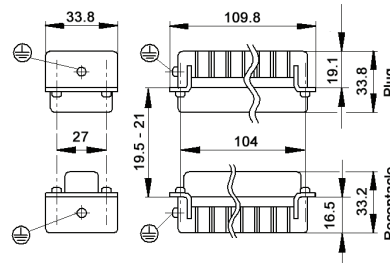
all dimensions are in mm.



Crimp-Terminated



Screwless Cage Clamp



Approvals: Screw & Crimp



Approvals: Cage Clamp



Compatible Housing

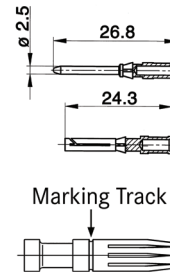
EPIC® HB 24
page 387

Description	Plug	Receptacle
Screw-Terminated with Wire Protection	10196000	10197000
Screw-Terminated without Wire Protection	10196100	10197100
Crimp-Terminated: Machined Contacts	10186000	10187000
Screwless Cage Clamp	10400300	10401300

Machined Contacts
2.5 mm Diameter

Contact Size mm ²	AWG	Stripping Length (mm)		# of Marking Tracks	Silver Contacts		Gold Contacts	
		Pin	Socket		Pin	Socket	Pin	Socket
0.5	20	7.4	7.3	—	11190000	11195000	11192000	11197000
0.75 - 1.0	18	7.4	7.3	1	11190100	11195100	11192100	11197100
1.5	16	7.4	7.3	2	11190200	11195200	11192200	11197200
2.5	14	7.4	7.3	3	11190300	11195300	—	—
4.0	12	7.4	7.3	—	11190400	11195400	—	—

part number = 1 contact, sold in bags of 100



Complete the Installation

Crimp Tool: 11147000

Crimp Dies: 11147100

Locator: 11147200

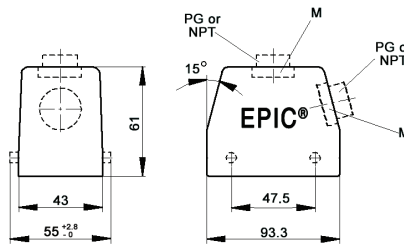
Marking Track

For removal of contacts, use a slotted screwdriver; no special tool is necessary.

Photographs are not to scale and are not true representations of the products in question. If not otherwise specified, all values relating to the product are nominal values. For current information go to our website.

EPIC® HB 16 Standard Hoods

Double Lever Bolts



all dimensions are in mm.

Technical Data

Specifications:	DIN 43652	IP Protection Class:	NEMA 4, NEMA 12, IP65
Temperature Range:	-40°C to + 125°C	Material:	Powder-coated aluminum alloy

PG	Size of Entry		PG	Part Number		Complete the Installation: SKINTOP® Strain Relief			
	NPT	Metric		NPT	Metric	PG Plastic	PG Metal	Metric Plastic	Metric Metal
Top Entry									
21	3/4"	25	100800	100800NP	19080000*	53015050	52015750	53111030	53112030
—	—	25x2	—	—	19080500	—	—	53111030	53112030
29	1"	32	100900	100900NP	19090000*	53015060	52015760	53111040	53112040
Side Entry									
21	3/4"	25	100820	100820NP	19082000	53015050	52015750	53111030	53112030
29	1"	32	100920	100920NP	19092000	53015060	52015760	53111040	53112040

* Metric top-entry hoods do not come with a neck.

Approvals

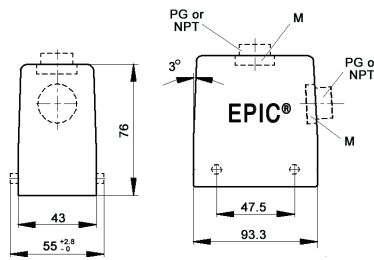


Complete the Installation

HB Dust Covers
page 419

EPIC® HB 16 High Profile Hoods

Double Lever Bolts



all dimensions are in mm.

Technical Data

Specifications:	DIN 43652	IP Protection Class:	NEMA 4, NEMA 12, IP65
Temperature Range:	-40°C to + 125°C	Material:	Powder-coated aluminum alloy

PG	Size of Entry		PG	Part Number		Complete the Installation: SKINTOP® Strain Relief			
	NPT	Metric		NPT	Metric*	PG Plastic	PG Metal	Metric Plastic	Metric Metal
Top Entry									
21	3/4"	25	701002	701002NP	79100200	53015050	52015750	53111030	53112030
—	—	25x2	—	—	44422018	—	—	53111030	53112030
29	1"	32	701004R	701004NP	79100400	53015060	52015760	53111040	53112040
—	—	32x2	—	—	79128600	—	—	53111040	53112040
—	—	40	—	—	79100800	—	—	53111050	53112050
Side Entry									
21	3/4"	25	701022	701022NP	79102200	53015050	52015750	53111030	53112030
29	1"	32	701024	701024NP	79102400	53015060	52015760	53111040	53112040
—	—	40	—	—	79102800	—	—	53111050	53112050

* Metric hoods do not come with a neck.

Approvals



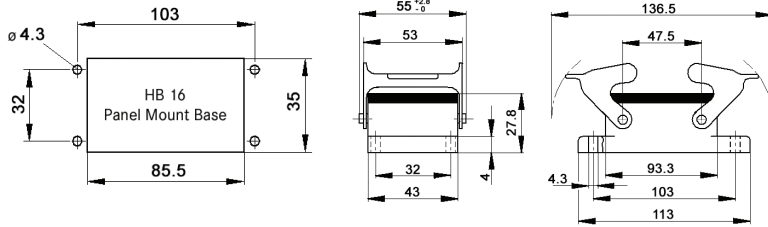
Complete the Installation

HB Dust Covers
page 419

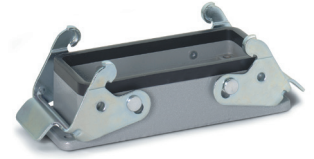
Photographs are not to scale and are not true representations of the products in question.

If not otherwise specified, all values relating to the product are nominal values. For current information go to our website.

EPIC® HB 16 Panel Mount Bases
Double Levers



all dimensions are in mm.



Technical Data

Specifications:	DIN 43652	IP Protection Class:	NEMA 4, NEMA 12, IP65
Temperature Range:	-40°C to + 125°C	Material:	Powder-coated aluminum alloy

Description	Part Number
Panel Mount Base	100720C0

Approvals

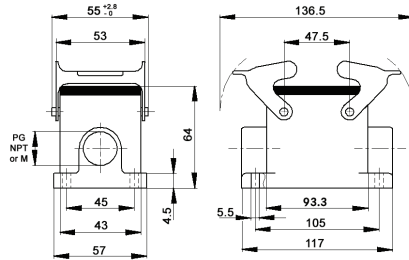


Complete the Installation

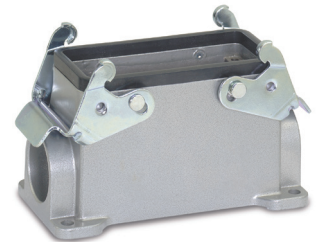


HB Dust Covers
page 419

EPIC® HB 16 Surface Mount Bases
Double Levers



all dimensions are in mm.



Technical Data

Specifications:	DIN 43652	IP Protection Class:	NEMA 4, NEMA 12, IP65
Temperature Range:	-40°C to + 125°C	Material:	Powder-coated aluminum alloy

PG	Size of Entry		PG	Part Number		Complete the Installation: SKINTOP® Strain Relief			
	NPT	Metric		NPT	Metric	PG Plastic	PG Metal	Metric Plastic	Metric Metal
2 Entries									
21	3/4"	25	100750	100750NP	19075000	53015050	52015750	53111030	53112030
1 Entry									
21	3/4"	25	100740	100740NP	19074000	53015050	52015750	53111040	53112030

Approvals



Complete the Installation

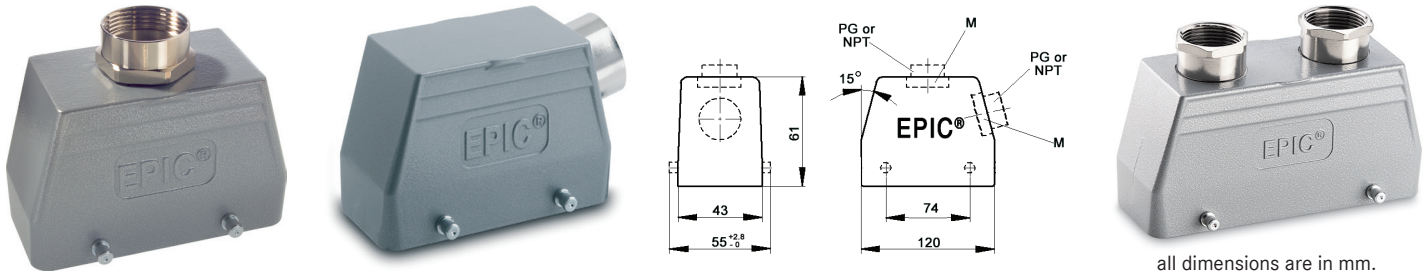


HB Dust Covers
page 419

Photographs are not to scale and are not true representations of the products in question. If not otherwise specified, all values relating to the product are nominal values. For current information go to our website.

EPIC® HB 24 Standard Hoods

Double Lever Bolts



all dimensions are in mm.

Technical Data

Specifications:	DIN 43652	IP Protection Class:	NEMA 4, NEMA 12, IP65
Temperature Range:	-40°C to + 125°C	Material:	Powder-coated aluminum alloy

PG	Size of Entry		PG	Part Number		Complete the Installation: SKINTOP® Strain Relief			
	NPT	Metric		NPT	Metric	PG Plastic	PG Metal	Metric Plastic	Metric Metal
Top Entry									
21	3/4"	25	101210	101210NP	19121000*	53015050	52015750	53111030	53112030
—	—	25x2	—	—	44422019	—	—	53111030	53112030
29	1"	32	101110	101110NP	19111000*	53015060	52015760	53111040	53112040
—	—	32x2	—	—	44422020	—	—	53111040	53112040
Side Entry									
21	3/4"	25	101130	101130NP	19113000	53015050	52015750	53111030	53112030
29	1"	32	101230	101230NP	19123000	53015060	52015760	53111040	53112040

* Metric top-entry hoods do not come with a neck.

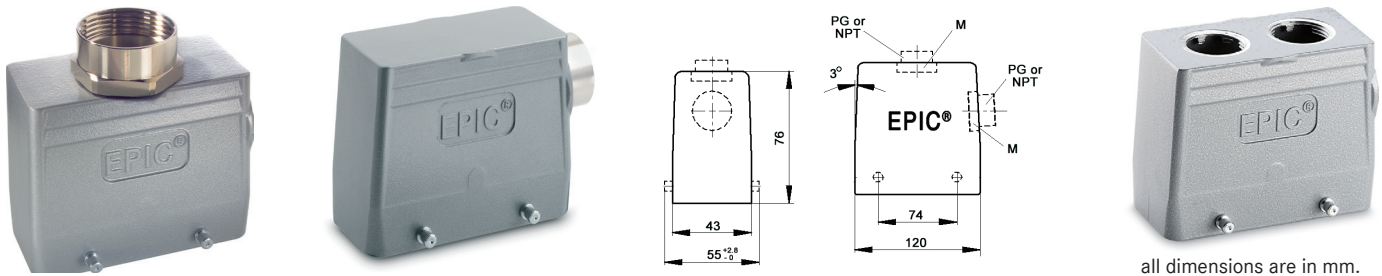
Approvals

Complete the Installation

HB Dust Covers page 419

EPIC® HB 24 High Profile Hoods

Double Lever Bolts



all dimensions are in mm.

Technical Data

Specifications:	DIN 43652	IP Protection Class:	NEMA 4, NEMA 12, IP65
Temperature Range:	-40°C to + 125°C	Material:	Powder-coated aluminum alloy

PG	Size of Entry		PG	Part Number		Complete the Installation: SKINTOP® Strain Relief			
	NPT	Metric		NPT	Metric*	PG Plastic	PG Metal	Metric Plastic	Metric Metal
Top Entry									
21	3/4"	25	701504	701504NP	79150400	53015050	52015750	53111030	53112030
—	—	25x2	—	—	44422021	—	—	53111030	53112030
29	1"	32	701506	701506NP	79150600	53015060	52015760	53111040	53112040
—	—	32x2	—	—	79178500	—	—	53111040	53112040
—	—	40	—	—	79150800	—	—	53111050	53112050
Side Entry									
21	3/4"	25	701524	701524NP	79152400	53015050	52015750	53111030	53112030
29	1"	32	701526	701526NP	79152600	53015060	52015760	53111040	53112040
—	—	40	—	—	79152800	—	—	53111050	53112050

* Metric hoods do not come with a neck.

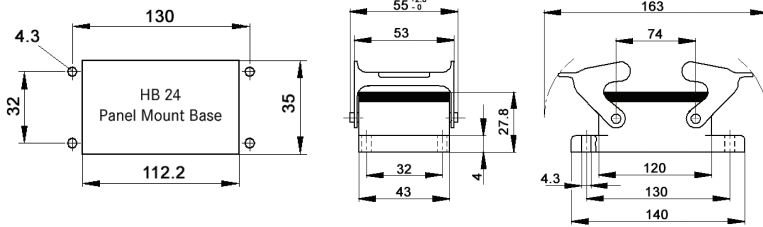
Approvals

Complete the Installation

HB Dust Covers page 419

EPIC® HB 24 Panel Mount Bases

Double Levers



all dimensions are in mm.



Technical Data

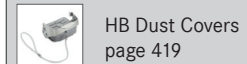
Specifications:	DIN 43652	IP Protection Class:	NEMA 4, NEMA 12, IP65
Temperature Range:	-40°C to + 125°C	Material:	Powder-coated aluminum alloy

Description	Part Number
Panel Mount Base	101020C0

Approvals

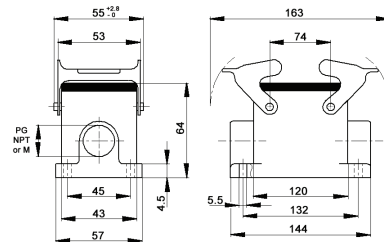


Complete the Installation

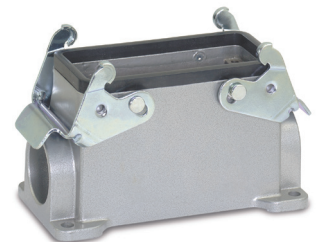


EPIC® HB 24 Surface Mount Bases

Double Levers



all dimensions are in mm.



Technical Data

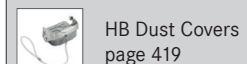
Specifications:	DIN 43652	IP Protection Class:	NEMA 4, NEMA 12, IP65
Temperature Range:	-40°C to + 125°C	Material:	Powder-coated aluminum alloy

PG	Size of Entry		PG	Part Number		Complete the Installation: SKINTOP® Strain Relief			
	NPT	Metric		NPT	Metric	PG Plastic	PG Metal	Metric Plastic	Metric Metal
2 Entries									
21	3/4"	25	101050	101050NP	19105000	53015050	52015750	53111030	53112030
1 Entry									
21	3/4"	25	101040	101040NP	19104000	53015050	52015750	53111040	53112030

Approvals



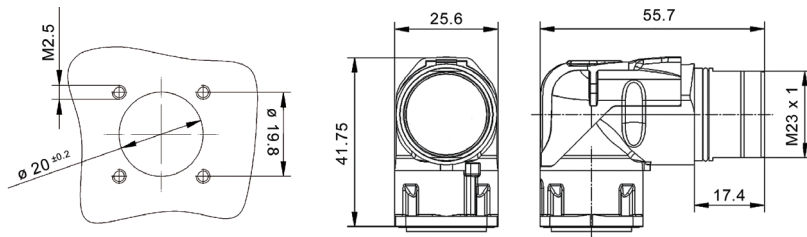
Complete the Installation



Photographs are not to scale and are not true representations of the products in question. If not otherwise specified, all values relating to the product are nominal values. For current information go to our website.

EPIC® POWER LS1 Connector Style A3

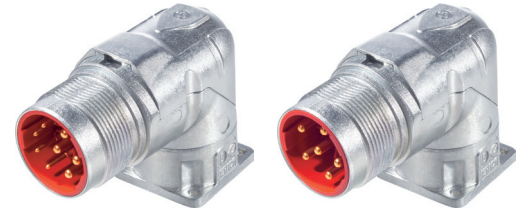
Angled Rotatable Panel Mount Inlet with Male Contacts






all dimensions are in mm.

3+PE+4

5+PE



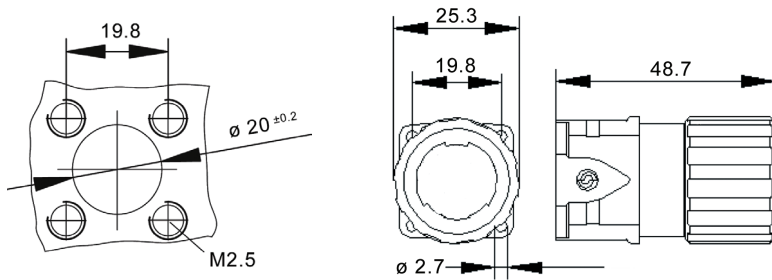
Complete the Installation

	Crimp Tool: 11148000		Locator: 11148300		Removal Tool: 1 mm contacts: 75017400 2 mm contacts: 75017500
---	-------------------------	---	----------------------	---	---

Contact Configuration	Part Number
5+PE	24420058
3+PE+4	24420056

EPIC® POWER LS1 Connector Style A6

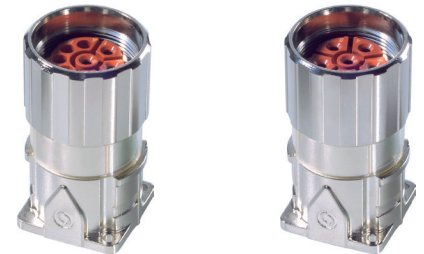
Panel Mount Receptacle with Female Contacts





all dimensions are in mm.

3+PE+4

5+PE



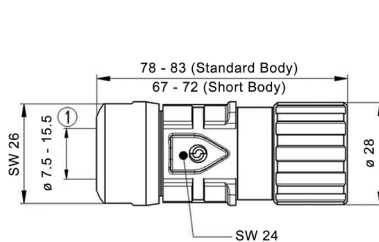
Complete the Installation

	Crimp Tool: 11148000		Locator: 11148300
---	-------------------------	---	----------------------

Contact Configuration	Part Number
5+PE	76083000
3+PE+4	76084000

EPIC® POWER LS1 Connector Style D6

Cable Connector with Female Contacts



all dimensions are in mm.

Short Body
3+PE+4



Short Body
5+PE

Standard Body
3+PE+4

Standard Body
5+PE



Complete the Installation

	Crimp Tool: 11148000		Locator: 11148300
---	-------------------------	---	----------------------

Contact Configuration	Standard Body		Short Body
	20 - 14 AWG	12 AWG	
5+PE	76123000	44420091	76123100
3+PE+4	76124000	44420089	76124100

Photographs are not to scale and are not true representations of the products in question. If not otherwise specified, all values relating to the product are nominal values. For current information go to our website.

30A Pin & Sleeve Connectors

Male plugs mate with female connectors, panel-mounted receptacles, and switched-socket outlets. Male inlets mate with female connectors. Dimensional drawings can be found on the indicated pages and are the same for North American and international standards. Circuit wiring diagrams can be found on page 484. Additional configurations are available: see www.lappusa.com for a complete listing.

IP44

IP67

Male Plugs & Inlets

Dimensional Data

Plugs: page 467
Inlets: page 468



Color Code	Voltage / Current Rating	Number of Wires	Number of Poles	Ground-Clock Position	IP67	IP44	IP67
30A					Male Plugs		Male Inlets
Yellow	125	3	1+N+PE	4	477206FX	700224FX	476206FX
Blue	250	3	2+PE	6	477306FX	700226FX	476306FX
Light Blue	3Ø 250	4	3+PE	9	477316FX	700239FX	476316FX
Red	3Ø 480	4	3+PE	7	477516FX	700237FX	476516FX
Dark Blue	3Ø Y 120/208	5	3+N+PE	9	477326FX	700249FX	476326FX

Female Connectors & Receptacles

Dimensional Data

Connectors: page 468
Receptacles: page 469

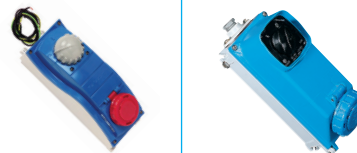


Color Code	Voltage / Current Rating	Number of Wires	Number of Poles	Ground-Clock Position	IP67	IP44	IP67	IP44	IP44
30A					Female Connectors		Female Receptacles		
Yellow	125	3	1+N+PE	4	473206FX	720224FX	471267FX	433211FX	471266FX
Blue	250	3	2+PE	6	473306FX	720226FX	471367FX	433222FX	471366FX
Light Blue	3Ø 250	4	3+PE	9	473316FX	720239FX	471377FX	443222FX	471376FX
Red	3Ø 480	4	3+PE	7	473516FX	720237FX	471577FX	443250FX	471576FX
Dark Blue	3Ø Y 120/208	5	3+N+PE	9	473326FX	720249FX	471387FX	453222FX	471386FX

Switched-Socket Outlets

Dimensional Data

page 470



Color Code	Voltage / Current Rating	Number of Wires	Number of Poles	Ground-Clock Position	with Fuse Holder IP66/67	Direct Connect IP67
30A					EPIC® ULYSSE	EPIC® ALUPRES
Yellow	125	3	1+N+PE	4	400224FX	460224FX
Blue	250	3	2+PE	6	400226FX	460226FX
Light Blue	3Ø 250	4	3+PE	9	400239FX	460239FX
Red	3Ø 480	4	3+PE	7	400237FX	460237FX
Dark Blue	3Ø Y 120/208	5	3+N+PE	9	400249FX	460249FX