

SOCKETS & ACCESSORIES

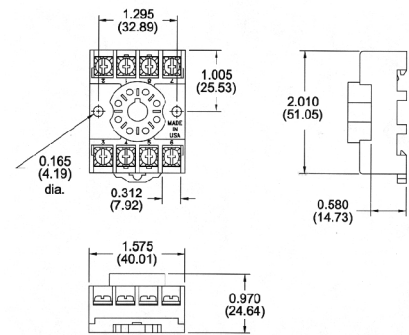
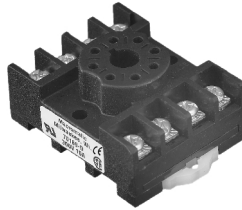
8 Pin Octal Socket-- Surface or DIN Rail-Mounted

10A @ 600V *
1 or 2 #12-22 AWG Wire
Pressure Wire Clamp Terminations



File #E169693 File #LR701114

Product Number 70169-D



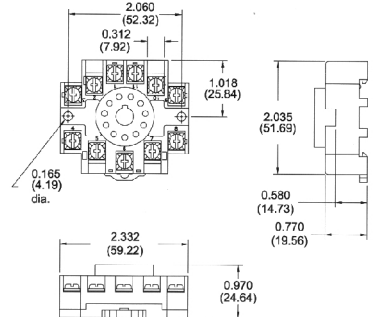
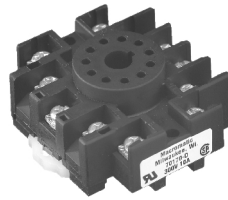
11 Pin Octal Socket-- Surface or DIN Rail-Mounted

10A @ 300V
1 or 2 #12-22 AWG Wire
Pressure Wire Clamp Terminations



File #E169693 File #LR701114

Product Number 70170-D



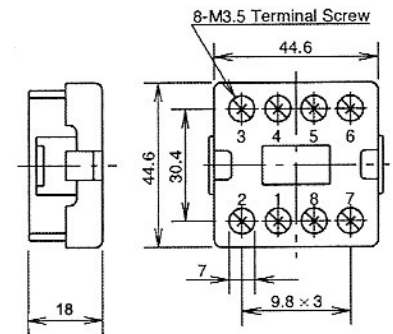
8 Pin Octal Socket-- Back-Mounted

10A @ 300V
Pressure Wire Clamp Terminations



File #E62437

Product Number SR6P-M08G



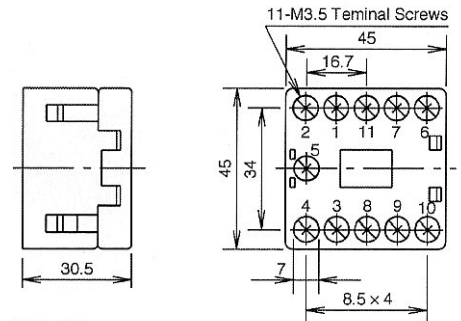
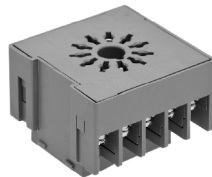
11 Pin Octal Socket-- Back-Mounted

10A @ 300V
Pressure Wire Clamp Terminations



File #E62437

Product Number SR6P-M11G



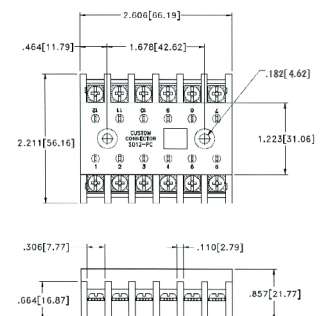
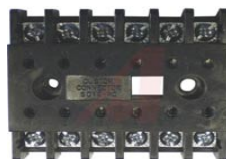
12 Pin Socket-- Surface-Mounted

10A @ 600V
#12-20 AWG Wire
Pressure Wire Clamp Terminations



File #E60008 File #LR29513

Product Number SD12-PC



NOTE: if a 12 Pin Socket is required for DIN-rail mounting, please contact Macromatic.

* Plug-in Three-Phase Monitor Relays require a 600V-rated socket when used on system voltages greater than 300V.

SOCKETS & ACCESSORIES

Hold Down Spring Product Number 70166

Can be used for:

- ◆ Panel-Mounted Sockets
- ◆ Sockets Mounted to 35mm DIN Track *

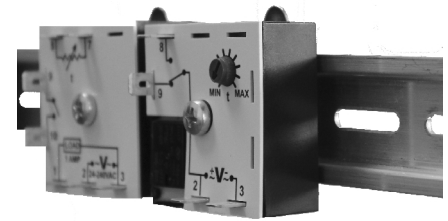
* Requires two machine screws with washers & nuts-- contact Macromatic or www.macromatic.com/70166 for more information.



DIN Rail Adaptor Kit Product Number 70500

Quick & Economical Way to Install Any THx Series 2" x 2" Encapsulated Time Delay Relays on 35mm DIN Track

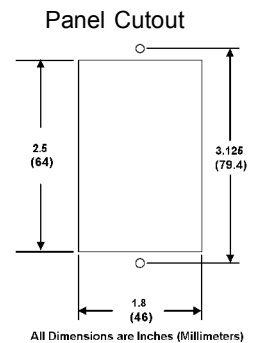
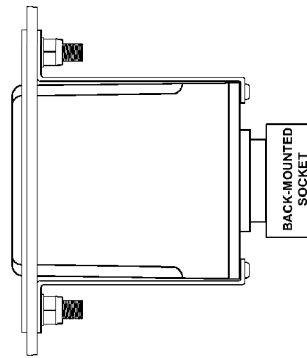
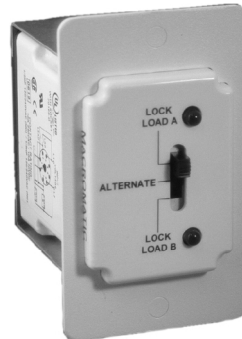
- ◆ Clip Comes with a Threaded Hole to Eliminate Need for a Washer & Nut
- ◆ All Mounting Hardware Included



Panel Mount Assembly For Panel Mounting Standard Plug-in Products Product Number 70400

This assembly provides a simple & economical method to mount plug-in products to the deadfront of an enclosure/panel:

- ◆ Sturdy Aluminum Construction
- ◆ Stainless Steel Studs
- ◆ All Mounting Hardware Included
- ◆ White Textured Painted Finish
- ◆ 2 3/16" W x 3 7/16" H



(Relay Not Included with Assembly-- Shown for Reference Only)

INDEX BY PRODUCT NUMBER

Product *	Page	Product *	Page	Product *	Page	Product *	Page	Product *	Page	Product *	Page
70166	81	ARP024A6	32	ATP024A1R	36	CMKP10A68	18	COKP01A68	19	COP10A62	19
70169-D	80	ARP024A6R	32	ATP024A7R	36	CMP01A22	18	COKP05A22	19	COP10A68	19
70170-D	80	ARP120A2	32	ATP120A1	36	CMP01A28	18	COKP05A28	19	CUH05Ayyy ***	16
70400	81	ARP120A2R	32	ATP120A1R	36	CMP01A62	18	COKP05A62	19	CUH20Ayyy ***	16
70500	81	ARP120A3	34	ATP120A7R	36	CMP01A68	18	COKP05A68	19	CUH50Ayyy ***	16
ARP012A2	32	ARP120A3R	34	CAH05Ayyy	16	CMP05A22	18	COKP10A22	19	CUP01A22	20
ARP012A2R	32	ARP120A5	34	CAH20Ayyy	16	CMP05A28	18	COKP10A28	19	CUP01A28	20
ARP012A3	34	ARP120A5R	34	CAH50Ayyy	16	CMP05A62	18	COKP10A62	19	CUP01A62	20
ARP012A3R	34	ARP120A6	32	CMKP01A22	18	CMP05A68	18	COKP10A68	19	CUP01A68	20
ARP012A5	34	ARP120A6R	32	CMKP01A28	18	CMP10A22	18	COP01A22	19	CUP05A22	20
ARP012A5R	34	ARP240A2	32	CMKP01A62	18	CMP10A28	18	COP01A28	19	CUP05A28	20
ARP012A6	32	ARP240A2R	32	CMKP01A68	18	CMP10A62	18	COP01A62	19	CUP05A62	20
ARP012A6R	32	ARP240A3	34	CMKP05A22	18	CMP10A68	18	COP01A68	19	CUP05A68	20
ARP024A2	32	ARP240A3R	34	CMKP05A28	18	COH05Ayyy	16	COP05A22	19	CUP10A22	20
ARP024A2R	32	ARP240A5	34	CMKP05A62	18	COH20Ayyy	16	COP05A28	19	CUP10A28	20
ARP024A3	34	ARP240A5R	34	CMKP05A68	18	COH50Ayyy	16	COP05A62	19	CUP10A62	20
ARP024A3R	34	ARP240A6	32	CMKP10A22	18	COKP01A22	19	COP05A68	19	CUP10A68	20
ARP024A5	34	ARP240A6R	32	CMKP10A28	18	COKP01A28	19	COP10A22	19		
ARP024A5R	34	ATP024A1	36	CMKP10A62	18	COKP01A62	19	COP10A28	19		

Continued on
Page 82

* The "-xx" suffix denotes the time range for time delay relays with adjustable time delay. Contact Macromatic for any product not listed.

*** The "-yyy" suffix denotes the input voltage, trip delay & sensing delay for CxH Series encapsulated current sensing relays.