

# MICRO SWITCH

FREEMONT ILLINOIS, U.S.A.  
A DIVISION OF HONEYWELL

FED. MFG. CODE 91929

# SWITCH - BASIC

CATALOG LISTING

## 6HM1-1

6HM1-1

M

DRAWING NUMBER

ISSUE

8

REPLACES

SR-10801

RELEASE NO.

CHECK

REVISIONS

A	CO 51776
	GRT 29 JUL 82
B	CO71228
	DAW 1 NOV 91
C	CO80788
	SAD 21 APR 95

CHECK

10 AUG 82

C E B

82

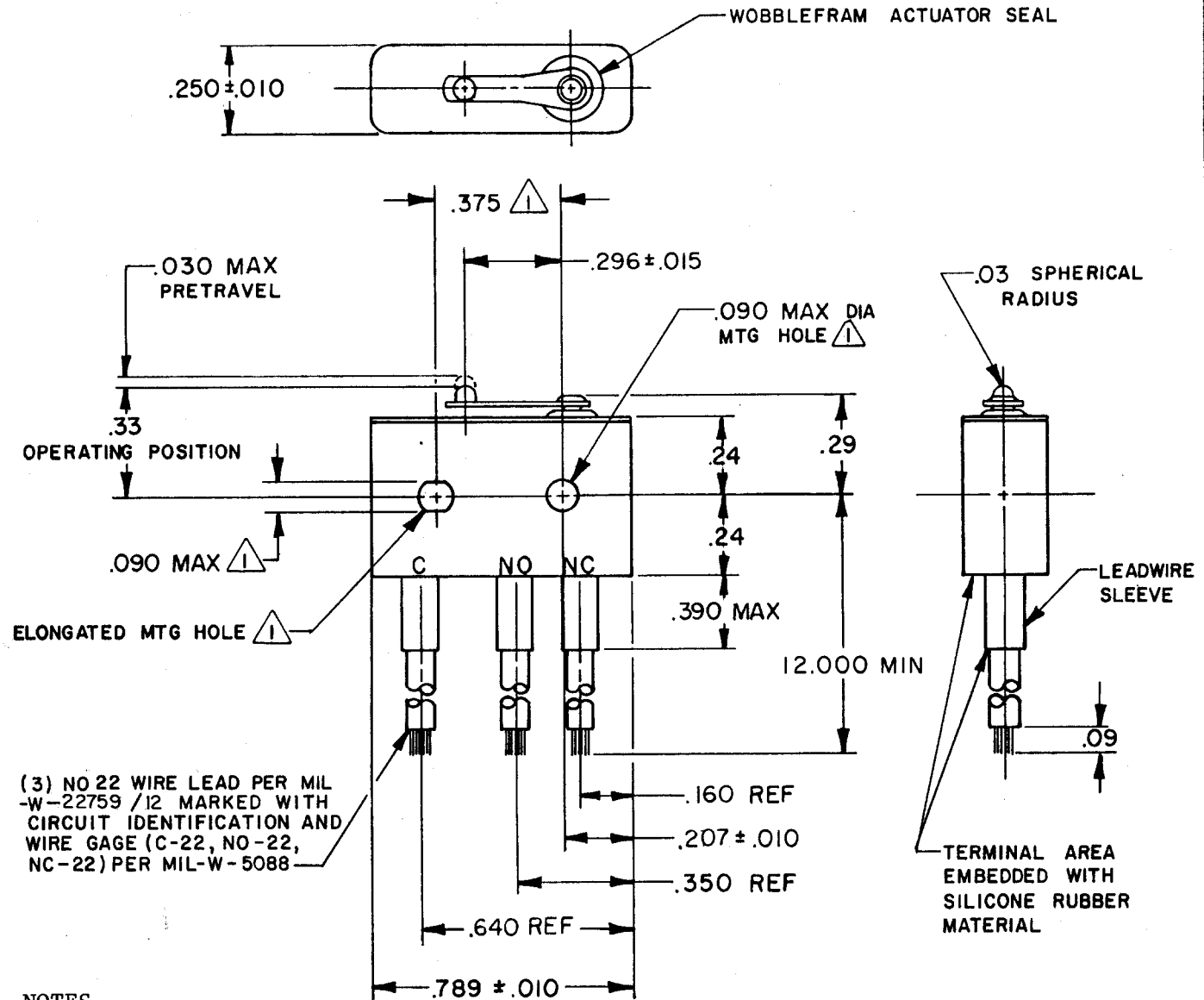
JUL 82

CHECK

C E B

82

JUL 82

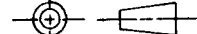


NOTES

- 1 MOUNTING HOLES WILL ACCEPT PINS OR SCREWS OF .087 MAX DIA ON .375 ± .002 CENTERS
- 2 - FOR USE IN TEMPERATURE RANGE -85°F TO +500°F (DOWN TO -300°F IF WIRE LEADS ARE NOT FLEXED)
- 3 - HERMETICALLY SEALED (METAL TO METAL, GLASS TO METAL)
- 4 - ALL EXPOSED PARTS ARE OF CORROSION RESISTANT MATERIALS
- 5 WEIGHT OF SWITCH ONLY IS 0.014 LB MAX. WEIGHT OF CONDUCTOR GROUP ONLY IS 0.013 LB MAX PER FOOT
- 6 - DO NOT APPLY MORE THAN 1 1/2 INCH LBS OF TORQUE WHEN TIGHTENING MOUNTING SCREWS

THIS DRAWING COVERS A PROPRIETARY ITEM AND IS THE PROPERTY OF MICRO SWITCH, A DIVISION OF HONEYWELL. THIS DRAWING IS NOT TO BE COPIED OR USED WITHOUT THE APPROVAL OF MICRO SWITCH.

THIRD ANGLE PROJECTION



CHARACTERISTICS

OPERATING FORCE ----- 7 OZ MAX

RELEASE FORCE ----- 1 OZ MIN

DIFFERENTIAL TRAVEL --- .006 MAX

OVERTRAVEL ----- .003 MIN

ELECTRICAL DATA

CONTACT ARRANGEMENT  
S P D T

LINE VOLTAGE	INDUCTIVE LOAD	RESISTIVE LOAD
28 VDC	2 AMP	4 AMP
115 VAC (400 CYCLE)	2 1/2 AMP	2 1/2 AMP

SCALE 2 : 1

DO NOT SCALE PRINT

TOLERANCES  
APPLY TO DESIGN UNITS. CONVERSIONS ARE ONLY FOR REFERENCE. UNLESS NOTED, TOLERANCES ARE ±

	DIM. mm	TOL. mm/in	DIM. in	TOL. mm/in
NO PLACES	X	1/.04	X	0.8/.03
ONE PLACE	X,X	0.4/.016	X,X	0.38/.015
TWO PLACES	X,X,X	0.15/.006	X,X,X	0.13/.005
THREE PLACES				
ANGLES				

DESIGN UNITS  SI METRIC

US CUSTOMARY

WEIGHT  5

FO-52848-A

DRAWN

GRT