

# 6000 series

## Toggle switches for military applications

*Distinctive features and specifications*

- Suitable for military applications (portable measuring equipment generators, beacons, fixed and mobile radiotransmitters)
- Sealing and locking lever options available
- Matt black finish on actuator and bushing

### ELECTRICAL SPECIFICATIONS

- Max. current/voltage rating : see table below
- Initial contact resistance : 10 mΩ max. at 1A 2VDC
- Insulation resistance : 1.000 MΩ min. at 500VDC
- Dielectric strength :
  - 2.000 Vrms 50 Hz min. between terminals
  - 3.000 Vrms 50 Hz min. between terminals and frame
- Electrical life : 10.000 cycles at full load

	CURRENT/VOLTAGE RATING			
	30VDC	250VAC	125VAC	115V 400Hz
Resistive load	6,5A	5A	10A	7A
Inductive load	5A	3A	6A	5A
Lamp load	3A	1A	3A	3,5A

### MATERIALS

- Case : diallylphthalate (DAP)
- Actuator : brass, chrome plated, black
- Bushing : brass, chrome plated, black
- Contacts :
  - A : silver

### GENERAL SPECIFICATIONS

- Torque : 1,50 Nm (1.10 Ft.lb) max. applied to nut
- Panel thickness : 5 mm (.196) max.
- Operating temperature : -40°C to +85°C

### ABOUT THIS SERIES

**Dimensions** : first dimensions are in mm while inches are shown as bracketed numbers.

**Security caps** are available to prevent inadvertent lever operation. They are presented in section I.



**Sealing boots** are available to protect the switches against dust and water. They are presented in section H.



**Mounting accessories** : standard hardware supplied with all models : 2 matt black nuts U41, matt black locking ring U12, zinc plated lockwasher U13  
They are presented in section I.

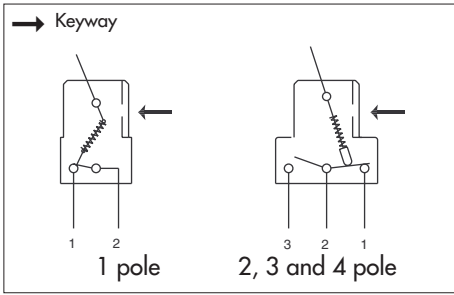


**Packaging unit** : 25 pieces, except model 6421 (20 pieces)

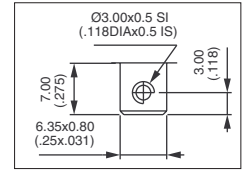


# 6000 series

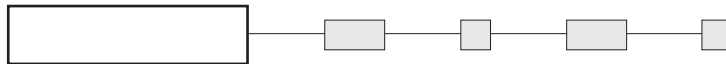
Toggle switches for military applications



- Screw terminals standard
- Solder lug or quick-connect terminals optional
- 1, 2, 3 and 4-pole configurations



MODEL STRUCTURE



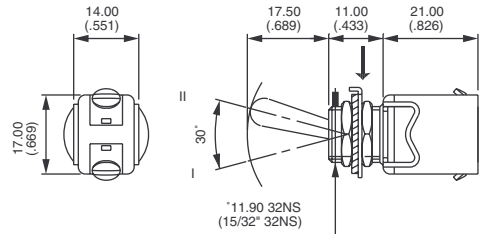
## Single pole

→ Keyway



6421A-03

	I	II
	ON	OFF



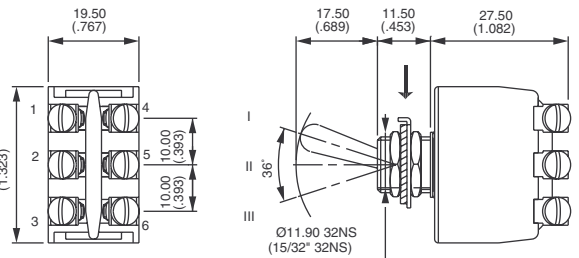
## Double pole

→ Keyway



6641-03  
6642-03  
6643-03  
6644-03 ▲  
6645-03  
6646-03  
6647-03  
6648-03  
6649-03

	III	II	I
	2-1		2-3
	5-4		5-6
	ON	-	OFF
	ON	-	mom.OFF
	MOM	-	OFF
	ON	ON	ON
	MOM	-	ON
	ON	-	ON
	MOM	OFF	MOM
	ON	OFF	MOM
	ON	OFF	ON



▲ Function 4 : SP in DP case, see end of catalogue.

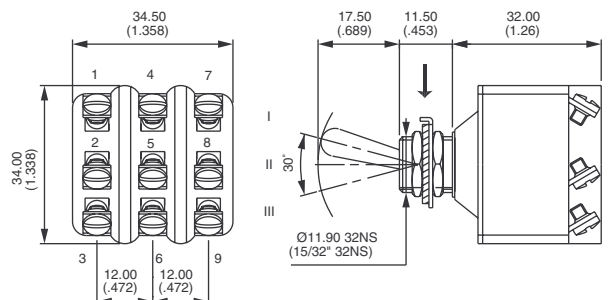
## Three pole

→ Keyway



6651-03  
6652-03  
6653-03  
6655-03  
6656-03  
6657-03  
6658-03  
6659-03

	III*	II	I**
	ON	-	OFF
	ON	-	mom.OFF
	MOM	-	OFF
	MOM	-	ON
	ON	-	ON
	MOM	OFF	MOM
	ON	OFF	MOM
	ON	OFF	ON



\* (2-1) (5-4) (8-7) \*\* (2-3) (5-6) (8-9)

# 6000 series

Toggle switches for military applications

OPTIONS

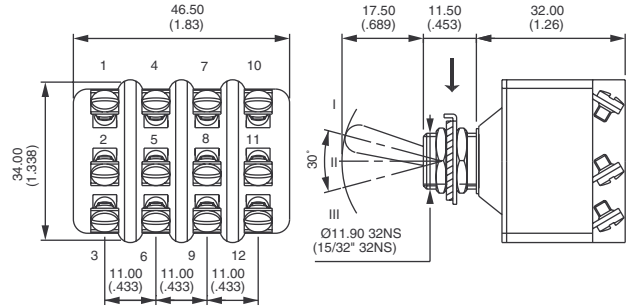


## Four pole

→ Keyway



	III*	II	I**
6661-03	ON	-	OFF
6662-03	ON	-	mom.OFF
6663-03	MOM	-	OFF
6664-03 ▲	ON	ON	ON
6665-03	MOM	-	ON
6666-03	ON	-	ON
6667-03	MOM	OFF	MOM
6668-03	ON	OFF	MOM
6669-03	ON	OFF	ON

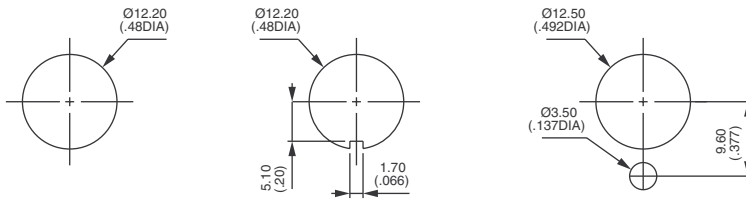


\* (2-1) (5-4) (8-7) (11-10)

\*\* (2-3) (5-6) (8-9) (11-12)

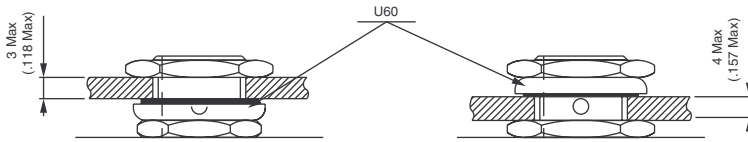
▲ Function 4 : 2P in 4P case, see end of catalogue.

### STANDARD PANEL CUT-OUT

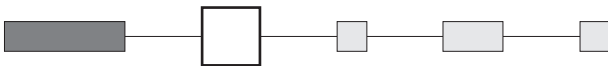


### PANEL CUT-OUT WITH "K" SEALING

Recommended cut-out and mounting depending on panel thickness



### FINISH



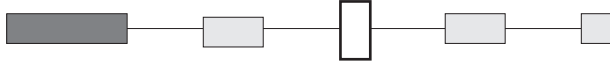
- B** Lever and bushing with grey satin chrome finish
- LM** Nickel plated bushing - lever and upper nut bright chrome plated
- 8** Matt black lever with fluorescent tip



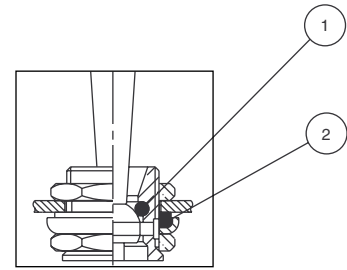
# 6000 series

Toggle switches for military applications

## SEALING

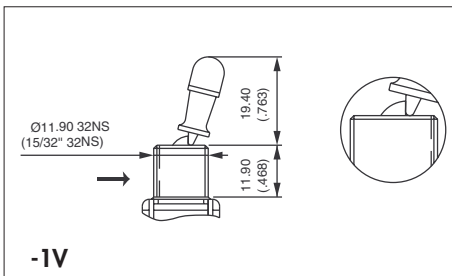


**K** Frontal sealing by O-ring and sealing washer. Protects the switch against water and dust. Panel seal withstands 1 bar pressure and remains sealed even when switch is operated



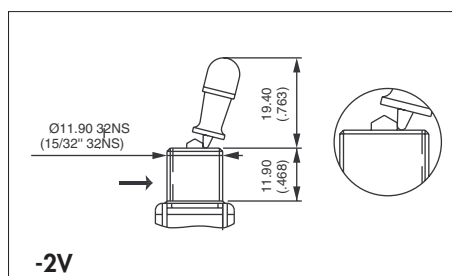
① O-ring ② Sealing washer

## LOCKING LEVERS



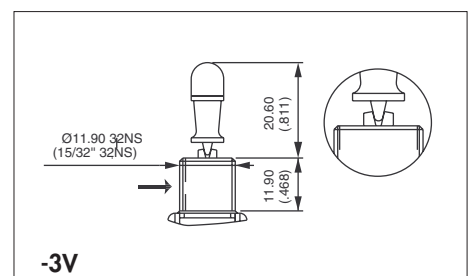
**-1V**

1 locked position



**-2V**

2 locked positions



**-3V**

3 locked positions

→ Keyway

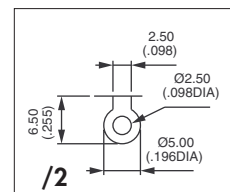
## TERMINALS



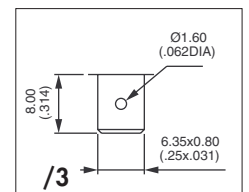
- Blank** Screw terminals
- /2** Solder lug terminals
- /3** Quick-connect terminals 6,35 x 0,8 (.250 x .031)



Not available on single pole models.



**/2**



**/3**

## NEOPRENE PROTECTION CAPS

These caps are designed to insulate terminals against electrical short circuit.



For 1-pole models

**U58**

For 2-pole models

**U120**

For 3-pole models

**U46**

For 4-pole models

**U47**

To be ordered separately. Example : PROTECTION CAP U58