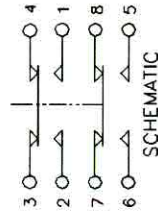


**CHARACTERISTICS:**

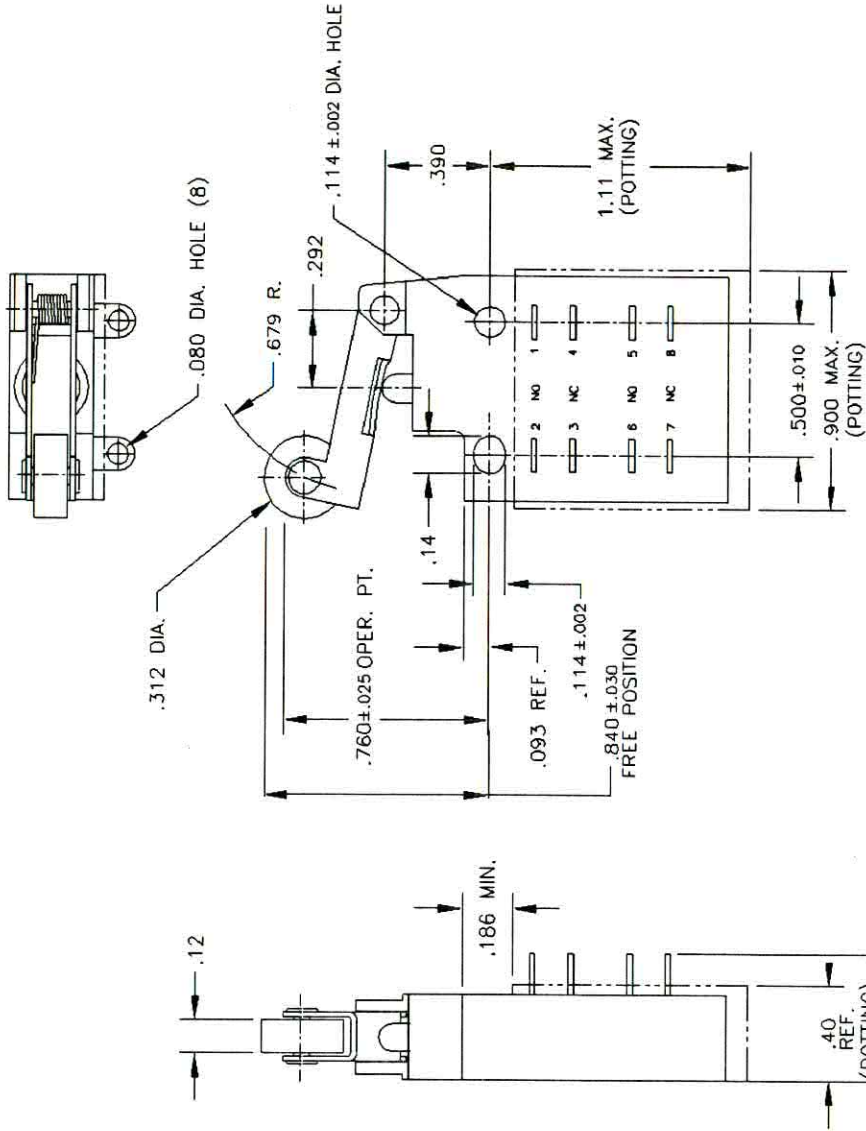
CONTACT ARRANGEMENT DPDT-DB  
 PRETRAVEL .135 MAX.  
 OVERTRAVEL SEE NOTE 4  
 OPERATING FORCE 16 OZ. MAX.  
 RELEASE FORCE 4 OZ. MIN.  
 MOVEMENT DIFFERENTIAL .058 MAX.  
 ELECTRICAL RATING (EACH POLE, @ SEA LEVEL)  
 FORM XX OR YY 8A, 28VDC RES.  
 7.5A, 28VDC IND.  
 8A, 125/250 VAC  
 5A, 28VDC IND.  
 FORM ZZ

- NOTES:  
 1. TEMP. RANGE -65°F. TO 185°F.  
 2. MECH./ELEC. ENDURANCE 60,000 CYCLES MIN.  
 3. ENCLOSURE DESIGN: WATERTIGHT  
 PER MIL-S-8805 DESIGN SYMBOL "3"  
 4. OVERTRAVEL: .040 MIN. @ .735 OPER. PT.  
 .100 MIN. @ .785 OPER. PT.  
 5. SWITCH MARKING:  
 ITW PART NO.  
 CUSTOMER PART NO.  
 5930-00-2750466  
 MFG. DATE CODE  
 5. SWITCH POTTED PER TM 235



THIS IS A KEYED PRINT

REVISIONS			
REV	DESCRIPTION	DATE	APPROVED
H	REV. & REDRAWN ECN27333	6-16-98	
J	ECN 27484	2-2-99	JS
K	REVISED B/M PER E.C.N. 27866.	7 MAY 2002	JE



TOLERANCES UNLESS OTHERWISE NOTED		DATE	REF:	REV
3 PLACE DECIMAL ±.005		6-16-98	066\330062	K
2 PLACE DECIMAL ±.01		DRAWN	CHK	APP'D
ANGULAR ± 1/2°		JE	MLD	MLD
DWG TITLE		SIZE		REV
T-65 ENVIRONMENT FREE SWITCH		B		K
		DWG NO.		65-330062
		SCALE		2 : 1
		SHEET		1 OF 1

**ITW Switches**  
 AN ILLINOIS TOOL WORKS COMPANY

REF: NORTHROP CORP.  
 14-74902-6