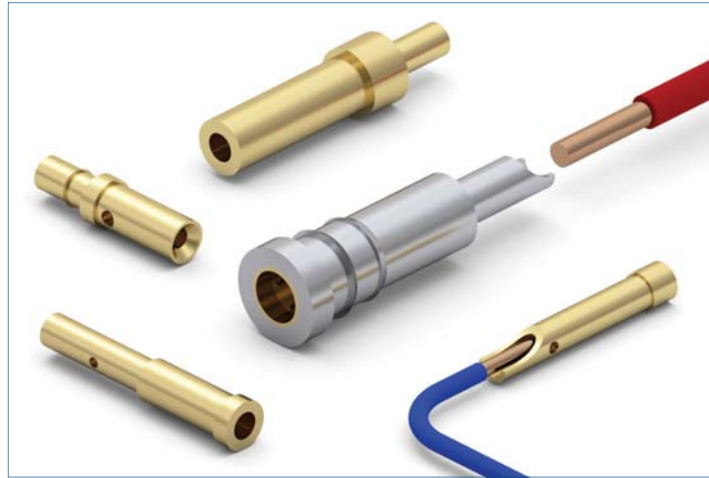


MAXIMUM SOLUTIONS

Mill-Max Introduces Five New Wire Termination Contacts



Mill-Max has expanded its selection of wire termination products with the addition of new wire crimp and solder cup receptacles.

The three new wire crimp receptacles can accommodate wires from 22-26 AWG and accept mating pins in the popular .025" (.63 mm) - .040" (1.02 mm) range. The two solder cup receptacle additions provide solutions for solder terminations of disparate uses. The 9177 is ideal for high current, rugged applications handling currents in the 15 amp range while the 4485 can be used on pin-to-pin spacing down to 2 mm. Three of the five parts have inspection holes to accommodate wire viewing and to promote plating coverage inside the wire termination holes. Please see Tables 1 & 2 below for details.

Table 1

Wire Crimp Receptacle P/N	Wire Accommodation	Mating Pin Range Ø	Inspection Hole (Yes/No)	Receptacle Current Rating (Amps) at 10° C Temp. Rise
6368-0-33-15-47-27-10-0	22-26 AWG	.025" - .037"	Yes	4.5
4130-0-33-15-34-27-10-0	22-26 AWG	.032" - .046"	Yes	8
8731-0-19-15-34-27-10-0	22-26 AWG	.032" - .046"	No	8

(7/16 -- PR667)

Mill-Max Mfg. Corp. • 190 Pine Hollow Road, Oyster Bay, NY 11771
516-922-6000 • Fax: 516-922-9253 • www.mill-max.com



Table 2

Solder Cup Receptacle P/N	Wire Accommodation	Mating Pin Range Ø	Inspection Hole (Yes/No)	Receptacle Current Rating (Amps) at 10° C Temp. Rise
4485-0-51-15-21-27-10-0	22 AWG Max.	.015" - .022"	Yes	3
9177-0-18-80-07-27-10-0	16 AWG Max.	.065" - .082"	No	15

The receptacles are a two piece construction with a precision-machined outer shell and stamped beryllium copper internal contact. Like all Mill-Max receptacles, they are capable of multiple insertion and extraction cycles while maintaining reliable contact over the life of the product.

Various shell and contact plating options are available.

Please visit www.mill-max.com/PR667 for more information and to view Mill-Max's complete line of wire crimp and solder cup receptacles.

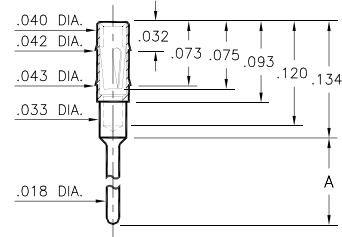
PIN RECEPTACLES

**FOR .015" - .020" DIAMETER PINS (#11 CONTACT)
AND .015" - .022" DIAMETER PINS (#05 & #21 CONTACTS)
(SEE SPECIFIC CONTACT RANGE ON PAGE 251)**

0489

0489-X-15-XX-11-XX-04-0

Press-fit in .041 mounting hole



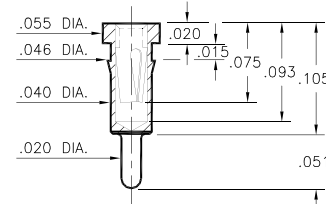
Basic Part Number	Length A
0489-0	.102
0489-1	.199
0489-2	.299

0463

0463-0-15-XX-21-XX-04-0

Press-fit in .043 mounting hole.

Shell is Phosphor Bronze Alloy 544 (B2)

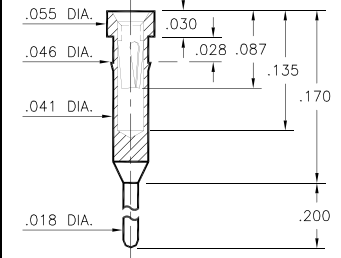


0466

0466-0-15-XX-21-XX-04-0

Press-fit in .043 mounting hole.

Shell is Phosphor Bronze Alloy 544 (B2)

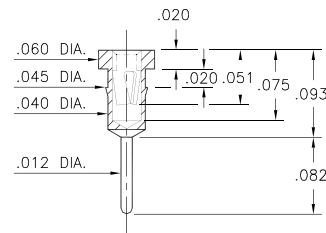


7491

7491-0-15-XX-09-XX-04-0

Press-fit in .042 mounting hole

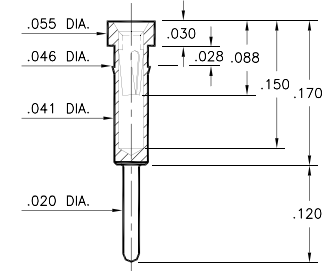
*Contact substitution not recommended



0462

0462-0-15-XX-X1-XX-04-0

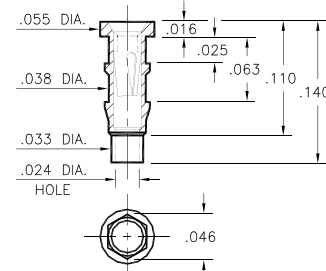
Press-fit in .043 mounting hole



0560

0560-0-15-XX-11-XX-10-0

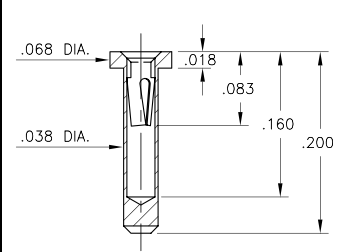
Hex press-fit in .043 plated through-hole



5552

5552-0-15-XX-05-XX-10-0

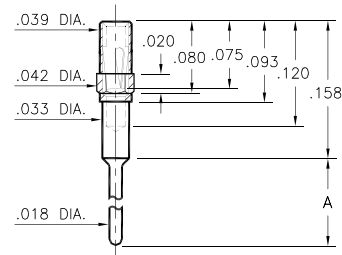
Solder mount in .040 min. mounting hole



4890

4890-X-15-XX-11-XX-04-0

Octagonal press-fit in .041 mounting hole

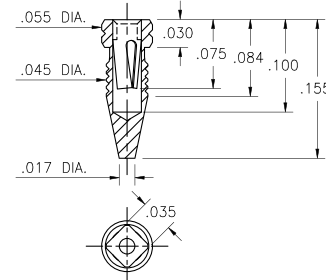


Basic Part Number	Length A
4890-0	.102
4890-1	.199
4890-2	.299

4994

4994-0-15-15-11-27-10-0

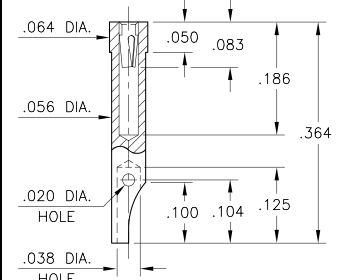
Compliant press-fit in .041 - .044 dia. mounting hole



4485

4485-0-51-XX-21-XX-10-0

Solder mount in .059 min. mounting hole
For wire sizes up to 22 AWG



SPECIFICATIONS:

Shell Material: Brass Alloy 360, 1/2 Hard

Contact Material: Beryllium Copper Alloy 172, HT

Dimensions: Inches

Tolerances On: Lengths: ±.005

Diameters: ±.002

Angles: ± 2°



ORDER CODE: XXXX - X - XX - XX - XX - XX - XX - 0

BASIC PART #

SPECIFY SHELL FINISH:

- 01 200 μ" TIN/LEAD OVER NICKEL
- ◆ 80 200 μ" TIN OVER NICKEL (RoHS)
- ◆ 15 10 μ" GOLD OVER NICKEL (RoHS)

SPECIFY CONTACT FINISH:

- 02 100 μ" TIN/LEAD OVER NICKEL
- ◆ 84 100 μ" TIN OVER NICKEL (RoHS)
- ◆ 27 30 μ" GOLD OVER NICKEL (RoHS)

SELECT CONTACT:

#05, #11 or #21 CONTACT (DATA ON PAGE 251)

(For alternate contact choices, see group A on page 248)



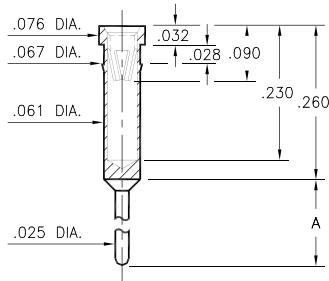
PIN RECEPTACLES

FOR .025" - .037" DIAMETER PINS AND .025" SQUARE PINS

0401/6401

X401-0-15-XX-47-XX-04-0

Press-fit in .064 mounting hole

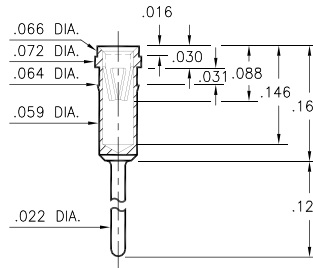


Basic Part Number	Length A
0401-0	.340
6401-0	.540

1303

1303-0-15-XX-47-XX-04-0

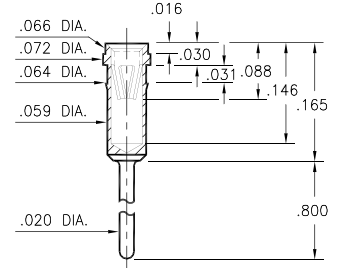
Press-fit in .061 mounting hole



8303

8303-0-15-XX-47-XX-04-0

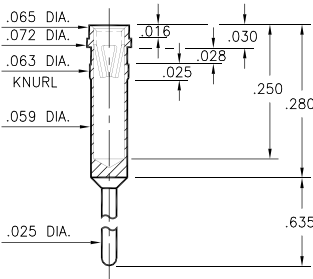
Press-fit in .061 mounting hole



4095

4095-0-15-XX-47-XX-04-0

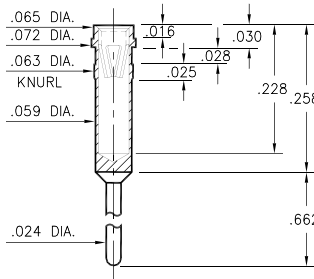
Press-fit in .061 mounting hole



4014

4014-0-15-XX-47-XX-04-0

Press-fit in .061 mounting hole



8806

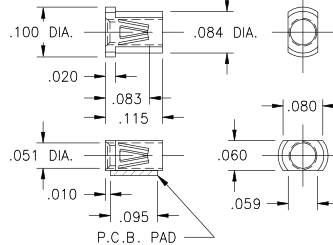
8806-0-18-XX-47-XX-40-0

Surface mount

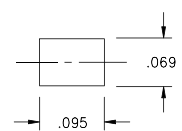
Also available on 12mm wide carrier tape:

4,000 parts per 13" reel

Order as: 8806-0-58-XX-47-XX-10-0



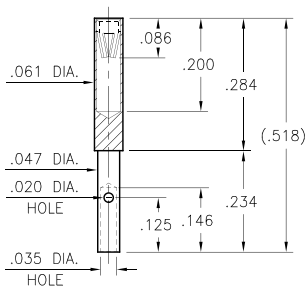
P.C.B. Layout



0722

0722-0-33-XX-47-XX-10-0

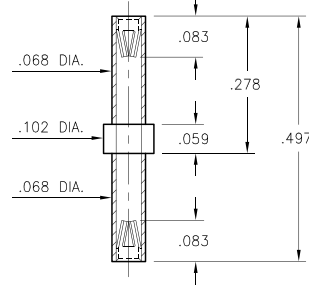
Wire crimp termination. Accepts wire sizes 22 AWG Max. / 28 AWG Min.



6839

6839-0-40-XX-47-XX-10-0

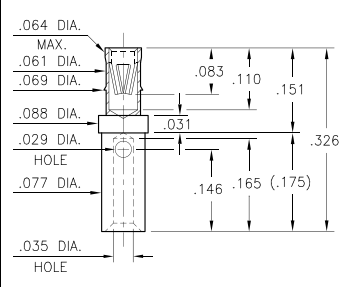
Double Ended Receptacle



6368

6368-0-33-XX-47-XX-10-0

Wire crimp termination. Accepts wire sizes 22 AWG Max. / 24 AWG Min.



SPECIFICATIONS:

Shell Material: Brass Alloy 360, 1/2 Hard

Contact Material: Beryllium Copper Alloy 172, HT

Dimensions: Inches

Tolerances On: Lengths: ±.005

Diameters: ±.002

Angles: ± 2°



ORDER CODE: XXXX - X - XX - XX - 47 - XX - XX - 0

BASIC PART #

SPECIFY SHELL FINISH:

- 01 200 μ" TIN/LEAD OVER NICKEL
- ◆ 80 200 μ" TIN OVER NICKEL (RoHS)
- ◆ 15 10 μ" GOLD OVER NICKEL (RoHS)

SPECIFY CONTACT FINISH:

- 01 200 μ" TIN/LEAD OVER NICKEL
- ◆ 80 200 μ" TIN OVER NICKEL (RoHS)
- ◆ 27 30 μ" GOLD OVER NICKEL (RoHS)

SELECT CONTACT:

#47 CONTACT (DATA ON PAGE 256)

(For alternate contact choices, see group D on page 248)



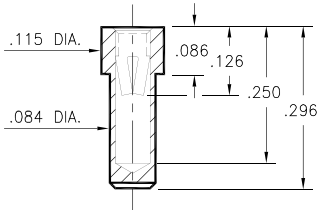
PIN RECEPTACLES

FOR .032" - .046" DIAMETER PINS

8838

8838-0-15-XX-34-XX-10-0

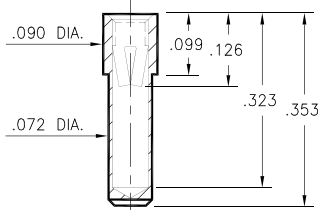
Solder mount in .086 min. mounting hole



3100

3100-0-15-XX-34-XX-10-0

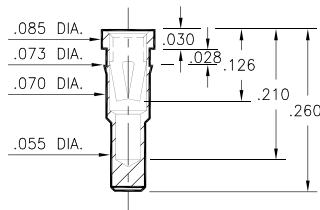
Solder mount in .074 min. mounting hole



8853

8853-0-15-XX-34-XX-10-0

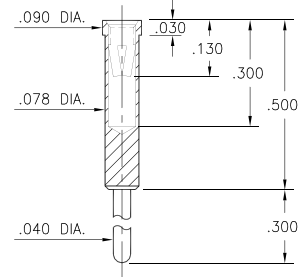
Press-fit in .071 mounting hole



6800

6800-0-15-XX-34-XX-04-0

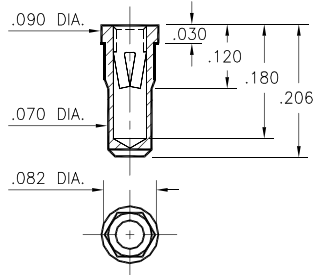
Solder mount in .080 min. mounting hole



0739

0739-0-15-XX-34-XX-10-0

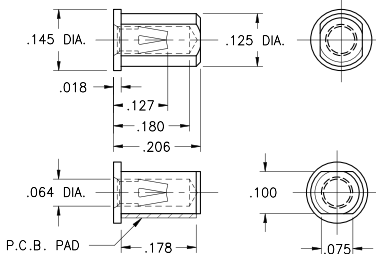
Hex press-fit in .078 plated through-hole



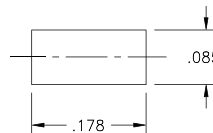
8206

8206-0-15-XX-34-XX-40-0

Surface mount, board edge
Also available on 16mm wide carrier tape:
Packaged Vertically 1,400 parts per 13" reel
Order as: 8206-0-57-XX-34-XX-40-0



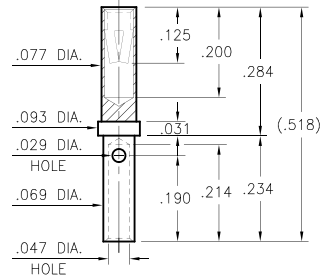
P.C.B. Layout



0720

0720-0-33-XX-34-XX-10-0

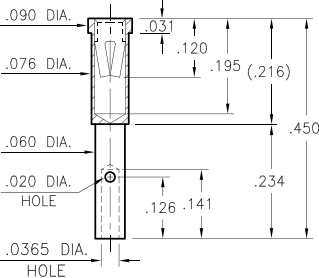
Wire crimp termination. Accepts wire sizes 20 AWG Max. / 24 AWG Min.



4130

4130-0-33-XX-34-XX-10-0

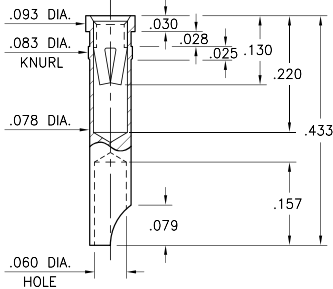
Wire crimp termination. Accepts wire sizes 22 AWG Max. / 24 AWG Min.



5084

5084-0-18-XX-34-XX-10-0

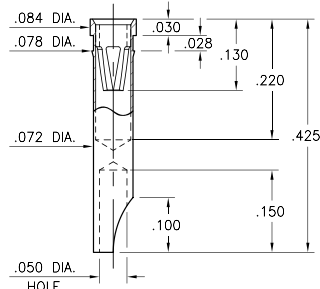
Press-fit in .081 mounting hole



0740

0740-0-18-XX-34-XX-10-0

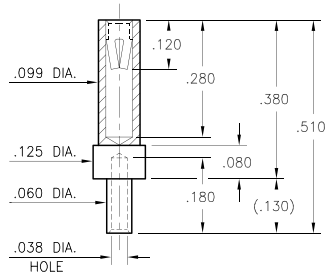
Press-fit in .075 mounting hole
For wire sizes up to 20 AWG



8731

8731-0-19-XX-34-XX-10-0

Wire crimp termination. Accepts wire sizes 22 AWG Max. / 26 AWG Min.



SPECIFICATIONS:

Shell Material: Brass Alloy 360, 1/2 Hard

Contact Material: Beryllium Copper Alloy 172, HT

Dimensions: Inches

Tolerances On: Lengths: ±.005

Diameters: ±.002

Angles: ± 2°



ORDER CODE: XXXX - X - XX - XX - 34 - XX - XX - 0

BASIC PART #

SPECIFY SHELL FINISH:

- 01 200 μ" TIN/LEAD OVER NICKEL
- ◆ 80 200 μ" TIN OVER NICKEL (RoHS)
- ◆ 15 10 μ" GOLD OVER NICKEL (RoHS)

SPECIFY CONTACT FINISH:

- 01 200 μ" TIN/LEAD OVER NICKEL
- ◆ 80 200 μ" TIN OVER NICKEL (RoHS)
- ◆ 27 30 μ" GOLD OVER NICKEL (RoHS)

SELECT CONTACT:

#34 CONTACT (DATA ON PAGE 258)

(For alternate contact choices, see group E on page 248)



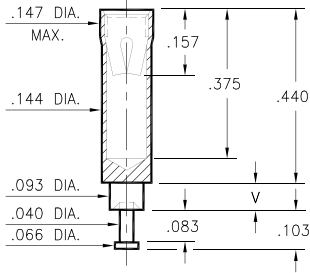
PIN RECEPTACLES

FOR .065" - .082" DIAMETER PINS

0395

0395-X-15-XX-07-XX-10-0

Swage mount in .096 hole

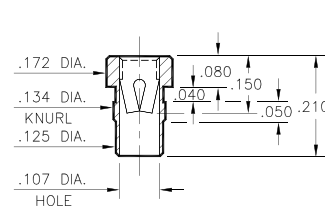


Basic Part Number	Board Thickness	Length V
0395-1	.031	.062
0395-2	.062	.094
0395-3	.094	.125
0395-4	.125	.156
0395-5	.188	.219

8016

8016-0-15-XX-07-XX-10-0

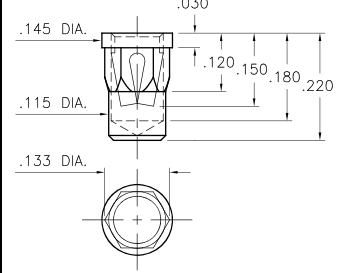
Press-fit in .131 mounting hole



0350

0350-0-15-XX-07-XX-10-0

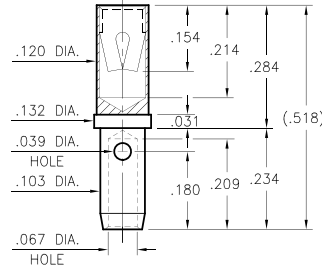
Hex press-fit in .129±.002 plated through-hole



0714

0714-0-33-XX-07-XX-10-0

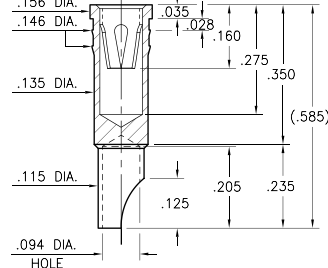
Wire crimp termination. Accepts wire sizes 14 AWG Max. / 16 AWG Min.



0778

0778-0-18-XX-07-XX-10-0

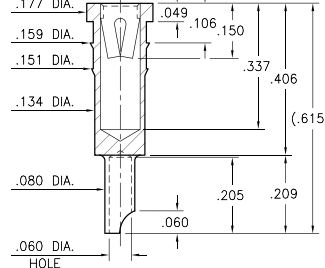
Press-fit in .143 mounting hole
Accepts wire sizes up to 14 AWG



9177

9177-0-18-XX-07-XX-10-0

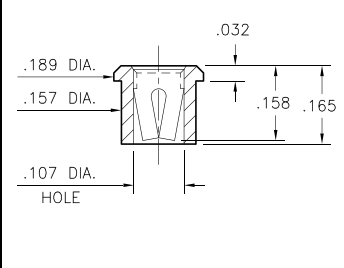
Press-fit in .151 mounting hole
Accepts wire sizes up to 16 AWG



5391

5391-0-15-XX-07-XX-10-0

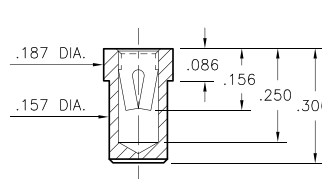
Solder mount in .159 min. mounting hole



8837

8837-0-15-XX-14-XX-10-0

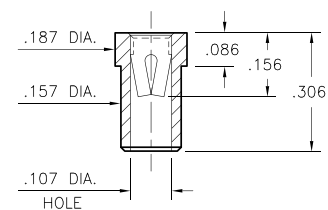
Solder mount in .159 min. mounting hole



9837

9837-0-15-XX-14-XX-10-0

Solder mount in .159 min. mounting hole



SPECIFICATIONS:

Shell Material: Brass Alloy 360, 1/2 Hard

Contact Material: Beryllium Copper Alloy 172, HT

Dimensions: Inches

Tolerances On: Lengths: ±.005

Diameters: ±.002

Angles: ± 2°



ORDER CODE: XXXX - X - XX - XX - XX - XX - 10 - 0

BASIC PART #

SPECIFY SHELL FINISH:

01 200 μ" TIN/LEAD OVER NICKEL

◆ 80 200 μ" TIN OVER NICKEL (RoHS)

◆ 15 10 μ" GOLD OVER NICKEL (RoHS)

SPECIFY CONTACT FINISH:

01 200 μ" TIN/LEAD OVER NICKEL

◆ 80 200 μ" TIN OVER NICKEL (RoHS)

◆ 27 30 μ" GOLD OVER NICKEL (RoHS)

SELECT CONTACT:

#07 or #14 CONTACT (DATA ON PAGE 261)

(For alternate contact choices, see group H on page 248)

