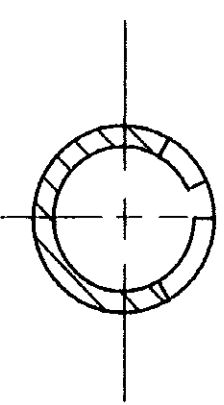
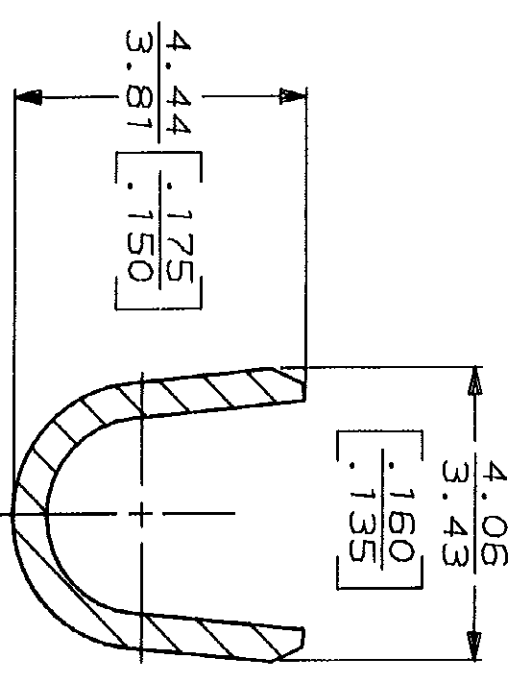
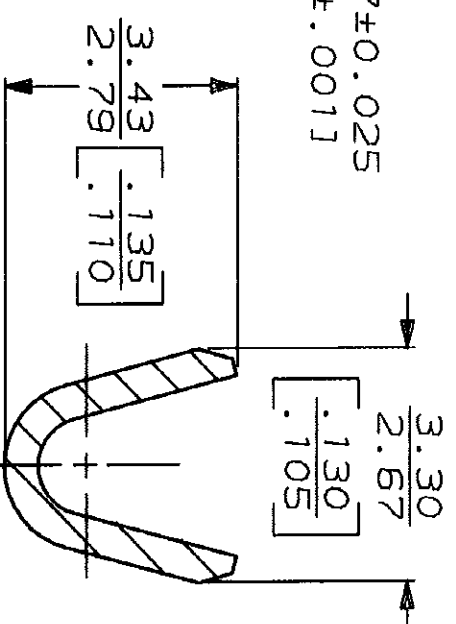
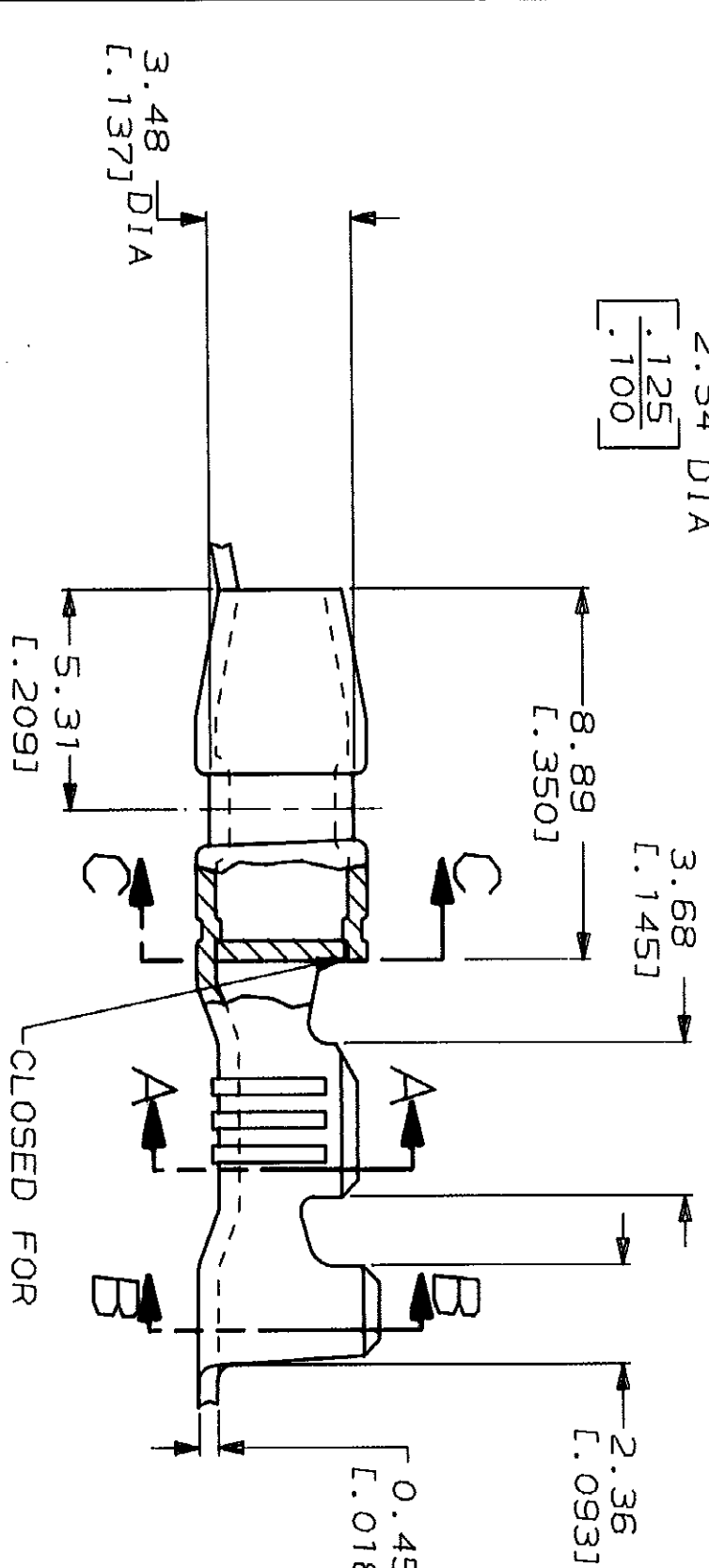
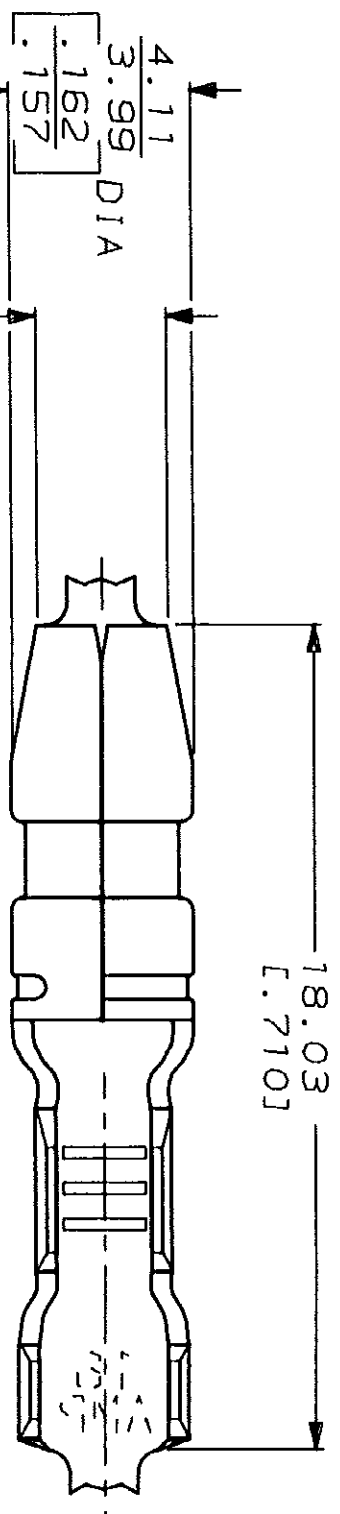


THIS DRAWING IS UNPUBLISHED. RELEASED FOR PUBLICATION BY AMP INCORPORATED. ALL INTERNATIONAL RIGHTS RESERVED. © COPYRIGHT 19

LOC	DIST	P	F	ZONE	LTR	DESCRIPTION	DATE	APPD
AF	50				H	REDRAWN PER AF-6810	7/26/90	PF/JR

REVISIONS		DATE	APPD
		7/26/90	PF/JR



CLOSED FOR MOLDING PURPOSES

1 CONTINUOUS STRIP ON REELS

METRIC

TYPE	WIDTH	STRIP LENGTH ±0.38 [±.015]	TYPE	WIDTH	HEIGHT ±0.051 [±.002]	WIRE
F or 0	3.56 [1.40]	5.33 [2.10]	F	2.29 [0.90]	1.68 [0.66]	1.3mm [16]
INSUL BARREL CRIMP					1.50 [0.59]	0.8mm [18]
					1.42 [0.56]	0.5mm [20]

DO NOT SCALE PRINT. UNLESS SPECIFIED DIMENSIONS IN MILLIMETERS (DIMENSIONS IN INCHES)		WIRE RANGE		PART NO	
2.41-2.92 DIA [L. 095-.115]	0.5mm ² -1.3mm ² [20-16] AWG	2.41-2.92 DIA [L. 095-.115]		61388-1	
INSULATION RANGE		WIRE RANGE		PART NO	
#1 HARD BRASS		AMP Incorporated		Harrisburg, PA 17105-3608	
FINISH: 0.003302 [L. 000130] MAX PRE-TIN PL PER MIL-T-10727		NAME: SHUR PLUG, 3.96 [L. 156] DIA		DRAWING NO: 61388	
APPLICATION SPEC		CAGE CODE: 00779		SHEET: 1 OF 1	
WEIGHT		SCALE: 6:1			