



- Screw locking acc. to DIN EN 61076-2-101 und 109
- Degree of protection IP67
- Moulded versions
- Easy Assembly
- Excellent EMC shielding
- Versions with shielding rings/cable clamp
- Angled connectors adjustable in 4 positions

Description

Drawing

Contacts

Cable outlet

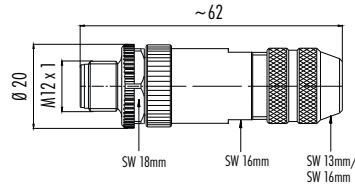
Ordering-No.

Male cable connector, CAT 5, screw clamp termination, with shielding ring, shieldable

4

6–8 mm

99 3729 810 04

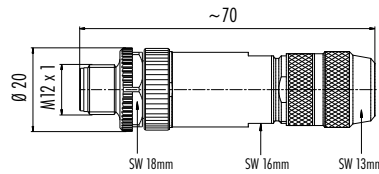


Male cable connector, CAT 5, screw clamp termination, iris type spring, shieldable

4

5–8 mm

99 3727 810 04

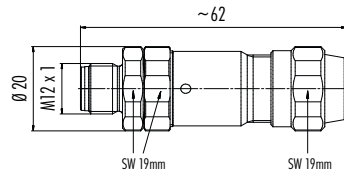


Male cable connector, CAT 5, screw clamp termination, with shielding ring, stainless steel version, shieldable

4

5,5–8,6 mm

99 3729 995 04

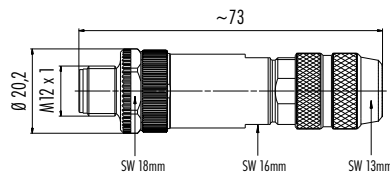


Male cable connector, CAT 5, crimp connection, shieldable

4

5–8 mm

99 3721 810 04



Crimp contacts see page 159

Specifications

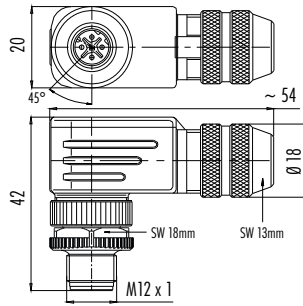
Contacts	4
Wire gauge	max. 0,75 mm ² (max. AWG 20), see crimp contacts page 161, PROFINET 0,34 mm ² (AWG 22)
Mechanical operation	> 100 Mating cycles
Temperature range	– 40 °C /+ 85 °C, PROFINET – 25 °C /+ 85 °C
Rated voltage	250 V
Pollution degree	3
Rated current (40°C)	4 A
Contact plating	Au (Gold)
Material of housing	zinc diecasting nickel plated, PUR

Description

Male angled connector, CAT 5, screw clamp termination, with shielding ring, shieldable



Drawing



It is possible to turn and fix the contact carrier in 4 different 90° positions



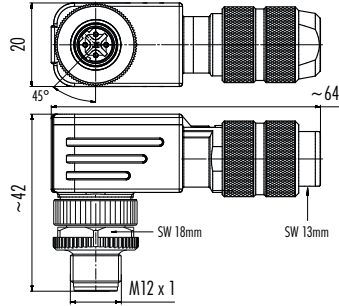
Contacts

Cable outlet

Ordering-No.

4 6-8 mm 99 3729 820 04

Male angled connector, CAT 5, screw clamp termination, iris type spring, shieldable



It is possible to turn and fix the contact carrier in 4 different 90° positions

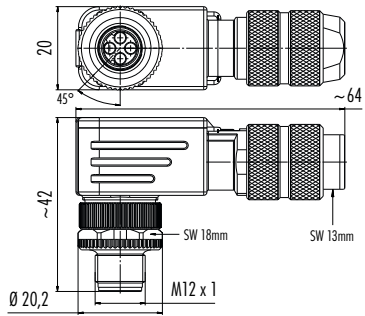


4

5-8 mm

99 3727 820 04

Male angled connector, CAT 5, crimp connection, shieldable



It is possible to turn and fix the contact carrier in 4 different 90° positions



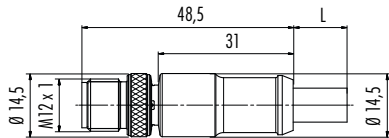
4

5-8 mm

99 3721 820 04

Crimp contacts see page 159

Male cable connector, shielded, PROFINET



Contacts

Cable length

Ordering-No.

4 x 0,34	2 m	77 4529 0000 50704-0200
	5 m	77 4529 0000 50704-0500
	10 m	77 4529 0000 50704-1000

Specifications

PROFINET Cable

Contacts	4
Wire gauge	2 x 2 x AWG 22
Material jacket	PUR
Insulation of wire	Polyolefin
Design of wire (mm)	7 x 0,34 (AWG 22)
Cable diameter (mm)	6,7
Resistance of wire	55 Ω/Km (20 °C)
Temperature range cable in move	- 20 °C / + 60 °C
Temperature range cable fixed	- 40 °C / + 80 °C
Bending radius cable in move	min. 15 x d
Bending radius cable fixed	min. 5 x d
Bending radius (at 10 x D)	2 Mio.
Permitted acceleration	2 m/s ²
Traverse path horizontal 5 m/s ²	5 m
Traverse path vertical 5 m/s ²	5 m
Traverse speed	At 5 m horizontal traverse up to 200 m/min
Remark	In chain flex application or when stressed mechanically +60 °C.
Approval	PROFINET, UL/CSA
UL-style	AWM 20236

Description	Drawing	Contacts	Cable outlet	Ordering-No.
Female cable connector, CAT 5, screw clamp termination, with shielding ring, shieldable		4	6–8 mm	99 3730 810 04



Female cable connector, CAT 5, screw clamp termination, iris type spring, shieldable		4	5–8 mm	99 3728 810 04
--	--	---	--------	----------------



Female angled connector, CAT 5, screw clamp termination, with shielding ring, shieldable		4	5,5–8,6 mm	99 3730 820 04
--	--	---	------------	----------------



It is possible to turn and fix the contact carrier in 4 different 90° positions



Female angled connector, CAT 5, screw clamp termination, iris type spring, shieldable		4	5–8 mm	99 3728 820 04
---	--	---	--------	----------------



It is possible to turn and fix the contact carrier in 4 different 90° positions



Female cable connector, shielded, PROFINET		Contacts	Cable length	Ordering-No.
		4 x 0,34	2 m	77 4530 0000 50704–0200
			5 m	77 4530 0000 50704–0500
		10 m	77 4530 0000 50704–1000	



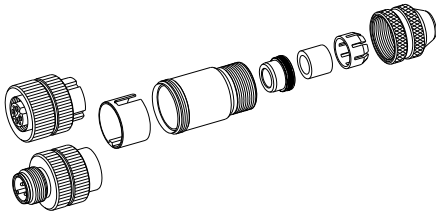
Male contact, PU 100 pieces		Wire gauge	AWG	Ordering-No.
		0,14 mm ² – 0,34 mm ²	26–22	61 1224 146
		0,34 mm ² – 0,5 mm ²	22–20	61 1154 146
		0,75 mm ² – 1,0 mm ²	18–16	61 1225 146
		1,0 mm ² – 1,5 mm ²	16	61 1226 146



NEW

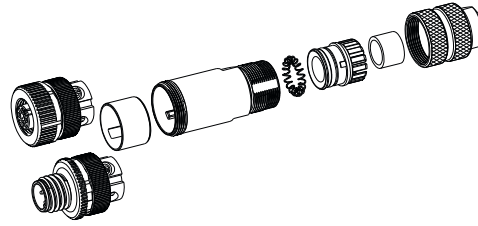
Component part drawing

Cable connectors, with shielding ring, shieldable



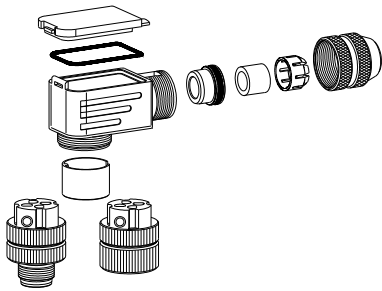
- Female insert/ Male insert
- Insulating sleeve tightly built into coupling sleeve
- Shielding ring
- O-ring
- Seal
- Pinch ring
- Pressing screw

Cable connectors, with iris type spring, shieldable



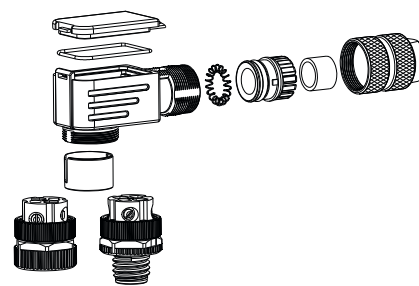
- Female insert/ Male insert
- Insulating sleeve, Sleeve, Pressing spring, O-ring, Pinch ring, Seal, Pressing screw are premounted

Angled connectors, shieldable



- Female insert/ Male insert
- Insulating sleeve tightly built into coupling sleeve
- Housing
- Seal
- Cover
- Shielding ring
- O-ring
- Seal
- Pinch ring
- Pressing screw

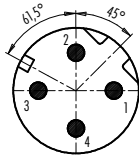
Angled connectors, with iris type spring, shieldable



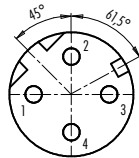
- Female insert/ Male insert
- Insulating sleeve, Housing, Pressing spring, O-ring, Pinch ring, Seal, Pressing screw are premounted
- O-ring
- Cover

Contact arrangements male insert (mating side)

4 contacts



Contact arrangements female insert (mating side)



Colour of wire, moulded cable and panel mount connectors

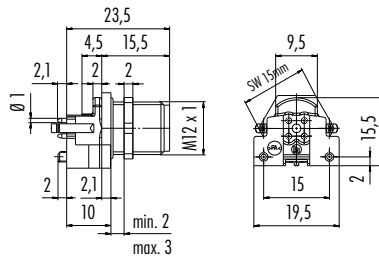
- 1 white-orange
- 2 orange
- 3 white-green
- 4 green
- Shield = Coupling ring

Description

Male receptacle for PCB assembly



Drawing



PCB thickness: 1,6 mm

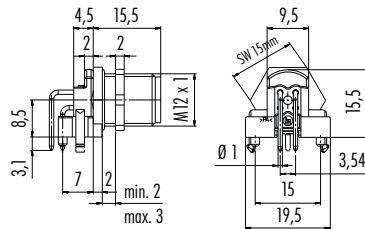
View of mating side



Contacts Ordering-No.

4	99 3731 200 04
	99 3731 201 04 with shielding sheet

Male angled receptacle for PCB assembly



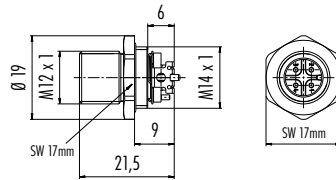
PCB thickness: 1,6 mm

View of mating side



4	99 3731 202 04
	99 3731 203 04 with shielding sheet

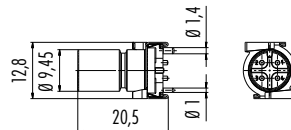
Male panel mount connector, SMT, with housing, shieldable



NEW

Contacts	Mounting height	Ordering-No.
4	9 mm	99 3731 401 04

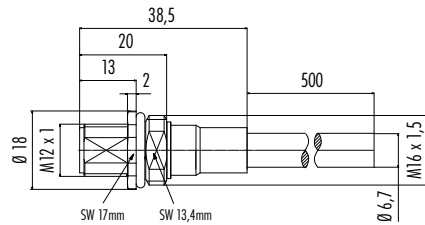
Male panel mount connector, SMT, with housing, shieldable



NEW

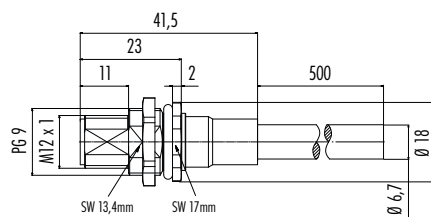
4	-	09 0731 601 04
---	---	----------------

Male panel mount connector M16, with PROFINET-cable, shielded



Contacts	Cable length, PUR	Fix. thread	Ordering-No.
4	0,5 m	M16 x 1,5	70 3733 705 04

Male panel mount connector PG 9, front fastened, with PROFINET-cable, shielded



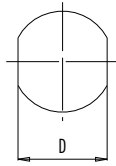
Hexagonal nut enclosed loose

4	0,5 m	PG 9	70 3733 706 04
---	-------	------	----------------

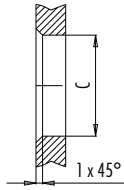
Panel cut out

Panel mount connector

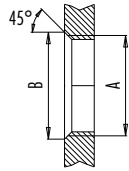
With flats as anti-rotation device



With bore hole



With thread to screw in



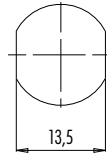
	A	B	C	D
PG 9	PG 9	16,2	15,3	13,5
PG 13,5	PG 13,5	21,5	20,5	—
M16x1,5	M16x1,5	17,0	16,1	13,5
M20x1,5	M20x1,5	21,0	20,1	—

Tightening moment
 Metal housing 6,25 Nm
 Plastic housing 3,75 Nm

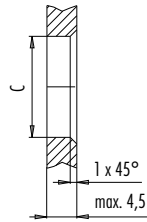
alternativ

Panel mount connector, front fastened

With flats as anti-rotation device



With bore hole



	C
PG 9	15,3
M16x1,5	16,1

Tightening moment
 Metal housing 6,25 Nm
 Plastic housing 3,75 Nm

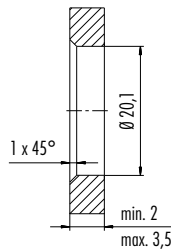
Panel mount connector, positioning possible



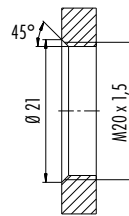
Tightening moment
 Metal housing 6,25 Nm
 Plastic housing 3,75 Nm

Panel mount connector, screw clamp termination

With bore hole

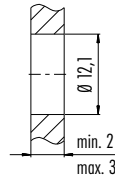


With thread to screw in



Tightening moment
 M20 x 1,5 2 Nm

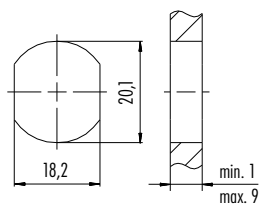
Panel mount connector, with thread M12



Tightening moment
 M12 x 1,5 6,25 Nm

Lead-through for control cabinet

With bore hole



Tightening moment
 1 - 1,2 Nm