



DESIGN KIT

WR-SMA / WR-RPSMA Connectors

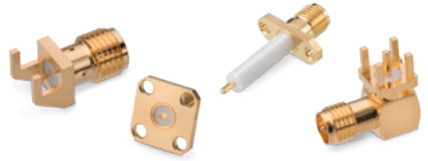


Order Code 603 301
Version 1.0

DESIGN KIT

WR-SMA / WR-RPSMA

Connectors



603 110 021 145 01
603 110 421 145 02

SMA Right Angle Jack THT

Center contact:
 \varnothing 1.27 mm

603 120 021 145 03
603 120 421 145 04

SMA Straight Jack THT

Center contact:
 \varnothing 1.27 mm

603 121 021 144 05
603 121 021 145 06

SMA Straight Jack SMT

Center contact:
 \varnothing 1.27 mm

603 122 x21 14x xx

SMA End Launch Edge Card &
 Round Post

Center contact:
 \varnothing 0.76 mm

603 122 021 145 xx

SMA End Launch Flat Tab

Center contact:
 \varnothing 0.51 WIDTH x 0.25 THK

603 12x 121 14x 1x

SMA 2-Hole Flange:
 Solder Cup / Flat Tab / Round Post /
 15 mm Exposed PTFE

Center contact:
 \varnothing 0.25 mm, \varnothing 1.27 mm &
 1.27 WIDTH x 0.127 THK

603 12x 221 14x xx

SMA 4-Hole Flange:
 Solder Cup / Flat Tab / Round Post /
 15 mm Exposed PTFE

Center contact:
 \varnothing 1.27 mm &
 1.27 WIDTH x 0.127 THK

603 1xx 021 245 xx

SMA Plug THT & End Launch

Center contact:
 \varnothing 0.76 mm & \varnothing 1.27 mm

630 1xx x21 245 0x

RP SMA Jack THT & End Launch

Center contact:
 \varnothing 0.76 mm & \varnothing 1.27 mm

Important information: Important information: Würth Elektronik's design kits contain reference components. These components correspond with the current product development status on the day of supply. Exchange of the reference components to components with up-to-date product development status is not carried out automatically. No liability is taken for the use of these reference components. Therefore, please request new samples prior to releases for series production and product release.

Please check datasheets on www.we-online.com for specifications. Würth Elektronik eiSos GmbH & Co. KG, EMC & Inductive Solutions. © 2018

**All products
 ex stock!**