

SERIES 6000

.375" PITCH, CENTERLINE CONTACTS

TECHNICAL DATA

MECHANICAL

Torque:
10 lbs-in. Max
Operating Temperature:
-40°C to +105°C
-40°F to +221°F
Soldering Temperature:
260°C, 500°F for 5 seconds max

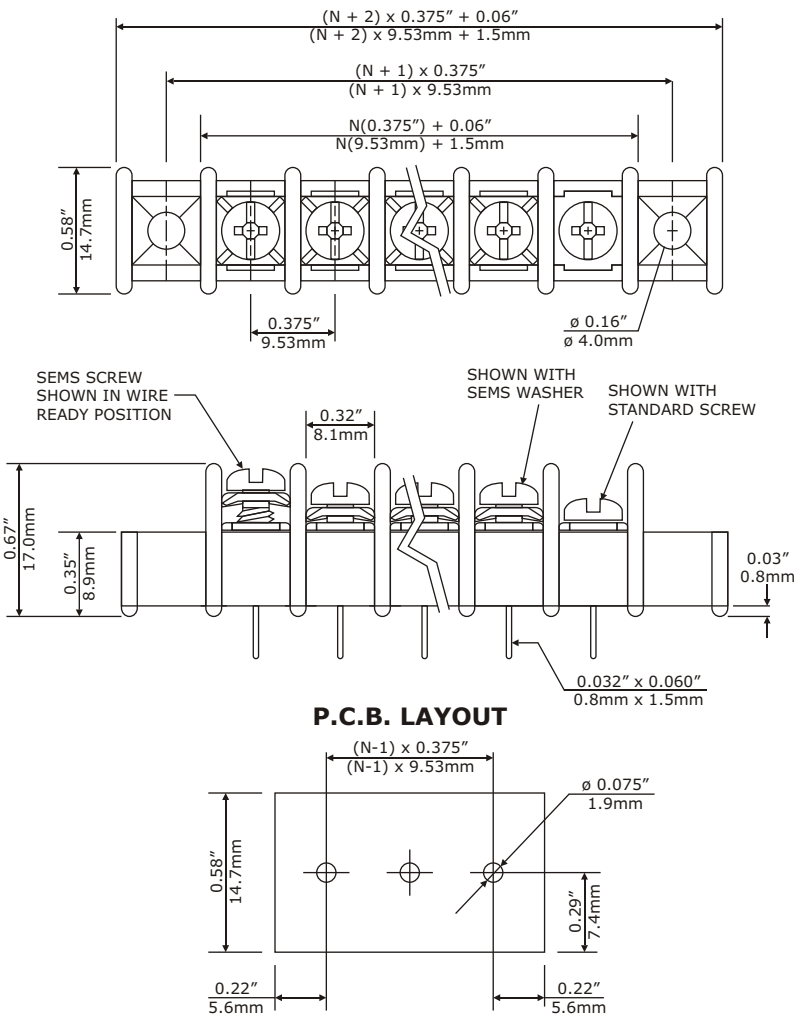
MATERIAL

Contact:
Brass, Tin Plated
Screw:
#6-32, Combo Head
Insulator Body:
Polycarbonate, UL 94V-0, Black

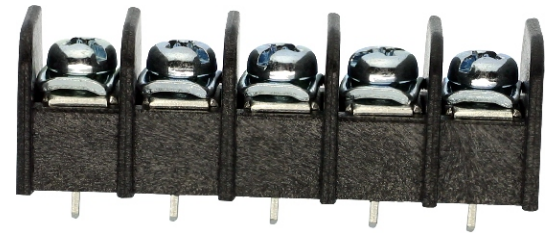
ELECTRICAL

Voltage Rating:
300VAC
Current Rating:
20 Amps
Wire Range:
12-24AWG

DIMENSIONAL REFERENCE



N = Number of contacts



Safety Approval:



PART NUMBERING

Part Number / Ordering Information

60XX-XX-X-XX-XXXX

Terminal Styles

NUMBER OF TERMINALS

OPTION CODE (IF APPLICABLE)

Mounting Hole Options

SCREW OPTIONS

- 00 - No Screws
- 01 - Steel Zinc Plated
- 02 - Steel Zinc Plated Sems
- 03 - Brass Nickel Plated
- 04 - Brass Nickel Plated Sems
- 05 - Stainless Steel Phillips Head
- 11 - Steel Zinc Captive
- 12 - Steel Zinc Sems Captive
- 13 - Brass Nickel Captive
- 14 - Brass Nickel Sems Captive
- 21 - Steel Zinc Captive, Wire Ready
- 22 - Steel Zinc Sems Captive, Wire Ready
- 23 - Brass Nickel Captive, Wire Ready
- 24 - Brass Nickel Sems Captive, Wire Ready
- 46 - Steel Sems Uncaptive, Wire Ready

EBY Electro, Inc.

210 Express Street
Plainview, NY 11803-2423 USA
© Copyright 2003 EBY Electro, Inc.



Electro-Mechanical Components Since 1945

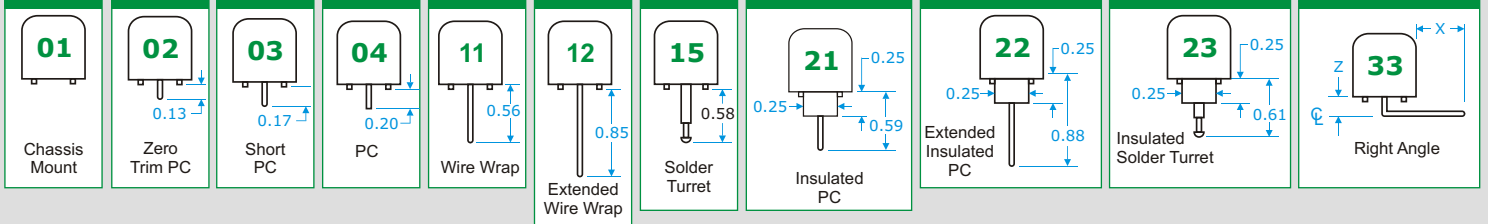
www.ebyelectro.com

Email: info@ebyelectro.com

Tel: 516.576.7777 · Fax: 516.576.1414

SERIES 6000 OPTIONS

XX Terminal Styles



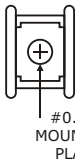
X Mounting Holes

Select the letters representing

With End Barriers



W



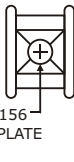
#0.156 MOUNTING PLATE

M



6/32 THREADED PLATE

H

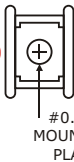


0.156 NO PLATE

Without End Barriers



C



#0.156 MOUNTING PLATE

T



6/32 THREADED PLATE

K



0.156 NO PLATE

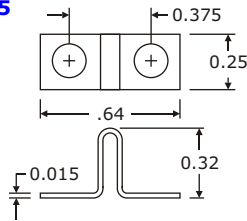
N

NO MOUNTING HOLES

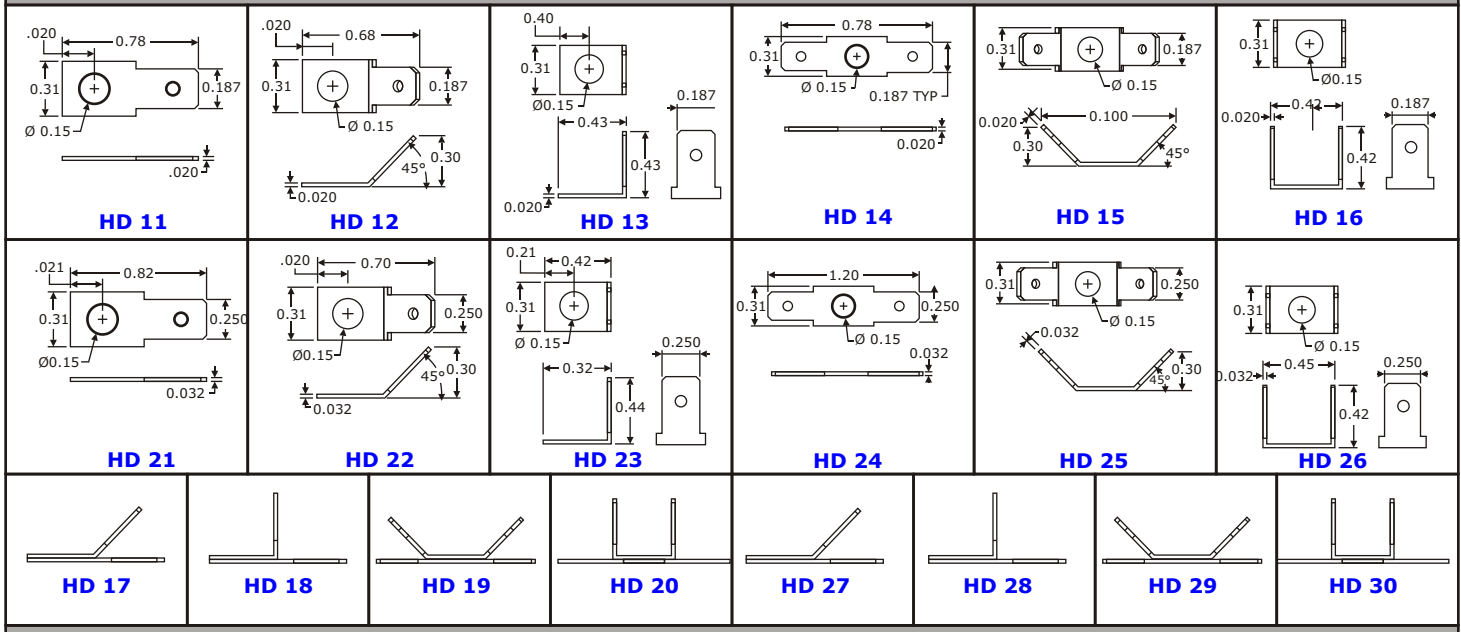
XXXX Jumpers

Select the letters representing

HD 95



XXXX Hardware



EBY Electro, Inc.

210 Express Street
Plainview, NY 11803-2423 USA
© Copyright 2003 EBY Electro, Inc.



Electro-Mechanical Components Since 1945

www.ebyelectro.com

Email: info@ebyelectro.com

Tel: 516.576.7777 · Fax: 516.576.1414