

# MICRO SWITCH

A DIVISION OF MINNEAPOLIS-HONEYWELL REGULATOR COMPANY  
 FREEPORT, ILLINOIS  
 FED. MFR. CODE 91929

# SWITCH-BASIC

CATALOG LISTING  
**5SE1-T**

5SE1-T

M

DRAWING NUMBER

8

X 6

ISSUE

8

REPLACES

RELEASE NO. SR 6412

CNT 23 APR 57

CHECK

REVISIONS  
 A CO13438  
 O M W  
 25 MAR 59  
 B CO18028  
 M B F  
 14 MAY 63  
 C CO-34213  
 J A L  
 25 SEPT 74  
 D OBSDPWG  
 CO76001

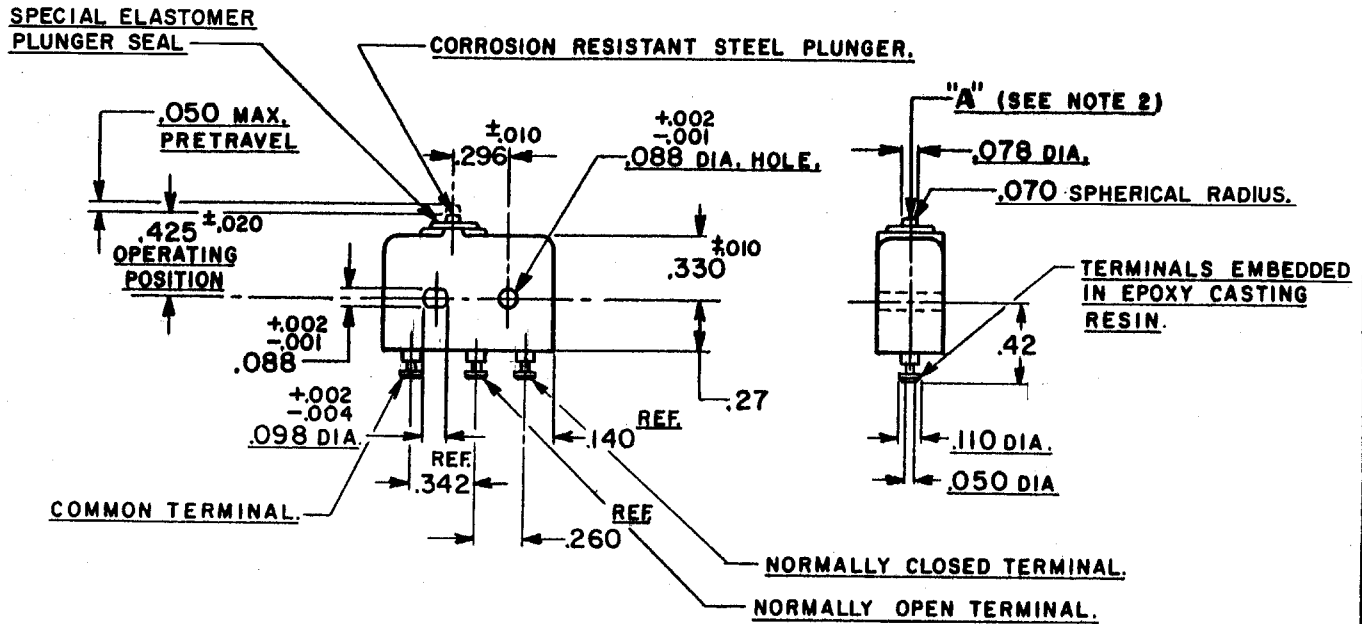
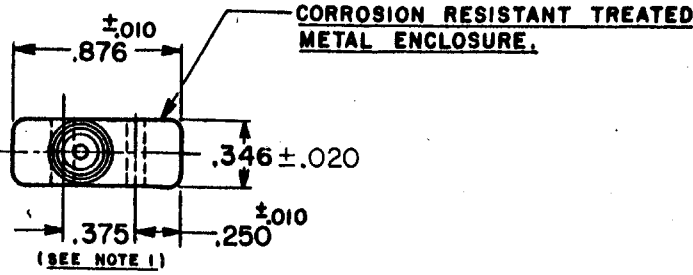
CHECK

REVISIONS  
 E REINST  
 CO79228  
 S A D  
 7 DEC 94

CHECK

R.E.R. 20 APR 57  
 GCH 25 APR 57

DRAWN



**NOTE:**  
 1- MOUNTING HOLES WILL ACCEPT .087 MAX. DIA. PINS OR SCREWS ON .375 ±.002 CENTERS.  
 2- ACTUATION IN LINE WITH ARROW "A" IS RECOMMENDED.

THIS DRAWING COVERS A PROPRIETARY ITEM AND IS THE PROPERTY OF MICRO SWITCH, A DIVISION OF HONEYWELL. THIS DRAWING IS NOT TO BE COPIED OR USED WITHOUT THE APPROVAL OF MICRO SWITCH.

CHARACTERISTICS	
OPERATING FORCE	5-17 OZ.
RELEASE FORCE	4 OZ. MIN.
RELEASE TRAVEL	.004 MIN.
DIFFERENTIAL TRAVEL	.004 MAX.
OVERTRAVEL	.003 MIN.

ELECTRICAL DATA	
CONTACT ARRANGEMENT S. P. D. T.	
250 VAC	
30 VOLTS DC RATING	
INDUCTIVE	SEA LEVEL --- 3 AMP 50,000 FT. --- 2.5 AMP
RESISTIVE	SEA LEVEL --- 5 AMP 50,000 FT. --- 5 AMP
(A) MAXIMUM INRUSH	24 AMP

SCALE FULL	
DO NOT SCALE PRINT	
UNLESS OTHERWISE SPECIFIED DIMENSIONS ARE IN INCHES	
<b>TOLERANCES ARE:</b>	
ONE PLACE (.0)	±.030
TWO PLACE (.00)	±.018
THREE PLACE (.000)	±.008
ANGLES ±	
WEIGHT .26 OZ. MAX (B)	

FO-80378