

5 Series - Mechanical Latch

2PDT - 4PST, 30 Amp

The 5 series is a 2 coil mechanical latch electrical reset power relay. It is panel mounted with screw terminals, and has 600 volt spacing. The 5 series is supplied with continuous duty coils, and is suitable for applications ranging from supervisory and interlocking functions to control of small motors, heaters, solenoids or for transferring power from a main auxiliary supply or load.

GENERAL SPECIFICATIONS (@ 25° C)

Contacts:

Contact Configuration	Up to 2PDT or 4PST
Contact Material	Silver Alloy
Contact Rating	
120 / 240VAC Resistive	30 Amp
28VDC Resistive	30 Amp
Contact Resistance, Initial	100 milliohms max @ 6VDC

Coil:

Coils Available	AC and DC up to 600V
Nominal Coil Power	15VA 7W
Input Voltage Tolerance - AC	85% to 110% of nominal
Input Voltage Tolerance - DC	80% to 110% of nominal
Drop out voltage	10% of nominal
Duty	Continuous

Timing:

Operate Time (max)	50ms
Release Time (max)	50ms

Dielectric Strength:

Across Open Contacts	1000Vrms
Between Mutally Insulated Points	2200Vrms
Insulation Resistance	10,000 Megohms min @ 500VDC

Temperature:

Operating	-20 to 60°C (-4 to 140°F)
Storage	-40 to 105°C (-40 to 221°F)

Life Expectancy:

Electrical (full load operations)	100,000
Mechanical (no load operations)	500,000

Miscellaneous:

Mounting Position	Any
Enclosure	Open
Weight	47.2oz (1.2 Kg)



Ordering Code **5** **HXX** **46** **H3** **-120VAC**

Series ————— 5

Contact Arrangement —————

AXA (1 N.O., 1 N.C.)
 BXB (2 N.O., 2 N.C.)
 BXX (2 Pole NO)
 HXH (1 N.O. double make)
 XBX (DPDT)

Continuous Duty Coils —————
 (must specify for this option)

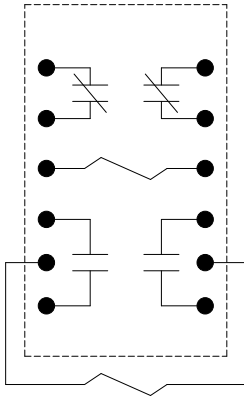
Optional Features —————
 Open style construction-NO CODE

Coil Voltage —————
 AC: 12, 24, 120, 208, 440, 550 (Add VAC)
 DC: 12, 24, 125, 240 (Add VDC)
 Coil voltages and frequencies must be specified

Latching / Sequencing Relays

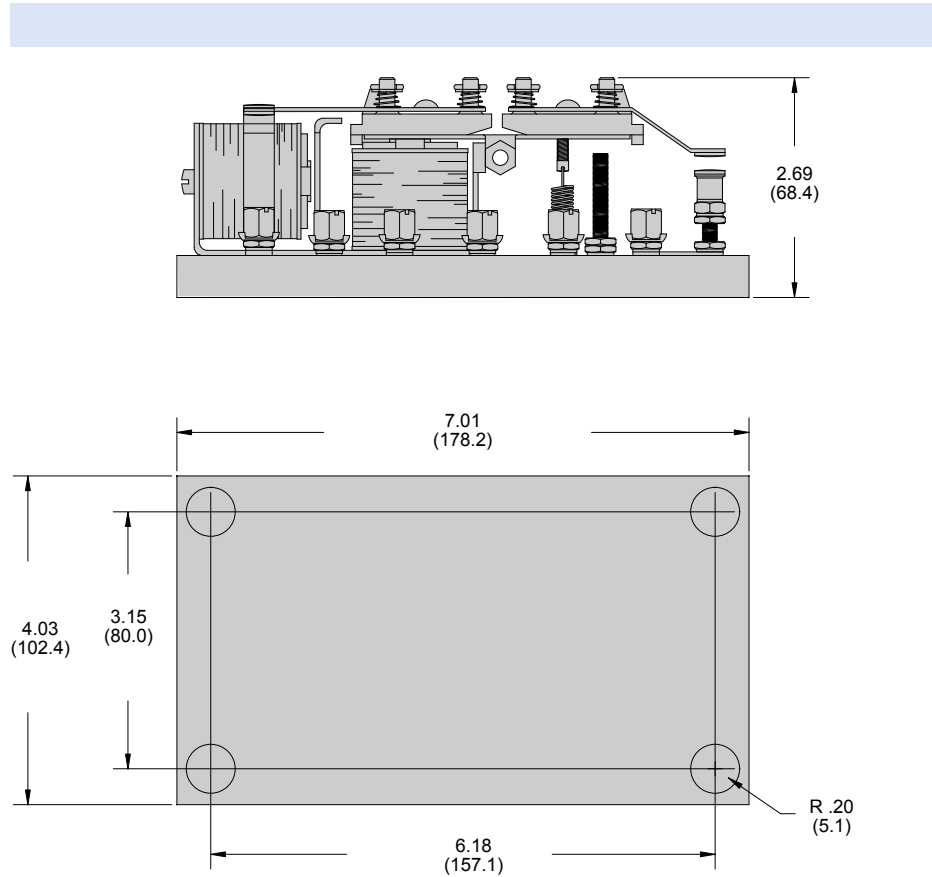
10 - 100 Amp

**BXB Wire Diagram
(Top View)**



Outline Dimensions

Dimensions Shown in inches & (millimeters)



Section 4

Coil Data

Voltage	DC Coils	60hz AC Coils
	Resistance ohms 7 Watts	Impedance ohms 15VA
12	15	9
24	60	38
120	1475	900
208	-	2700
240	6000	3300
440	-	14700
550	-	22000

Contact Specifications

Volts	Double Break Contacts			Single Break Contacts		
	24V	120V	240V	24V	120V	240V
AC (Amps)	30	30	30	30	30	30
DC (Amps)	30	6	3	30	3	0.75

Note: Other coil available on special order, including coils for connection in series with loads up to 30 Amps