

AC Filter, High Symmetrical Attenuation

new



Bolt and nut M4 Case PK

Quick connect terminals 6.3x0.8 mm Case PG

Wire leads Case PI



Description

- Line-filter in standard version
- 1-stage
- high attenuation
- 3 designs
 - N) excellent symmetrical noise attenuation
 - P) high symmetrical noise attenuation
 - Q) standard symmetrical noise attenuation

Unique Selling Proposition

- Excellent symmetrical attenuation
- Compact and cost optimized
- Completely closed steel housing
- Optional wire leads

Approvals

- Approval Reference Type: FMAB NEO
- VDE Certificate Number: 40041643
- UL File Number: E72928

Characteristics

- Compact filter with high symmetrical attenuation
- Designed for universal industrial applications
- Especially designed for applications with symmetrical noise caused by switching semiconductors
- Suitable for use in equipment according to IEC/UL 60950
- Suitable for use in medical equipment according to IEC/UL 60601-1

Other versions on request

- Version with wire connection

Weblinks

[pdf datasheet](#), [html-datasheet](#), [General Product Information](#), [Approvals](#), [CE declaration of conformity](#), [RoHS](#), [CHINA-RoHS](#), [REACH](#), [Distributor-Stock-Check](#), [Detailed request for product](#), [Microsite](#)

Technical Data

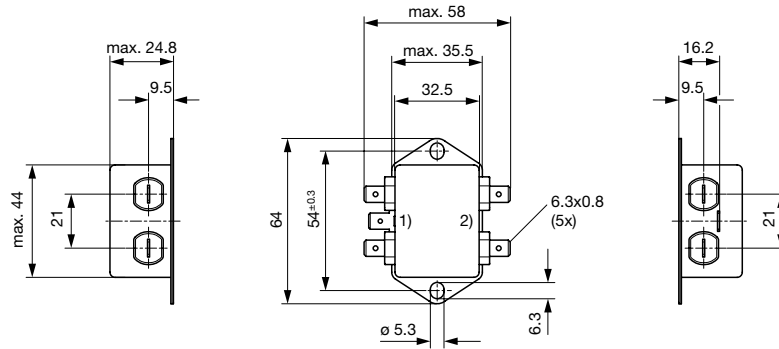
Ratings IEC	1 - 60 A @ Ta 40 °C / 250 VAC; 50 Hz
Ratings UL/CSA	1 - 60 A @ Ta 40 °C / 125/250 VAC; 60 Hz
Leakage Current	industrial < 1 mA (250 V / 60 Hz)
Dielectric Strength	> 1.7 kVDC between L-N > 2.7 kVDC between L/N-PE Test voltage (2 sec)
Allowable Operation Temperature	-40 °C to 100 °C
Climatic Category	40/100/21 acc. to IEC 60068-1
Protection Class	Suitable for appliances with protection class I acc. to IEC 61140
Terminal	Quick connect terminal 6.3 x 0.8 mm Bolt and nut
Material: Housing	Metal

Line Filter	Standard, medical and industrial version, IEC 60939, UL 1283, CSA C22.2 no. 8 Technical Details
MTBF	> 200'000h acc. to MIL-HB-217 F

Detailed information on product approvals, code requirements, usage instructions and detailed test conditions can be looked up in [General Product Information](#)

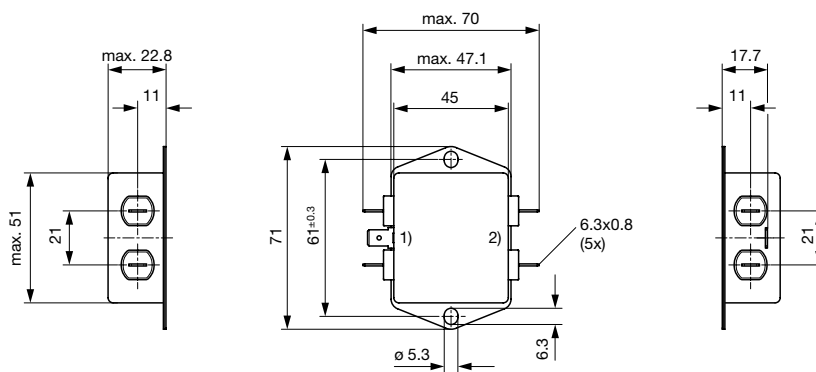
Dimension

Case PG with quick connect terminals



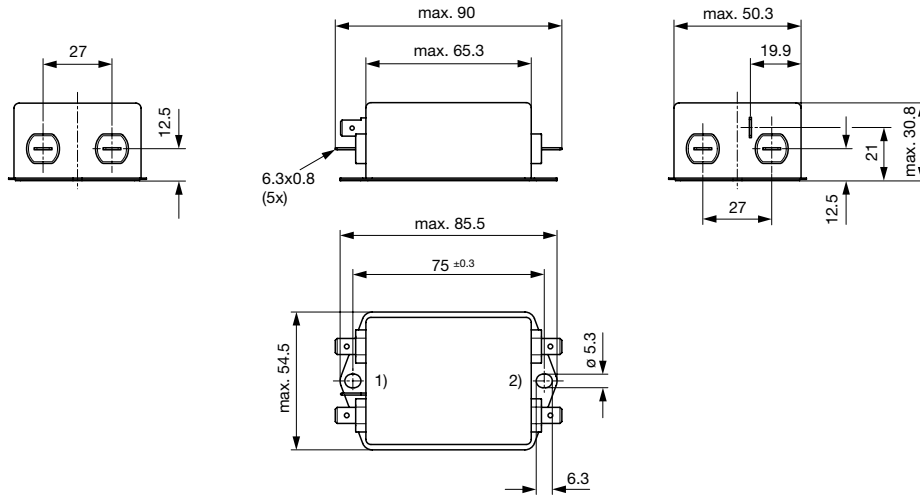
- 1) Line
- 2) Load

Case PH with quick connect terminals



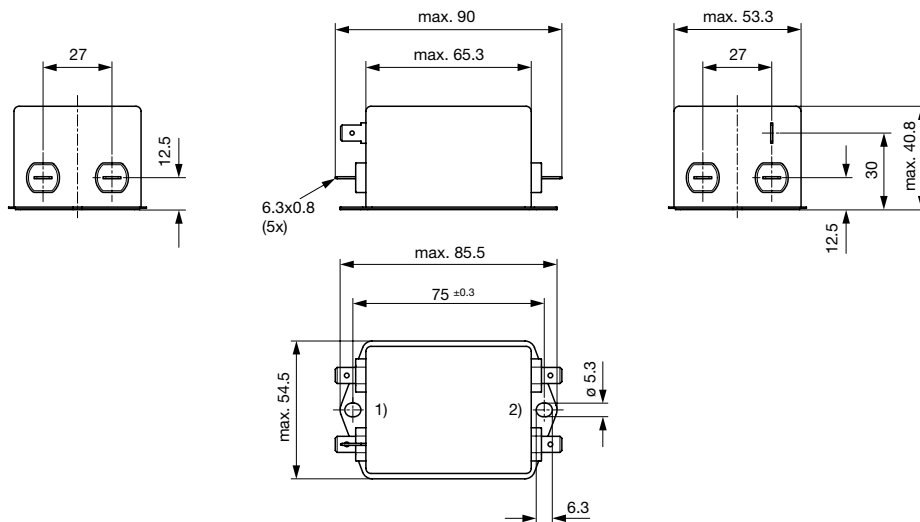
- 1) Line
- 2) Load

Case PI with quick connect terminals



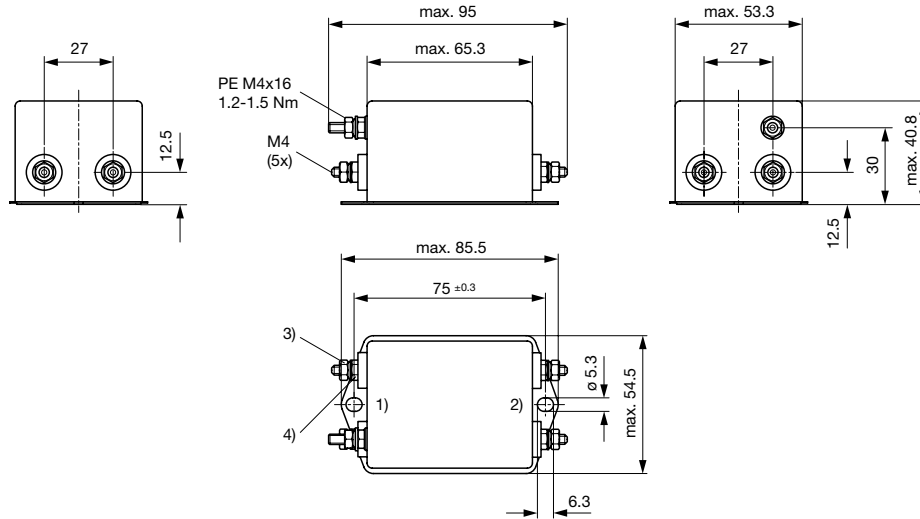
- 1) Line
- 2) Load

Case PK with quick connect terminals



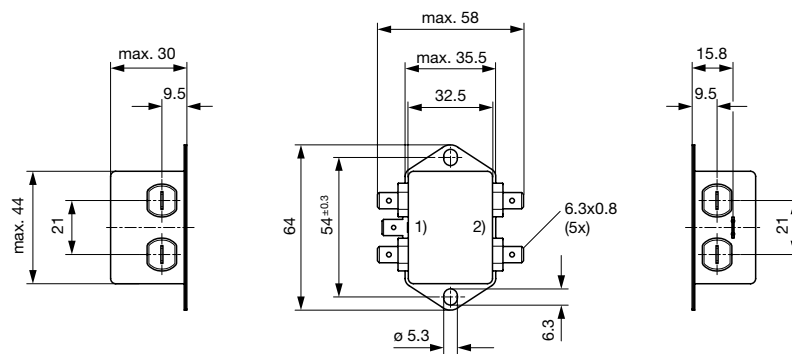
- 1) Line
- 2) Load

Case PK with bolt and nut



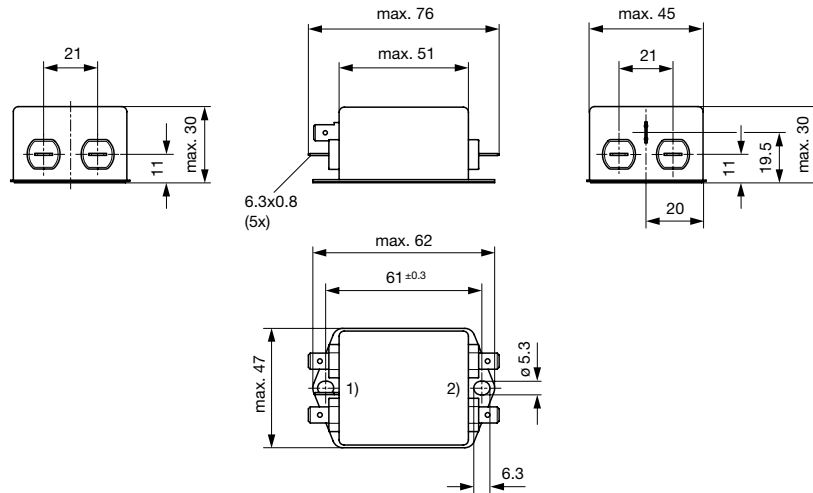
- 1) Line
- 2) Load
- 3) Nut torque 0.8...1 Nm, keep lock-nut fastened
- 4) Lock-nut do not unscrew

Case QC with quick connect terminals



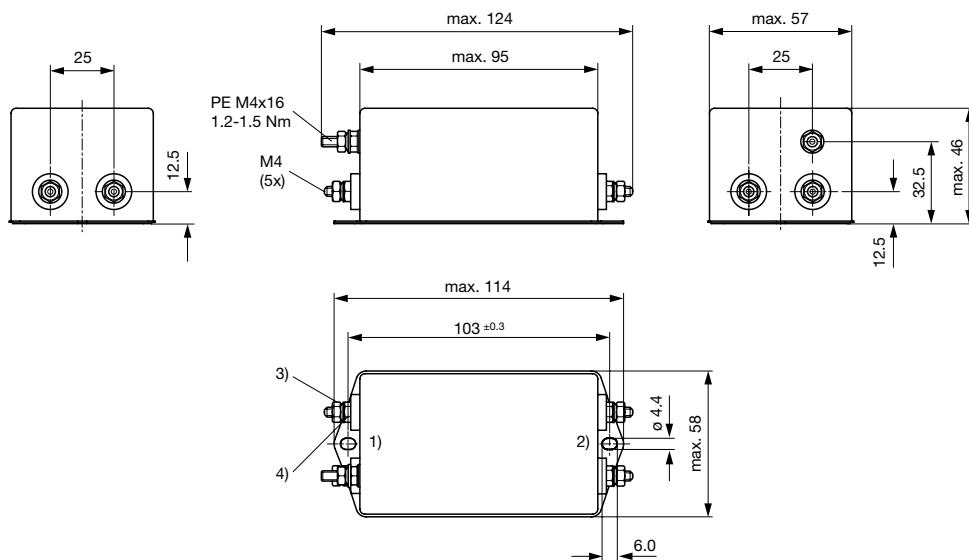
- 1) Line
- 2) Load

Case QD with quick connect terminals



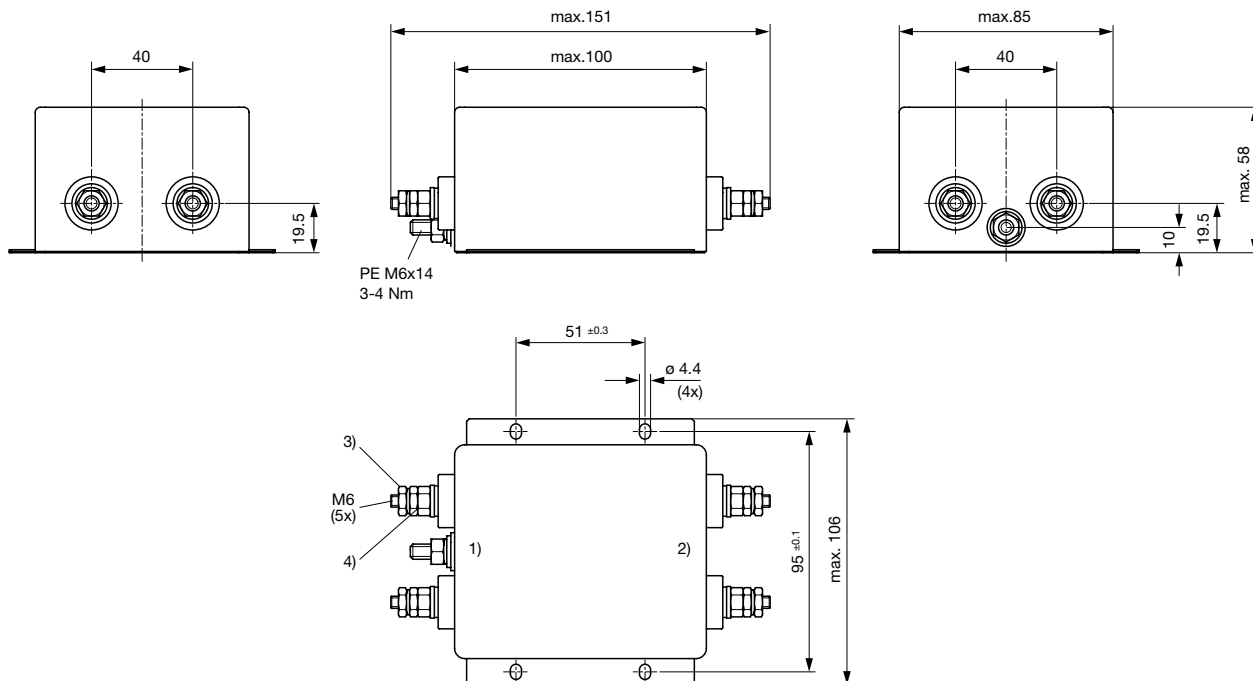
- 1) Line
- 2) Load

Case QE with bolt and nut



- 1) Line
- 2) Load
- 3) Nut torque 0.8...1 Nm, keep lock-nut fastened
- 4) Lock-nut do not unscrew

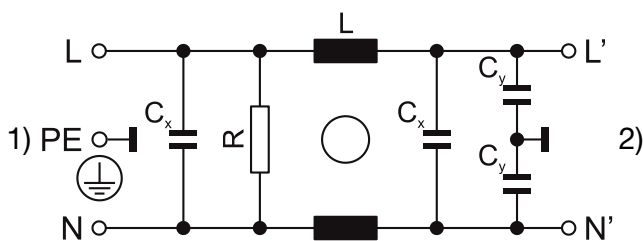
Case QF with bolt and nut



- 1) Line
- 2) Load
- 3) Nut torque 3...4 Nm, keep lock-nut fastened
- 4) Do not unscrew lock-nut

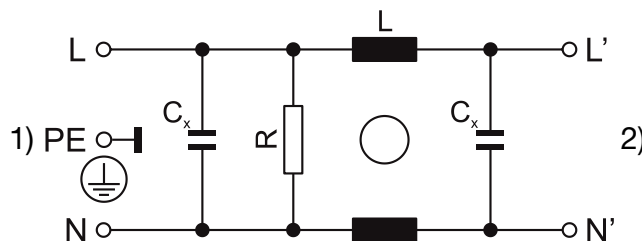
Diagrams

Standard Version or medical M80
Design N, P



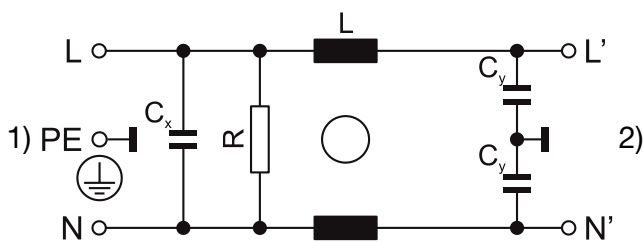
- 1) Line
- 2) Load

Medical version M5
Design N, P



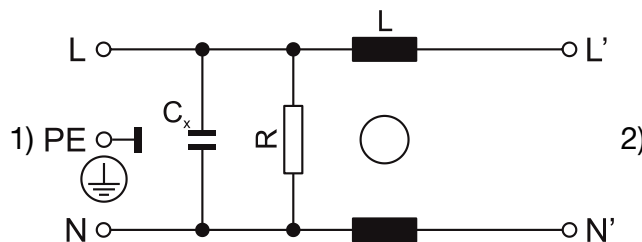
- 1) Line
- 2) Load

Standard Version or medical M80
Design Q



- 1) Line
- 2) Load

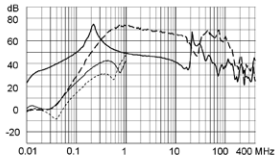
Medical version M5
Design Q



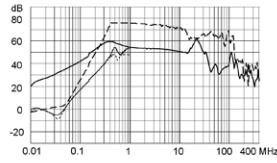
- 1) Line
- 2) Load

Attenuation Loss . . 0.1/100Ω differential mode 100/0.1Ω differential mode - - - - 50Ω differential mode ____ 50Ω common mode
Standard version

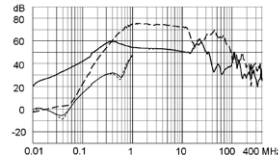
1 A / Design N



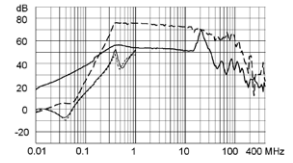
3 A / Design N



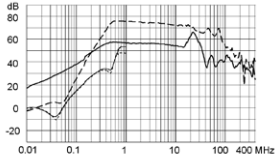
4 A / Design N



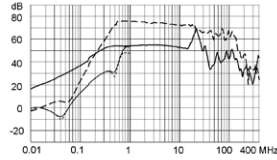
6 A / Design N



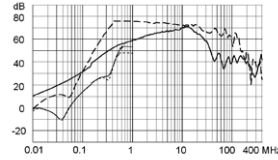
8 A / Design N



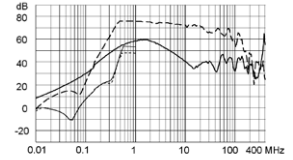
10 A / Design N



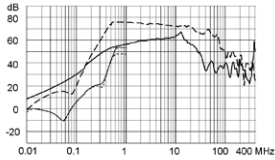
12 A / Design N



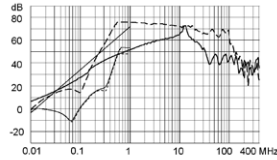
16 A / Design N



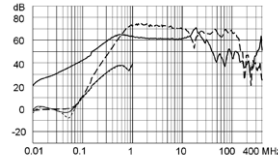
20 A / Design N



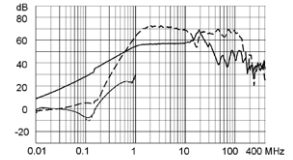
30 A / Design N



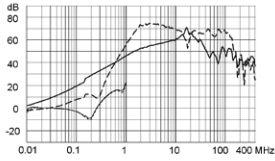
1 A / Design P



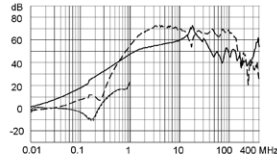
3 A / Design P



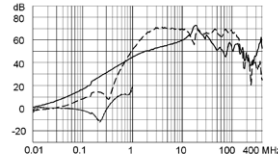
6 A / Design P



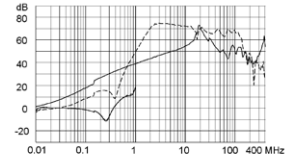
10 A / Design P



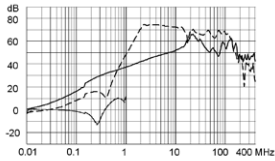
12 A / Design P



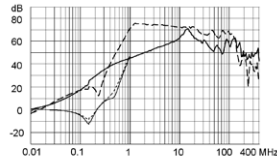
16 A / Design P



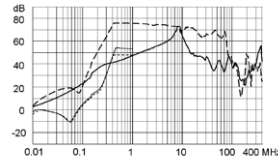
20 A / Design P



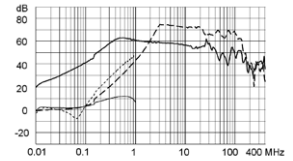
30 A / Design P



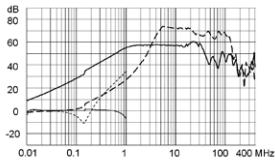
60 A / Design P



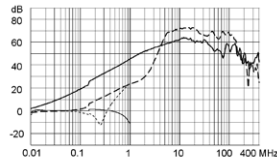
1 A / Design Q



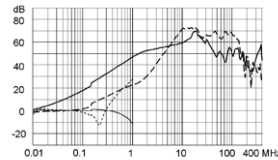
3 A / Design Q



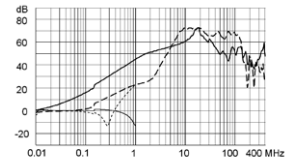
6 A / Design Q



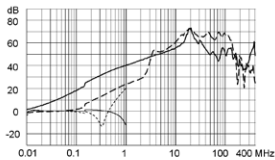
10 A / Design Q



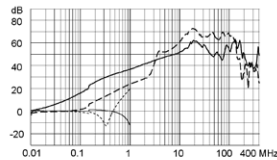
12 A / Design Q



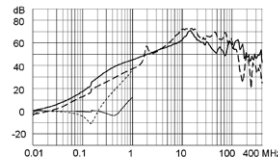
16 A / Design Q



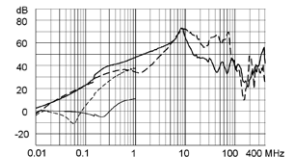
20 A / Design Q



30 A / Design Q

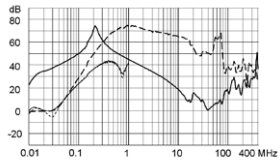


60 A / Design Q

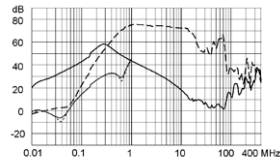


Medical version (M5)

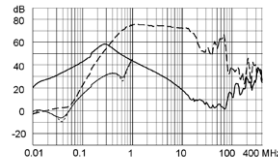
1 A / Design N



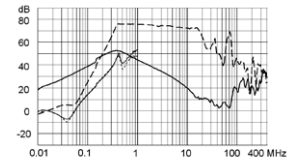
3 A / Design N



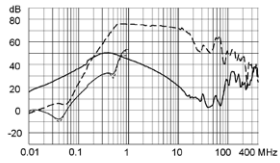
4 A / Design N



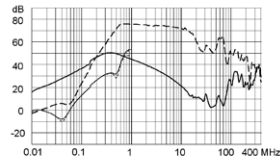
6 A / Design N



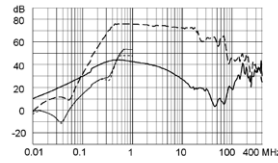
8 A / Design N



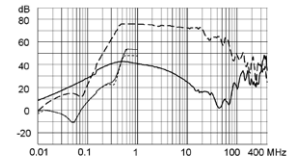
10 A / Design N



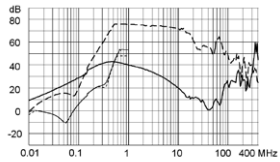
12 A / Design N



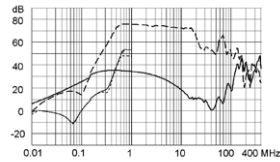
16 A / Design N



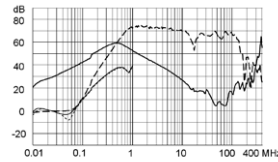
20 A / Design N



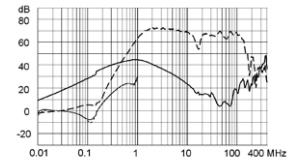
30 A / Design N



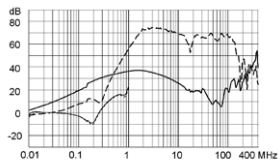
1 A / Design P



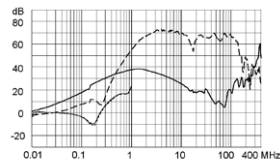
3 A / Design P



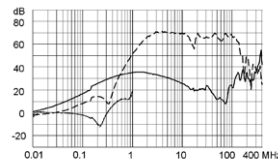
6 A / Design P



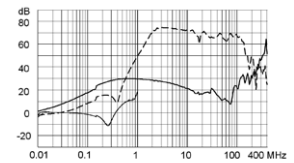
10 A / Design P



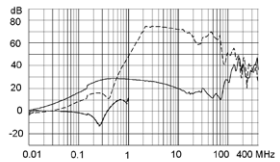
12 A / Design P



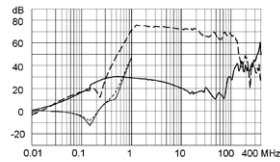
16 A / Design P



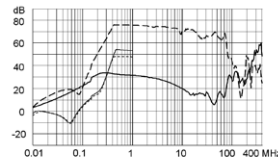
20 A / Design P



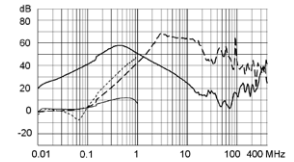
30 A / Design P



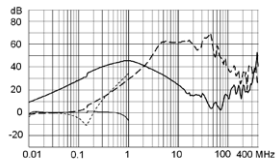
60 A / Design P



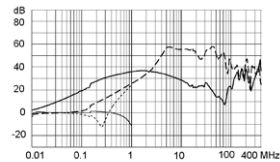
1 A / Design Q



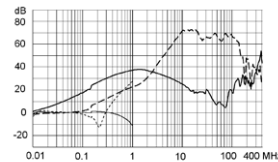
3 A / Design Q



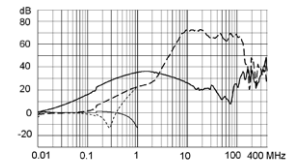
6 A / Design Q



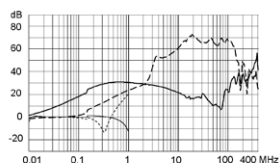
10 A / Design Q



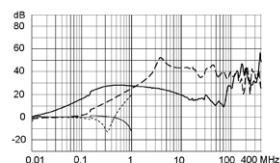
12 A / Design Q



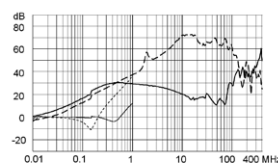
16 A / Design Q



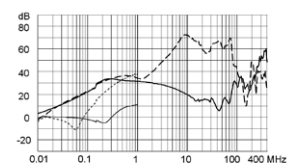
20 A / Design Q



30 A / Design Q

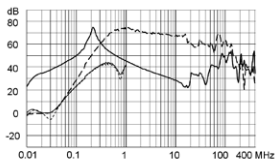


60 A / Design Q

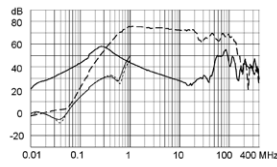


Medical version (M80)

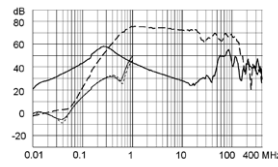
1 A / Design N



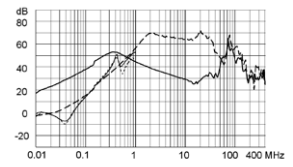
3 A / Design N



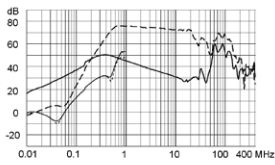
4 A / Design N



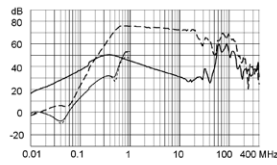
6 A / Design N



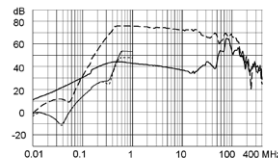
8 A / Design N



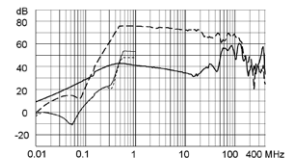
10 A / Design N



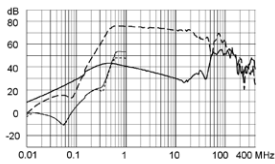
12 A / Design N



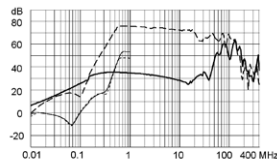
16 A / Design N



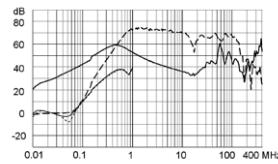
20 A / Design N



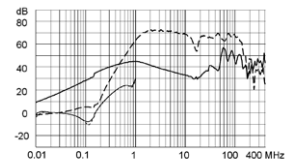
30 A / Design N



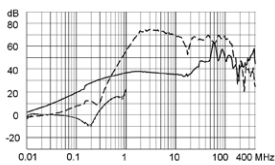
1 A / Design P



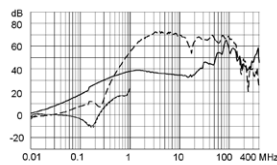
3 A / Design P



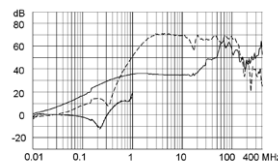
6 A / Design P



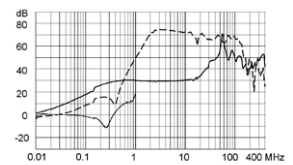
10 A / Design P



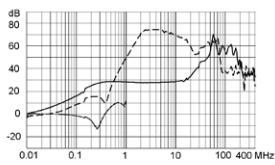
12 A / Design P



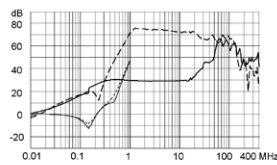
16 A / Design P



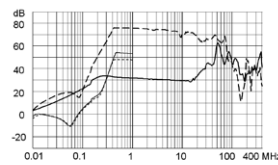
20 A / Design P



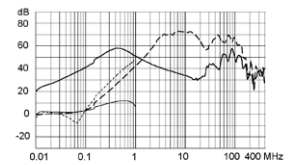
30 A / Design P



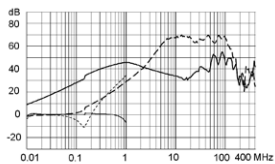
60 A / Design P



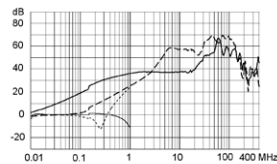
1 A / Design Q



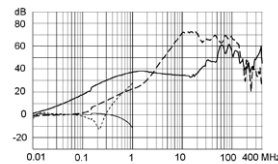
3 A / Design Q



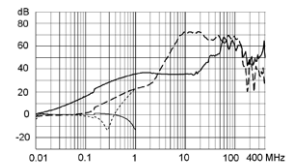
6 A / Design Q



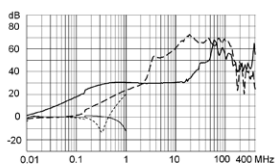
10 A / Design Q



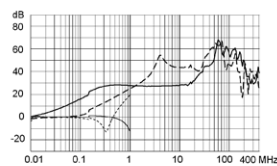
12 A / Design Q



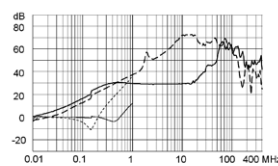
16 A / Design Q



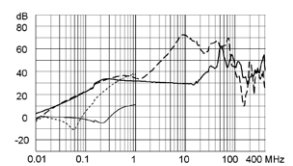
20 A / Design Q



30 A / Design Q



60 A / Design Q



All Variants

Rated current	Filter-Type	Terminal	Design	Leakage	Ri	Power Loss	Weight	Housings	Packaging	Order Number
[A]				[mA]	[mΩ]	[W]	[g]		[ST]	
1	Standard Version	Quick connect terminal 6.3 x 0.8 mm	N	0.5	475	1	72 g	PG	15	5500.2630.01
3	Standard Version	Quick connect terminal 6.3 x 0.8 mm	N	0.5	83	1.5	104 g	PH	15	5500.2631.01
4	Standard Version	Quick connect terminal 6.3 x 0.8 mm	N	0.5	53	1.7	108 g	PH	15	5500.2632.01
6	Standard Version	Quick connect terminal 6.3 x 0.8 mm	N	0.5	32.5	2.4	109 g	PH	15	5500.2633.01
8	Standard Version	Quick connect terminal 6.3 x 0.8 mm	N	0.5	29.2	3.8	190 g	PI	10	5500.2634.01
1	Standard Version	Quick connect terminal 6.3 x 0.8 mm	P	0.5	320	0.65	80 g	QC	15	5500.2640.01
3	Standard Version	Quick connect terminal 6.3 x 0.8 mm	P	0.5	36	0.65	81 g	QC	15	5500.2641.01
6	Standard Version	Quick connect terminal 6.3 x 0.8 mm	P	0.5	12	0.86	80 g	QC	15	5500.2642.01
10	Standard Version	Quick connect terminal 6.3 x 0.8 mm	P	0.5	5	1	87 g	QC	15	5500.2643.01
12	Standard Version	Quick connect terminal 6.3 x 0.8 mm	P	0.5	4	1.2	92 g	QC	15	5500.2644.01
16	Standard Version	Quick connect terminal 6.3 x 0.8 mm	P	0.5	2	1	138 g	QD	15	5500.2645.01
20	Standard Version	Quick connect terminal 6.3 x 0.8 mm	P	0.5	1.9	1.5	206 g	PI	10	5500.2646.01
1	Standard Version	Quick connect terminal 6.3 x 0.8 mm	Q	0.5	320	0.65	66 g	PG	15	5500.2650.01
3	Standard Version	Quick connect terminal 6.3 x 0.8 mm	Q	0.5	36	0.65	70 g	PG	15	5500.2651.01
6	Standard Version	Quick connect terminal 6.3 x 0.8 mm	Q	0.5	12	0.86	100 g	PG	15	5500.2652.01
10	Standard Version	Quick connect terminal 6.3 x 0.8 mm	Q	0.5	5	1	90 g	QC	15	5500.2653.01
12	Standard Version	Quick connect terminal 6.3 x 0.8 mm	Q	0.5	4	1.2	90 g	QC	15	5500.2654.01
16	Standard Version	Quick connect terminal 6.3 x 0.8 mm	Q	0.5	2	1	136 g	QD	15	5500.2655.01
20	Standard Version	Quick connect terminal 6.3 x 0.8 mm	Q	0.5	1.9	1.5	204 g	PI	10	5500.2656.01
10	Industrial Version	Quick connect terminal 6.3 x 0.8 mm	N	1	22.8	4.6	200 g	PI	10	5500.2635.01
12	Industrial Version	Quick connect terminal 6.3 x 0.8 mm	N	1	13.2	3.8	201 g	PI	10	5500.2636.01
16	Industrial Version	Quick connect terminal 6.3 x 0.8 mm	N	1	7.2	3.7	308 g	PK	10	5500.2637.01
20	Industrial Version	Quick connect terminal 6.3 x 0.8 mm	N	1	6.0	4.8	322 g	PK	10	5500.2638.01
30	Industrial Version	Bolt and nut M4	N	1	2.9	5.2	355 g	PK	10	5500.2639.03
30	Industrial Version	Bolt and nut M4	P	1	1	1.8	450 g	QE	5	5500.2647.03
60	Industrial Version	Bolt and nut M6	P	1	1	7.2	1220 g	QF	1	5500.2648.03
30	Industrial Version	Bolt and nut M4	Q	1	1	1.8	450 g	QE	5	5500.2657.03
60	Industrial Version	Bolt and nut M6	Q	1	1	7.2	1220 g	QF	1	5500.2658.03
1	Medical (M5)	Quick connect terminal 6.3 x 0.8 mm	N	0.005	475	1	72 g	PG	15	5500.2630.04
3	Medical (M5)	Quick connect terminal 6.3 x 0.8 mm	N	0.005	83	1.5	104 g	PH	15	5500.2631.04
4	Medical (M5)	Quick connect terminal 6.3 x 0.8 mm	N	0.005	53	1.7	108 g	PH	15	5500.2632.04
6	Medical (M5)	Quick connect terminal 6.3 x 0.8 mm	N	0.005	32.5	2.4	109 g	PH	15	5500.2633.04
8	Medical (M5)	Quick connect terminal 6.3 x 0.8 mm	N	0.005	29.2	3.8	190 g	PI	10	5500.2634.04
10	Medical (M5)	Quick connect terminal 6.3 x 0.8 mm	N	0.005	22.8	4.6	200 g	PI	10	5500.2635.04
12	Medical (M5)	Quick connect terminal 6.3 x 0.8 mm	N	0.005	13.2	3.8	201 g	PI	10	5500.2636.04
16	Medical (M5)	Quick connect terminal 6.3 x 0.8 mm	N	0.005	7.2	3.7	308 g	PK	10	5500.2637.04
20	Medical (M5)	Quick connect terminal 6.3 x 0.8 mm	N	0.005	6.0	4.8	322 g	PK	10	5500.2638.04
30	Medical (M5)	Bolt and nut M4	N	0.005	2.9	5.2	355 g	PK	10	5500.2639.06
1	Medical (M5)	Quick connect terminal 6.3 x 0.8 mm	P	0.005	320	0.65	80 g	QC	15	5500.2640.04
3	Medical (M5)	Quick connect terminal 6.3 x 0.8 mm	P	0.005	36	0.65	81 g	QC	15	5500.2641.04
6	Medical (M5)	Quick connect terminal 6.3 x 0.8 mm	P	0.005	12	0.86	80 g	QC	15	5500.2642.04
10	Medical (M5)	Quick connect terminal 6.3 x 0.8 mm	P	0.005	5	1	87 g	QC	15	5500.2643.04
12	Medical (M5)	Quick connect terminal 6.3 x 0.8 mm	P	0.005	4	1.2	92 g	QC	15	5500.2644.04
16	Medical (M5)	Quick connect terminal 6.3 x 0.8 mm	P	0.005	2	1	138 g	QD	15	5500.2645.04
20	Medical (M5)	Quick connect terminal 6.3 x 0.8 mm	P	0.005	1.9	1.5	206 g	PI	10	5500.2646.04
30	Medical (M5)	Bolt and nut M4	P	0.005	1	1.8	450 g	QE	5	5500.2647.06
60	Medical (M5)	Bolt and nut M6	P	0.005	1	7.2	1220 g	QF	1	5500.2648.06
1	Medical (M5)	Quick connect terminal 6.3 x 0.8 mm	Q	0.005	320	0.65	66 g	PG	15	5500.2650.04
3	Medical (M5)	Quick connect terminal 6.3 x 0.8 mm	Q	0.005	36	0.65	70 g	PG	15	5500.2651.04
6	Medical (M5)	Quick connect terminal 6.3 x 0.8 mm	Q	0.005	12	0.86	100 g	PG	15	5500.2652.04
10	Medical (M5)	Quick connect terminal 6.3 x 0.8 mm	Q	0.005	5	1	90 g	QC	15	5500.2653.04
12	Medical (M5)	Quick connect terminal 6.3 x 0.8 mm	Q	0.005	4	1.2	90 g	QC	15	5500.2654.04
16	Medical (M5)	Quick connect terminal 6.3 x 0.8 mm	Q	0.005	2	1	136 g	QD	15	5500.2655.04

Rated current [A]	Filter-Type	Terminal	Design	Leakage [mA]	Ri [mΩ]	Power Loss [W]	Weight [g]	Housings	Packaging [ST]	Order Number
20	Medical (M5)	Quick connect terminal 6.3 x 0.8 mm	Q	0.005	1.9	1.5	204g	PI	10	5500.2656.04
30	Medical (M5)	Bolt and nut M4	Q	0.005	1	1.8	450g	QE	5	5500.2657.06
60	Medical (M5)	Bolt and nut M6	Q	0.005	1	7.2	1220g	QF	1	5500.2658.06
1	Medical (M80)	Quick connect terminal 6.3 x 0.8 mm	N	0.08	475	1	72g	PG	15	5500.2630.07
3	Medical (M80)	Quick connect terminal 6.3 x 0.8 mm	N	0.08	83	1.5	104g	PH	15	5500.2631.07
4	Medical (M80)	Quick connect terminal 6.3 x 0.8 mm	N	0.08	53	1.7	108g	PH	15	5500.2632.07
6	Medical (M80)	Quick connect terminal 6.3 x 0.8 mm	N	0.08	32.5	2.4	109g	PH	15	5500.2633.07
8	Medical (M80)	Quick connect terminal 6.3 x 0.8 mm	N	0.08	29.2	3.8	190g	PI	10	5500.2634.07
10	Medical (M80)	Quick connect terminal 6.3 x 0.8 mm	N	0.08	22.8	4.6	200g	PI	10	5500.2635.07
12	Medical (M80)	Quick connect terminal 6.3 x 0.8 mm	N	0.08	13.2	3.8	201g	PI	10	5500.2636.07
16	Medical (M80)	Quick connect terminal 6.3 x 0.8 mm	N	0.08	7.2	3.7	308g	PK	10	5500.2637.07
20	Medical (M80)	Quick connect terminal 6.3 x 0.8 mm	N	0.08	6.0	4.8	322g	PK	10	5500.2638.07
30	Medical (M80)	Bolt and nut M4	N	0.08	2.9	5.2	355g	PK	10	5500.2639.09
1	Medical (M80)	Quick connect terminal 6.3 x 0.8 mm	P	0.08	320	0.65	80g	QC	15	5500.2640.07
3	Medical (M80)	Quick connect terminal 6.3 x 0.8 mm	P	0.08	36	0.65	81g	QC	15	5500.2641.07
6	Medical (M80)	Quick connect terminal 6.3 x 0.8 mm	P	0.08	12	0.86	80g	QC	15	5500.2642.07
10	Medical (M80)	Quick connect terminal 6.3 x 0.8 mm	P	0.08	5	1	87g	QC	15	5500.2643.07
12	Medical (M80)	Quick connect terminal 6.3 x 0.8 mm	P	0.08	4	1.2	92g	QC	15	5500.2644.07
16	Medical (M80)	Quick connect terminal 6.3 x 0.8 mm	P	0.08	2	1	138g	QD	15	5500.2645.07
20	Medical (M80)	Quick connect terminal 6.3 x 0.8 mm	P	0.08	1.9	1.5	206g	PI	10	5500.2646.07
30	Medical (M80)	Bolt and nut M4	P	0.08	1	1.8	450g	QE	5	5500.2647.09
60	Medical (M80)	Bolt and nut M6	P	0.08	1	7.2	1220g	QF	1	5500.2648.09
1	Medical (M80)	Quick connect terminal 6.3 x 0.8 mm	Q	0.08	320	0.65	66g	PG	15	5500.2650.07
3	Medical (M80)	Quick connect terminal 6.3 x 0.8 mm	Q	0.08	36	0.65	70g	PG	15	5500.2651.07
6	Medical (M80)	Quick connect terminal 6.3 x 0.8 mm	Q	0.08	12	0.86	100g	PG	15	5500.2652.07
10	Medical (M80)	Quick connect terminal 6.3 x 0.8 mm	Q	0.08	5	1	90g	QC	15	5500.2653.07
12	Medical (M80)	Quick connect terminal 6.3 x 0.8 mm	Q	0.08	4	1.2	90g	QC	15	5500.2654.07
16	Medical (M80)	Quick connect terminal 6.3 x 0.8 mm	Q	0.08	2	1	136g	QD	15	5500.2655.07
20	Medical (M80)	Quick connect terminal 6.3 x 0.8 mm	Q	0.08	1.9	1.5	204g	PI	10	5500.2656.07
30	Medical (M80)	Bolt and nut M4	Q	0.08	1	1.8	450g	QE	5	5500.2657.09
60	Medical (M80)	Bolt and nut M6	Q	0.08	1	7.2	1220g	QF	1	5500.2658.09

Most Popular.

Availability for all products can be searched real-time: <http://www.schurter.com/en/Stock-Check/Stock-Check-SCHURTER>

- 3 designs N) excellent symmetrical noise attenuation
- P) high symmetrical noise attenuation
- Q) standard symmetrical noise attenuation