

Compression Connectors for Copper Conductor

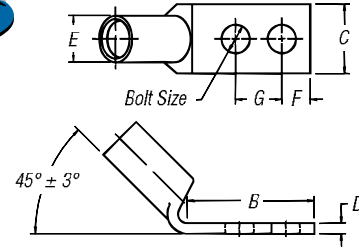
Two-Hole Lugs — 45° Long Barrel 600V to 35kV

Material: High-Conductivity
Wrought Copper

Finish: Electro Tin Plate



Peep Holes Available!
Add suffix **-PH**



CAT. NO.	CODE	WIRE SIZE		DIMENSIONS (IN.)							DIE CODE	DIE COLOR
		FLEX CLASS	G, H, I, K, M*	BOLT SIZE	B	C	D	E	F	G		
256-31426-3SPHUF				#10	1.25	.37	.07	.20	1/2	3/4	ERG4002, ERG4005	"C" NEST
256-30695-1298UF	#14-10 AWG			1/4	1.22	.50	.05	.20	1/4	3/4		
256-30695-1055UF				1/4	1.31	.50	.13	.36	1/4	3/4		
54850BEUF		37/24 = 14.9 kcmil		1/4	1.89	.42	.07	.26	1/4	3/4	21	RED
54851BEUF	#8 AWG	#8 Weld		1/4	1.29	.47	.06	.26	1/4	3/4	21	
54851BEUF0612		23 Navy		3/8	1.42	.47	.06	.26	3/8	3/4	21	
54852BEUF		30 Navy		1/4	1.28	.44	.08	.30	1/4	3/4	24	BLUE
54852BEUF0416		61/24 = 24.6 kcmil		1/4	1.63	.43	.08	.30	1/4	1	24	
54852BEUF0412	#6 AWG	#6 Weld		1/4	1.43	.43	.08	.30	1/4	3/4	24	
54852BEUF0616		#5 Weld		3/8	1.93	.59	.06	.30	3/8	1	24	
54852BEUF0828		#5 Weld		1/2	3.00	.88	.11	.30	1/2	1 1/4	24	
54854BEUF				1/4	1.19	.52	.10	.37	1/4	3/4	29	GRAY
54854BEUF0412		40-50 Navy		1/4	1.31	.56	.09	.37	1/4	3/4	29	
54854BEUF0416	#4 AWG	#5, 91/24 = 36.7 kcmil		1/4	1.88	.58	.09	.37	3/8	1	29	
54854BEUF0516		#4 Weld		5/16	1.75	.56	.10	.37	11/32	1	29	
54854BEUF0616				3/8	1.98	.59	.09	.37	3/8	1	29	
54854BEUF0828				1/2	3.00	.88	.09	.37	1/2	1 1/4	29	
54855BEUF0416				1/4	1.88	.67	.09	.41	3/8	1	33	
54855BEUF				1/4	1.28	.59	.11	.41	1/4	3/4	33	BROWN
54855BEUF0412		60 Navy		1/4	1.35	.68	.11	.41	1/4	3/4	33	
54856BEUF	#2-3 AWG	#3 Weld		5/16	1.63	.59	.11	.41	3/8	3/4	33	
54810BEUF		125/24 = 50.4 kcmil		3/8	2.57	.59	.11	.41	3/8	1 1/4	33	
54810BEUF0616				3/8	1.94	.59	.11	.41	3/8	1	33	
54811BEUF				1/2	3.00	.88	.11	.41	1/2	1 1/4	33	
54809BEUF		75 Navy		1/4	1.19	.67	.11	.47	1/4	3/4	37	GREEN
54812BEUF		150/24 = 60.5 kcmil		1/4	1.40	.67	.11	.47	1/4	3/4	37	
54858BEUF	#1 AWG	175/24 = 70.6 kcmil,		5/16	1.63	.67	.11	.47	3/8	3/4	37	
54857BEUF0616		#2 Weld		3/8	1.98	.67	.11	.47	3/8	1	37	
54857BEUF				1/2	3.00	.88	.11	.47	1/2	1 1/4	37	
54859BEUF0416				1/4	1.88	.75	.13	.52	3/8	1	42	PINK
54859BEUF0416PH				1/4	1.88	.75	.13	.52	3/8	1	42	
54859BEUF		100 Navy		1/4	1.19	.75	.13	.52	1/4	3/4	42	
54813BEUF	1/0 AWG	#1 Weld		1/4	1.38	.75	.13	.52	1/4	3/4	42	
54860BEUF		225/24 = 90.8 kcmil		5/16	1.63	.75	.13	.52	3/8	3/4	42	
54860BEUF0616				3/8	1.98	.75	.13	.52	3/8	1	42	
54860BEUF0616PH				3/8	1.93	.75	.13	.52	3/8	1	42	
54860BEUF0828				1/2	3.00	.75	.13	.52	3/8	1 1/4	42	
54814BEUF				1/4	1.25	.83	.13	.57	1/4	3/4	45	BLACK
54814BEUF0412		125 Navy		1/4	1.31	.81	.13	.57	1/4	3/4	45	
54862BEUF0616	2/0 AWG	275/24 = 111 kcmil		3/8	1.81	.83	.13	.57	3/8	1	45	
54862BEUF0616PH		1/0 Weld		3/8	1.81	.83	.13	.57	3/8	1	45	
54862BEUF				1/2	2.81	.83	.13	.57	1/2	1 1/4	45	

* Contact Technical Services for specific stranding listings

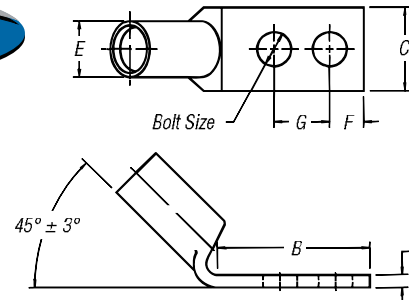
Tooling: pp. F-80-F-100 Die Selector Chart: pp. F-101-F-104

Connectors & Grounding — Blackburn® Compression Connectors Featuring the Color-Keyed® System

Compression Connectors for Copper Conductor

Two-Hole Lugs — 45° Long Barrel 600V to 35kV (continued)

Material: High-Conductivity
Wrought Copper
Finish: Electro Tin Plate



CAT. NO.	WIRE SIZE			DIMENSIONS (IN.)							DIE CODE	DIE COLOR
	CODE	FLEX CLASS G, H, I, K, M†	BOLT SIZE	B	C	D	E	F	G			
54815BEUF		2/0 Weld	¼	1.45	.92	.13	.63	¼	¾	50	ORANGE	
54816BEUF	3/0 AWG	325/24 = 131 kcmil	¾	1.63	.92	.13	.63	¾	1	50		
54864BEUF		150 Navy	½	3.00	.94	.13	.63	½	1¼	50		
54817BEUF			¼	1.38	1.03	.14	.70	¼	¾	54	PURPLE	
54818BEUF		200 Navy	¾	2.63	1.03	.14	.70	¾	1¼	54		
54818BEUF0616	4/0 AWG	450/24 = 182 kcmil	¾	1.81	1.03	.14	.70	¾	1	54		
54818BEUF0616PH		3/0 Weld	¾	1.88	1.03	.14	.70	¾	1	54	YELLOW	
54866BEUF			½	3.00	1.03	.14	.70	½	1¼	54		
54868BEUF0616		250 Navy	¾	1.93	1.13	.14	.77	¾	1	62		
54868BEUF0616PH	250 kcmil	550/24 = 222 kcmil	¾	1.93	1.13	.14	.77	¾	1	62	WHITE	
54868BEUF		4/0 Weld	½	3.00	1.13	.14	.77	½	1¼	62		
54819BEUF		300 Navy	¾	2.80	1.25	.15	.85	¾	1	66		
54870BEUF	300 kcmil	250 Weld, 262, 650/24	½	3.00	1.25	.15	.85	½	1¼	66	RED	
54820BEUF			¼	1.93	1.36	.18	.93	¼	¾	71		
54872BEUF0616			¾	1.93	1.36	.18	.93	¾	1	71		
54872BEUF0616PH	350 kcmil		¾	1.93	1.36	.18	.93	¾	1	71	BLUE	
54872BEUF			½	3.00	1.36	.18	.93	½	1¼	71		
54822BEUF		400 Navy	¼	1.93	1.41	.17	.96	¼	¾	76		
54821BEUF	400 kcmil	775/24 = 313 kcmil	¾	1.93	1.41	.17	.96	¾	1	76	BROWN	
54874BEUF			½	3.00	1.41	.17	.96	½	1¼	76		
54823BEUF		400 Weld, G, H, I	¼	1.94	1.61	.22	1.10	¼	¾	87		
54876BEUF0616	500 kcmil	925/24 = 373 kcmil	¾	1.93	1.61	.22	1.10	¾	1	87	GREEN	
54876BEUF0616PH		350, K	¾	1.93	1.61	.22	1.10	¾	1	87		
54876BEUF			½	3.00	1.61	.22	1.10	½	1¼	87		
54824BEUF		450 Weld, I, K	¾	2.80	1.75	.24	1.20	¾	1	94	BLACK	
54878BEUF	600 kcmil	1100/24 = 444 kcmil	½	3.00	1.75	.24	1.20	½	1¼	94		
54880BEUF0616		500, G, H, I, K	¾	2.06	1.94	.27	1.33	½	1	106		
54880BEUF0616PH	750 kcmil	1325/24 = 535 kcmil	¾	2.06	1.94	.27	1.33	½	1	106	YELLOW	
54880BEUF			½	3.00	1.94	.27	1.33	½	1¼	106		
58884BEUF		1600/24 = 646 kcmil	½	3.00	1.94	.27	1.33	½	1¼	106		
58826BEUF	900 kcmil	1925/24 = 777 kcmil	½	3.00	2.18	.31	1.50	½	1¼	115	N/A	
54826BEUF			¾	2.80	2.27	.30	1.55	¾	1	125		
54882BEUF	1000 kcmil	1000 Navy	½	3.00	2.27	.30	1.55	½	1¼	125		

† Contact Technical Services for specific stranding listings

Tooling: pp. F-80-F-100 Die Selector Chart: pp. F-101-F-104

Overview

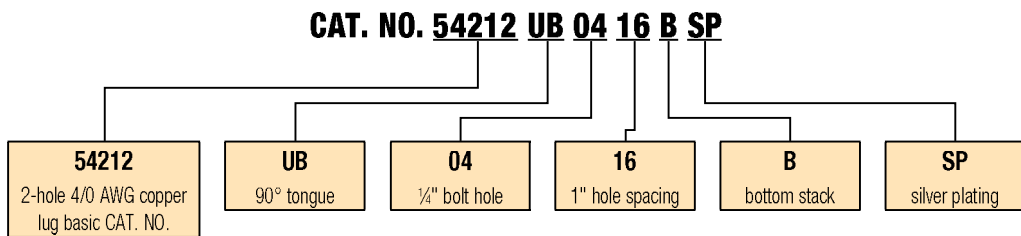
Order Form

Catalog No. _____ Qty. _____
 (For 54100, 54200, 54800 & 54900 Series Copper Lugs Only)

Design Controls and Requirements

All "MADE-UP" catalog numbers start with a standard or basic catalog number and are followed by the customer-required extra features: tongue shape, bolt hole size, distance between bolt holes, stacking, plating and inspection hole (peep hole). A code letter or a number has been assigned to each extra feature. See CODE TABLE.

- Notes:** 1) Lack of any of the extra features on the "MADE-UP" catalog number means that the standard Cat. No. features are prevalent.
 2) If either bolt hole size or distance between bolt holes needs to be changed from standard Cat. No., both code numbers will appear on the "MADE-UP" Cat. No. (See example below)



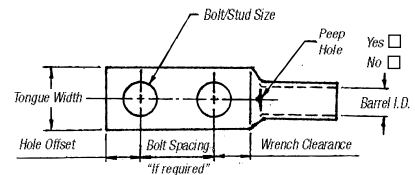
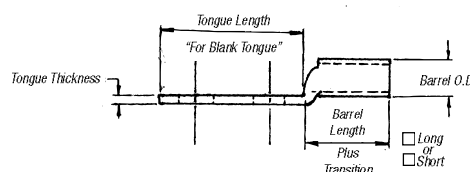
Code Table

TONGUE SHAPE		BOLT HOLES		BOLT HOLE CENTERS		STACKING		FINISH (PLATING)		INSPECTION HOLE (LONG BARREL)		INSPECTION HOLE (SHORT BARREL)		
TYPE	CODE	SIZE	.020	CODE	DISTANCE .015	CODE	TYPE	CODE	TYPE 1	CODE	I.D.	CODE	I.D.	CODE
15°	UI	#8	.173	02	1/2"	08	Top	T**	Silver Plate	SP	Peep Hole	PH	Blind End	BE
30°	UT	#10	.204	03	5/8"	10	Bottom	B	Lead Plate	LP				
45°	UF	1/4"	.281	04	3/4"	12			Nickel Plate	NP				
60°	US	5/16"	.344	05	1/2"	14			Plain Finish	PF				
90°	UB	3/8"	.406	06	1"	16			No Marking	NM				
Blank	BT	1/2"	.531	08	1 1/8"	18			Not QTP if					
(No Bolt Hole)		5/8"	.656	10	1 1/4"	20			suffix other					
		3/4"	.812	12	1 3/8"	22			than - PF or					
		7/8"	.937	14	1 1/2"	24			standard					
		1"	1.062	16	1 5/8"	26			tin plate					
					1 3/4"	28								
					1 7/8"	30								
					2"	32								

* These bolt centers not available for bolt holes larger than 3/8".

** Not required for 45° & 90° top stacking.

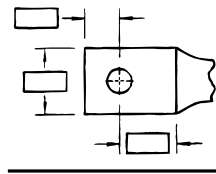
Cable	Code <input type="checkbox"/>	
	Weld <input type="checkbox"/>	
<input type="checkbox"/> #8	<input type="checkbox"/> #6	<input type="checkbox"/> #4
<input type="checkbox"/> #2	<input type="checkbox"/> #1	<input type="checkbox"/> 1/0
<input type="checkbox"/> 2/0	<input type="checkbox"/> 3/0	<input type="checkbox"/> 4/0
<input type="checkbox"/> 250 kcmil & up (Code Only)		



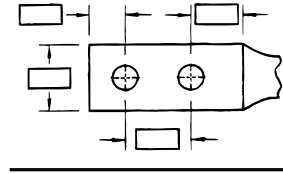
Overview

Tongue Specifications — See Chart "A" For Dimensions

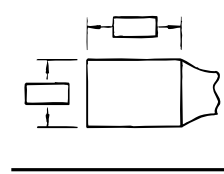
Stud Sizes		
<input type="checkbox"/> #8	<input type="checkbox"/> #10	<input type="checkbox"/> ¼"
<input type="checkbox"/> ⅜"	<input type="checkbox"/> ⅝"	<input type="checkbox"/> ½"
<input type="checkbox"/> ⅞"	<input type="checkbox"/> ¾"	<input type="checkbox"/> ⅝"
<input type="checkbox"/> 1"		



Single Hole



Double Hole



Blank

Chart A

NOMINAL BOLT HOLE SIZE .015	HOLE OFFSET .030	WRENCH CLEARANCE MIN.	TONGUE WIDTH CABLE SIZE										
			#8 CODE #8 WELD	#6 CODE #6 WELD	#4 CODE #4 WELD	#2 CODE #2 WELD	#1 CODE #1 WELD	1/0 CODE 1/0 WELD	2/0 CODE 2/0 WELD	3/0 CODE 3/0 WELD	4/0 CODE 3/0 WELD	250 CODE	
#8	.173	.200	.240	.406	.437	.562	.593	.672	.750	.825	.937	1.030	1.125
#10	.204	.218	.250	.406	.437	.562	.593	.672	.750	.825	.937	1.030	1.125
¼	.281	.250	.312	.469	.500	.562	.593	.672	.750	.825	.937	1.030	1.125
⅜	.344	.375	.406	.562	.562	.562	.675	.672	.750	.825	.937	1.030	1.125
⅝	.406	.375	.440	.578	.578	.594	.675	.672	.750	.825	.937	1.030	1.125
¾	.531	.500	.562	—	—	—	.750	.750	.750	.825	.937	1.030	1.125
⅞	.656	.625	.875	—	—	—	—	—	—	—	.937	1.030	1.125
1	.812	.750	.770	—	—	—	—	—	—	—	—	—	—
1*	.937	.875	.890	—	—	—	—	—	—	—	—	—	—
1*	1.062	.937	1.000	—	—	—	—	—	—	—	—	—	—

* These bolt holes available in one-hole lug only.

Chart B

CABLE SIZE	TONGUE THICKNESS	STRAIGHT LUG BARREL LENGTH PLUS TRANSITION		BARREL		DIM "X" STACKED LUGS			DIM "Y"		DIM "H"	
		SHORT	LONG	O.D.	I.D.	STRAIGHT	45°	90°	SHORT	LONG	SHORT	LONG
#8	.080	.635	.935	.260	.180	.158	.478	.394	.595	.808	.779	1.079
#6	.081	.675	.975	.296	.215	.134	.544	.432	.587	.799	.767	1.067
#4	.099	.685	.985	.365	.266	.175	.622	.502	.637	.849	.838	1.138
#2	.108	.815	1.115	.410	.302	.216	.649	.535	.711	.923	.958	1.258
#1	.106	.825	1.275	.467	.361	.212	.731	.592	.710	1.028	.956	1.406
1/0	.125	.975	1.325	.520	.396	.250	.789	.646	.794	1.042	1.075	1.425
2/0	.125	.965	1.315	.571	.446	.250	.859	.696	.829	1.077	1.125	1.475
3/0	.125	1.085	1.435	.632	.507	.250	.946	.757	.900	1.148	1.225	1.575
4/0	.137	1.255	1.705	.701	.564	.274	1.031	.826	1.015	1.333	1.387	1.837
250	.137	1.375	1.925	.766	.629	.274	1.123	.891	1.085	1.474	1.487	2.037
300	.153	1.900	2.675	.850	.660	.459	1.226	.975	1.180	1.726	1.924	2.679
350	.177	2.090	2.896	.926	.720	.531	1.333	1.103	1.267	1.830	2.096	2.896
400	.173	2.460	2.980	.960	.757	.519	1.370	1.085	1.551	1.913	2.484	2.984
500	.218	2.670	3.610	1.100	.852	.654	1.514	1.225	1.629	2.266	2.669	3.619
600	.244	2.900	3.490	1.200	.926	.732	1.630	1.325	1.762	2.147	2.897	3.497
700	.228	2.784	—	1.255	.997	.684	1.662	1.375	1.780	—	3.011	—
750	.270	3.050	3.925	1.330	1.030	.810	1.745	1.455	1.827	2.434	3.050	3.925
800	.266	3.213	—	1.375	1.079	.800	1.728	1.625	1.952	2.787	3.213	4.554
900	.313	3.450	4.550	1.500	1.145	.940	1.900	1.650	2.065	—	1.387	—
1,000	.297	3.356	4.500	1.550	1.203	.890	2.070	1.675	2.031	2.787	1.487	4.506

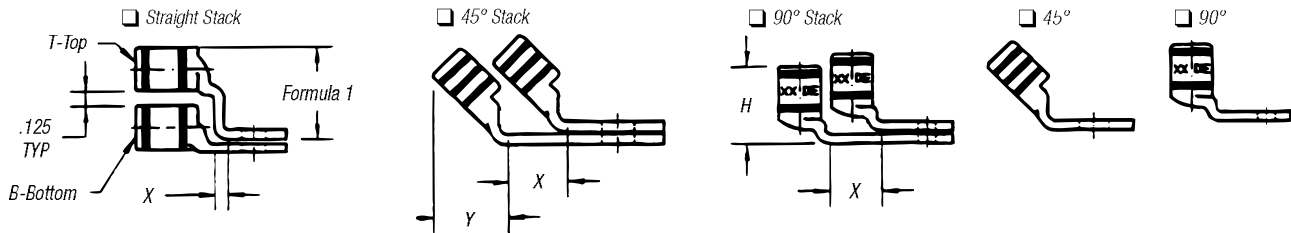
Note: Stacking lugs are available for one bolt only.

Consult Factory: Straight: 700 kcmil & up.

45°: 400 kcmil & up

90°: 500 kcmil & up

Overview



Formula 1 = (.125 + 2 (OD) + .037 – Tongue Thickness)

Chart C

BOLT HOLE SIZE	TONGUE WIDTH .030 CODE CABLE SIZE										
	300 KCMIL 4/0 WELD	350 KCMIL	400 KCMIL	500 KCMIL 400 WELD	600 KCMIL 500 WELD	1325/24	700 KCMIL	750 KCMIL	800 KCMIL	900 KCMIL	1000 KCMIL
#8	—	—	—	—	—	—	—	—	—	—	—
#10	—	—	—	—	—	—	—	—	—	—	—
¼	1.250	1.355	1.410	1.605	1.745	1.805	1.840	1.935	2.010	2.180	2.265
⅓	1.250	1.355	1.410	1.605	1.745	1.805	1.840	1.935	2.010	2.180	2.265
⅕	1.250	1.355	1.410	1.605	1.745	1.805	1.840	1.935	2.010	2.180	2.265
½	1.250	1.355	1.410	1.605	1.745	1.805	1.840	1.935	2.010	2.180	2.265
⅔	1.250	1.355	1.410	1.605	1.745	1.805	1.840	1.935	2.010	2.180	2.265
¾	1.250	1.355	1.410	1.605	1.745	1.805	1.840	1.935	2.010	2.180	2.265
⅞*	—	—	—	1.605	1.745	1.805	1.840	1.935	2.010	2.180	2.265
1*	—	—	—	—	1.745	1.805	1.840	1.935	2.010	2.180	2.265

* These bolt holes available in one-hole lug only.