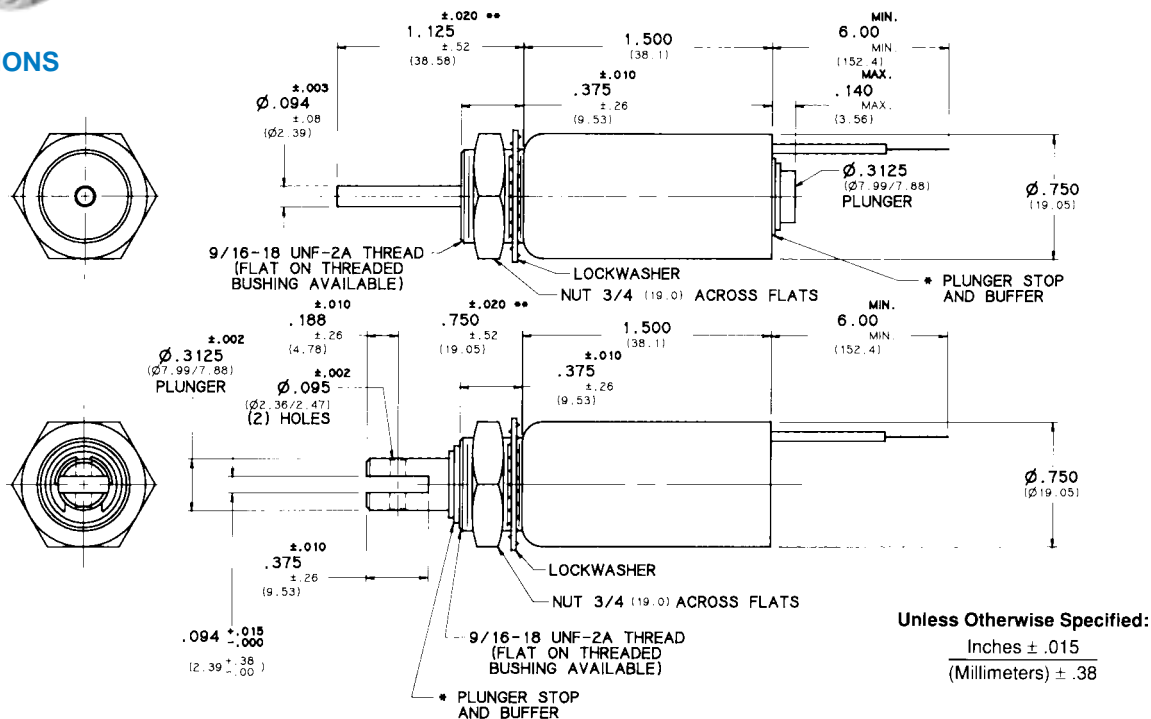


MED-12x1-1/2

TUBULAR SOLENOID

DIMENSIONS



INSULATION MATERIAL:

Class A Rating (standard)

MAXIMUM OPERATING TEMPERATURE:

Class A – 105°C (221°F)

DIELECTRIC STRENGTH:

50 Volts and Under: 500 VRMS

Over 50 Volts: 1,000 VRMS for one minute

STANDARD POWER RATINGS:

DUTY	NOMINAL DC POWER
Continuous	6 W
Intermittent	15 W
Pulse	58 W

UL INFORMATION:

UL File No. E57982 For Continuous Duty
 UL File No. E74443 For Insulation Systems
 S105

WEIGHT:

Plunger – .74 Oz.

Total – 2.56 Oz.

PLUNGER GUIDE MATERIAL:

Plastic (standard)

Stainless Steel (optional)

LIFE EXPECTANCY:

10⁷ Cycles Under Optimum Load Conditions

TERMINATION:

Vinyl Wire Leads 24 AWG (standard)

PLUNGER CONE ANGLE:

60 degrees (standard)

also available flat, 90 degrees, custom

PULL TYPE MAXIMUM DIMENSIONS:

Length 2.483 In.

Diameter ø.765 In.

Plunger Diameter ø.315 In.

MAXIMUM STROKE:

.600 In.

MED-12x1-1/2 STANDARD COIL RATING

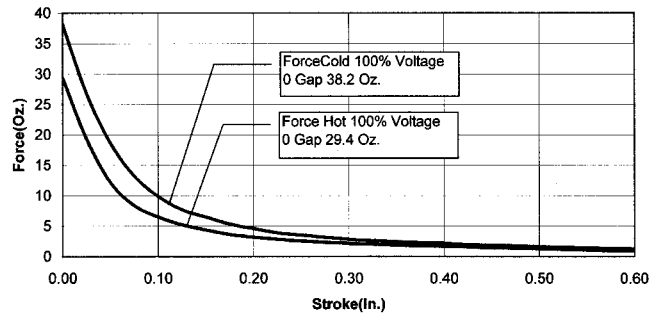
VOLTAGE	CONTINUOUS DUTY	RESISTANCE ±5%	INTERMITTENT DUTY	RESISTANCE ±5%	PULSE DUTY	RESISTANCE ±5%
PULL TYPE UNITS						
	P/N		P/N		P/N	
6 VDC	53751-80	6.2 OHMS	53751-86	2.5 OHMS	53751-92	.62 OHMS
12 VDC	53751-81*	25 OHMS	53751-87*	10 OHMS	53751-93	2.5 OHMS
24 VDC	53751-82*	100 OHMS	53751-88*	40 OHMS	53751-94	10 OHMS
115 VDC	53751-84	2500 OHMS	53751-90	1000 OHMS	53751-96	250 OHMS
PUSH TYPE UNITS						
6 VDC	53761-80	6.2 OHMS	53761-86	2.5 OHMS	53761-92	.62 OHMS
12 VDC	53761-81*	25 OHMS	53761-87*	10 OHMS	53761-93	2.5 OHMS
24 VDC	53761-82*	100 OHMS	53761-88*	40 OHMS	53761-94	10 OHMS
115 VDC	53761-84	2500 OHMS	53761-90	1000 OHMS	53761-96	250 OHMS

*Black Items Are Normally Stocked.

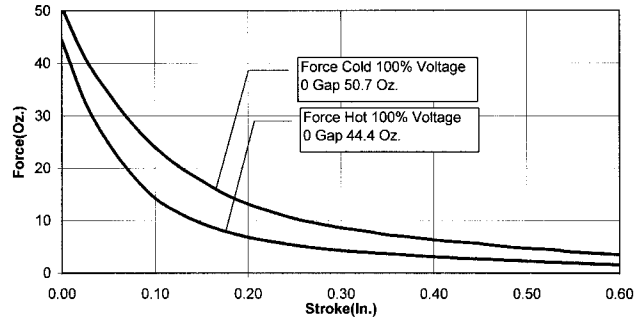
Blue Items Are Non Stock – Minimum Quantity May Be Required.

MED 12x1-1/2 TYPICAL FORCE CURVES (CLASS A)

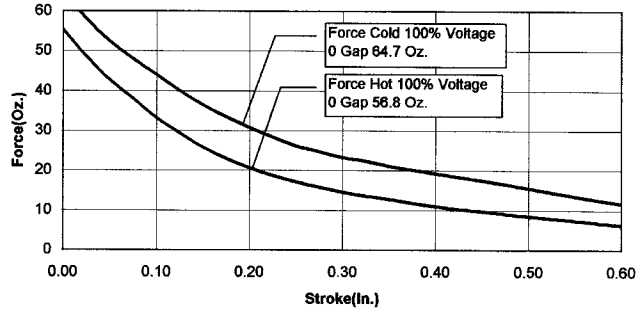
DC CONTINUOUS DUTY 6 WATTS



DC INTERMITTENT DUTY 15 WATTS



DC PULSE DUTY 58 WATTS



Standard intermittent duty cycle at nominal voltage is one (1) minute "ON" and three (3) minutes "OFF". Standard pulse duty cycle is 100 milliseconds "ON" and 900 milliseconds "OFF"

NOTE: Cold Force @ 25°C (77°F) Coil Temperature.
Hot Force @ 130°C (266°F) Coil Temperature.

NOTE: Approx. 16 sq. in. Heat Sink Required.