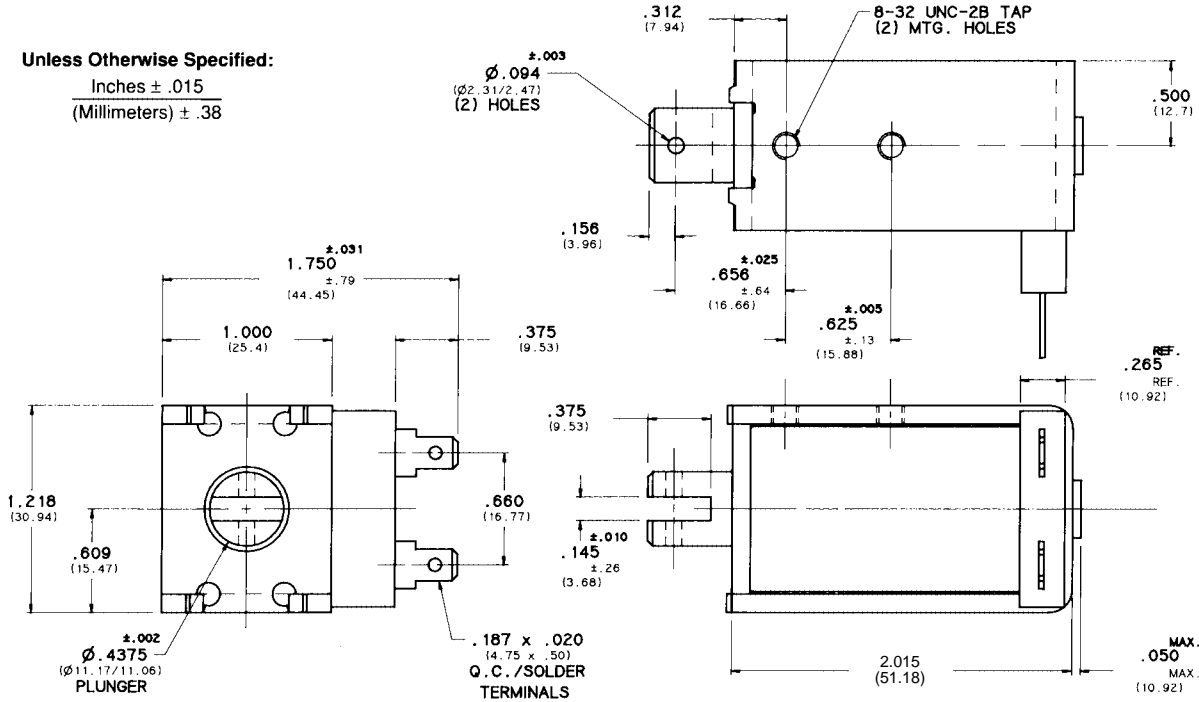


D-30 "D" FRAME SOLENOID

DIMENSIONS

Unless Otherwise Specified:
 Inches ± .015
 (Millimeters) ± .38



COIL TREATMENT:

Plastic Encapsulation.
 Class A Rating (standard)
 Class F Rating (optional)

MAXIMUM OPERATING TEMPERATURE:

Class A – 105°C (221°F)
 Class F – 155°C (311°F)

DIELECTRIC STRENGTH:

30 Volts and Under: 500 VRMS
 Over 30 Volts: 1,000 VRMS plus 2x rated voltage for one minute

STANDARD POWER RATINGS:

DUTY	NOMINAL AC POWER (SEATED)	NOMINAL DC POWER
Continuous	13 VA	8.5 W
Intermittent	37 VA	21 W
Pulse	120 VA	85 W

UL INFORMATION:

UL File No. E57982 For Continuous Duty
 UL File No. E74443 For Insulation Systems
 S105, S130, S130D, S130D1 & S155D

WEIGHT:

Plunger – 1.06 Oz.
 Total – 7 Oz.

PLUNGER GUIDE MATERIAL:

Plastic

LIFE EXPECTANCY:

10⁷ Cycles Under Optimum Load Conditions

TERMINATION:

.187 In. Quick-Connect/Solder Lug (standard)
 Wire Leads (optional with tape-wrapped coils)

PLUNGER CONE ANGLE (DC):

38 Degrees Stepped Cone (standard)
 also available
 flat, 60 degrees, 90 degrees, custom

MAXIMUM DIMENSIONS:

Length 2.030 In.
 Width 1.781 In.
 Height 1.234 In.
 Plunger Diameter ø.4395 In.

MAXIMUM STROKE:

1.00 In.

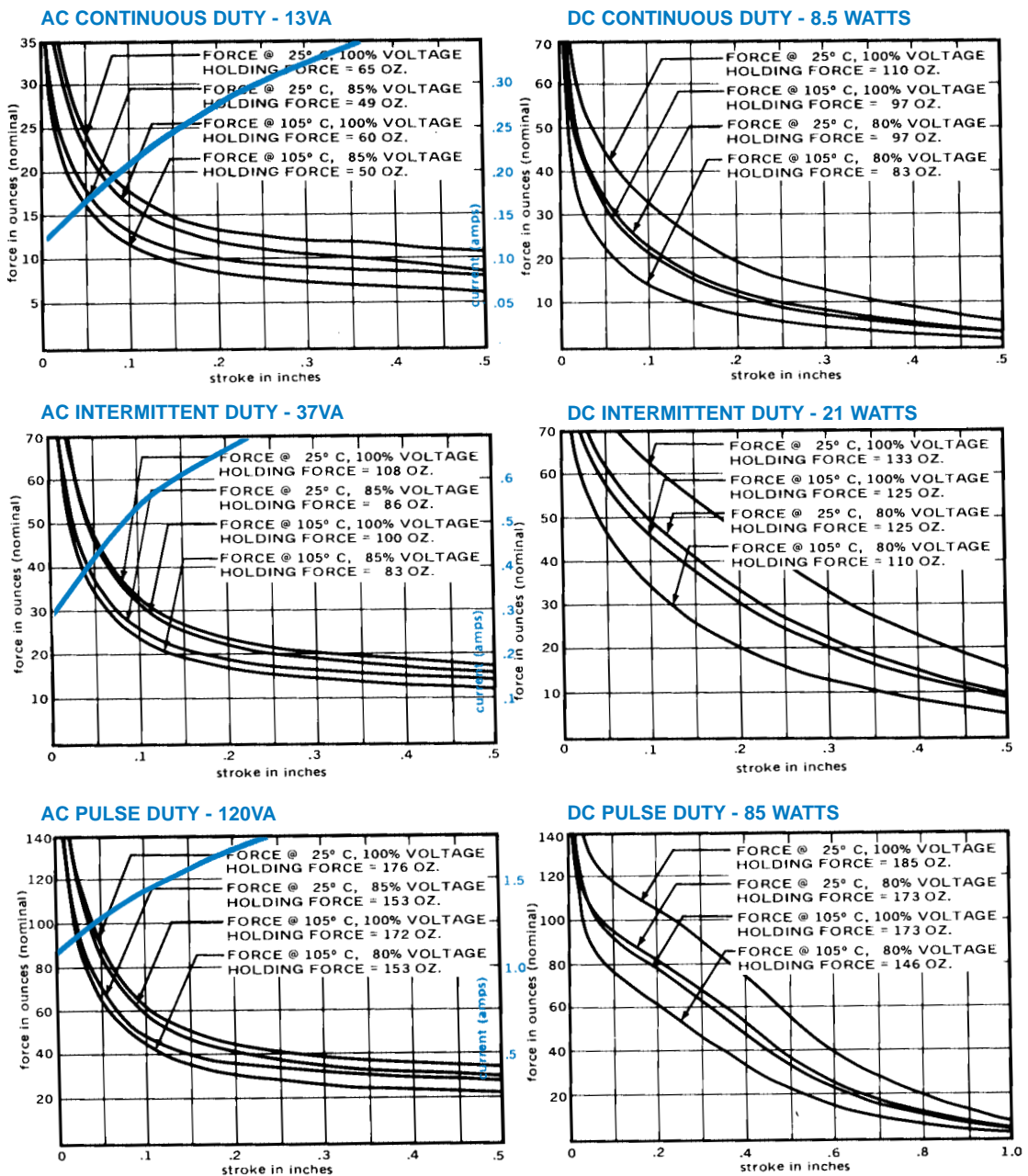
D-30 STANDARD COIL RATING

VOLTAGE	CONTINUOUS DUTY	RESISTANCE AC ±10% DC ±5%	INTERMITTENT DUTY	RESISTANCE AC ±10% DC ±5%	PULSE DUTY	RESISTANCE AC ±10% DC ±5%
AC COILS (60 Hz)	P/N		P/N		P/N	
6 VAC	53748-80	.41 OHMS	53748-86	—	53748-92	—
12 VAC	53748-81	1.65 OHMS	53748-87	.841 OHMS	53748-93	.43 OHMS
24 VAC	53748-82	6.71 OHMS	53748-88	3.78 OHMS	53748-94	1.73 OHMS
120 VAC	53748-84	172 OHMS	53748-90	86.2 OHMS	53748-96	45.5 OHMS
240 VAC	53748-85	700 OHMS	53748-91	353 OHMS	53748-97	182 OHMS
DC COILS						
6 VDC	53749-80	4.27 OHMS	53749-86	1.65 OHMS	53749-92	.41 OHMS
12 VDC	53749-81*	17.7 OHMS	53749-87*	6.71 OHMS	53749-93	1.65 OHMS
24 VDC	53749-82*	69.8 OHMS	53749-88*	26.8 OHMS	53749-94	6.71 OHMS
110 VDC	53749-84	1470 OHMS	53749-90	538 OHMS	53749-96	148 OHMS

*Black Items Are Normally Stocked.

Blue Items Are Non Stock – Minimum Quantity May Be Required.

D-30 FORCE CURVES (CLASS A)



Standard intermittent duty cycle at nominal voltage is (three) 3 minutes "ON" and (nine) 9 minutes "OFF". Standard Pulse duty cycle is 100 milliseconds "ON" and 900 milliseconds "OFF".

NOTE: Approx. 36 sq. in. Heat Sink Required.